

·	3
	4
	4
	4
·	6
	7
	8
	9
	11
·	12
	13
가	13
	14
	18
	20
	26
	33
	41
	46
	51
	51
	52
가	52
	54

..... 55

..... 101

..... 103

..... 107

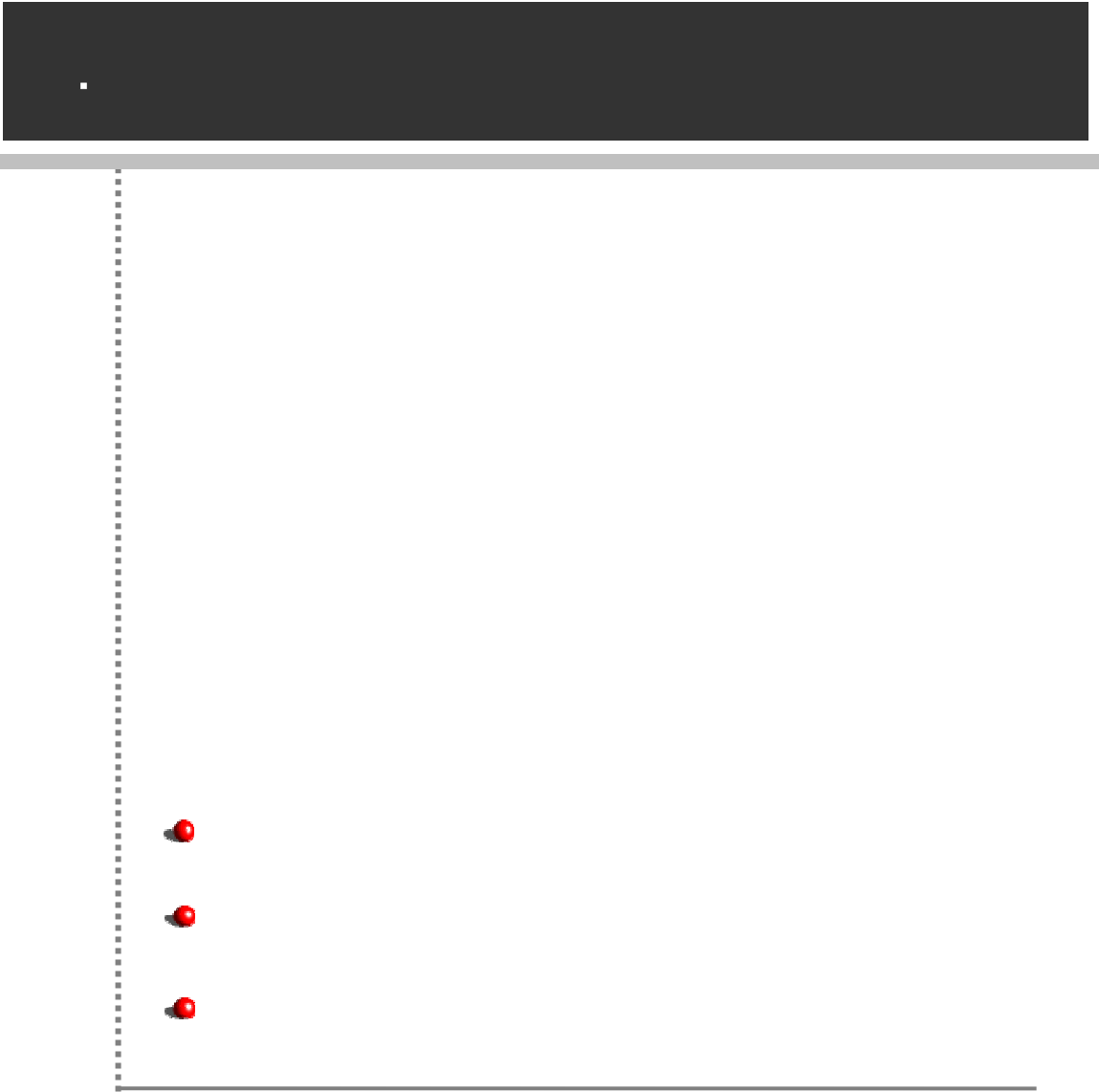
..... 112

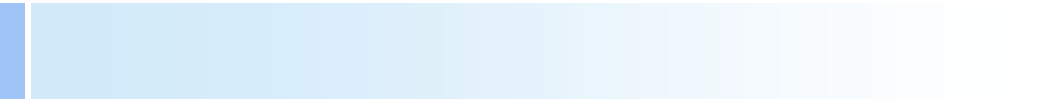
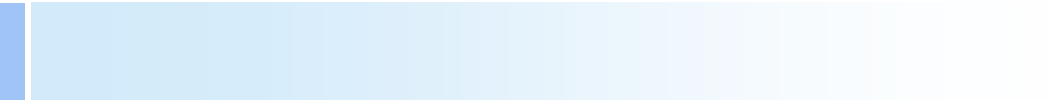
가 112

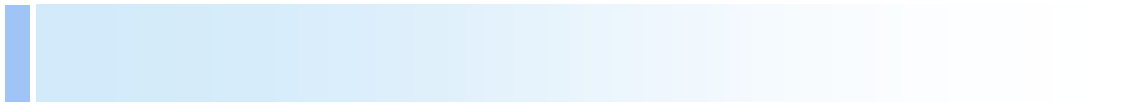
..... 113

..... 116

..... 118

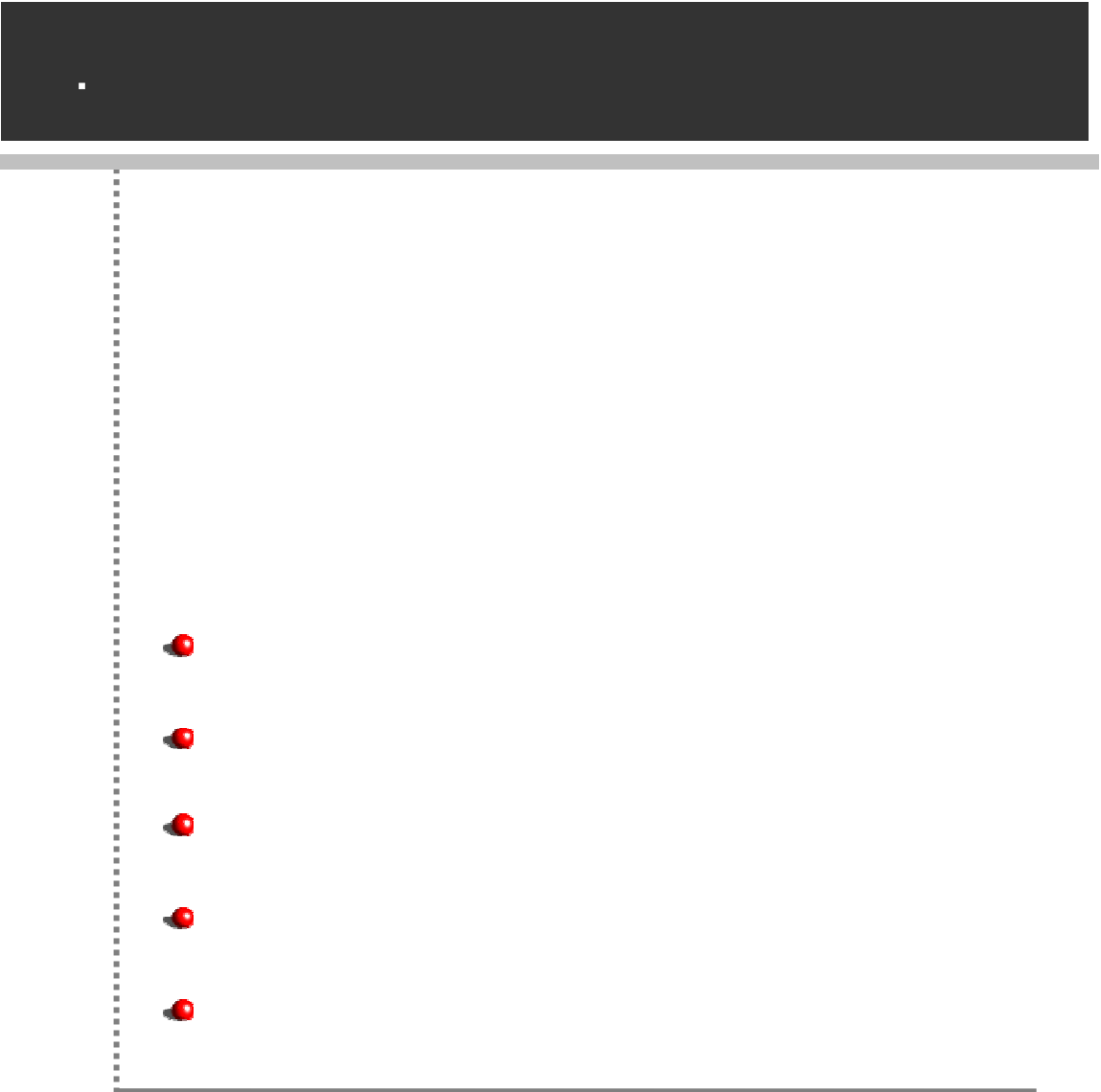






가

Manual	Description
Getting Started	
가	
Getting Started	
가	
가	
가	가



OS

MS Windows NT 4.0, 2000 Server, 2003 Server

: Windows 95/98/ME Unicode

CPU

Pentium II 300MHz, Pentium III 500MHz

Main Memory

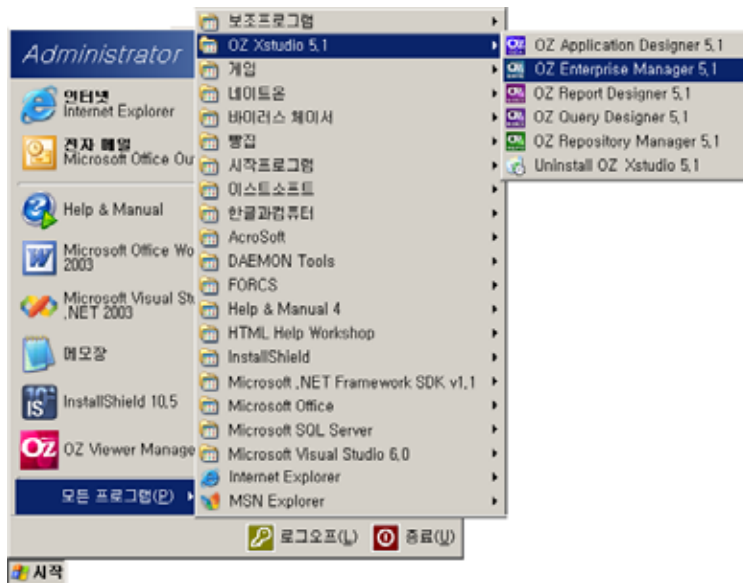
128MB, 256MB

HDD

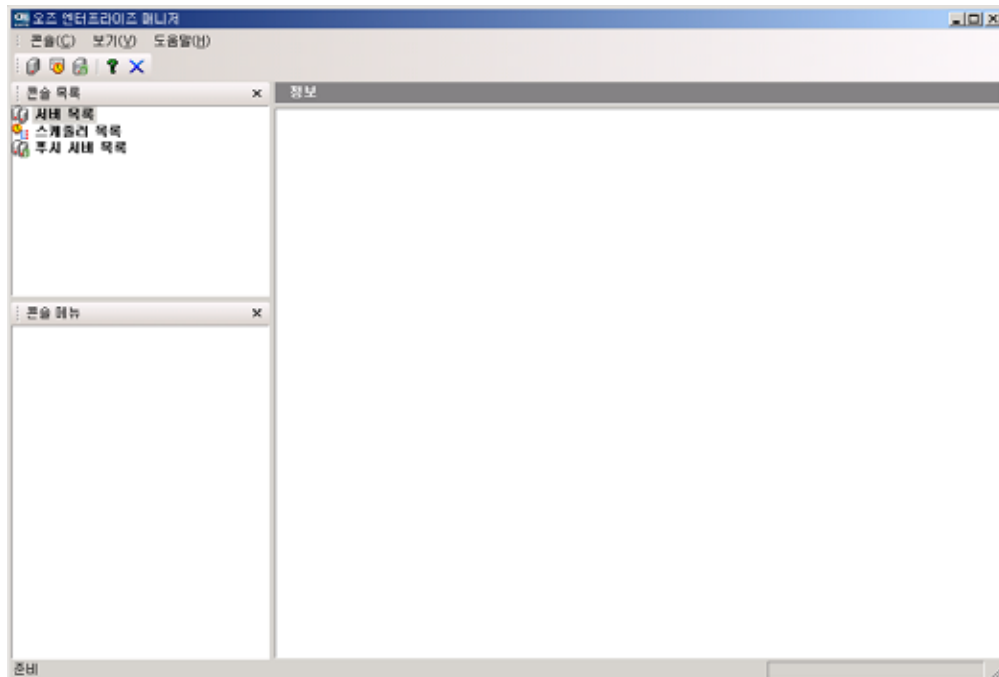
10MB

- em_ _ 가 .dll , 가
ISO 가 639 .
- , em_ _ 가 .dll, em_ .dll, em.dll
, *.dll .

[] - [OZ XStudio 5.1] - [OZ Enterprise Manager 5.1]



가

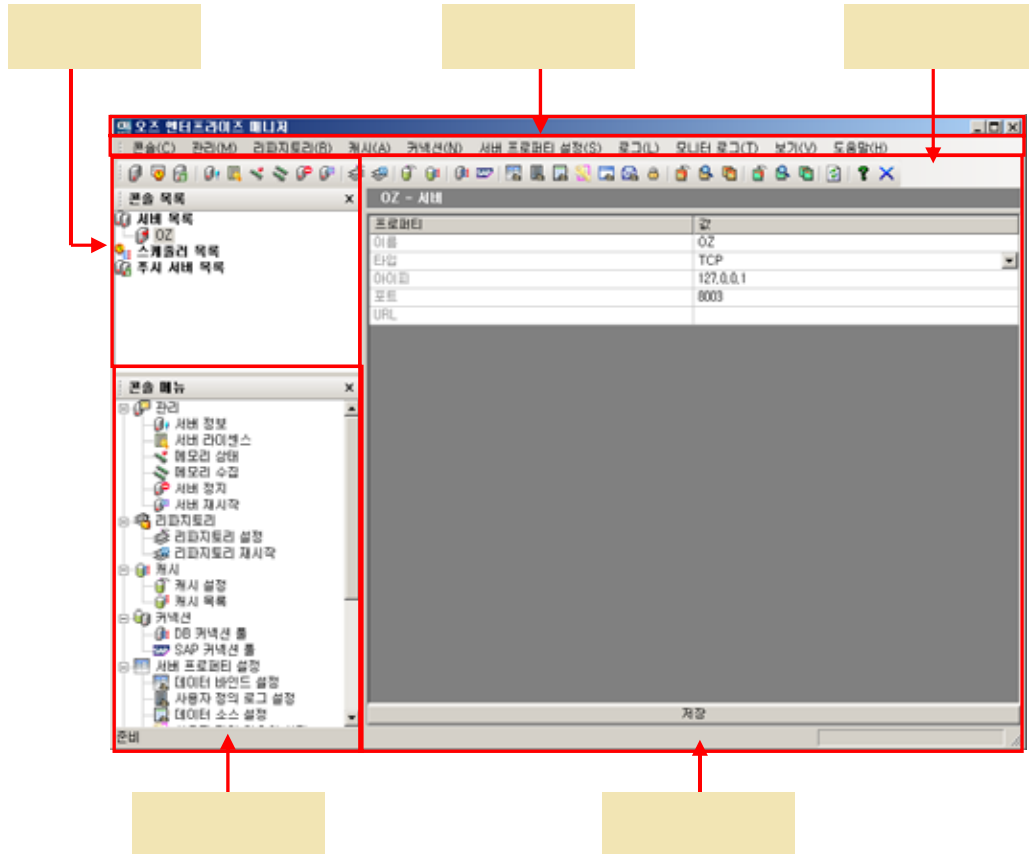


•

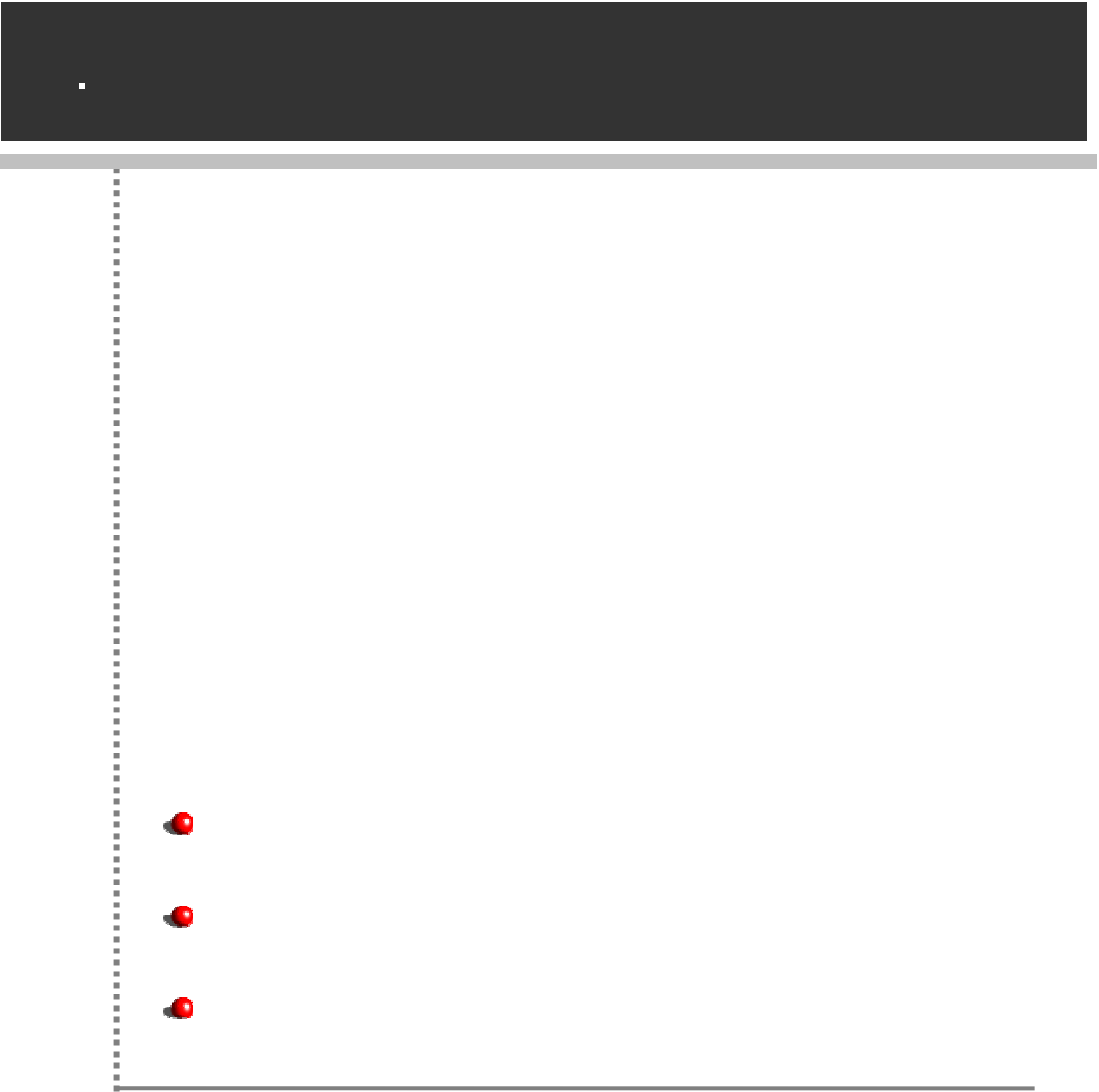
[] []

가 . []

가 가 .



	(pull down)
	가, 가,



가

■ 가

가 [] - [가]

[

가]

가

()

가

가

새 서버

이름

타입

TCP

IP

127.0.0.1

포트

8003

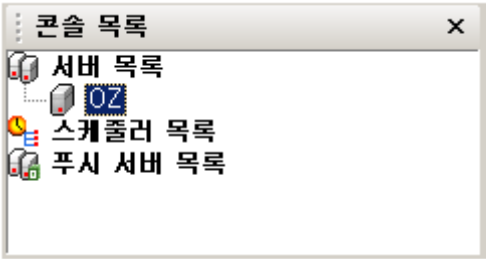
URL

추가

취소

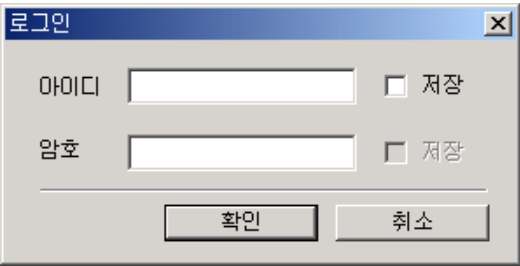
	<p> : "admin" 가 </p>
	<p> TCP , URL HTTP </p>
IP	<p> TCP 가 IP </p>
	<p> TCP 가 TCP </p>
URL	<p> HTTP 가 URL URL) http://www.oz.com/ozservlet </p>

" " [가] []
[] 가 가 .



■

[] " "가 .
" " " " [] .

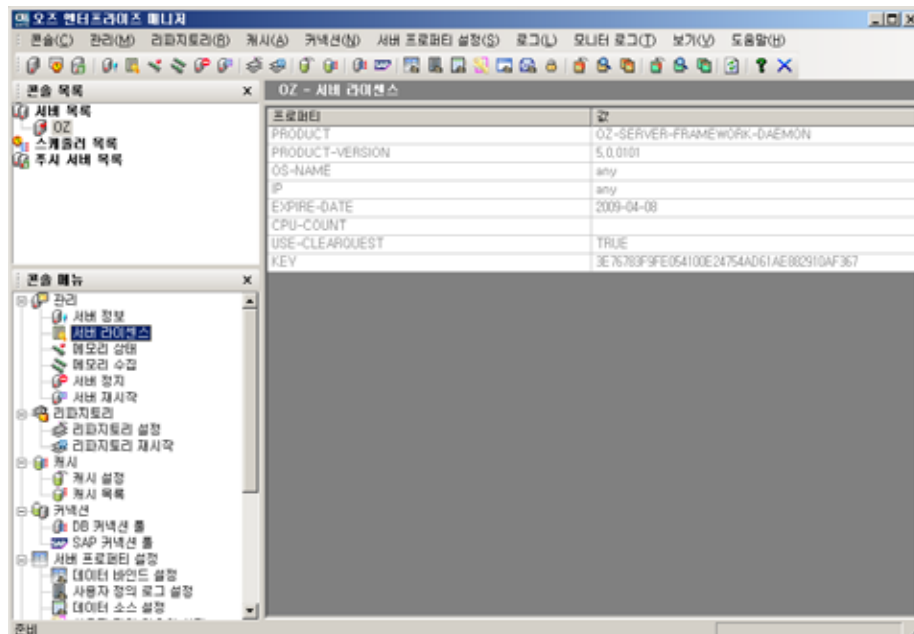
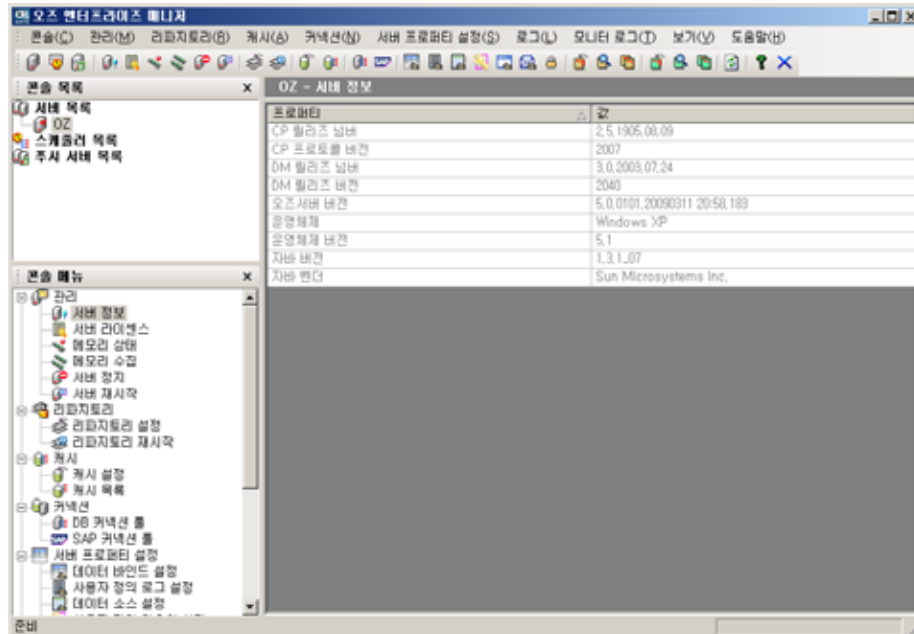


" " 가 "

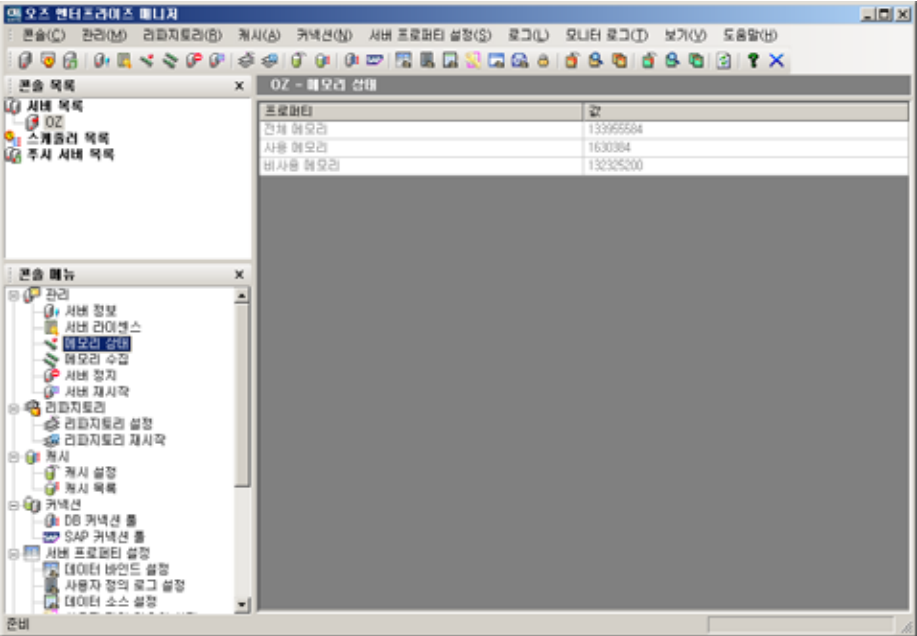
"가 .

: " " "admin", " " "admin"
, Repository Manager 가/ /

가 .



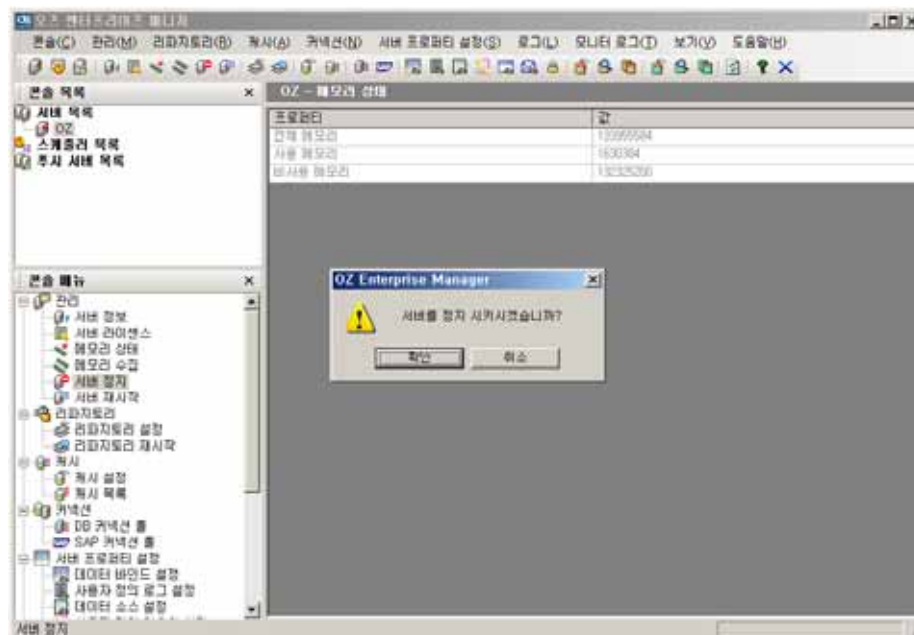
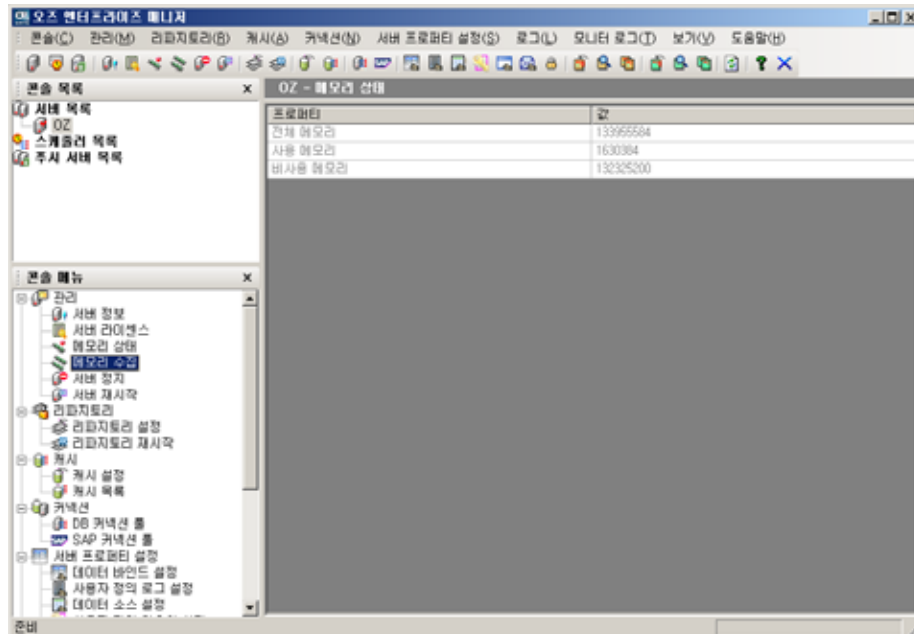
■



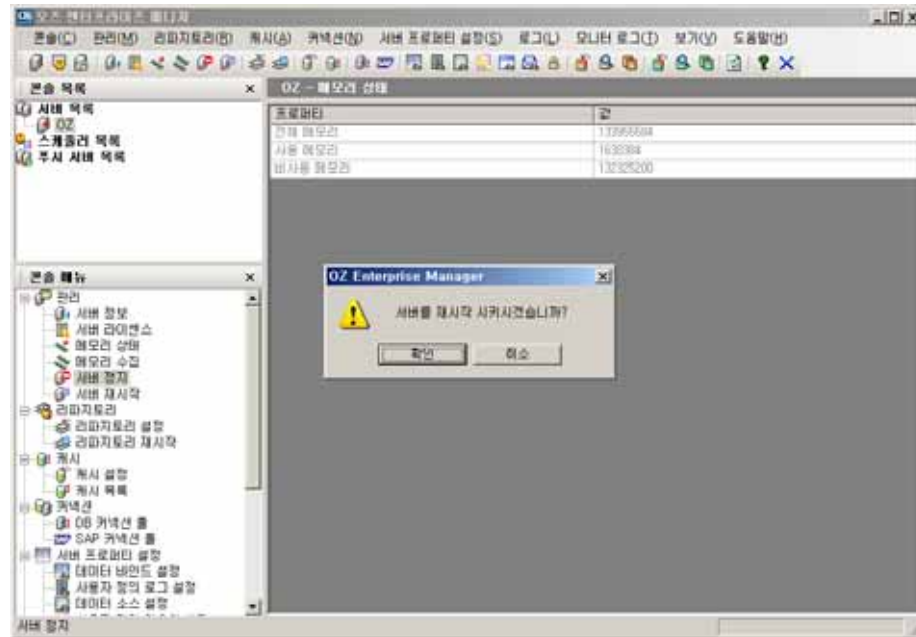
: 가

■

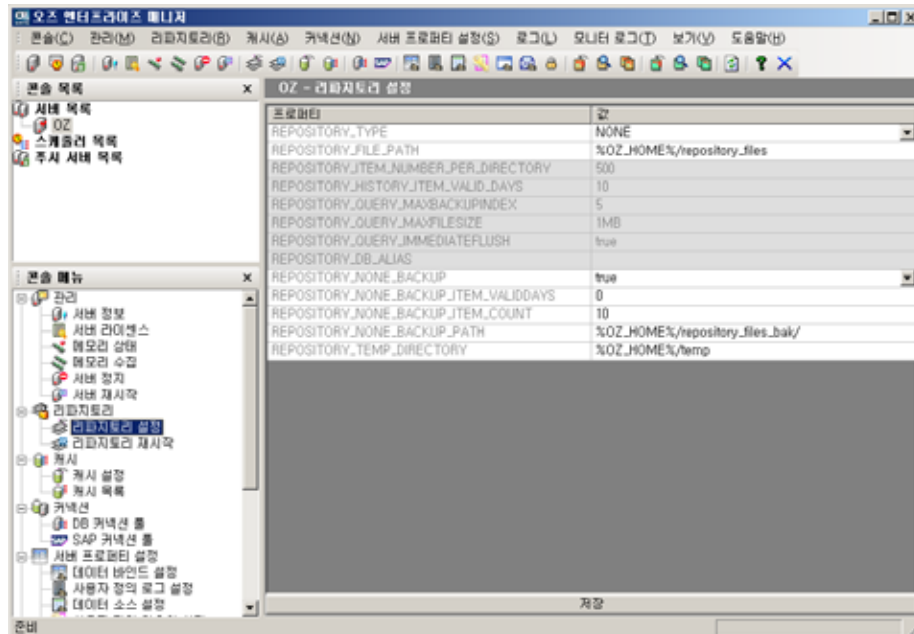
가 . JVM
가



가



WAS



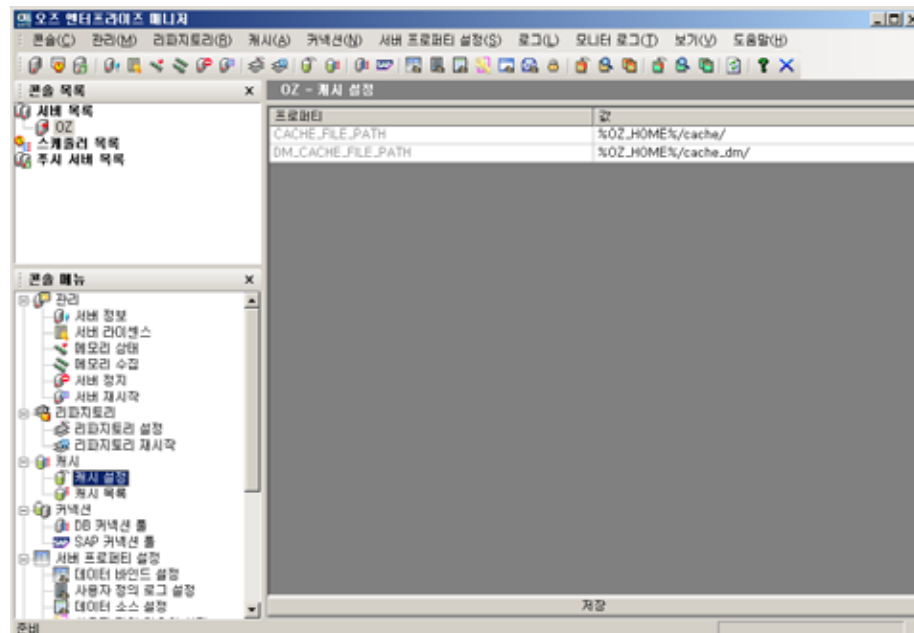
REPOSITORY_TYPE	.(Builtin, RDB, NONE)		
REPOSITORY_DB_ALIAS	db.properties Repository	Alias가 .	DB
REPOSITORY_FILE_PATH	.		
REPOSITORY_ITEM_NUMBER_PER_PATH	.		
REPOSITORY_HISTORY_ITEM_VALID_DAYS	가		
REPOSITORY_ADD_COMPRESSED_ITEM	. "true"		
REPOSITORY_QUERY_MAXBACKUPINDEX	Builtin DB	.	
REPOSITORY_QUERY_MAXFILESIZE	Builtin DB	.	
REPOSITORY_QUERY_IMMEDIATEFLUSH	Builtin DB	. "true"	
REPOSITORY_NONE_BACKUP	None	Backup	
REPOSITORY_NONE_BACKUP_PATH	None	Backup	

REPOSITORY_NONE_BACK UP_ITEM_COUNT	None	Backup
REPOSITORY_NONE_BACK UP_ITEM_VALIDDAYS	None	Backup

■

■

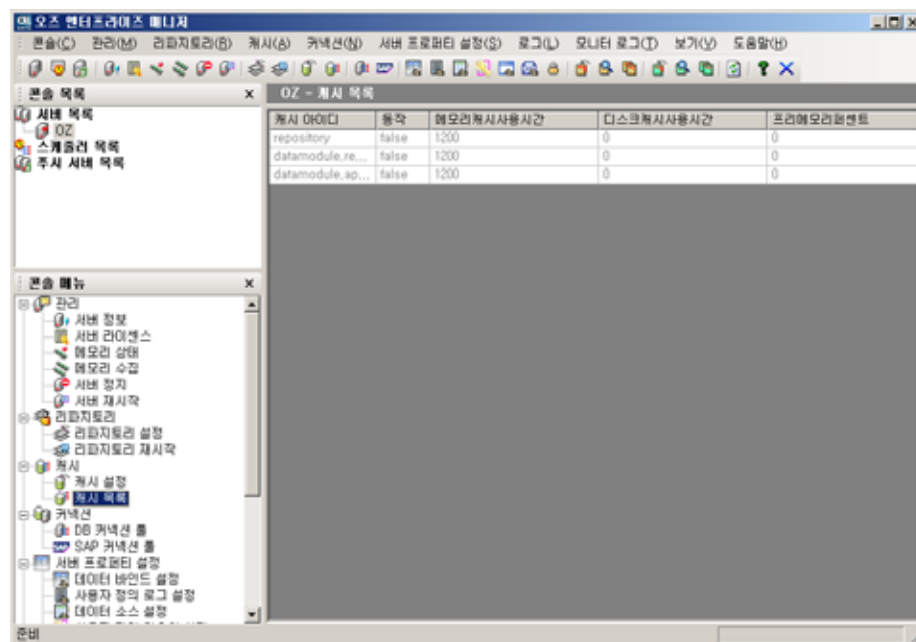
[]



CACHE_FILE_PATH	
DM_CACHE_FILE_PATH	

■

[가] []

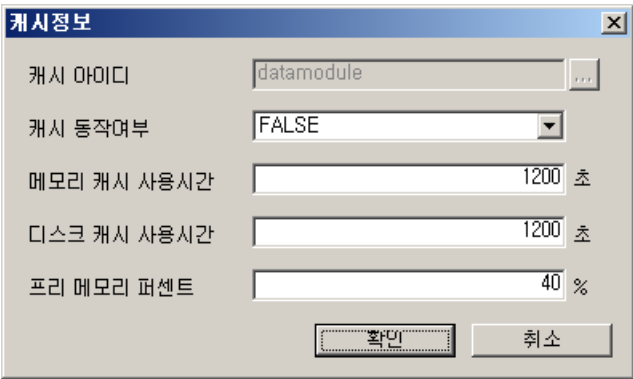



- 가

가

[가]

"가

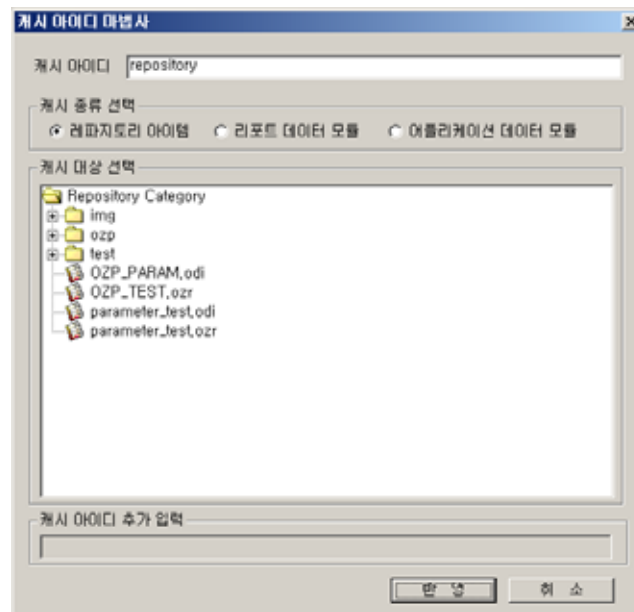


	
	"true/false" 가
	(:)

cachemngr.properties

가





가	가	
	•	가
	•	가
		가

가

```
datamodule.report.[CategoryName].[ItemName].[FetchMode].  
[ParameterName_1 = ParameterValue_1]. ...  
[ParameterName_n = ParameterValue_n].  
[DataSetName_1 = MaxRow_1]. ... [DataSetName_n = MaxRow_n].  
[InvalidSetName_1]. ... [InvalidSetName_n]
```

.	.
datamodule.report	가
[CategoryName]	.
[ItemName]	.
[FetchMode]	"DM_CONCURRENT_FETCH" "DM_BATCH_FETCH"
[ParameterName_1 = ParameterValue_1] ... [ParameterName_n = ParameterValue_n]	가 [=]
[DataSetName_1 = MaxRow_1] ... [DataSetName_n = MaxRow_n]	[=]
[InvalidSetName_1]	" " ' " "

```
test1.odi test1.odi (/)  
" DM_BATCH_FETCH" , 가 " , " "  
" , " " " "  
가  
datamodule.report.[/].[test1.odi].[DM_BATCH_FETCH].[ = " "].[  
=2004].[ =100].[ =100][ ]
```

```
가  
datamodule.application.[CategoryName].[ItemName].
```



```
[DataSetName]. [DataSetNumber]. [FetchMode].
[ParameterName_1 = ParameterValue_1]. ...
[ParameterName_n = ParameterValue_n].
[DataSetName_1 = MaxRow_1]. ... [DataSetName_n = MaxRow_n].
[MasterDataSetParameterName_1 = MasterDataSetParameterValue_1]. ...
[MasterDataSetParameterName_n = MasterDataSetParameterValue_n].
```

.	.
datamodule.report	가
[CategoryName]	.
[ItemName]	.
[FetchMode]	"DM_CONCURRENT_FETCH" "DM_BATCH_FETCH"
[ParameterName_1 = ParameterValue_1] ... [ParameterName_n = ParameterValue_n]	가 [=]
[DataSetName_1 = MaxRow_1] ... [DataSetName_n = MaxRow_n]	[=]
[MasterDataSetParameterName_1 = MasterDataSetParameterValue_1] ... [MasterDataSetParameterName_n = MasterDataSetParameterValue_n]	가 [=]

```
"test1.odi" , "test1.odi"
"MasterDetail" , "DM_CONCURRENT_FETCH" ,
" " , " " 0 , " "
"가 " , " "
```

가 "

```
datamodule.application. [/MasterDetail]. [test1.odi]. [
]. [0]. [DM_CONCURRENT_FETCH]. [가 =2004]. [ =100]. [
="Silver"]
```

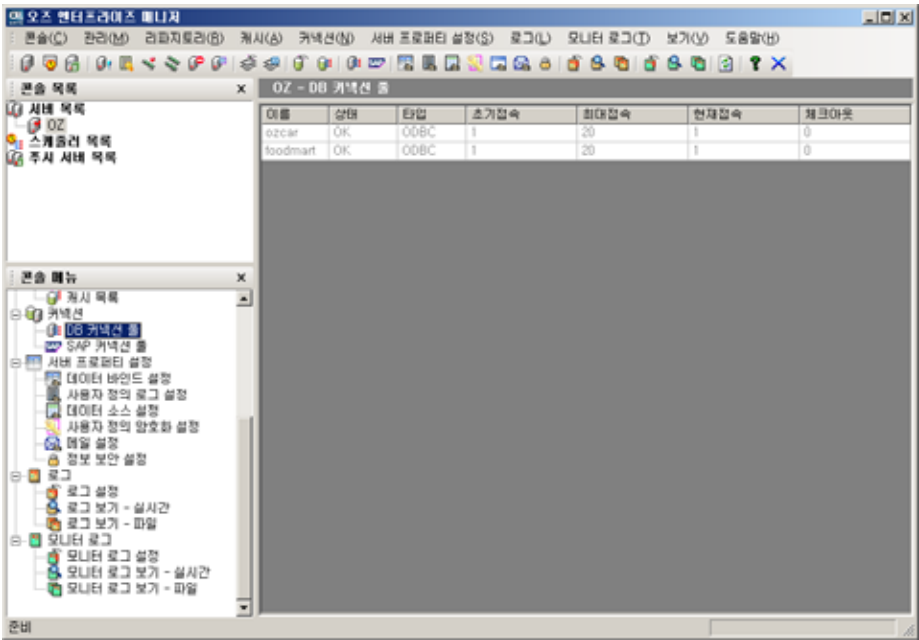
SAP

■ DB

DB

[]

DB 가,



[

]

상세 보기	
이름	ODBC
상태	OK
타입	ODBC
아이피	
포트	0
SID	
데이터베이스명	
데이터베이스 드라이...	OZCAR
사용자 이름	
패스워드	
초기접속	1
최대접속	20
타임아웃	5

" 가"

가

"DB" []

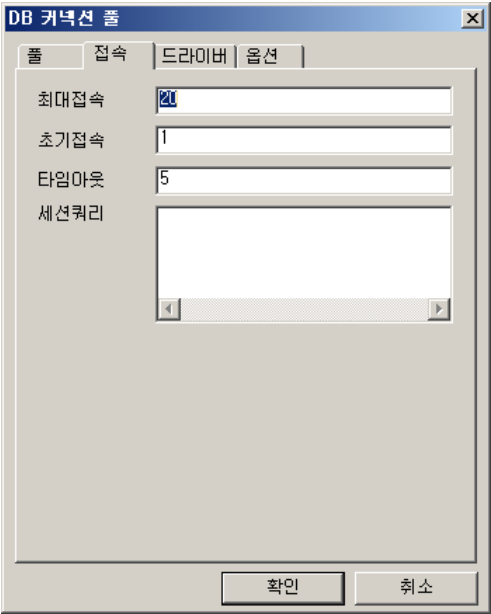
가 가 . DB 가

DB 커넥션 풀	
풀	접속 드라이버 옵션
이름:	<input type="text"/>
DB 벤더:	oracle
<div>ORACLE</div> <div> <div>데이터베이스 서버 IP 주:</div> <div>데이터베이스 서버 포트:</div> <div>데이터베이스 서버 이름:</div> </div> <div> <div>ORCL</div> <div>1521</div> <div>ORCL</div> </div>	
사용자 이름	<input type="text"/>
패스워드	<input type="text"/>
확인	<input type="text"/>
인코딩셋	<input type="text"/>
디코딩셋	<input type="text"/>
<div>확인</div> <div>취소</div>	

	alias
DB	

IP	IP
	DBMS SID)
	가

■



	가 가 DB Connection
	DB Connection
	Maxconns Connection (:)
	db.properties

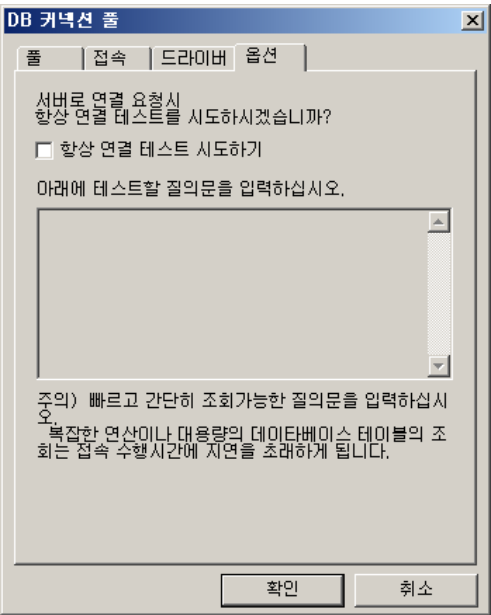
■

URL,
가 가

	JDBC
URL	JDBC URL
	JDBC connection property string

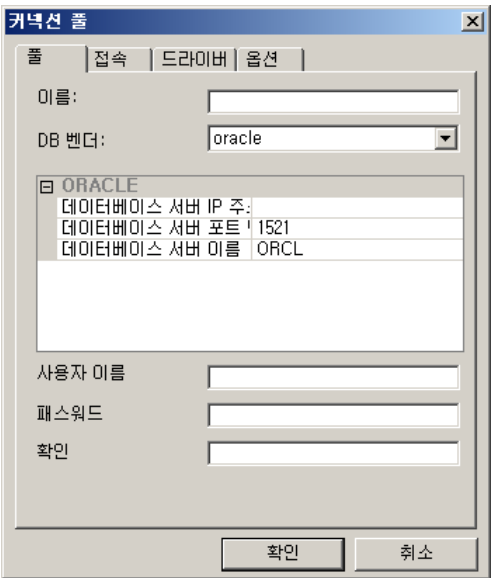
가

가



	가
	가
	.

[]



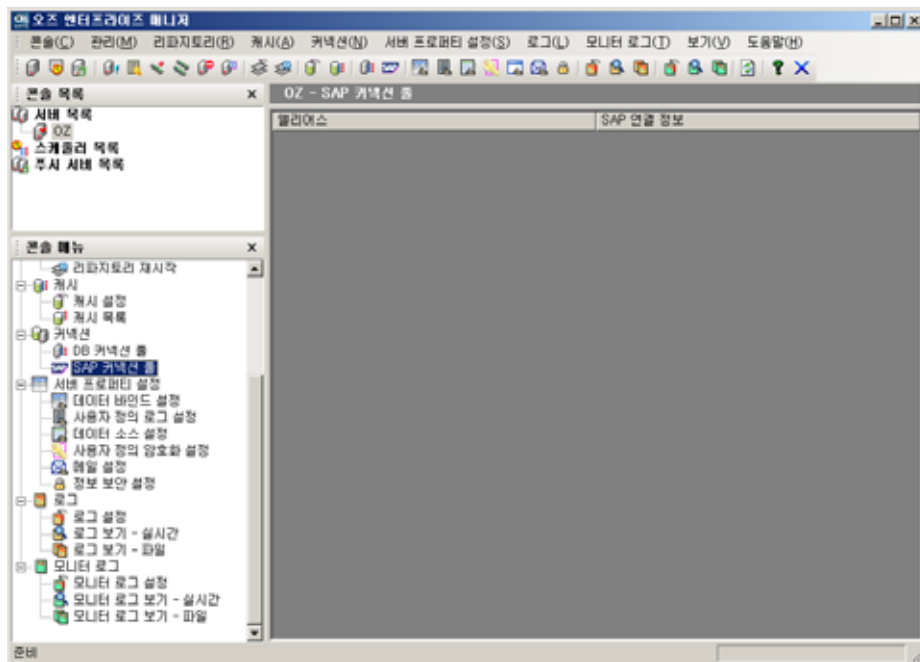
[]

■ SAP

SAP

[]

SAP 가,



가

"SAP"

[]

가 가 . SAP

가

SAP 커넥션 풀

앨리어스:

타입:

TYPE1

TYPE1

client	
user	
password	
language	
host	
sysno	
maxcnt	1
timeout	600000
timeoutcheckperiod	1000
istrace	false
doConnectionCheck	false

확인

취소

"sap.properties"

[]

SAP 커넥션 풀

앨리어스:

Con1

타입:

TYPE1

TYPE1

client	
user	
password	
language	
host	
sysno	
maxcnt	1
timeout	600000
timeoutcheckperiod	1000
istrace	false
doConnectionCheck	false

확인

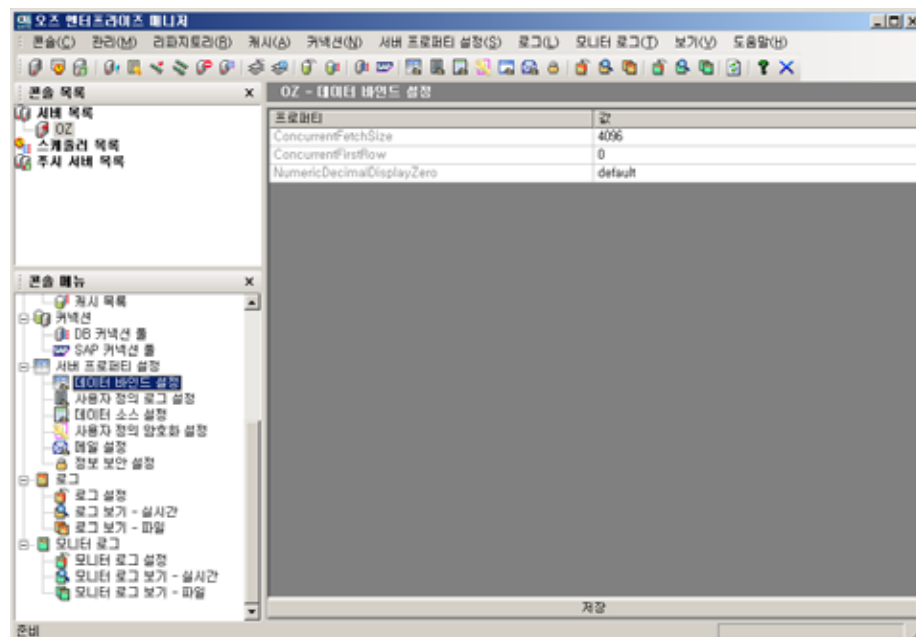
취소

[]

(ozudl.properties), (datasource.properties),
(uslmngr.properties), (mail.properties)

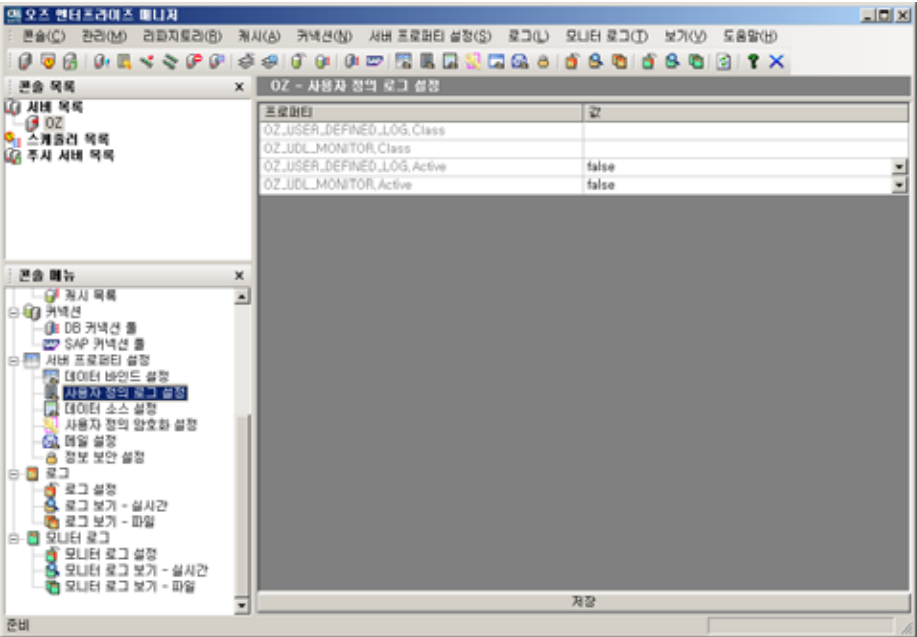
■

Concurrent , Concurrent Row, 0



"databind.properties"

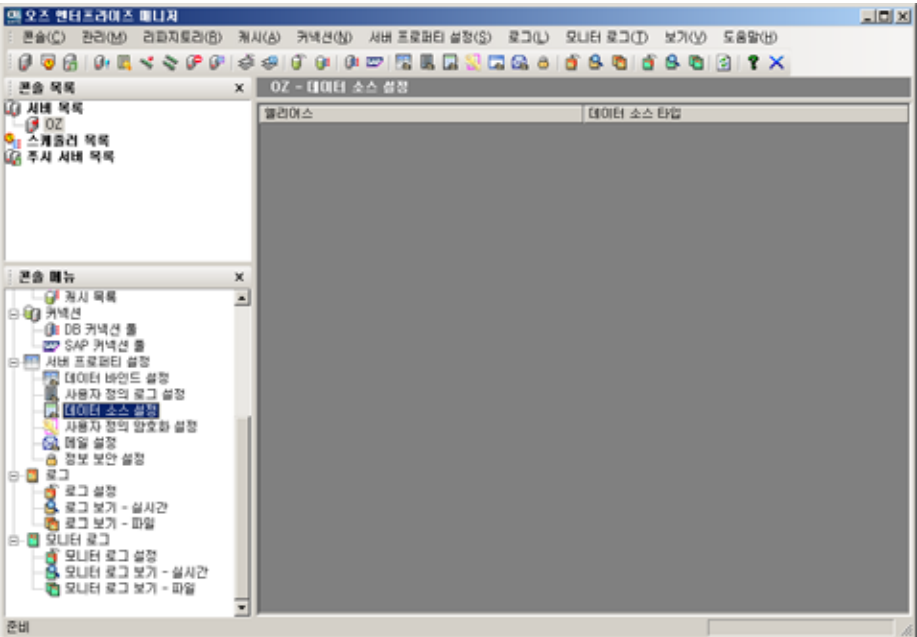
■



"ozudl.properties"

■

가 , HTTP , SOAP , XML



- 가
[가] " 가
"가 . " 가 " []
가 가 .
가 .

데이터 소스 추가

앨리어스

데이터베이스 벤더 이름

XML

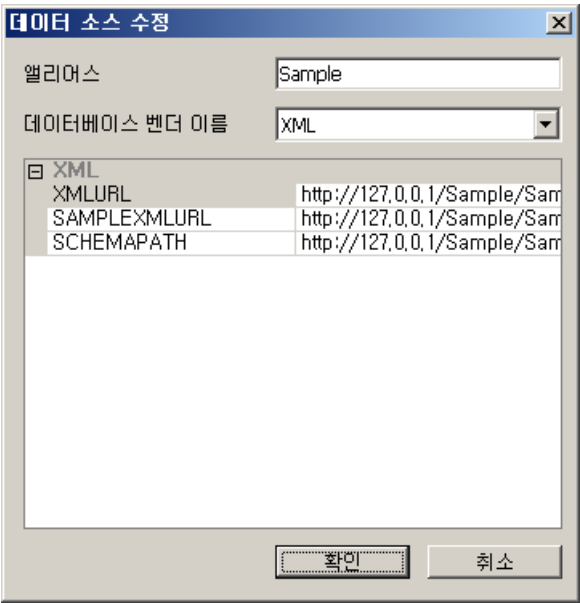
XML

XMLURL	
SAMPLEXMLURL	
SCHEMAPATH	

확인

취소

- []
" 가 . "
" [] 가



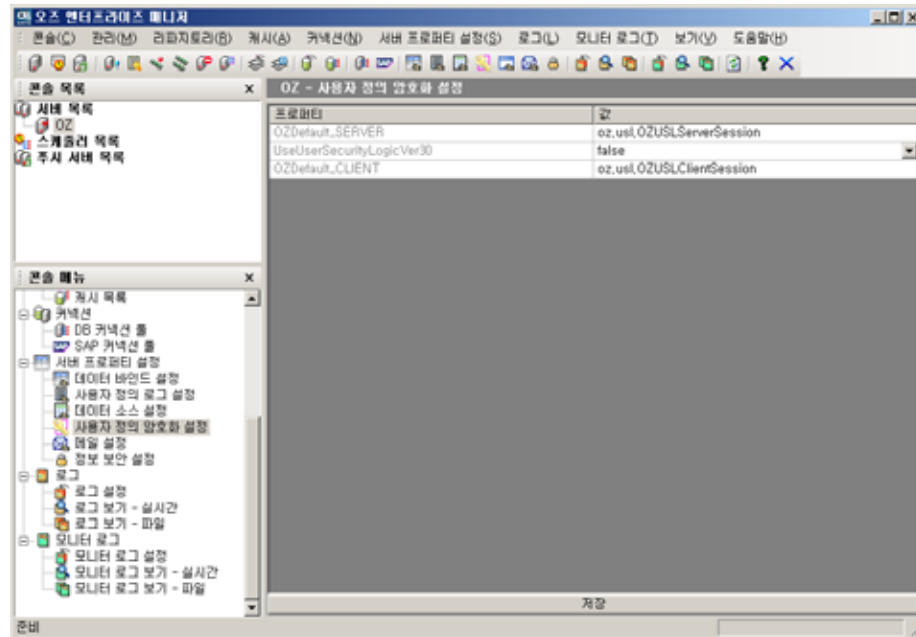
[]

가

"datasource.properties"

■

(User Security Logic)

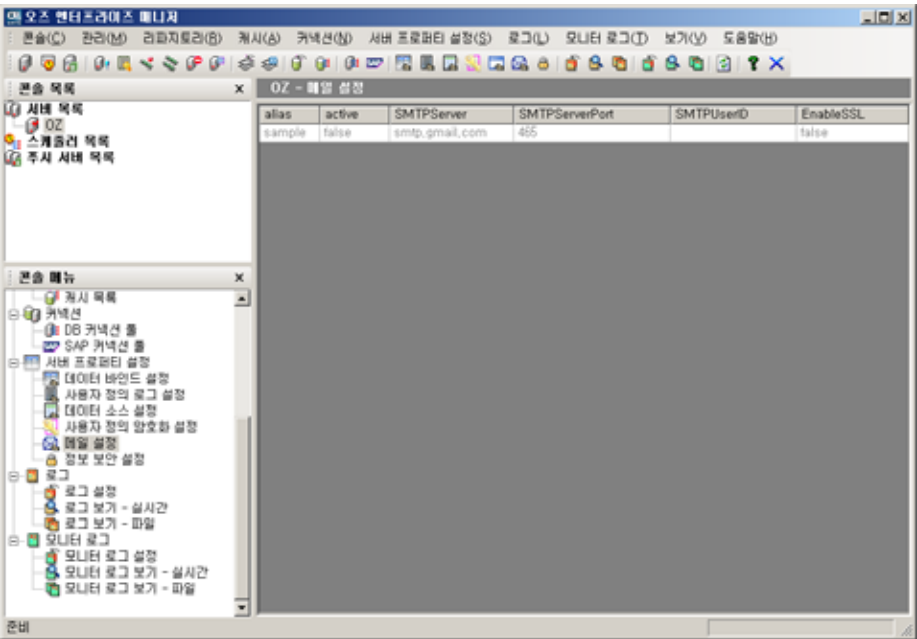


"uslmngr.properties"

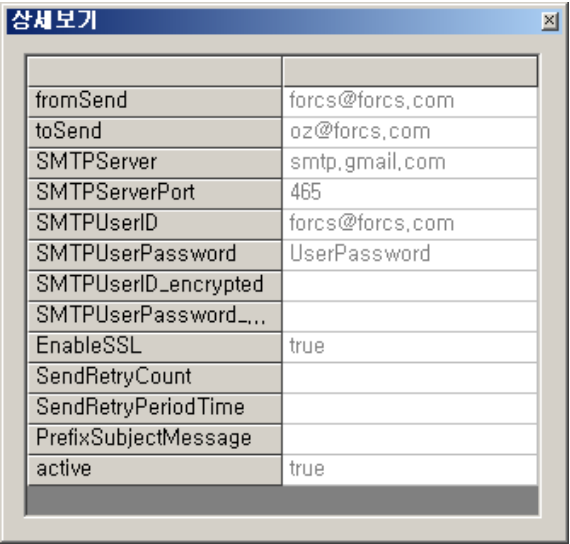
■

[]

가,



[
]



"mail.properties"

- 가
[가] " 가 "
가 . " 가 " []
가 가 .

Property	
fromSend	
toSend	
SMTPServer	
SMTPServerPort	
SMTPUserID	
SMTPUserPassword	
SMTPUserID_encrypted	
SMTPUserPassword_encr	
EnableSSL	
SendRetryCount	
SendRetryPeriodTime	
PrefixSubjectMessage	

확인 취소

: SendRetryCount SendRetryPeriodTime
가 ,

-
[]
" "가 . " "
[] 가 .

메일 설정 수정

앨리머스

MailAlias

active

true

Property

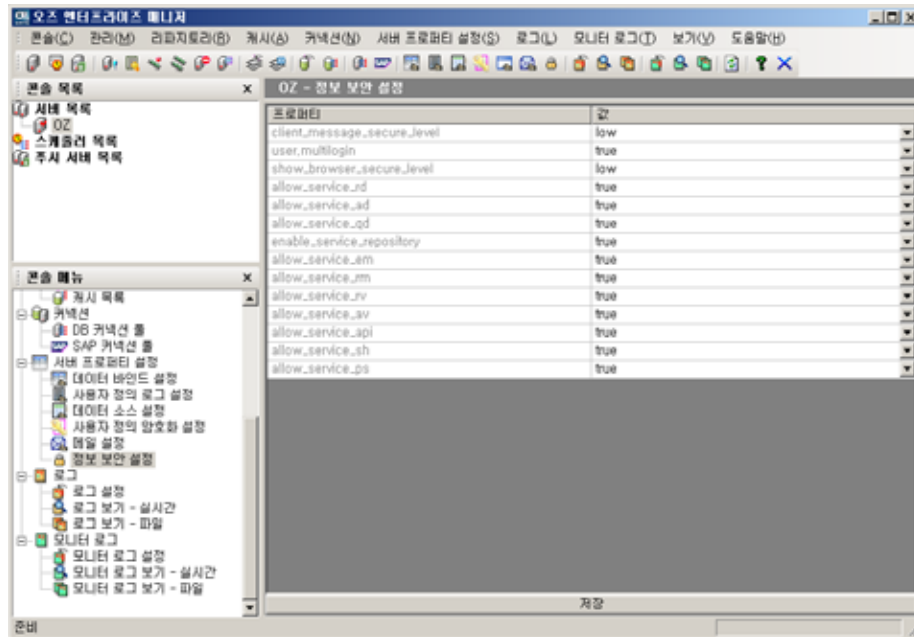
fromSend	forcs@forcs.com
toSend	oz@forcs.com
SMTPServer	smtp.gmail.com
SMTPServerPort	465
SMTPUserID	forcs@forcs.com
SMTPUserPassword	UserPassword
SMTPUserID_encrypted	
SMTPUserPassword_encr	
EnableSSL	true
SendRetryCount	
SendRetryPeriodTime	
PrefixSubjectMessage	

확인

취소

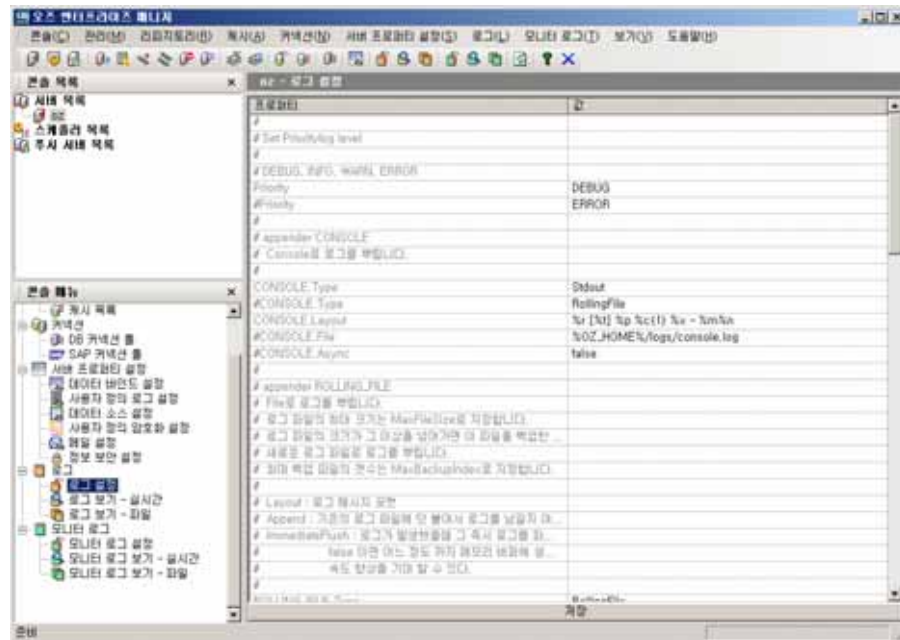
[]

가

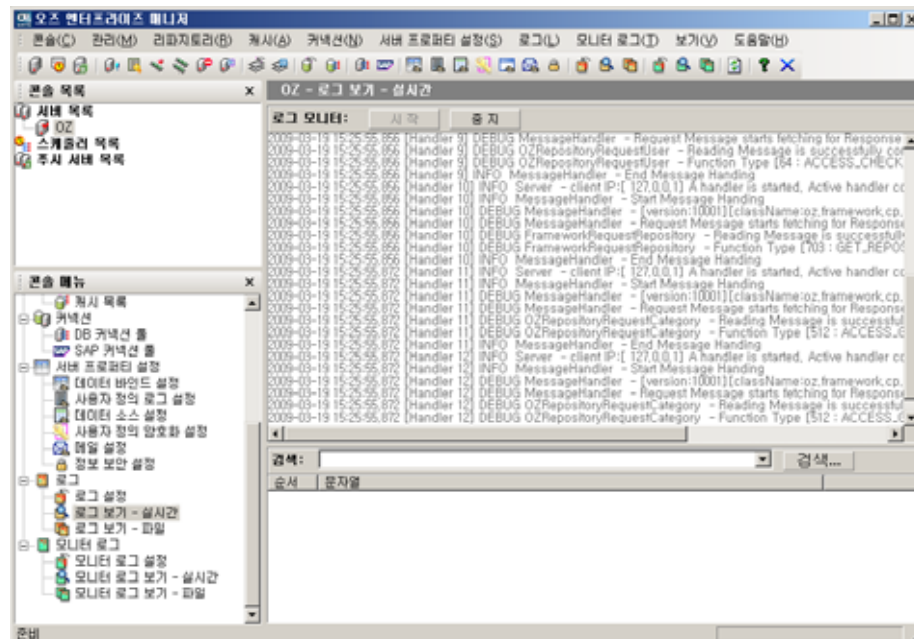


"spmgr.properties"

[]

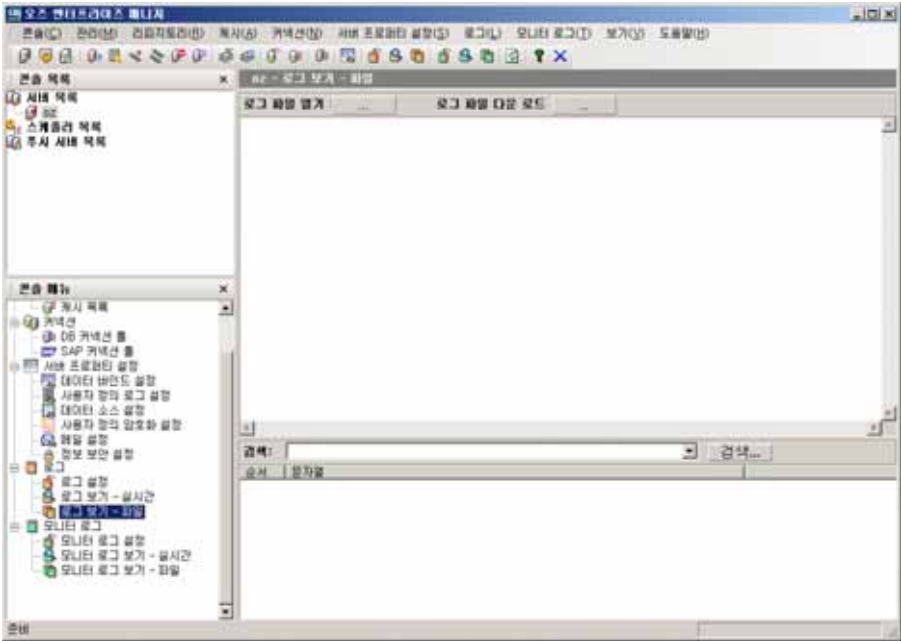


"log.properties"



가



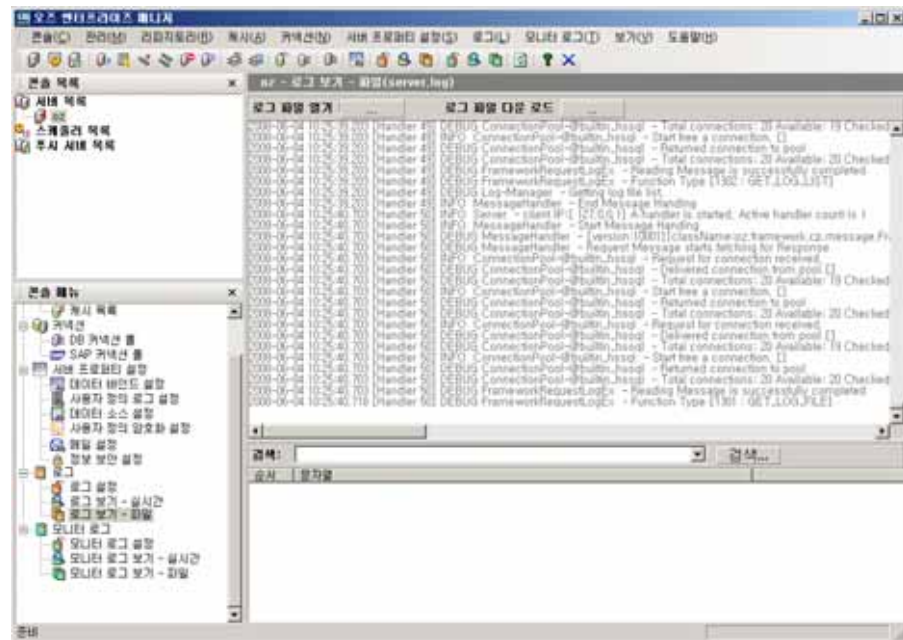


[...]

가

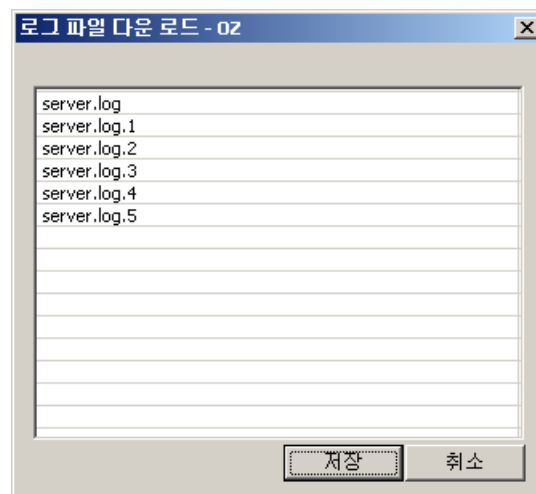


[]



[...]

가

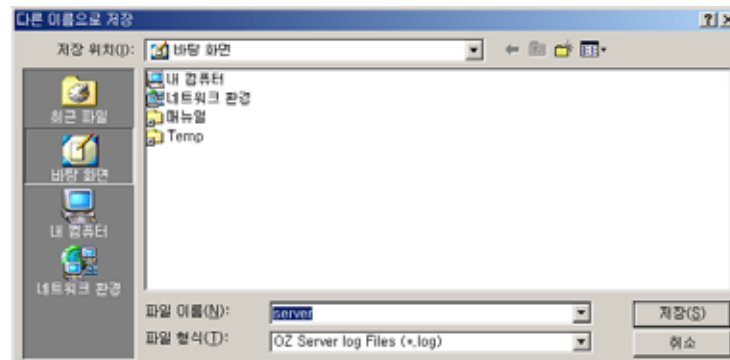


<Shift>

<Ctrl>

[]

가



[]

1)

```
"server.log", "server.log.1", "server.log.2"
```

test

[]

```
"test.log", "test.log.1", "test.log.2"
```

2)

```
"server.log", "server.log.1", "server.log.2"
```

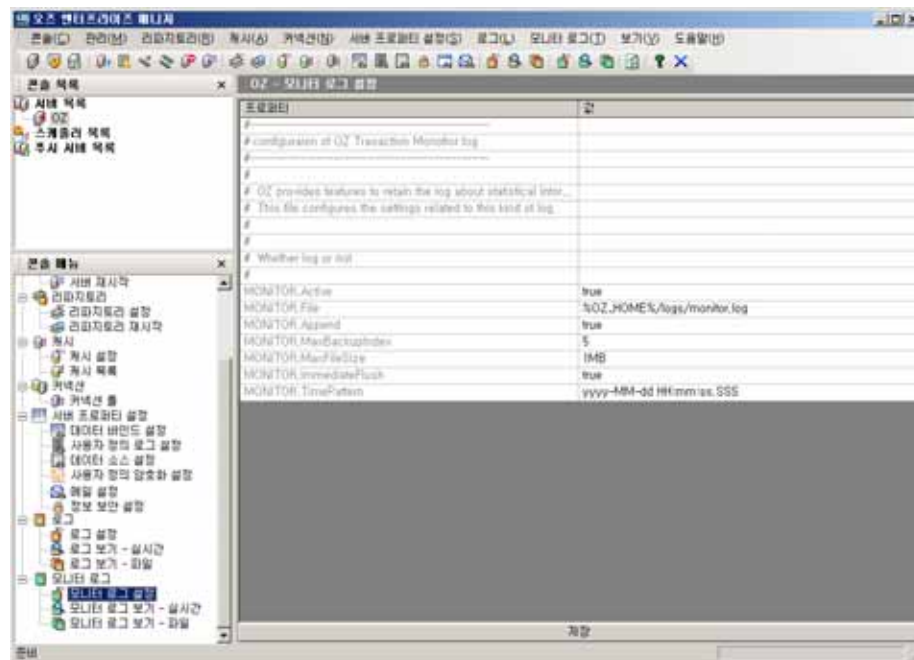
[

]

"server.log", "server.log.1",

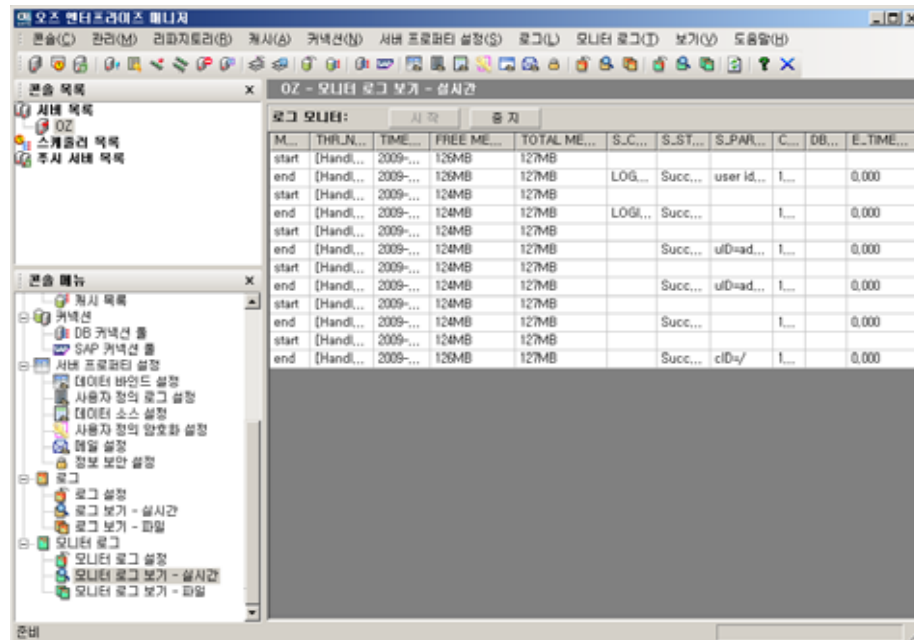
```
"server.log.2"
```

[]

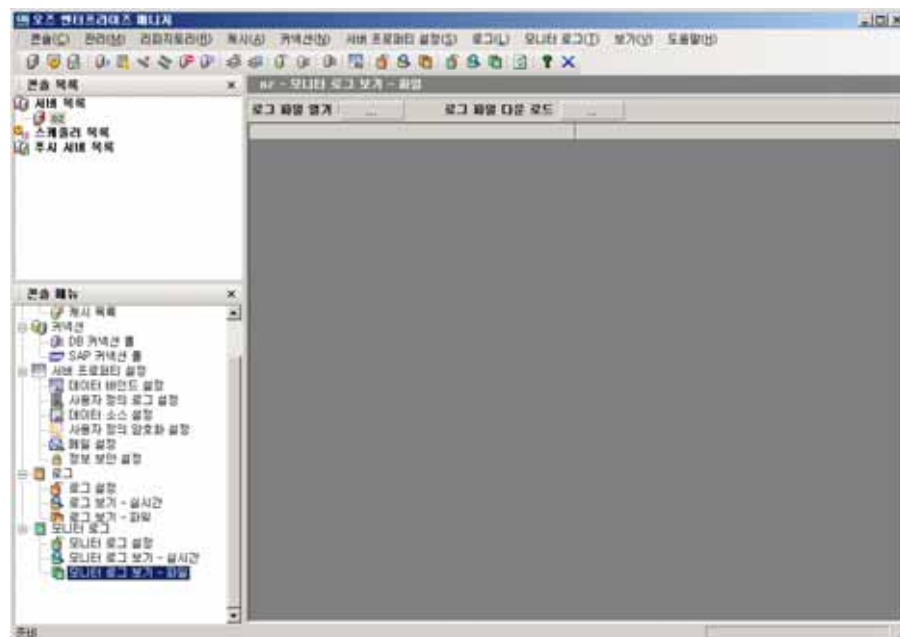


"monitor.properties"

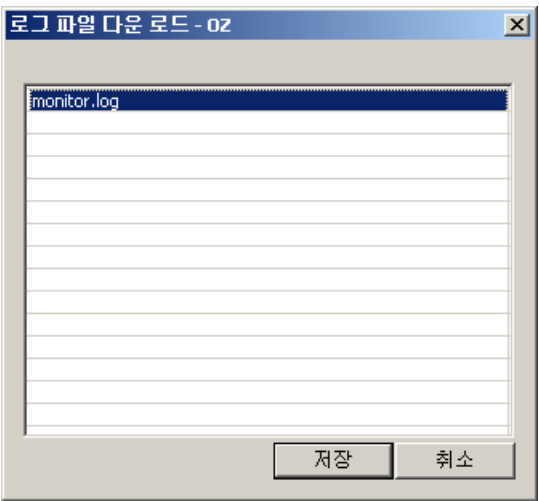
()



"monitor.properties"



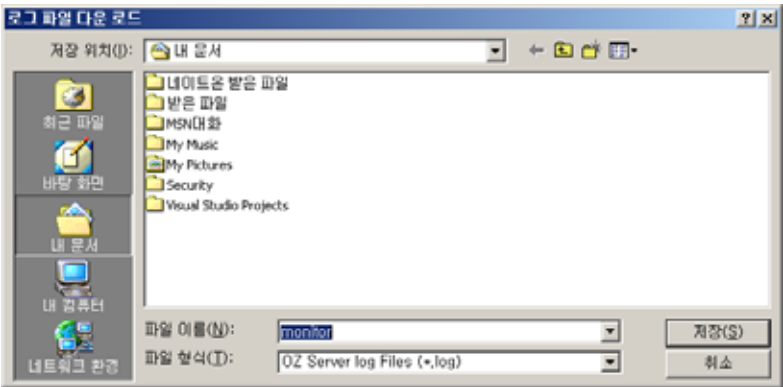
가



<Shift> <Ctrl>

[]

가



[]

- 1)
"monitor.log", "monitor.log.1", "monitor.log.2"
[] test
"test.log", "test.log.1",
"test.log.2"
- 2)
"monitor.log", "monitor.log.1", "monitor.log.2"
[] "monitor.log",

"monitor.log.1", "monitor.log.2"

■

[]

■

[]

■

■

■

(F5)

PC

[PC]

'PC

'가

PC IP Address, Mac Address, HDD Serial

[]

PC

가

- 가
가 [] - [가]
[
가]
가 (📅)
가

새 스케줄러

이름

IP

127.0.0.1

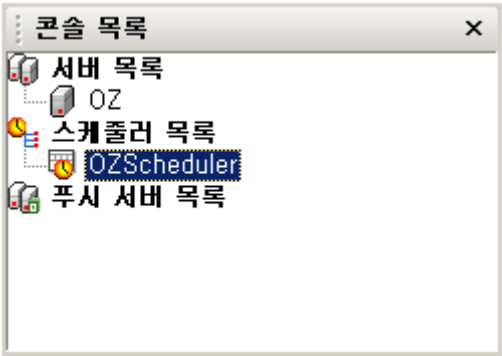
포트

9521

추가

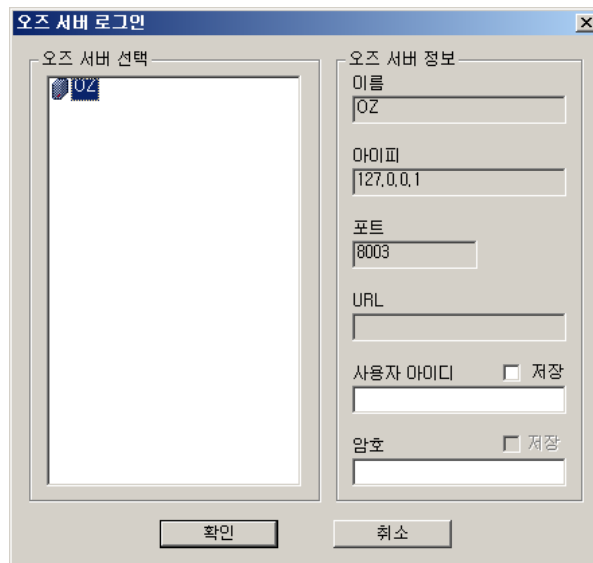
취소

" " [가] [] [] 가 가



- 가
[]

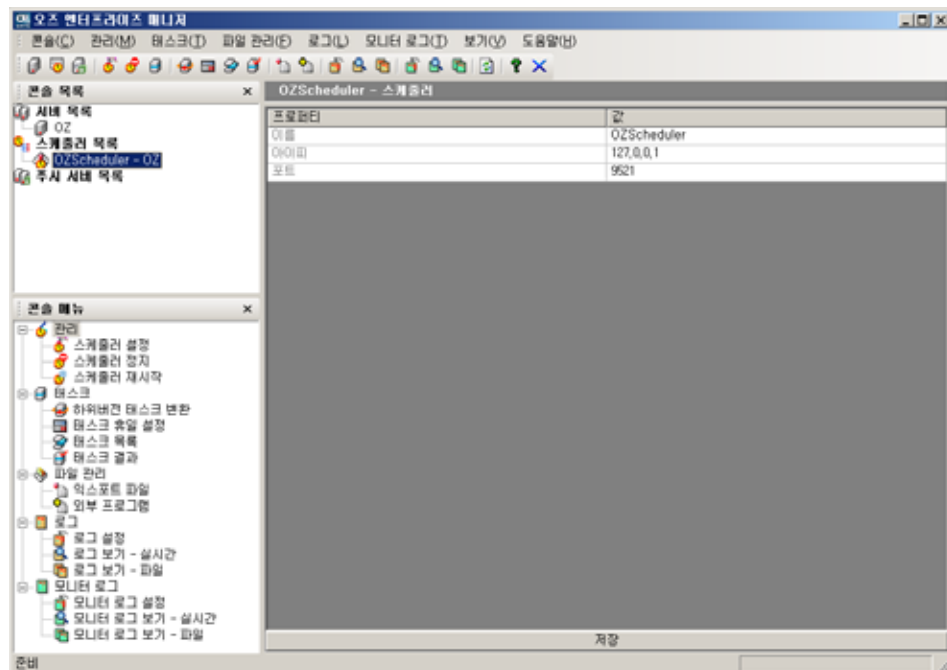
" ()



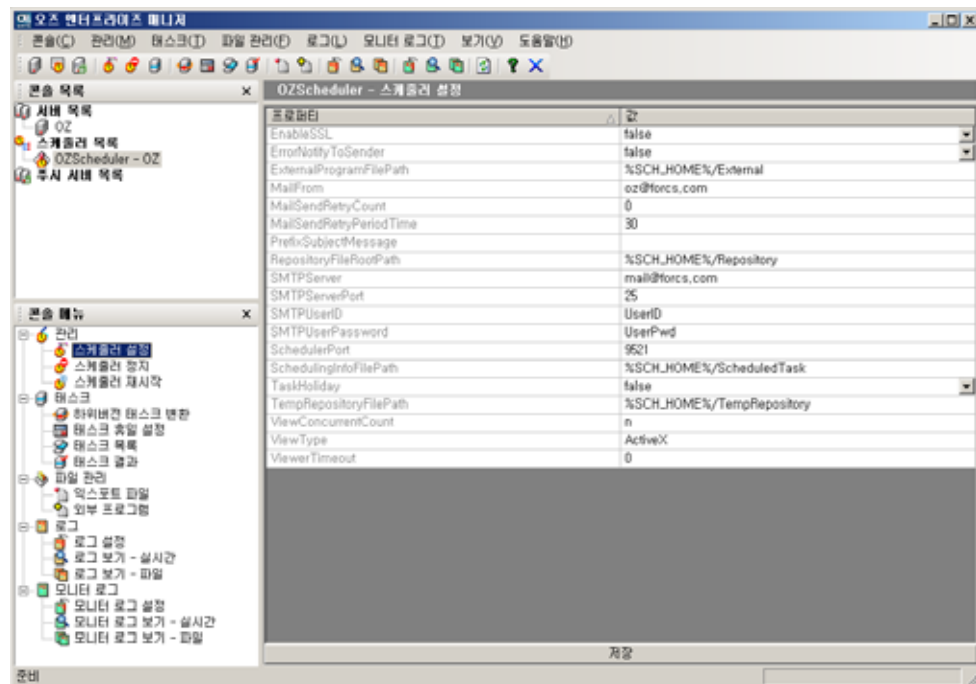
" " " "

가

" " " " []



[]



EnableSSL	SSL
ErrorNotifyToSender	
ExternalProgramFilePath	
MailFrom	
MailSendRetryCount	
MailSendRetryPeriodTime	
PrefixSubjectMessage	
RepositoryFileRootPath	
SMTPServer	SMTP IP
SMTPServerPort	SMTP

SchedulerPort	
SchedulingInfoFilePath	
TaskHoliday	
TempRepositoryFilePath	
ViewConcurrentCount	
ViewType	
ViewerTimeOut	가

■

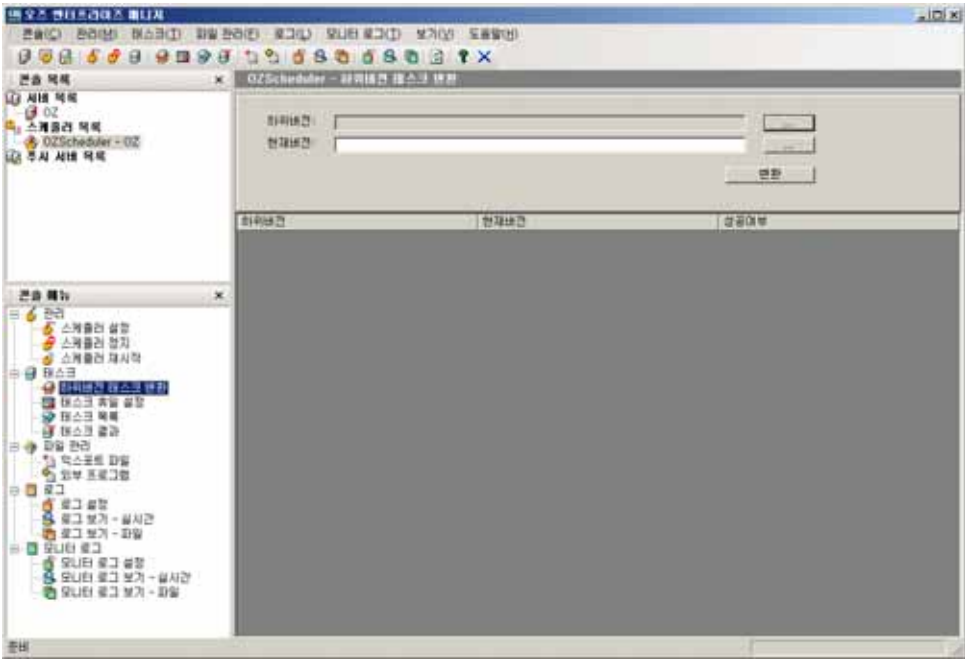
■

가

■

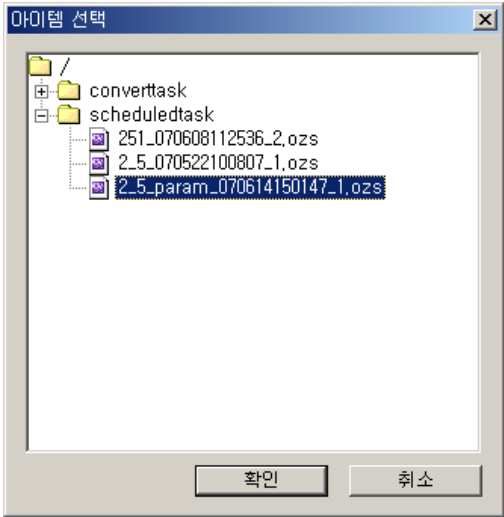
2.5

OZS()



OZS " " [...] "가 . "

" OZS [] .



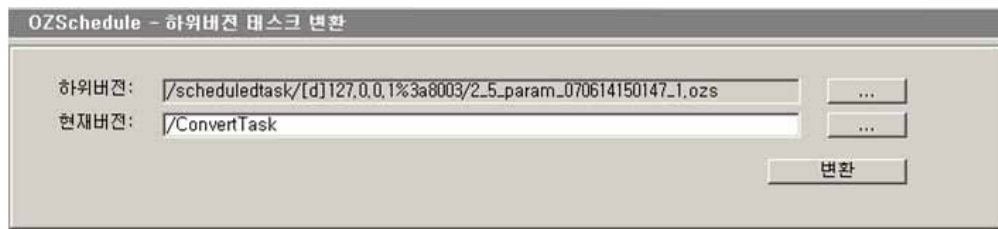
" " [...] " "

" " OZS .

OZS .

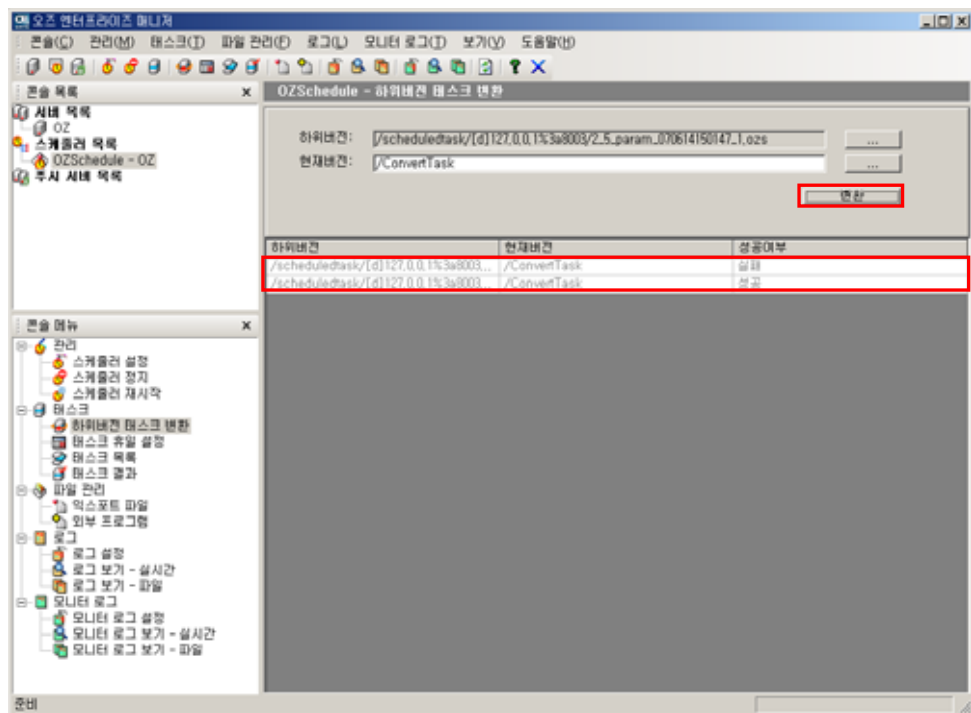
OZS 가 "%SCH_HOME%/ConvertTask"

"/ConvertTask"



[]

2.5 OZS



- OZS

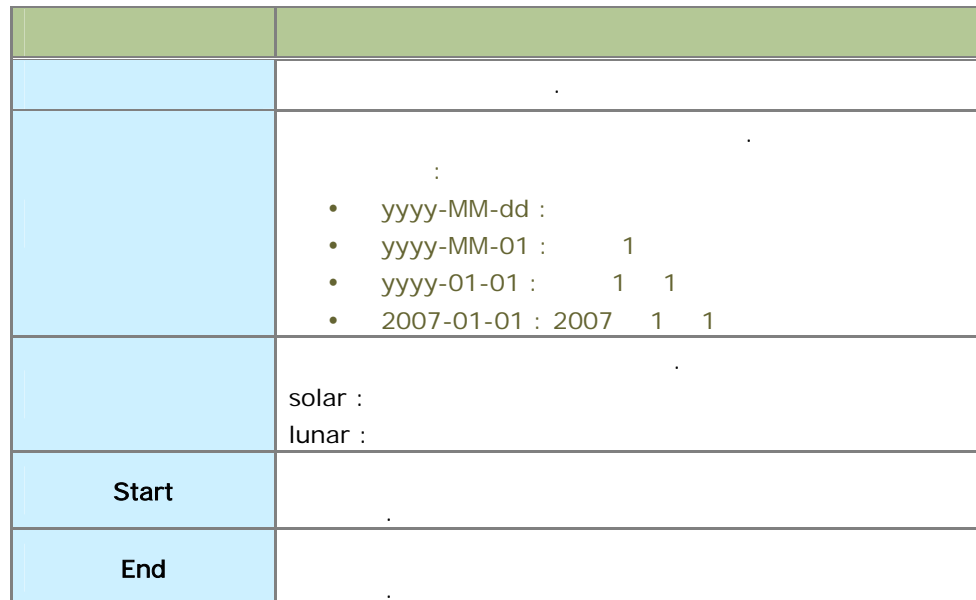
"SchedulingInfoFilePath"

가

- 2.5 OZS

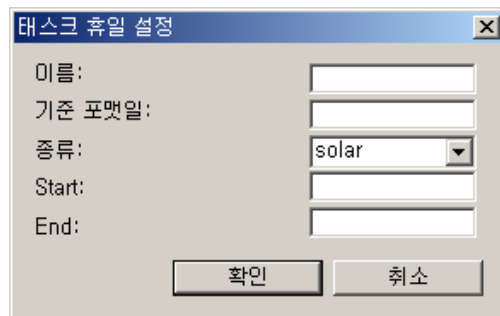
가

-



conf

"TaskHoliday.xml" [] - []
 "TaskHoliday"
 "true"
 가, , []
 가
 . []
 - 가
 [가] "
 " [] 가
 가 .



태스크 휴일 설정

이름:

기준 포맷일:

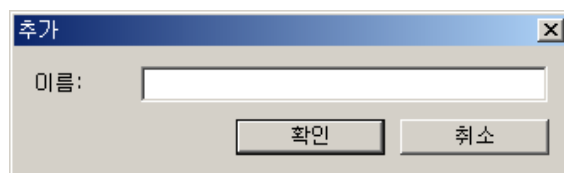
종류: solar

Start:

End:

확인 취소

- []
 " "
 - []
 .
 - 가
 [가] " 가
 " [] 가 .

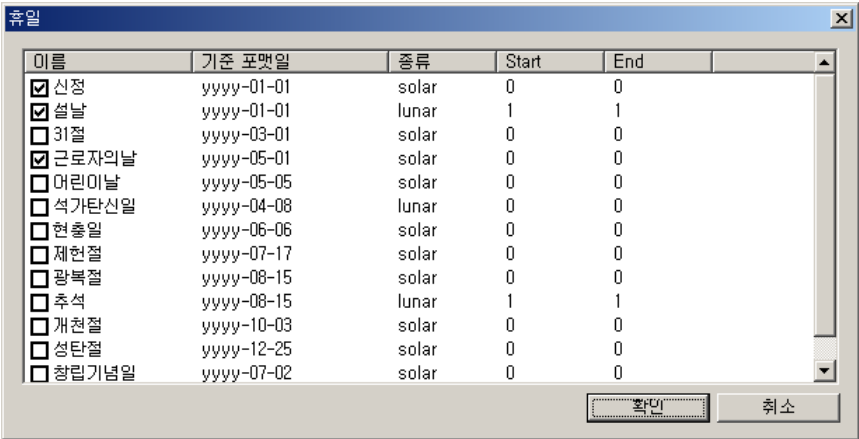


추가

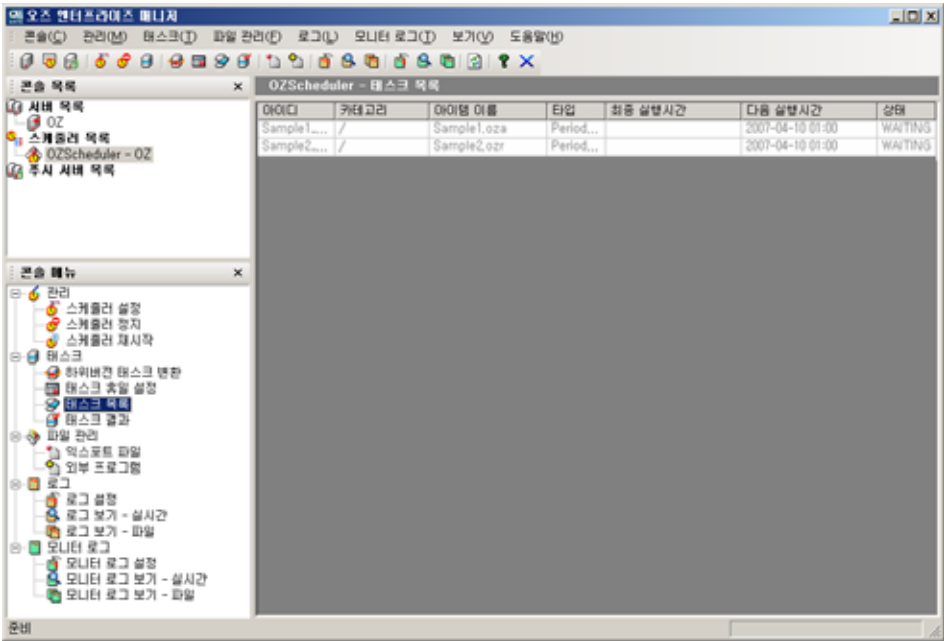
이름:

확인 취소

가 [가]



가, , , ,



	가
	가
	WAITING , PAUSE

- 가 -

[가] -

[]

가

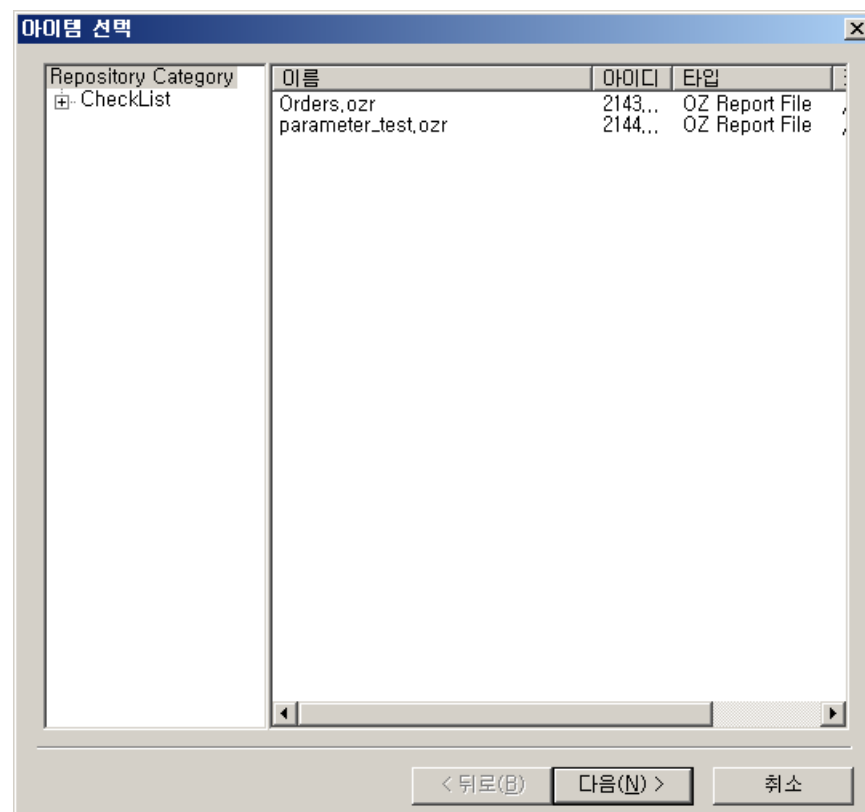
추가	▶	보고서 생성 태스크(R)
수정...(C)		OZU 생성 태스크(Q)
삭제(D)		SDM 생성 태스크(S)
결과 보기...(V)		프린트 생성 태스크(P)
시작(S)		
중지(P)		

[가] - []

"

"가 ,

가



[] " "가 .

[ViewType ActiveX]
ViewType ActiveX
가 .



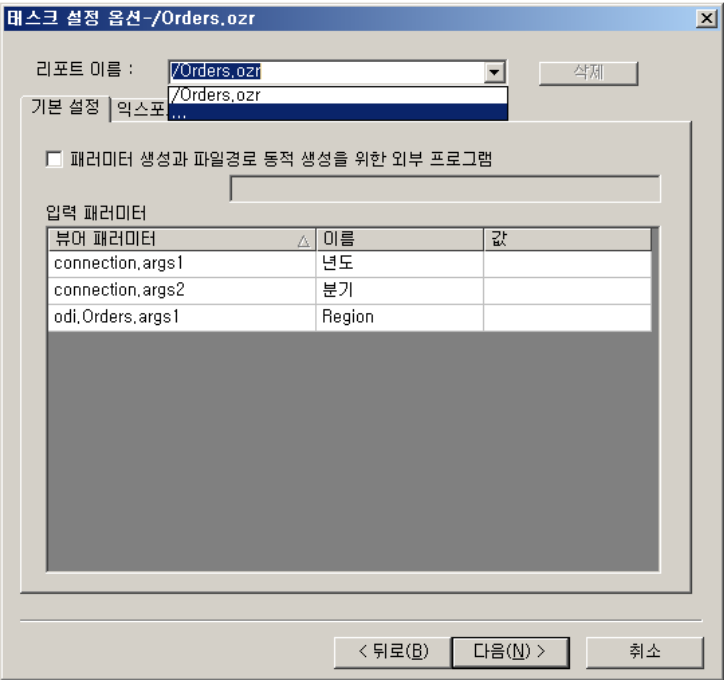
" " , []

가 .

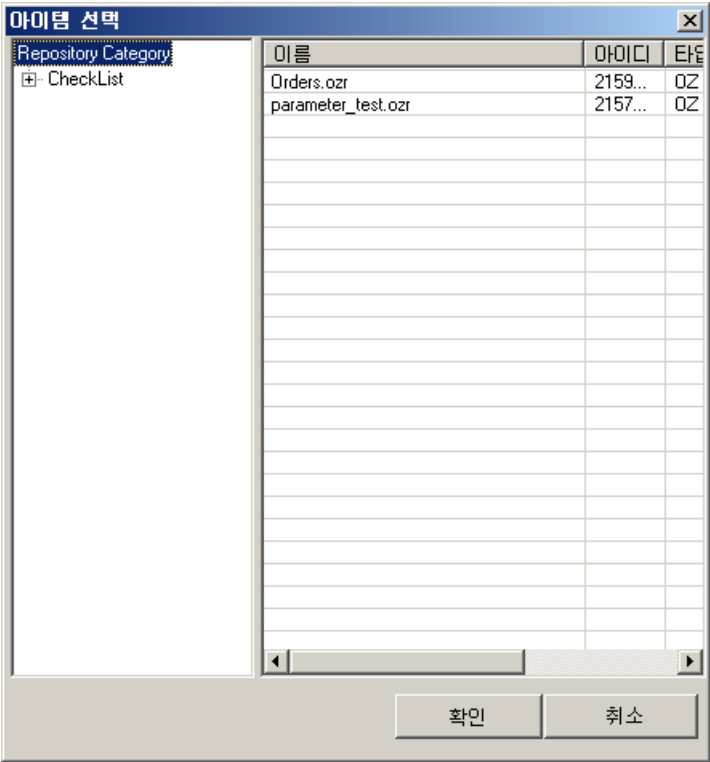
: 가 .

"..."

"가 .



" " 가 []



가

메스크 설정 옵션 - /Orders.ozr

리포트 이름 : /parameter_test.ozr 삭제

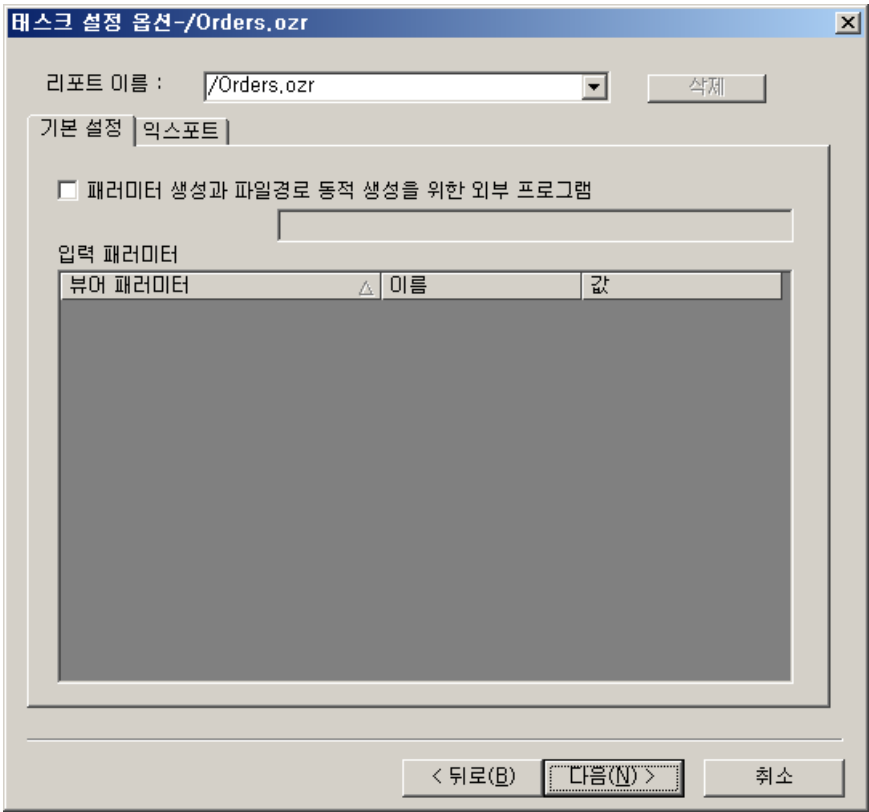
기본 설정 | 엑스포

☐ 패러미터 생성과 파일경로 동적 생성을 위한 외부 프로그램

입력 패러미터

뷰어 패러미터	이름	값
child1.connection.args1	formparam	1234
child1.connection.args2	odiparam	f_odiparam
child1.odi.parameter_test.args1	odiparam	test
child1.odi.parameter_test.args2	odiparam2	test2

< 뒤로(B) 다음(N) > 취소



"

(" " " ")

" "

:

가

가 " (

, , PDF , OZD)" "

"

) 1

가

\$OZ.#D/ /#D \$

\$OZ ~ \$	
#D/ ~ /#D	
	[] "Date Format"
	+_n_day (n_day :)

[Date Format]

G	Year designator	Text	AD
y	Year	Number	1996
M	Month in year	Text or Number	July & 07 (locale)
d	day in month	Number	10
h	hour in am/pm (1~12)	Number	12
H	Hour in day (0~23)	Number	0
m	Minute in hour	Number	30
s	Second in minute	Number	55
S	Millisecond	Number	978
E	day in week	Text	Tuesday(locale " ")
D	day in year	Number	189
F	day of week in month	Number	2 (2nd Wed in July)
w	Week in year	Number	27
W	Week in month	Number	2
a	am/pm marker	Text	PM
k	hour in day (1~24)	Number	24
K	hour in am/pm(0~11)	Number	0
z	Time zone	Text	Pacific Standard Time

"	Escape for text	Delimiter	"
""	Single quote	Literal	"

2002 10 2 가

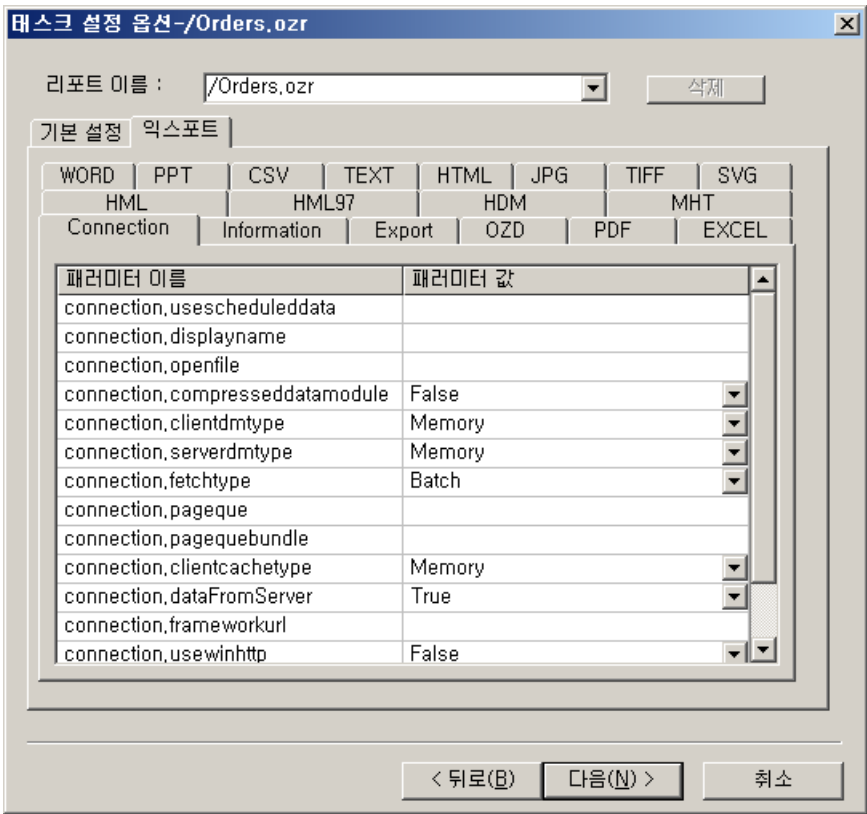
	(FromDate, ToDate)
	" "
	FromDate=\$OZ.#D/yyyy-MM-dd 00:00:00/#D\$ ToDate=\$OZ.#D/yyyy-MM-dd 23:59:59/#D\$
	FromDate=2002-10-02 00:00:00 ToDate=2002-10-02 23:59:59
	" -
	"
	\$OZ.#D/yyyy-MM-dd/#D\$.xls
	2002-10-02.xls
	" -
	"
	ReportName_\$OZ.#D/yyyy-MM-dd/#D\$.sdm
	ReportName_2002-10-02.sdm
	PDF
	1 가
	" -" pdf
	\$OZ.#D/yyyyMMdd/#D+1\$.pdf
	20021001.pdf

) 2

" -

가
=

\$OZ.#P_	ex) \$OZ.#P_FromDate = 2002-10-01
\$OZ.#EXF_USER	ex) \$OZ.#EXF_DM = MyData.sdm
\$OZ.#EXF_XLS	ex) \$OZ.#EXF_XLS = MyExcel.xls
\$OZ.#EXF_OZD	OZD
\$OZ.#EXF_PDF	PDF
\$OZ.#EXF_CSV	CSV
\$OZ.#EXF_HTML	HTML
\$OZ.#EXF_JPG	JPG
\$OZ.#EXF_PPT	PPT
\$OZ.#EXF_SVG	SVG
\$OZ.#EXF_TEXT	TEXT
\$OZ.#EXF_TIFF	TIFF
\$OZ.#EXF_WORD	WORD



- " .mailattach" "True"
- MHT "mht.mailcontent" "True" mht

, [] []

태스크 설정 옵션 - /Orders.ozr

전자메일 발송 | 스케줄 시간 |

☐ 전자메일 발송

☐ 내용에 HTML 포함

☐ 수신자에게 에러 통보

수신

참조

숨은 참조

제목

내용 ☐ HTML 사용

< 뒤로(B) 마침(F) 취소



" HTML "

PDF OZD, XLS

HTML

" "

가

"HTML "

HTML

태스크 설정 옵션 - /Orders.ozr

전자메일 발송 스케줄 시간

스케줄 타입

☐ 즉시 실행 ☐ 한번 실행 ☒ 주기적 실행

주기설정

시작: 2009-02-06 종료: 9999-12-31

태스크 휴일 설정

☒ 일별 ☒ 매 1 일 마다

☐ 주별 ☐ 평일마다

☐ 월별

수행시간

☒ 하루 한번 수행: 오전 1:00

☐ 하루 여러 번 시작: 오전 12:00 종료: 오후 11:00

시간간격: 0:00

☐ 사용자 정의

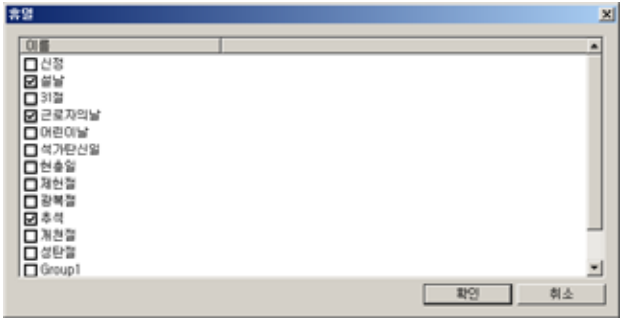
예) 1:00,11:00,21:30 (빠른 시간 순서대로 모두 붙여적습니다)

< 뒤로(B) 마침(F) 취소

		.
		.
		.
		.
		" "
	"31	(")
		(,)

		(가) 1 5 20 1,5,20
		()) AM 1 30 , PM 5 10 01:30, 17:10

:
[]
" " []
]



[ViewType None]

ViewType None

, ,
가 .

마스크 설정 옵션 - /Orders.ozr

리포트 이름 :

☐ 패러미터 생성과 파일경로 동적 생성을 위한 외부 프로그램

입력 패러미터

이름	값
[FORM].년도	
[FORM].분기	
Orders.Region	

이미지 URL 입력 사용자 정의 패러미터

URL

< 뒤로(B) 다음(N) > 취소

" " , []

가 .

: 가 " ViewType

ActiveX "

, , URL ,

.

" "

(" " " ")

.

" " ,

Fetch , Client DM , Server DM .

" URL " " OZD

URL .

: "fetch_type" "concurrent" "client_dm_type"
"normal" , "normal"
"memory" .

:
" ViewType ActiveX -
"

[] [] , []
], []

- OZD
OZD " "
OZD



: "ozd.mailattach" "True"

태스크 설정 옵션 - /Orders.ozr

익스포트 전자메일 발송 스케줄 시간

☐ 전자메일 발송

☐ 내용에 HTML 포함

☐ 수신자에게 에러 통보

수신

참조

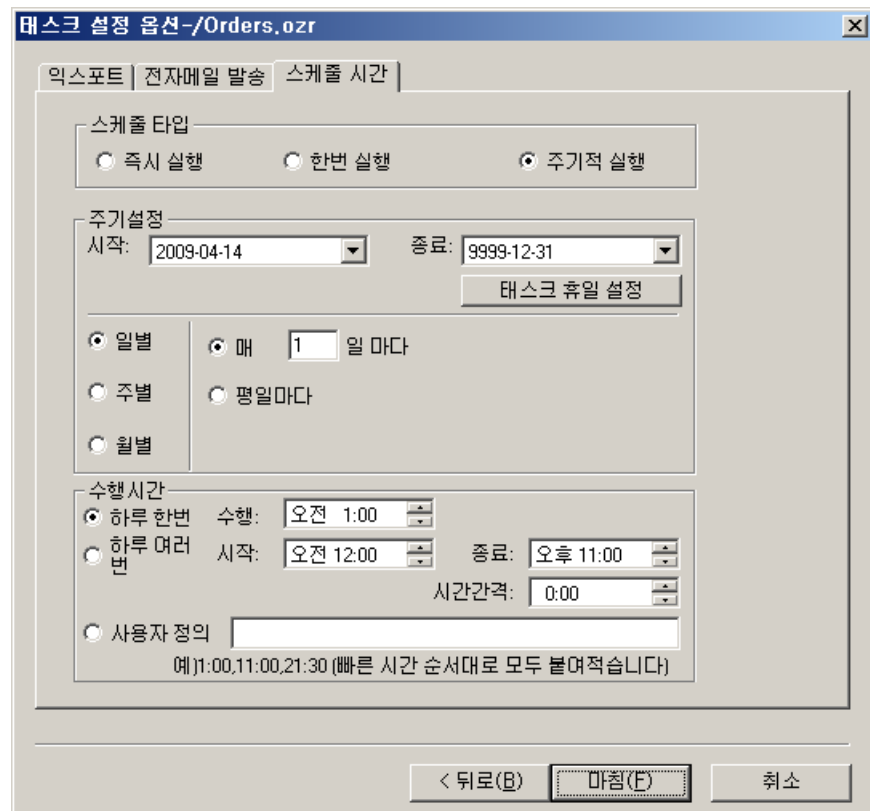
숨은 참조

제목

내용 ☐ HTML 사용

< 뒤로(B) 마침(F) 취소

: [] " 가 -
- ViewType ActiveX "



```

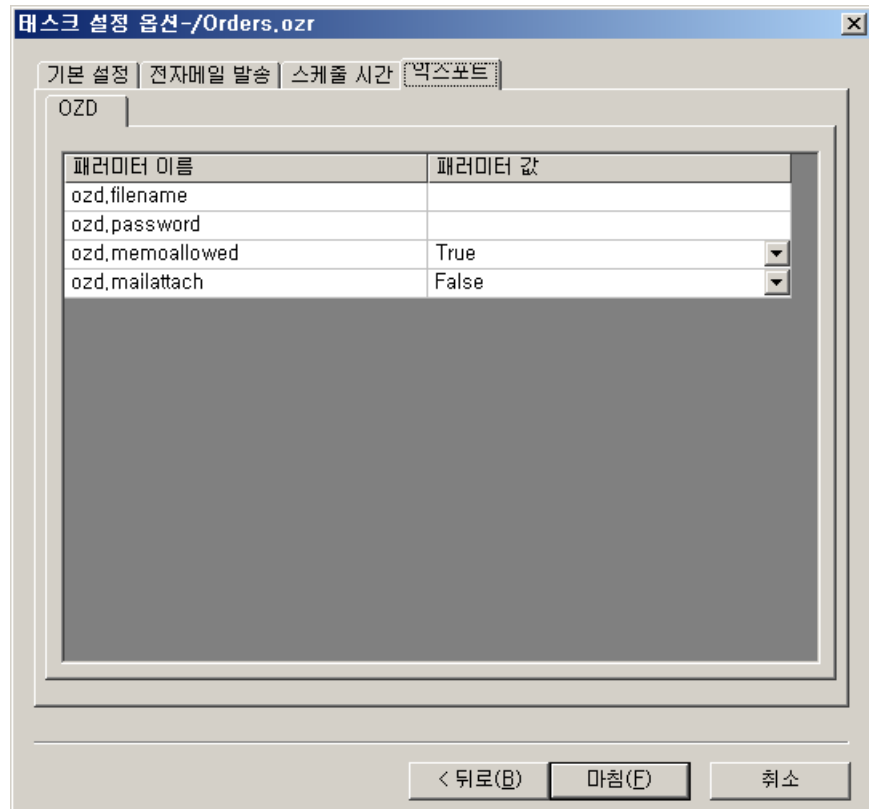
: [ ] " 가 -
    " " ViewType ActiveX "

```

OZD

[OZD]

" OZD



- 가 - OZU

OZU

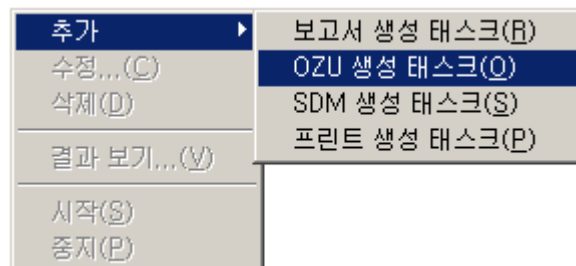
OZU

[가] -

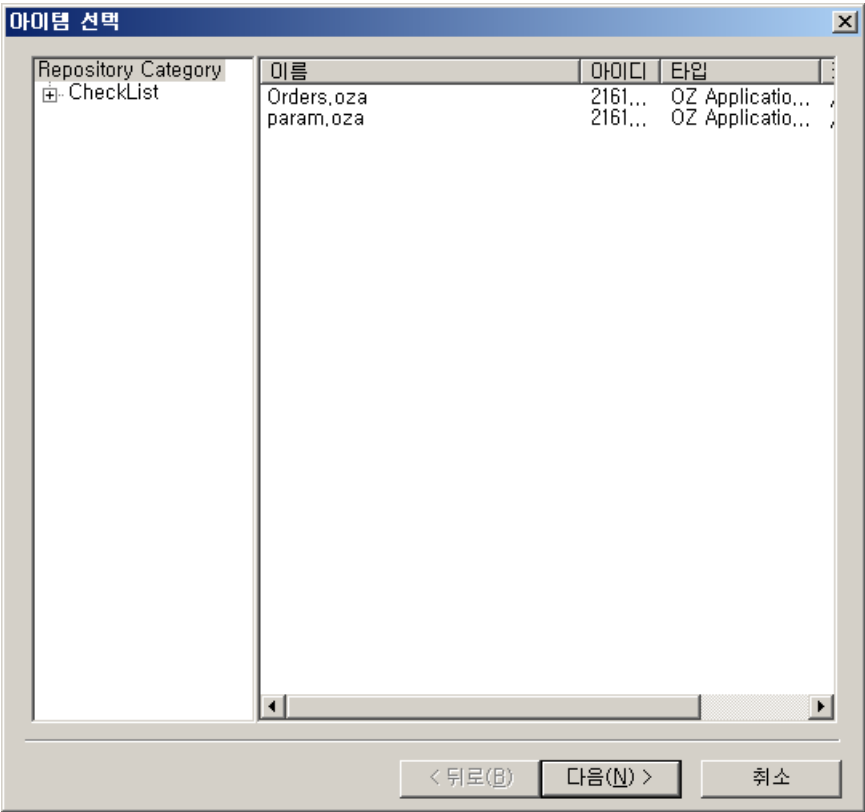
[OZU]

OZU

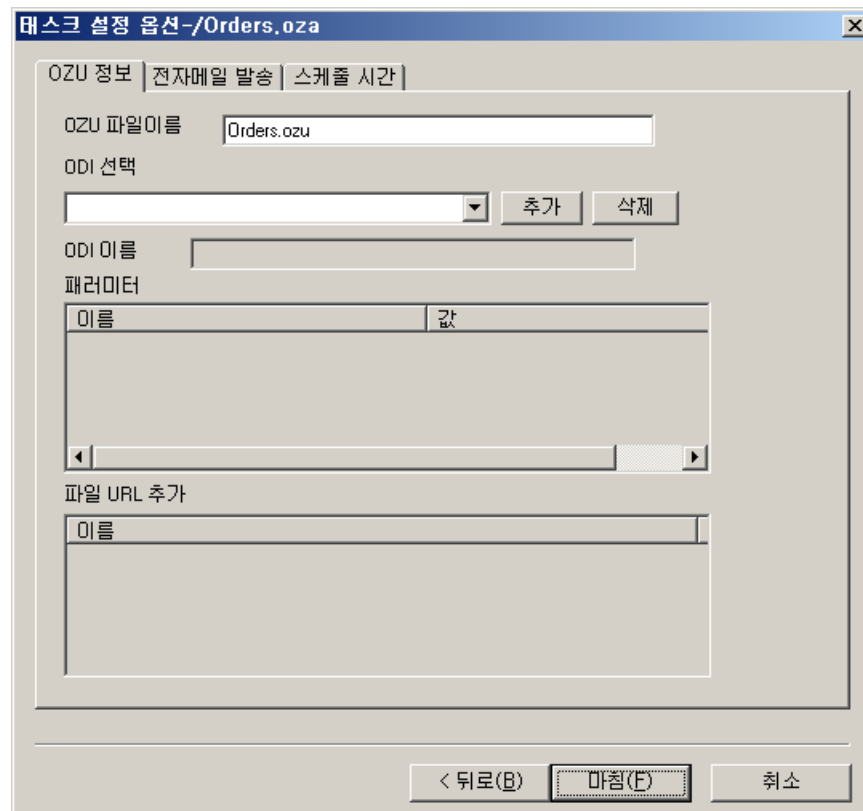
가



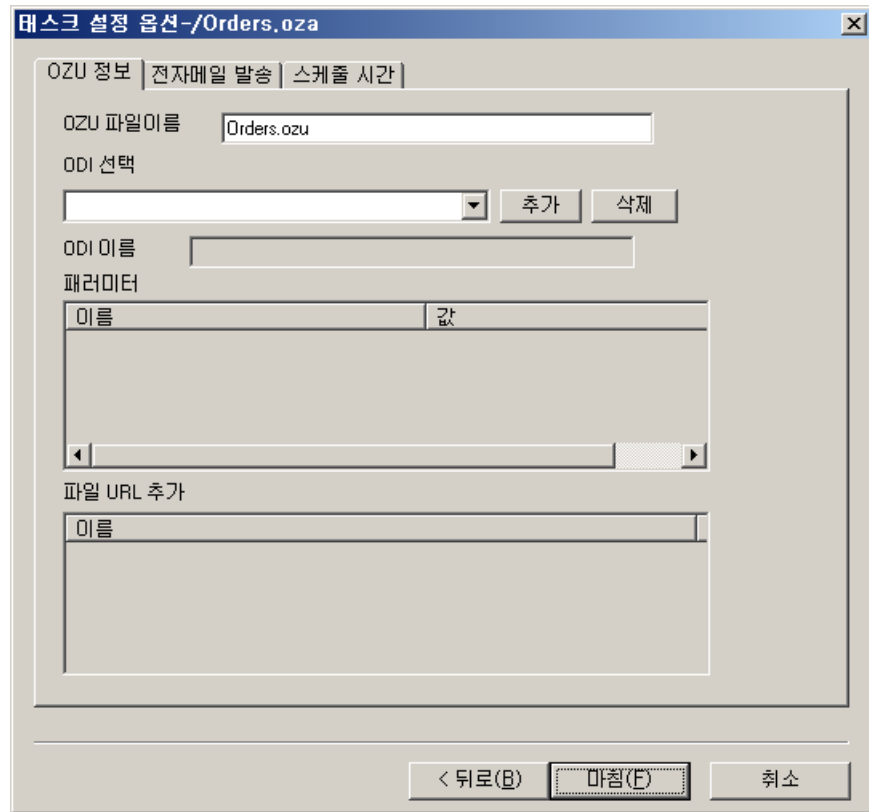
가



[] OZU , ,
" "가 .



- OZU
OZU , ODI



OZU , [가] OZA ODI
가 .

태스크 설정 옵션 - /Orders.ozu

OZU 정보 | 전자메일 발송 | 스케줄 시간

OZU 파일이름

ODI 선택

ODI 이름

패러미터

이름	값
PROJECTID	
PROJECTTITLE	
ReqIDQuery	

파일 URL 추가

이름	

< 뒤로(B) 마침(F) 취소

가 가 ODI

미스크 설정 옵션 -/Orders.ova

☐ OZU 정보
 ☒ 전자메일 발송
 ☐ 스케줄 시간

☐ 전자메일 발송

☐ 내용에 HTML 포함
☐ 수신자에게 예러 통보

수신

참조

숨은 참조

제목

내용 ☐ HTML 사용

```

: [      ]      "      가 -
    "      ViewType  ActiveX      "

```

```
" " ViewType  ActiveX "
```

•

■

타스크 설정 옵션 - /Orders.oza

OZU 정보 | 전자메일 발송 | 스케줄 시간 |

스케줄 타입

☐ 즉시 실행
 ☐ 한번 실행
 ☒ 주기적 실행

주기설정

시작: 2009-02-06 종료: 9999-12-31

태스크 휴일 설정

<input checked="" type="radio"/> 일별 <input type="radio"/> 주별 <input type="radio"/> 월별	<input checked="" type="radio"/> 매 1 일 마다 <input type="radio"/> 평일마다
---	---

수행시간

☒ 하루 한번 수행: 오전 1:00
☐ 하루 여러 번 시작: 오전 12:00 종료: 오후 11:00
시간간격: 0:00

☐ 사용자 정의 []
(예) 1:00,11:00,21:30 (빠른 시간 순서대로 모두 붙여적입니다)

< 뒤로(B)
 마침(F)
 취소

```

: [      ]      "      가 -
      "      ViewType  ActiveX      "

```

- 가 - SDM

(ODI)

(SDM)

SDM

[가] -

[SDM]

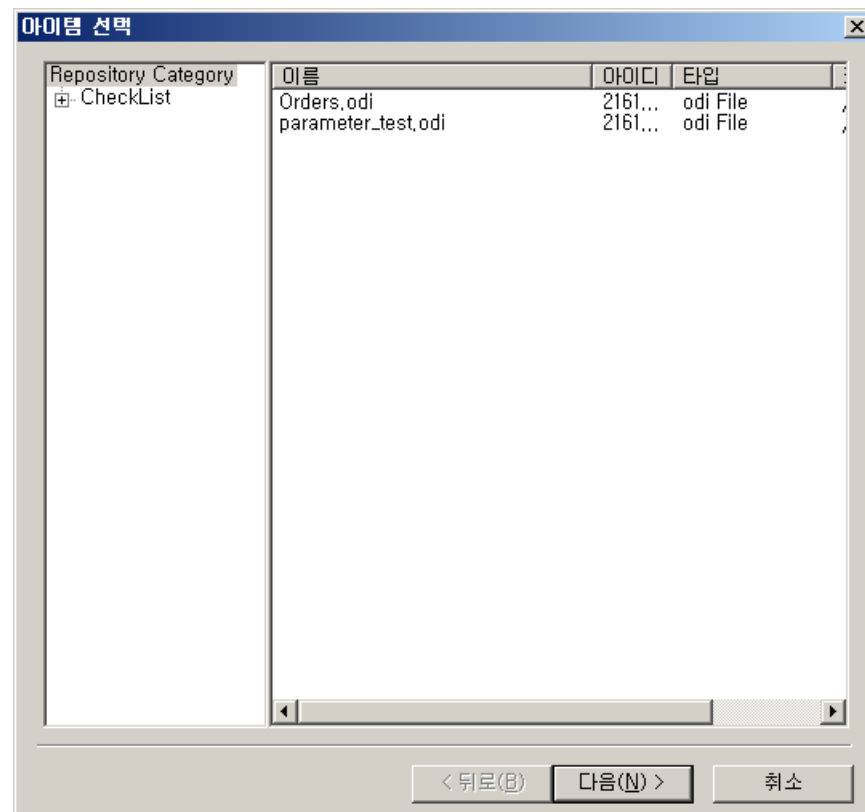
SDM

가 .

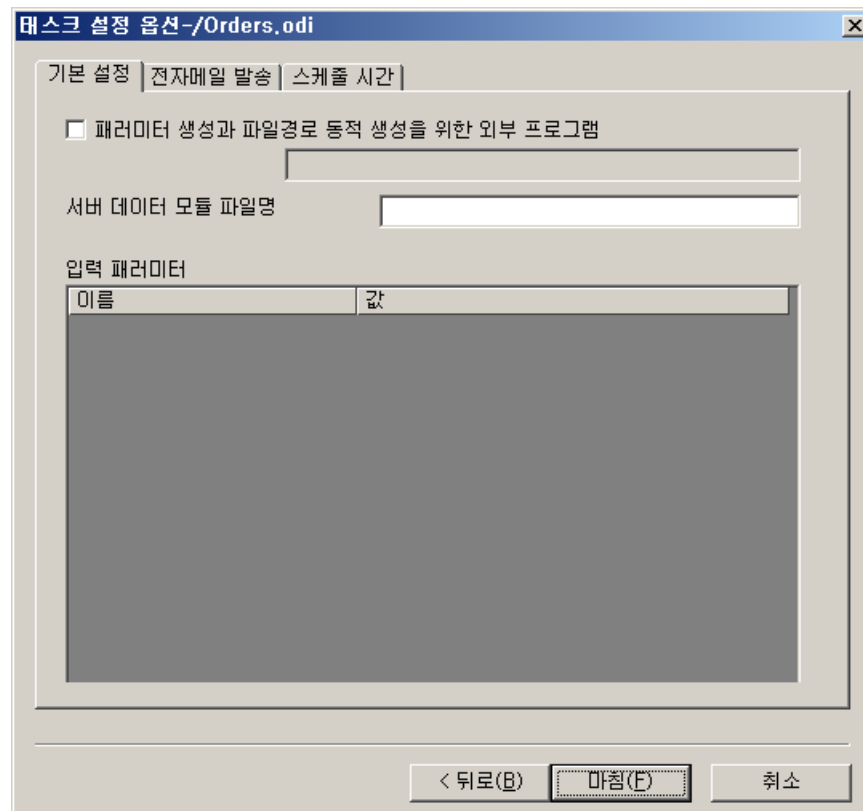
추가	보고서 생성 태스크(R)
수정...(C)	OZU 생성 태스크(Q)
삭제(D)	SDM 생성 태스크(S)
결과 보기...(V)	프린트 생성 태스크(P)
시작(S)	
중지(P)	

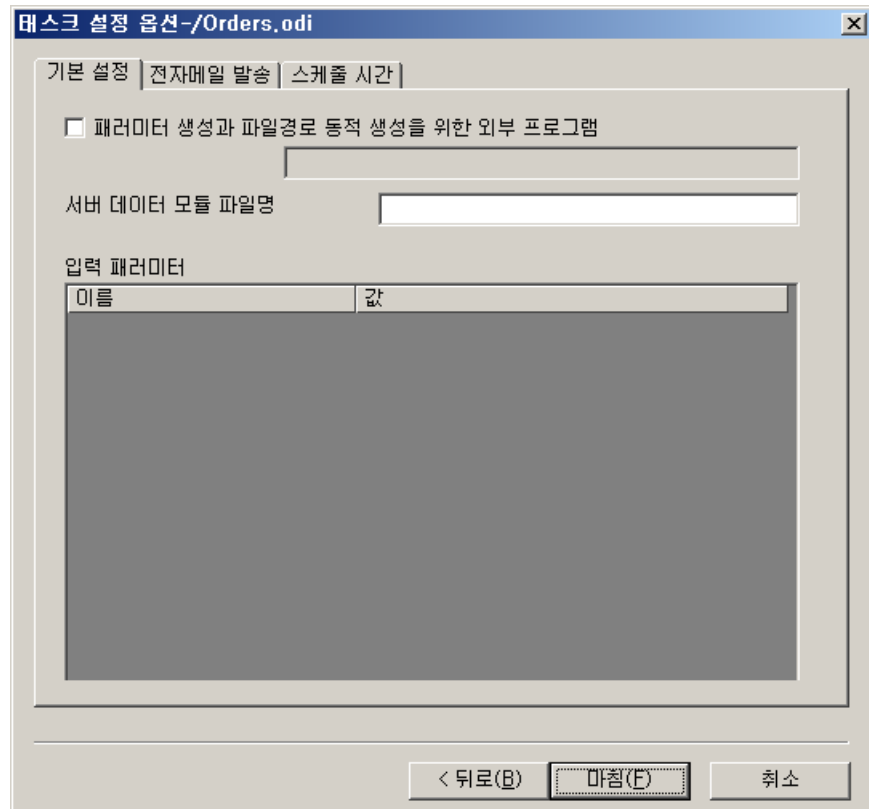
ODI

가



[]
" "가 .





미스크 설정 옵션 -/Orders.odi

기본 설정 | 전자메일 발송 | 스케줄 시간

☐ 전자메일 발송

☐ 내용에 HTML 포함

☐ 수신자에게 예러 통보

수신

참조

숨은 참조

제목

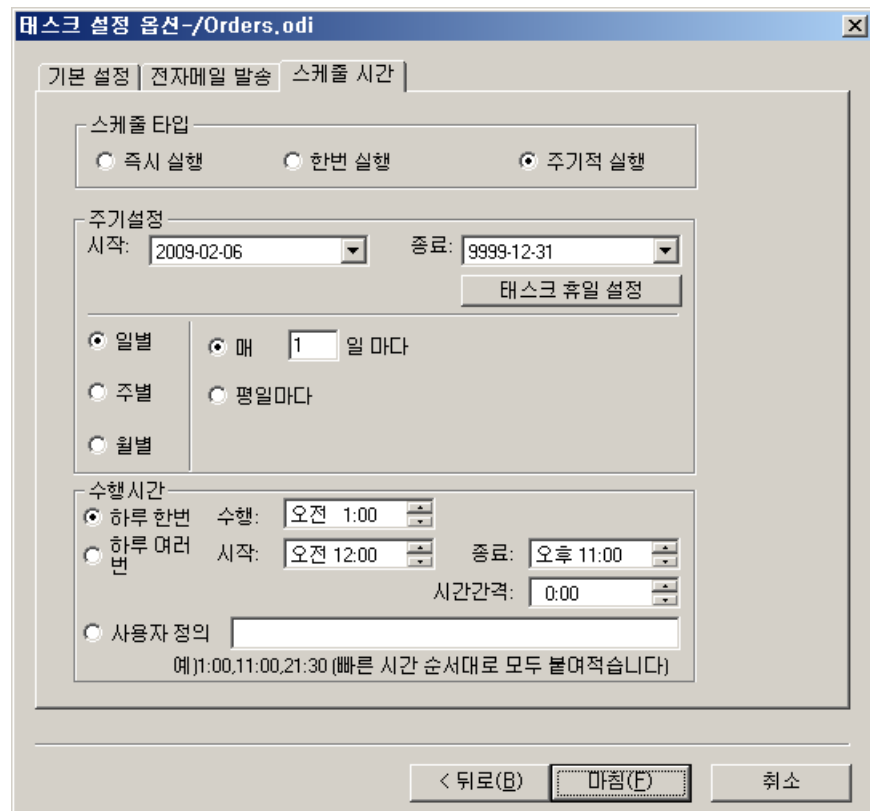
내용 ☐ HTML 사용

< 뒤로(B) 마침(F) 취소

```

: [ ] " 가 -
" " ViewType ActiveX "

```



```

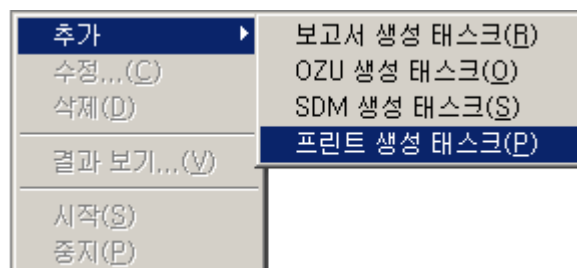
: [      ]      "      가 -
      "      ViewType  ActiveX      "

```

- 가 -

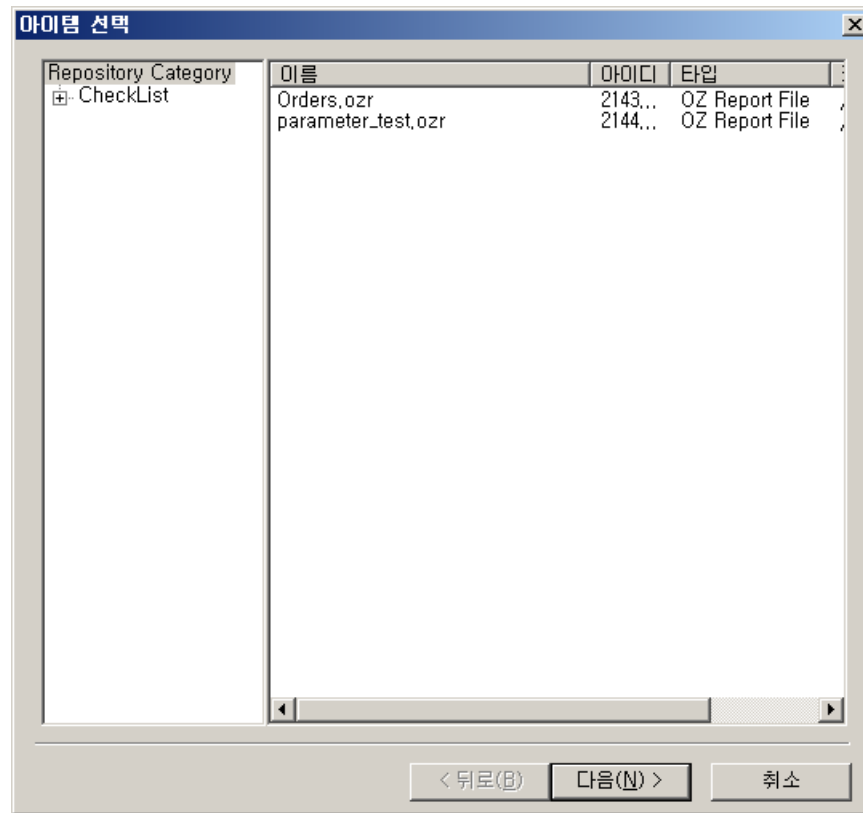
[가] -

[] 가 .



[가] - [] " "가

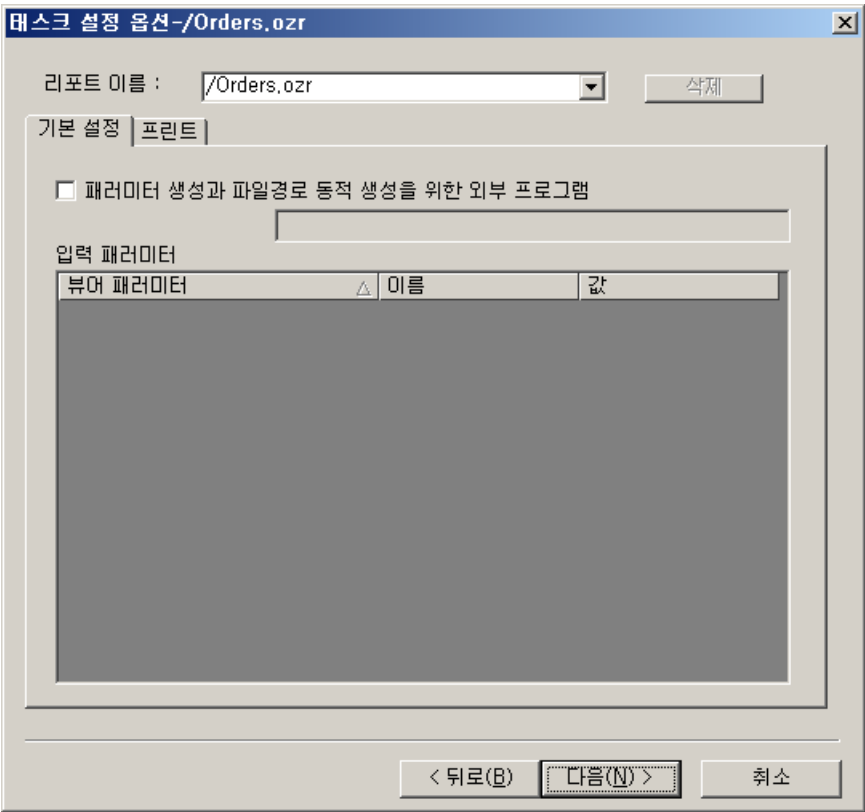
가



[] " "가

" "

,



" " , []

가 .

:

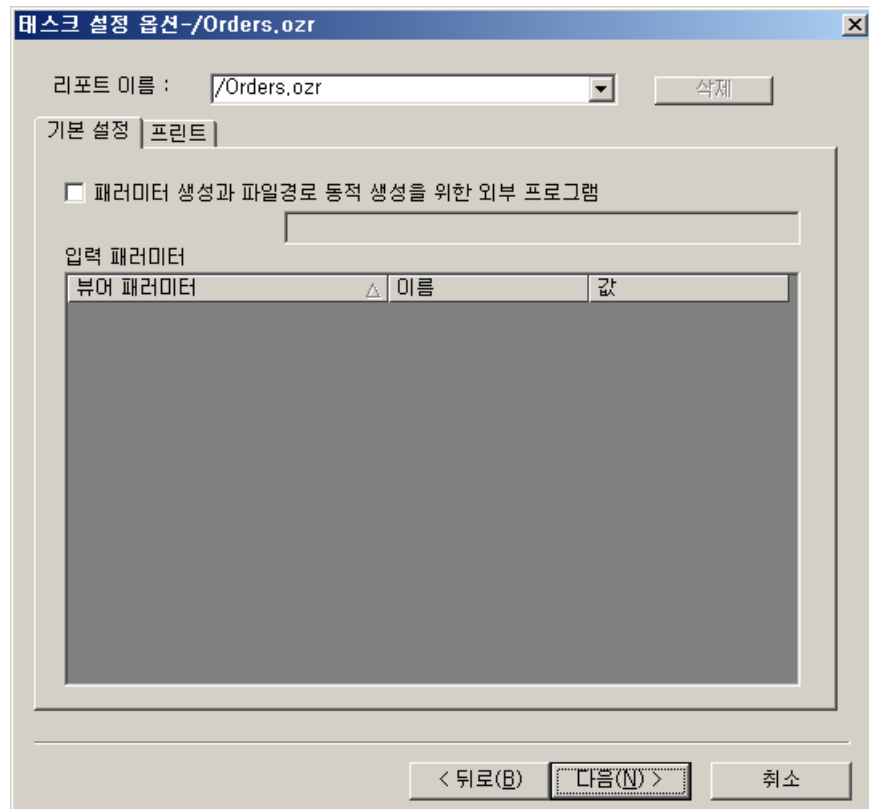
가 " 가 -

" " ViewType ActiveX "

.

■

,



"

(" " " ")

" "

:

" 가 - " " ViewType

ActiveX - "

■

"

"



미스크 설정 옵션 - /Orders.ozr

전자메일 발송 | 스케줄 시간

☐ 전자메일 발송

☐ 내용에 HTML 포함

☐ 수신자에게 예러 통보

수신

참조

숨은 참조

제목

내용 ☐ HTML 사용

< 뒤로(B) 마침(F) 취소



```

: [ ] " 가 -
" " ViewType ActiveX "

```

•

■

1 1

태스크 설정 옵션 - /Orders.ozr

전자메일 발송 스케줄 시간

스케줄 타입

☐ 즉시 실행 ☐ 한번 실행 ☒ 주기적 실행

주기설정

시작: 2009-02-06 종료: 9999-12-31

태스크 휴일 설정

☒ 일별 ☒ 매 1 일 마다

☐ 주별 ☐ 평일마다

☐ 월별

수행시간

☒ 하루 한번 수행: 오전 1:00

☐ 하루 여러 번 시작: 오전 12:00 종료: 오후 11:00

시간간격: 0:00

☐ 사용자 정의

예) 1:00,11:00,21:30 (빠른 시간 순서대로 모두 붙여적습니다)

< 뒤로(B) 마침(F) 취소

: [] " 가 -
" " ViewType ActiveX "

[] " "

OZScheduler - 태스크 목록			
아이디	카테고리	아이템 이름	타입
Orders_090206133205734_894725734.ozs	/	Orders.ozr	Periodi...
Orders_090206133239734_894759735.ozs	/	Orders.ozr	Periodi...
parameter_test_09020613330084	추가	parameter_test.ozr	Periodi...
Chart_090206133317640_8947976	수정...(C)	Chart.ozr	Periodi...
Chart_090206133609546_8949699	삭제(D)	Chart.ozr	Periodi...
parameter_test_09020613361825	결과 보기...(V)	parameter_test.ozr	Periodi...
Orders_090206133628218_89496	시작(S)	Orders.ozr	Periodi...
parameter_test_09020613370512	종지(P)	parameter_test.ozr	Periodi...
Chart_090206133717187_8950371		Chart.ozr	Periodi...

[]

OZScheduler - 태스크 목록			
아이디	카테고리	아이템 이름	타입
Orders_090206133205734_894725734_ozs	/	Orders,ozr	Periodi...
Orders_090206133239734_894725734_ozs	/	Orders,ozr	Periodi...
parameter_test_090206133205734_894725734_ozs	/	parameter_test,ozr	Periodi...
Chart_090206133317640_894725734_ozs	/CheckList/	Chart,ozr	Periodi...
Chart_090206133609546_894725734_ozs	/CheckList/	Chart,ozr	Periodi...
parameter_test_090206133205734_894725734_ozs	/	parameter_test,ozr	Periodi...
Orders_090206133628218_894725734_ozs	/	Orders,ozr	Periodi...
parameter_test_090206133205734_894725734_ozs	/	parameter_test,ozr	Periodi...
Chart_090206133717187_894725734_ozs	/CheckList/	Chart,ozr	Periodi...

[]

OZScheduler - 태스크 목록			
아이디	카테고리	아이템 이름	타입
Orders_090206133205734_894725734_ozs	/	Orders,ozr	Periodi...
parameter_test_090206133205734_894725734_ozs	/	parameter_test,ozr	Periodi...
parameter_test_090206133205734_894725734_ozs	/	parameter_test,ozr	Periodi...
Orders_090206133628218_894725734_ozs	/	Orders,ozr	Periodi...
Orders_090206133239734_894725734_ozs	/	Orders,ozr	Periodi...
Chart_090206133609546_894725734_ozs	/CheckList/	Chart,ozr	Periodi...
Chart_090206133717187_894725734_ozs	/CheckList/	Chart,ozr	Periodi...
Chart_090206133317640_894725734_ozs	/CheckList/	Chart,ozr	Periodi...
parameter_test_090206133705125_895025132_ozs	/	parameter_test,ozr	Periodi...

[]

가

OZScheduler - Orders_090206133205734_894725734_ozs 태스크 결과						
아이디	완료시간	성공여부	아이템 이름	패러미터	타입	에러메세지
Orders_090...	2009-02-06 13:...	Succeeded	Orders,ozr		Periodi...	
Orders_090...	2009-02-06 13:...	Succeeded	Orders,ozr		Periodi...	
Orders_090...	2009-02-06 13:...	Succeeded	Orders,ozr		Periodi...	

[]

OZScheduler - 마스크 목록				
아이디	카테고리	아이템 이름	타입	
Orders_090206133205734_894725734_ozs	/	Orders,ozr	Periodi...	
parameter_test_09020613331764		parameter_test,ozr	Periodi...	
Chart_09020613331764	/CheckList/	Chart,ozr	Periodi...	
Chart_09020613360954	/CheckList/	Chart,ozr	Periodi...	
parameter_test_0902061336282		parameter_test,ozr	Periodi...	
Orders_0902061336282		Orders,ozr	Periodi...	
parameter_test_09020613371718		parameter_test,ozr	Periodi...	
Chart_09020613371718	/CheckList/	Chart,ozr	Periodi...	
Orders_090206133239734_894759735_ozs	/	Orders,ozr	Periodi...	

[]

OZScheduler - 마스크 목록				
아이디	카테고리	아이템 이름	타입	
Orders_090206133239734_894759735_ozs	/	Orders,ozr	Periodi...	
parameter_test_09020613331764	/	parameter_test,ozr	Periodi...	
Chart_09020613331764	/CheckList/	Chart,ozr	Periodi...	
Chart_09020613360954	/CheckList/	Chart,ozr	Periodi...	
parameter_test_0902061336282	/	parameter_test,ozr	Periodi...	
Orders_0902061336282	/	Orders,ozr	Periodi...	
parameter_test_09020613371718	/	parameter_test,ozr	Periodi...	
Chart_09020613371718	/CheckList/	Chart,ozr	Periodi...	
Orders_090206133205734_894725734_ozs	/	Orders,ozr	Periodi...	

스케줄링 마스크 결과

☐ 날짜 입력

시작
2009-01-30

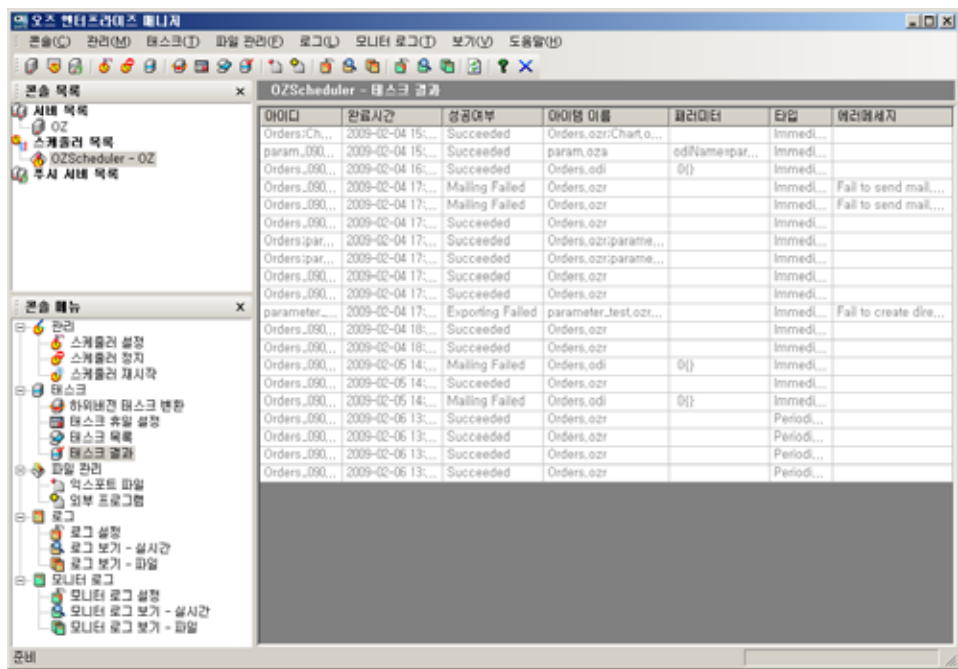
종료
2009-02-06

태스크 아이디

확인
취소

[]

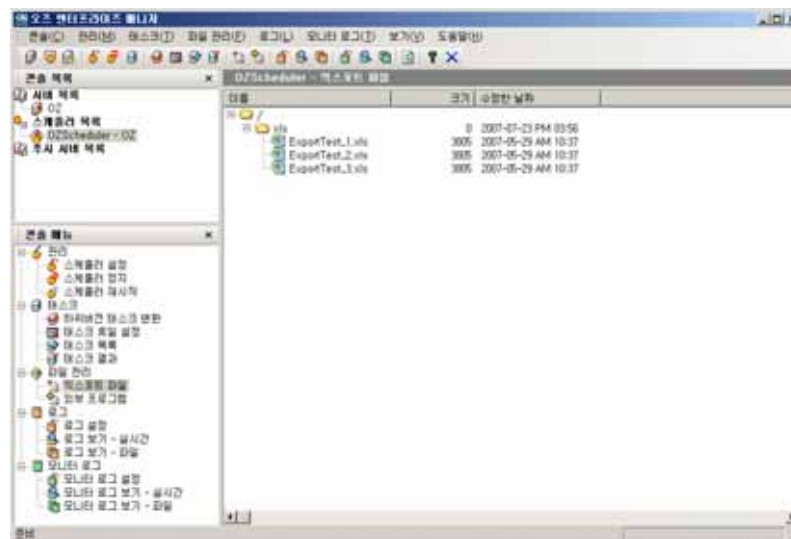
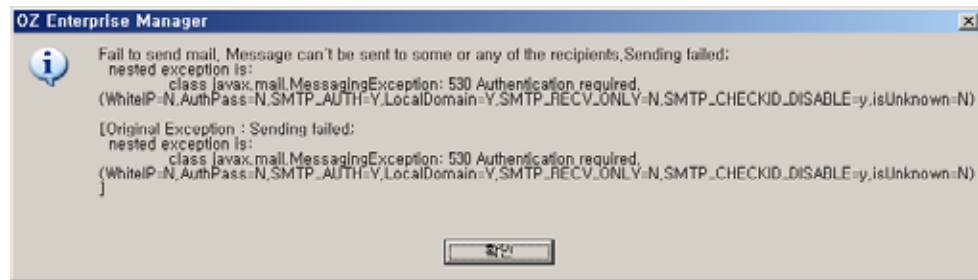
[]



가

[]

OZScheduler - 태스크 결과						
아이디	완료시간	성공여부	아이템 이름	패러...	타.	에러메세지
Orders:Chart:parameter_test_0902041...	2009-02-04 ...	Succeeded	Orders,ozr:Char...		I...	
param_090204154252687_729772688,ozs	2009-02-04 ...	Succeeded	param,oza	odiNa...	I...	
Orders_090204160955859_731395859,ozs	2009-02-04 ...	Succeeded	Orders,odi	0{}	I...	
Orders_090204170040796_731416383	2009-02-04 ...	Mailing Fail...	Orders,ozr		I...	Fail to send m...
Orders_09020417054062	2009-02-04 ...	Mailing Fail...	Orders,ozr		I...	Fail to send m...



[]

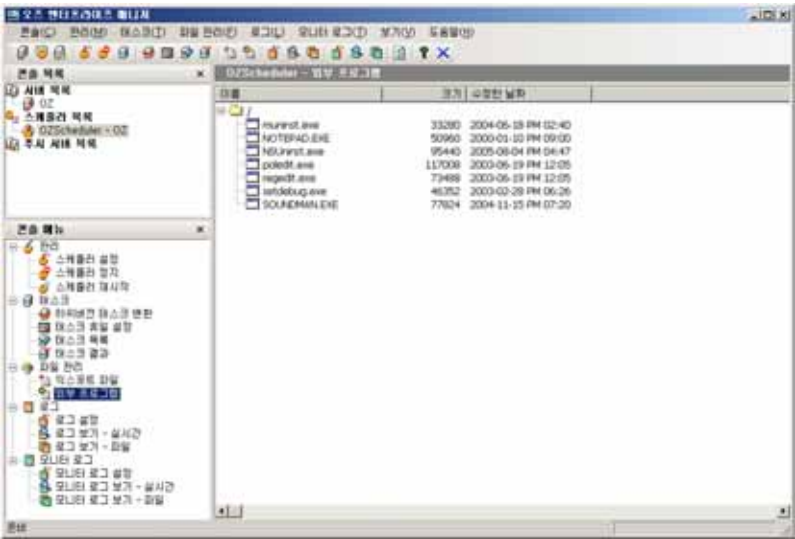
[]

[]

().

[]

■



[]

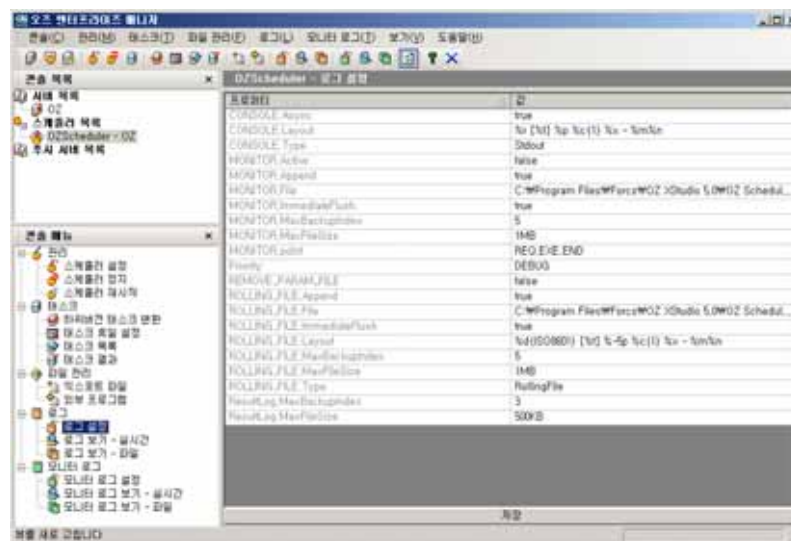
[]

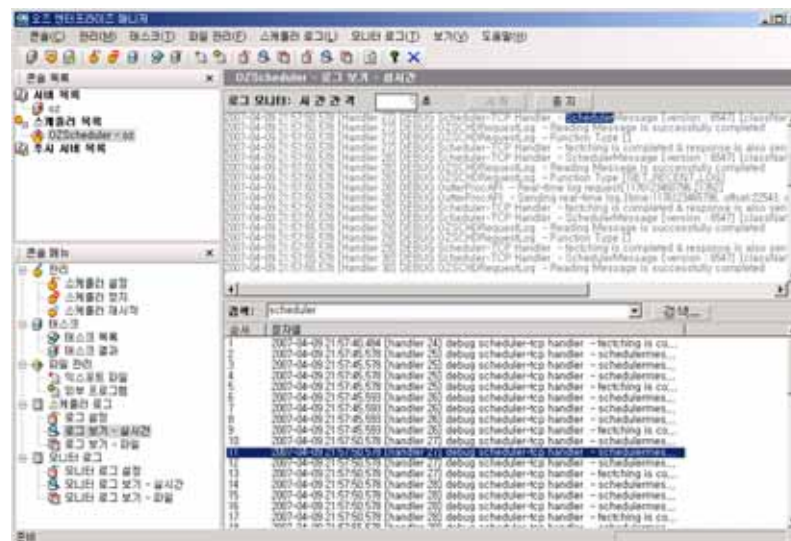
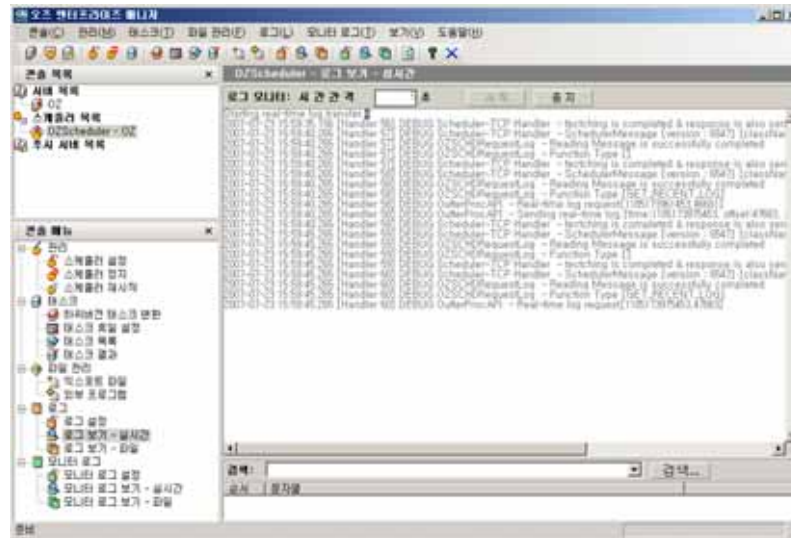
[]

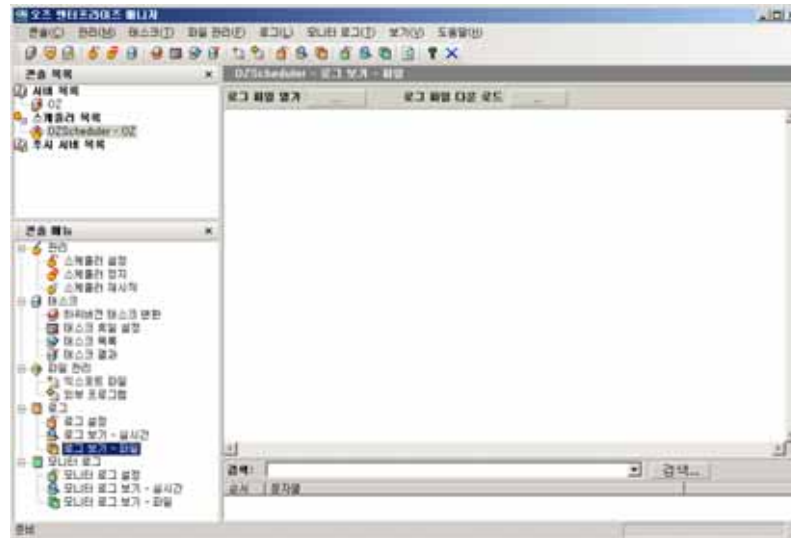
().

" "

[]

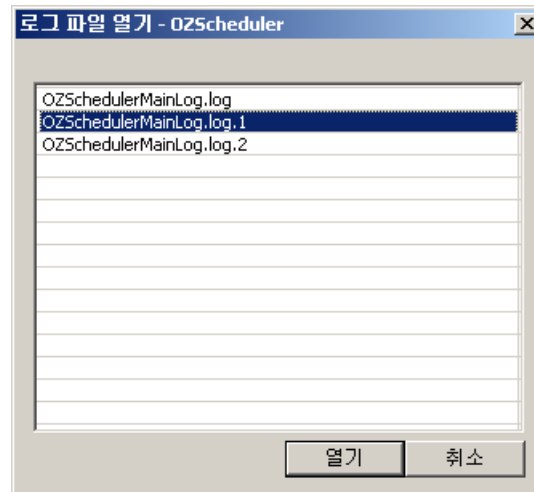




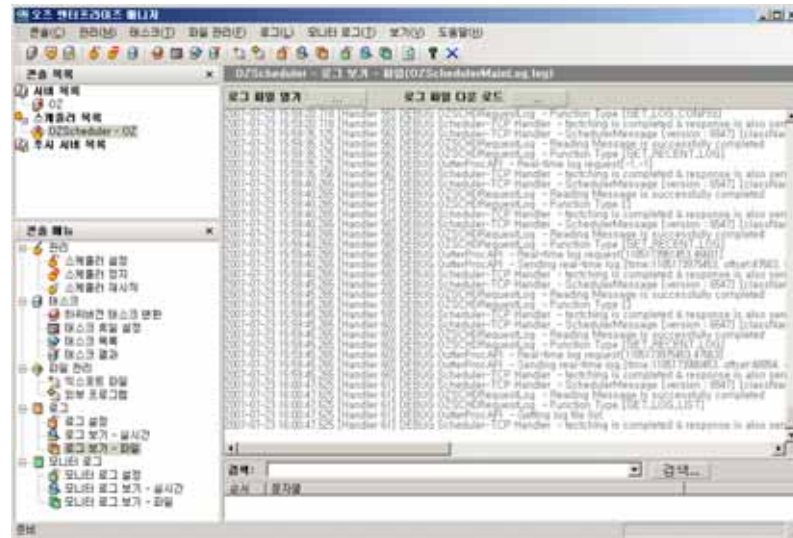


[...]

가

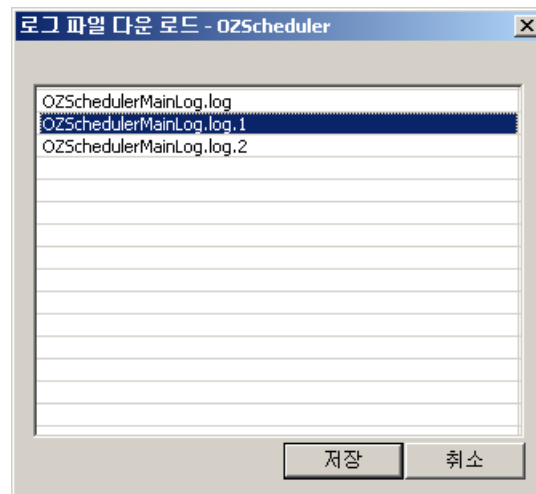


[]



[...]

가

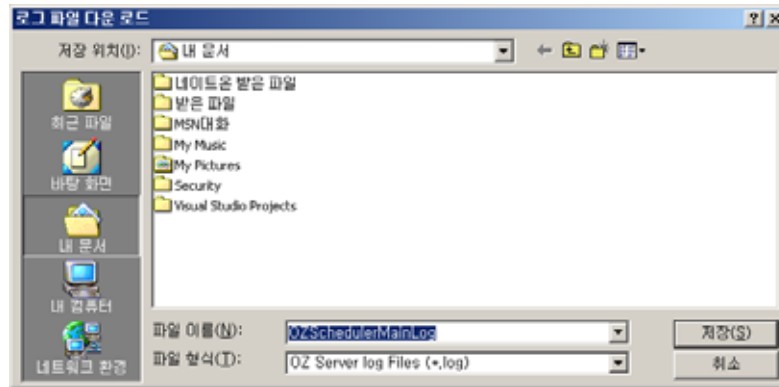


<Shift>

<Ctrl>

[]

가



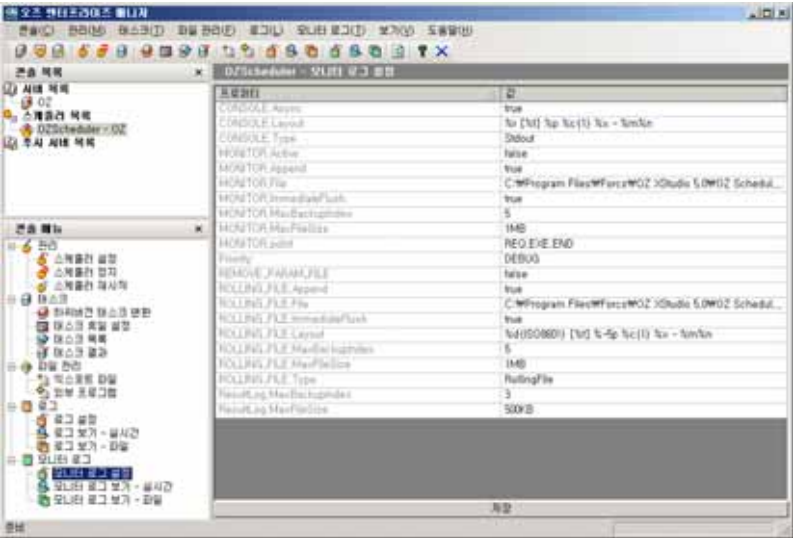
[]

1)
 "OZSchedulerMainLog.log", "OZSchedulerMainLog.log.1",
 "OZSchedulerMainLog.log.2" test []
 "test.log", "test.log.1", "test.log.2"

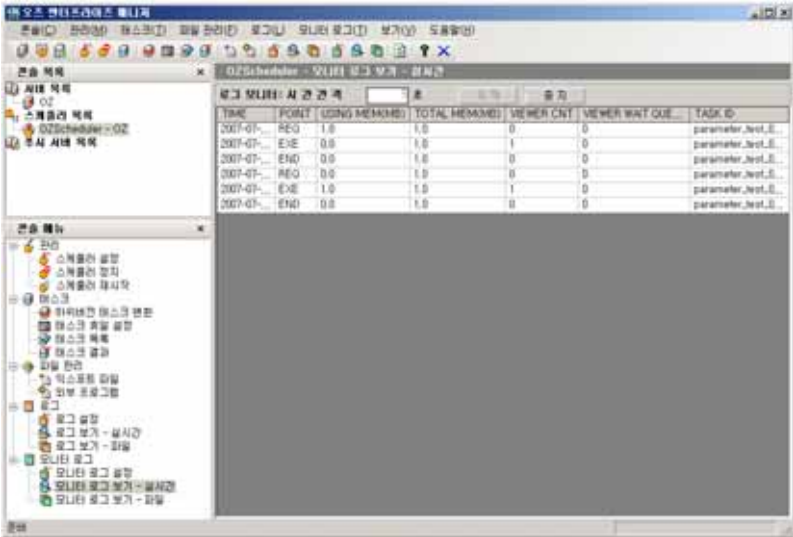
2)
 "OZSchedulerMainLog.log", "OZSchedulerMainLog.log.1",
 "OZSchedulerMainLog.log.2" []
 " OZSchedulerMainLog.log", "
 OZSchedulerMainLog.log.1", " OZSchedulerMainLog.log.2"

■

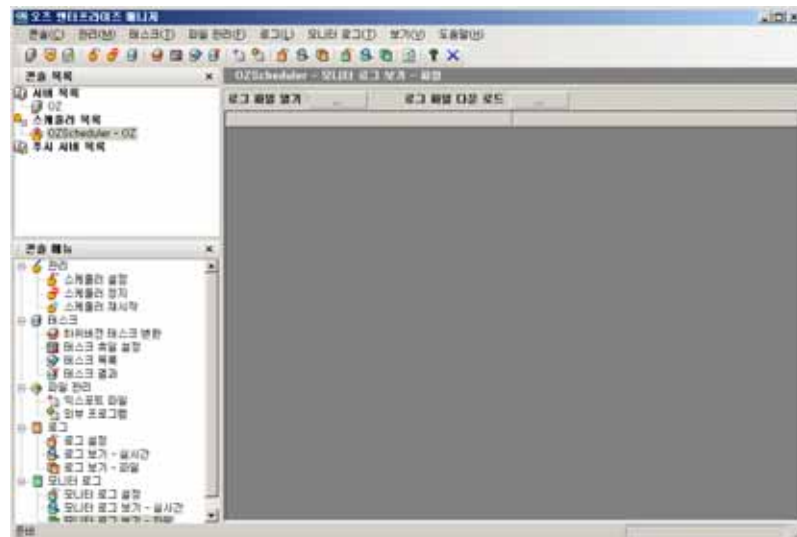
[]



"log.properties"

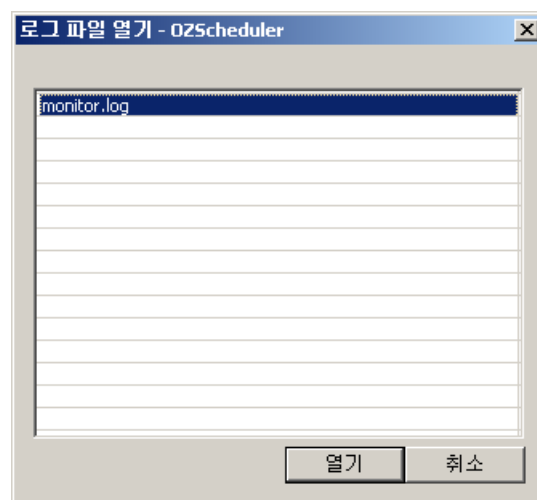


()

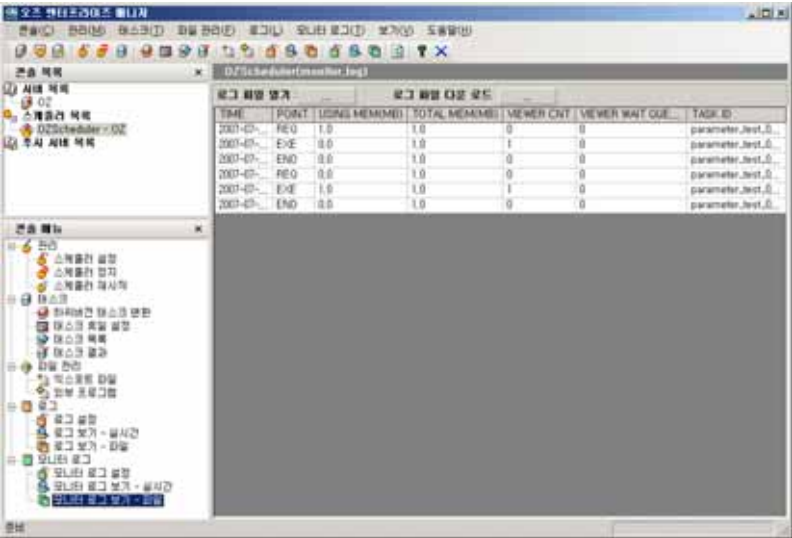


[...]

가

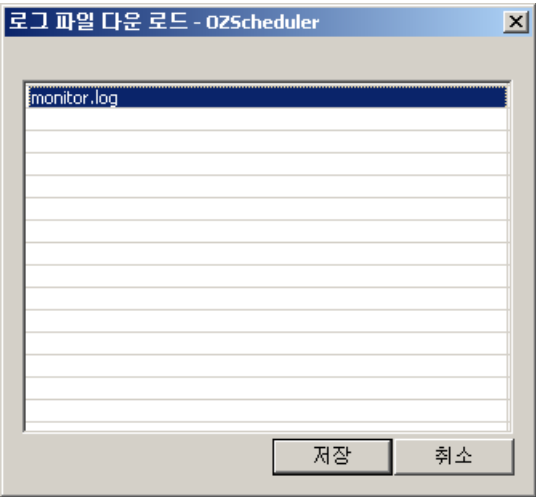


[]



[...]

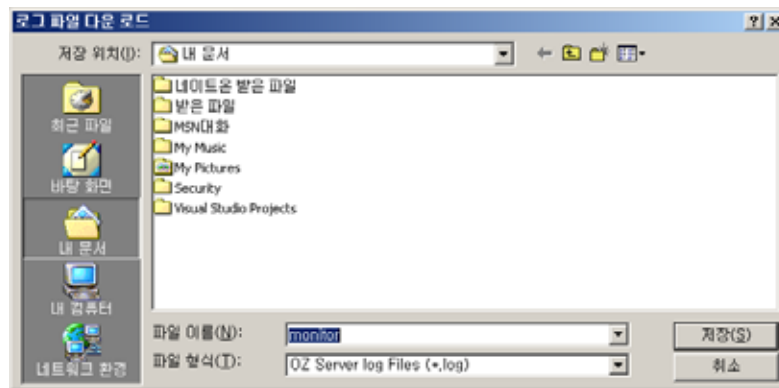
가



<Shift> <Ctrl>

[]

가



[]

- 1)

"monitor.log", "monitor.log.1", "monitor.log.2"

[]

"test.log.2"

test

"test.log", "test.log.1",
- 2)

"monitor.log", "monitor.log.1", "monitor.log.2"

[]

"monitor.log.1", "monitor.log.2"

"monitor.log",

가

- 가
가 [] - [가]
가 ()
[가]
가

새 푸시 서버

이름

IP

127.0.0.1

포트

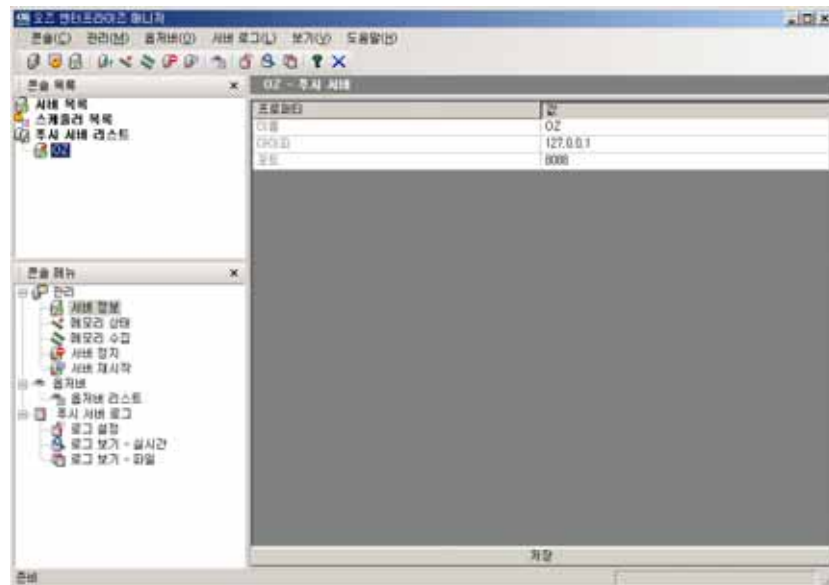
8088

추가

취소

IP	가 IP
	가 (: 8088)

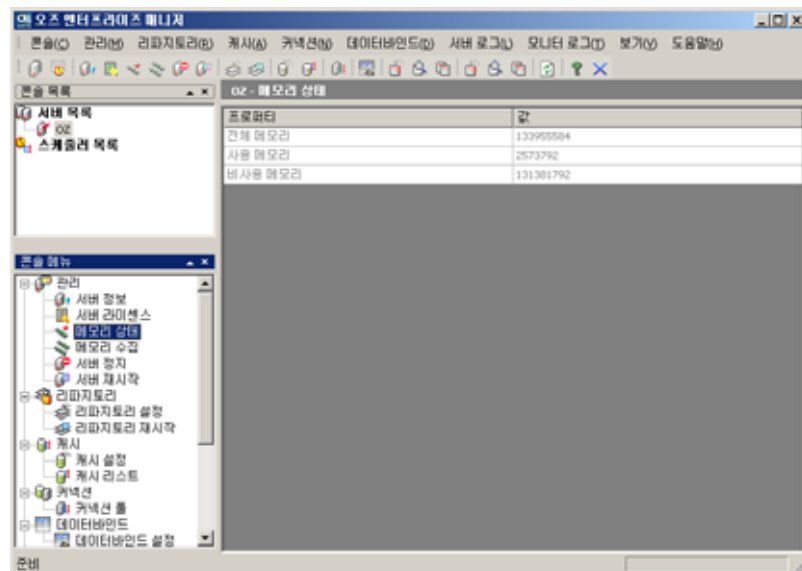
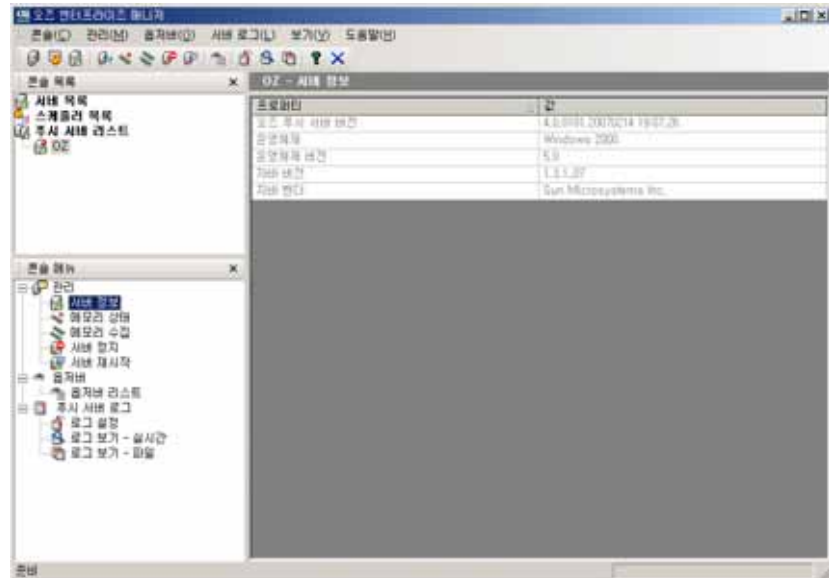
- " " [가] [] [] 가 가



[] " "가
" " " " []

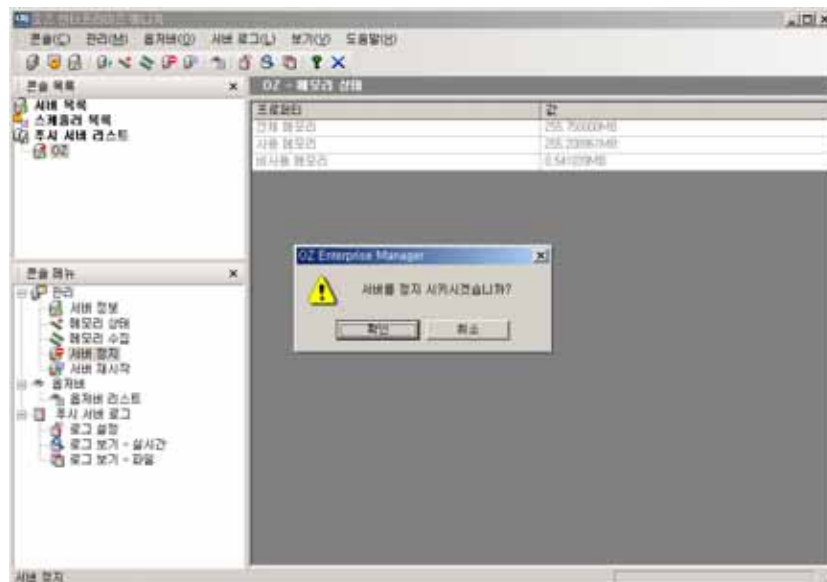
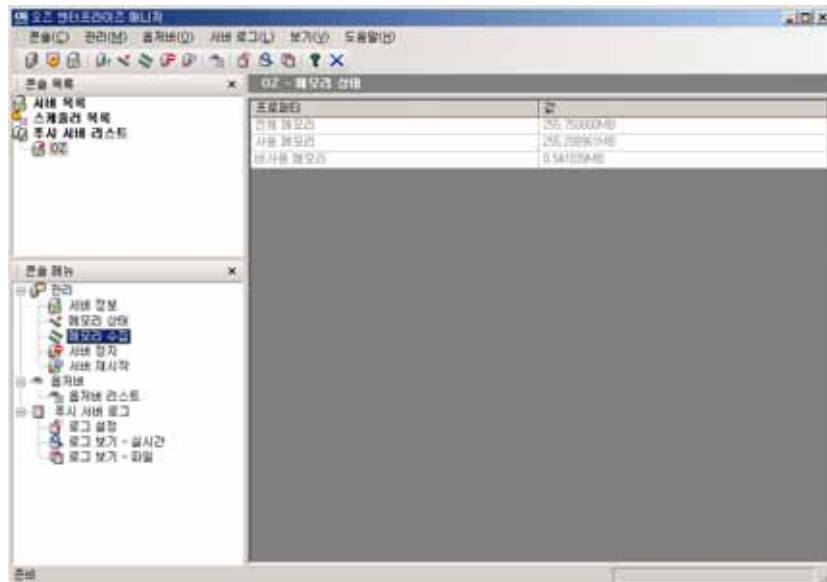
" " 가 "

"가 .

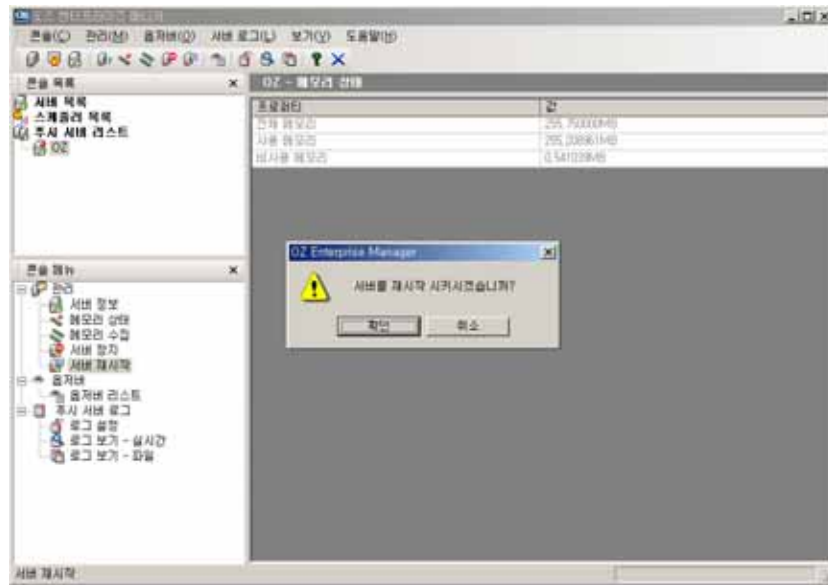


: 가

가 . JVM
가



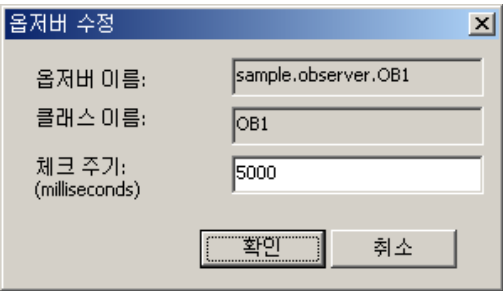
가



■

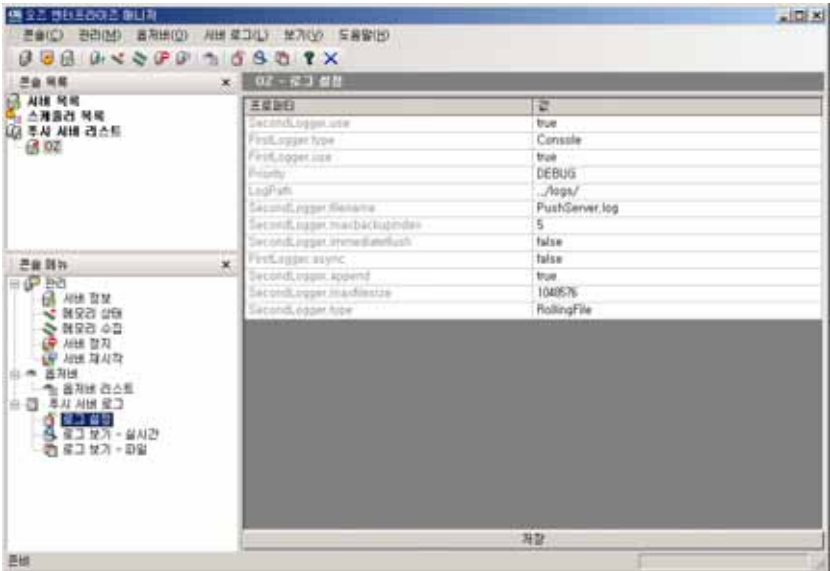
"pushserver.xml"

ID

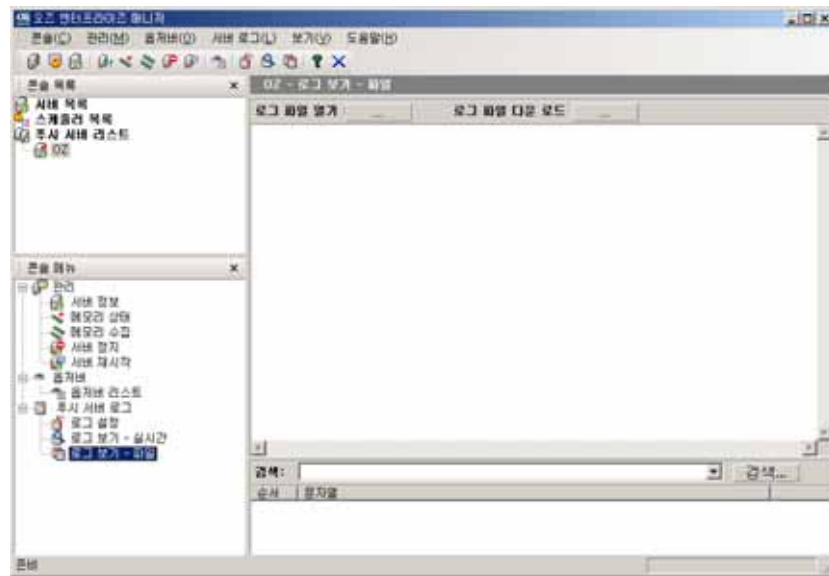


[]

[]

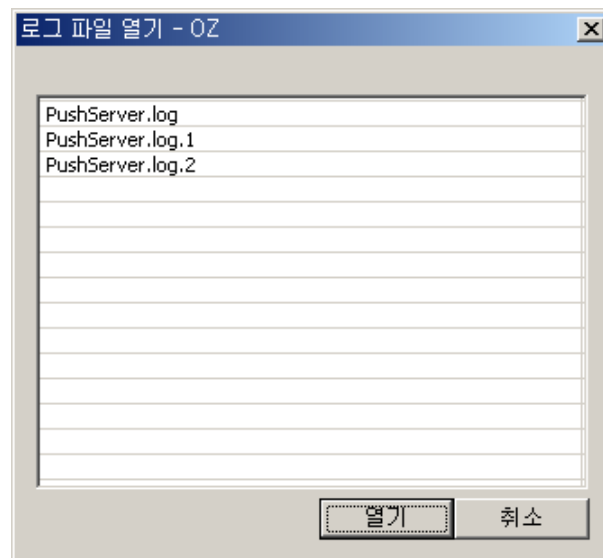




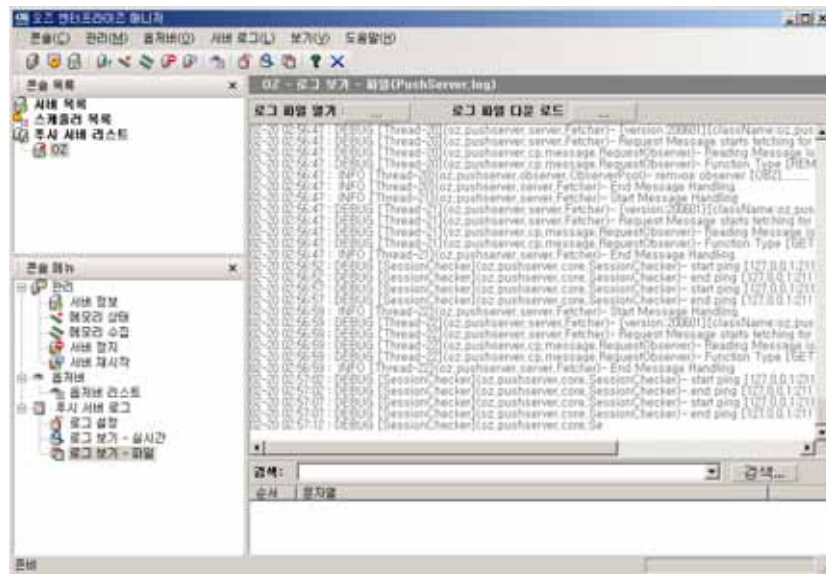


[...]

가

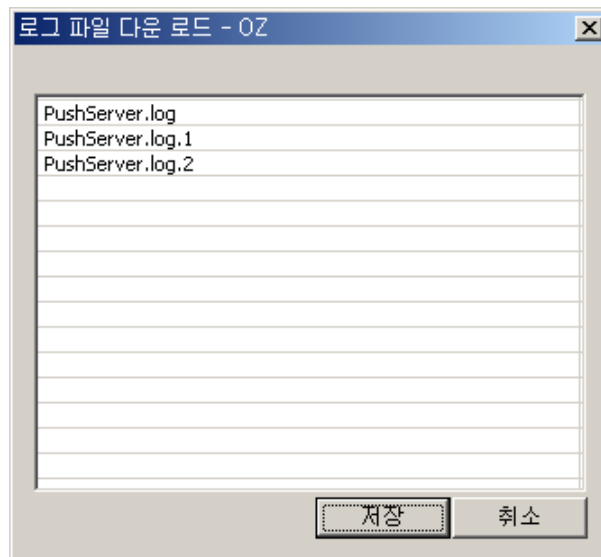


[]



[...]

가

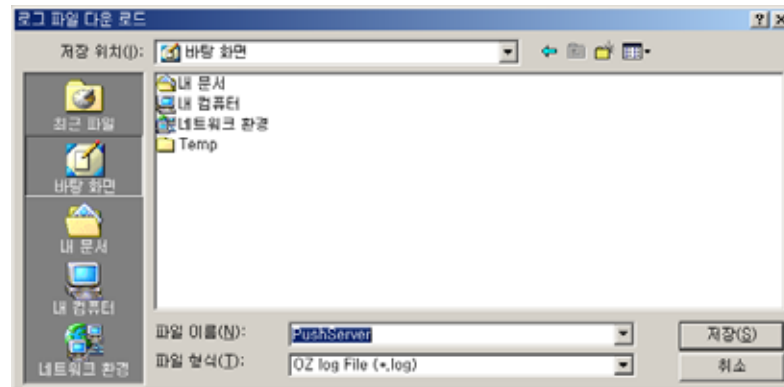


<Shift>

<Ctrl>

[]

가



[]