

•	3
.....	4
.....	4
.....	5
•	7
.....	8
.....	8
.....	11
•	13
.....	14
.....	15
.....	20
.....	22
•	23
assembly.properties	24
cachemngr.properties	27
clientlist.xml	30
databind.properties	33
db.properties	34
dbconfig.xml, dbconfig.xsd	38
log.properties	52
monitor.properties	57

ozserver.properties 64

ozservice.properties 66

repository.properties 67

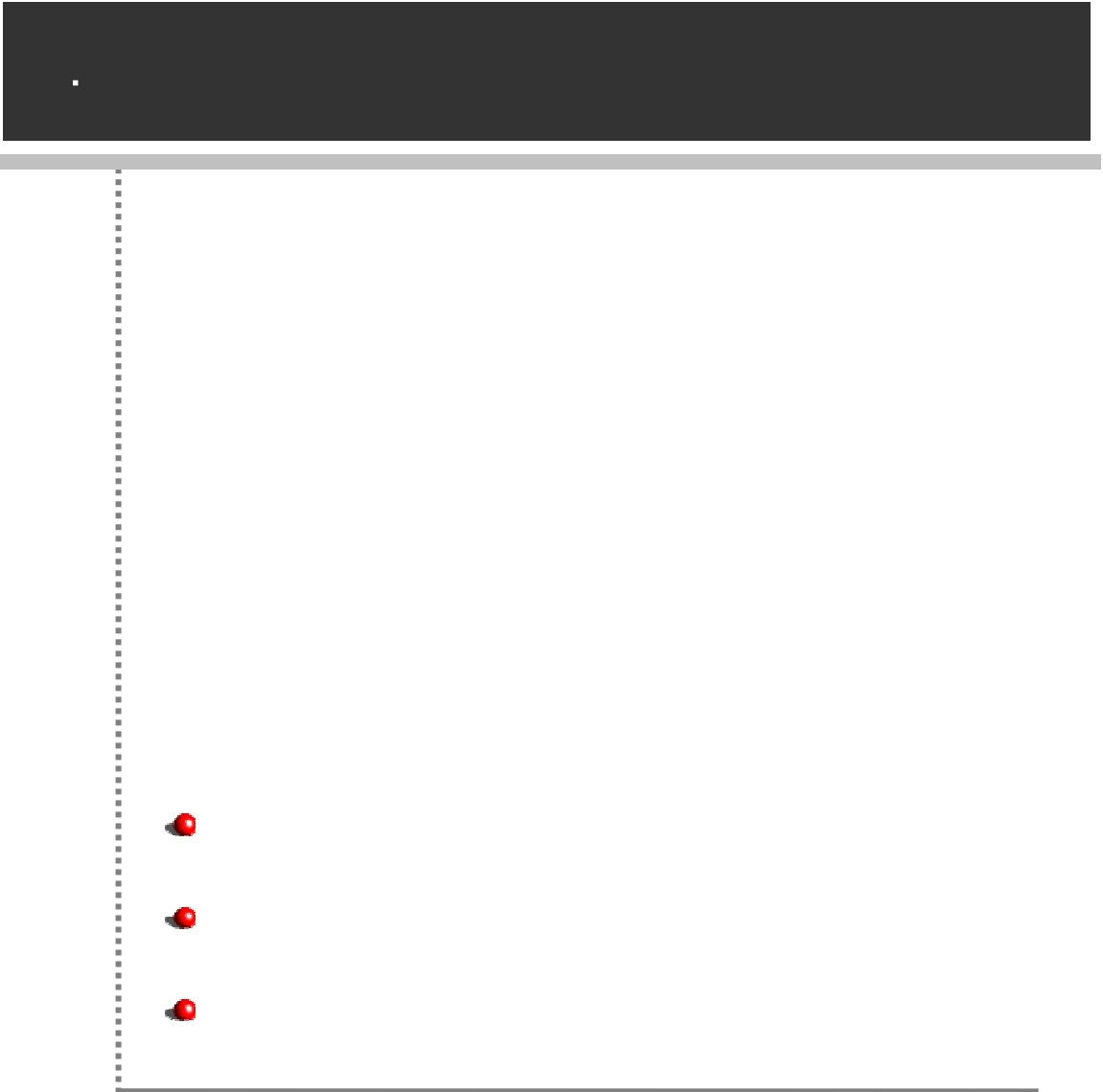
sap.properties 70

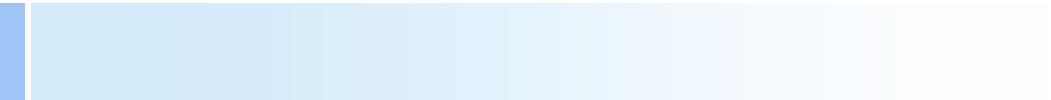
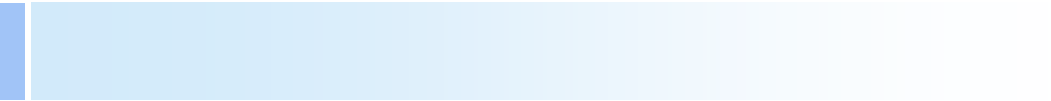
spmgr.properties 72

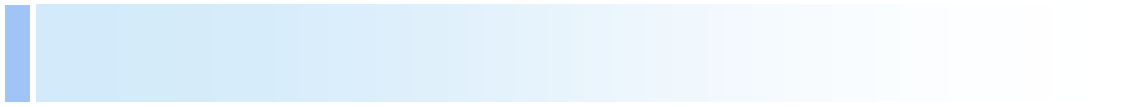
srmngr.properties 75

uslmngr.properties 76

. 77

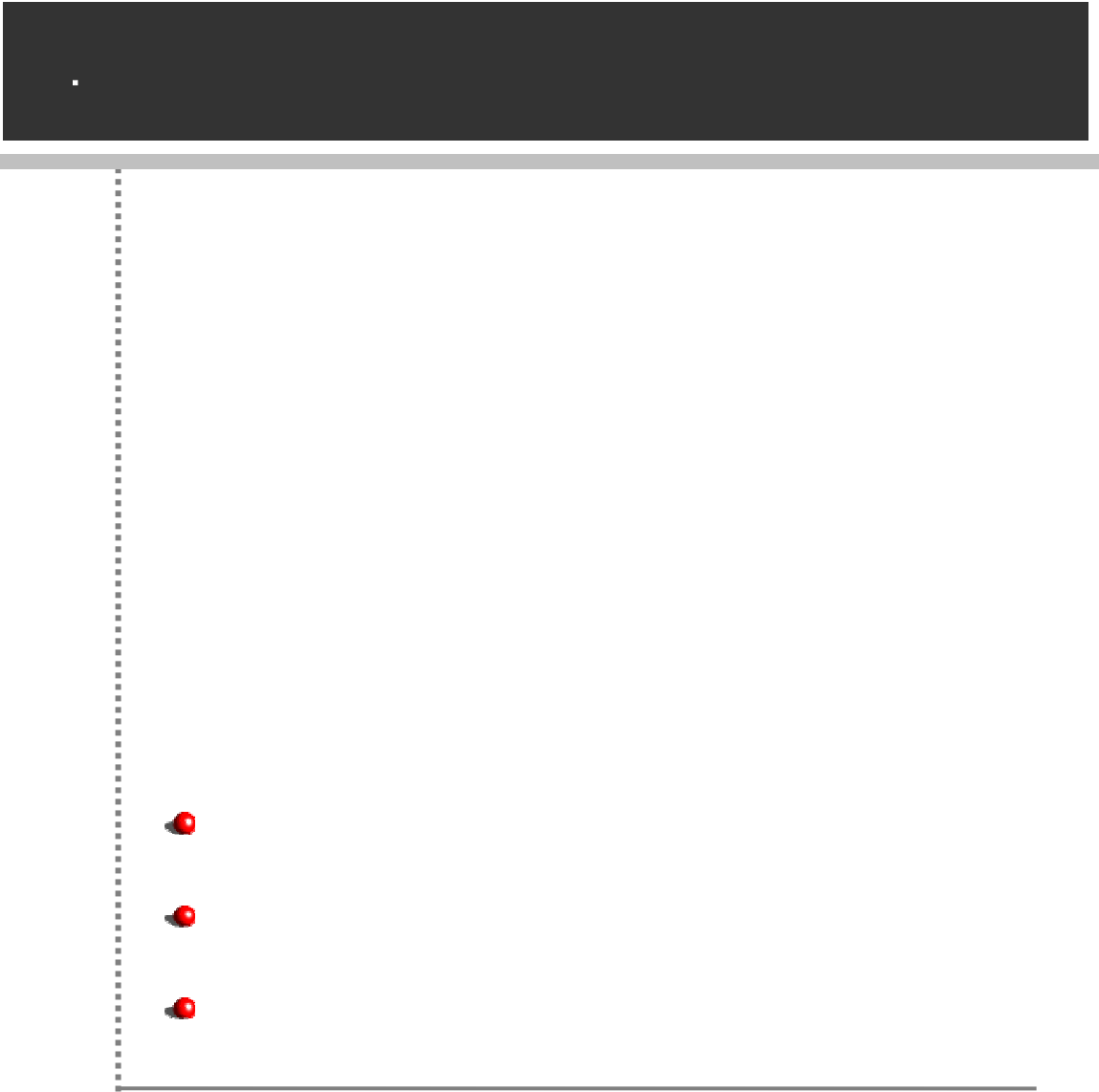






가

Getting Started	
가	
가	
Getting Started	
API	API



,
 ,
 ,
 DB Pooling, , , /

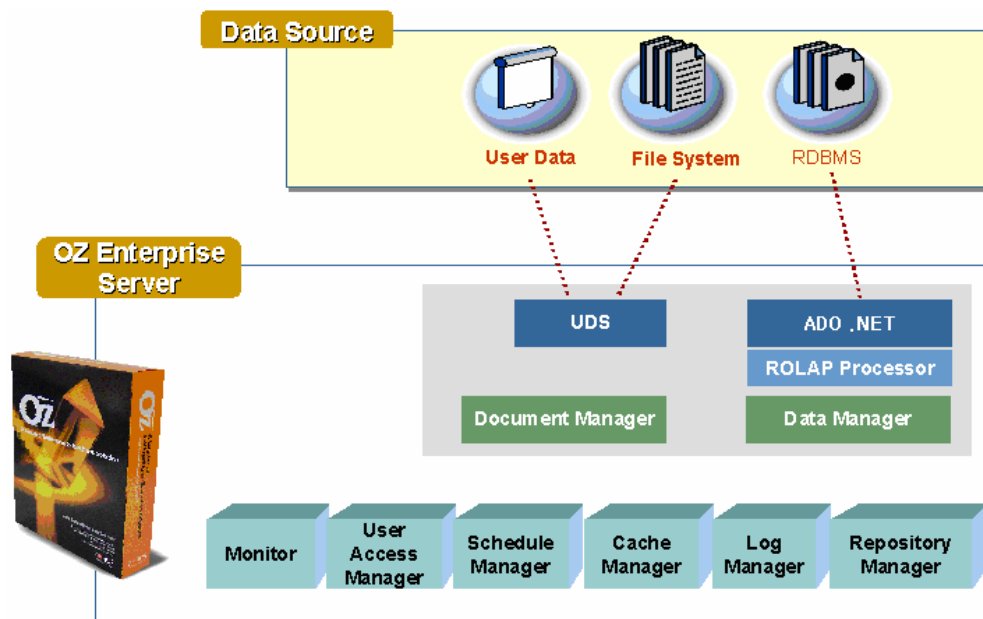
가
 (Concurrent Mode) ,

CGI , Non-DB
 UDS(User Data Store) .
 : UDS(User Data Store)
 ADO.NET Non-DB
 UDS(User Data Store) . UDS
 XML, ASP, Legacy Data

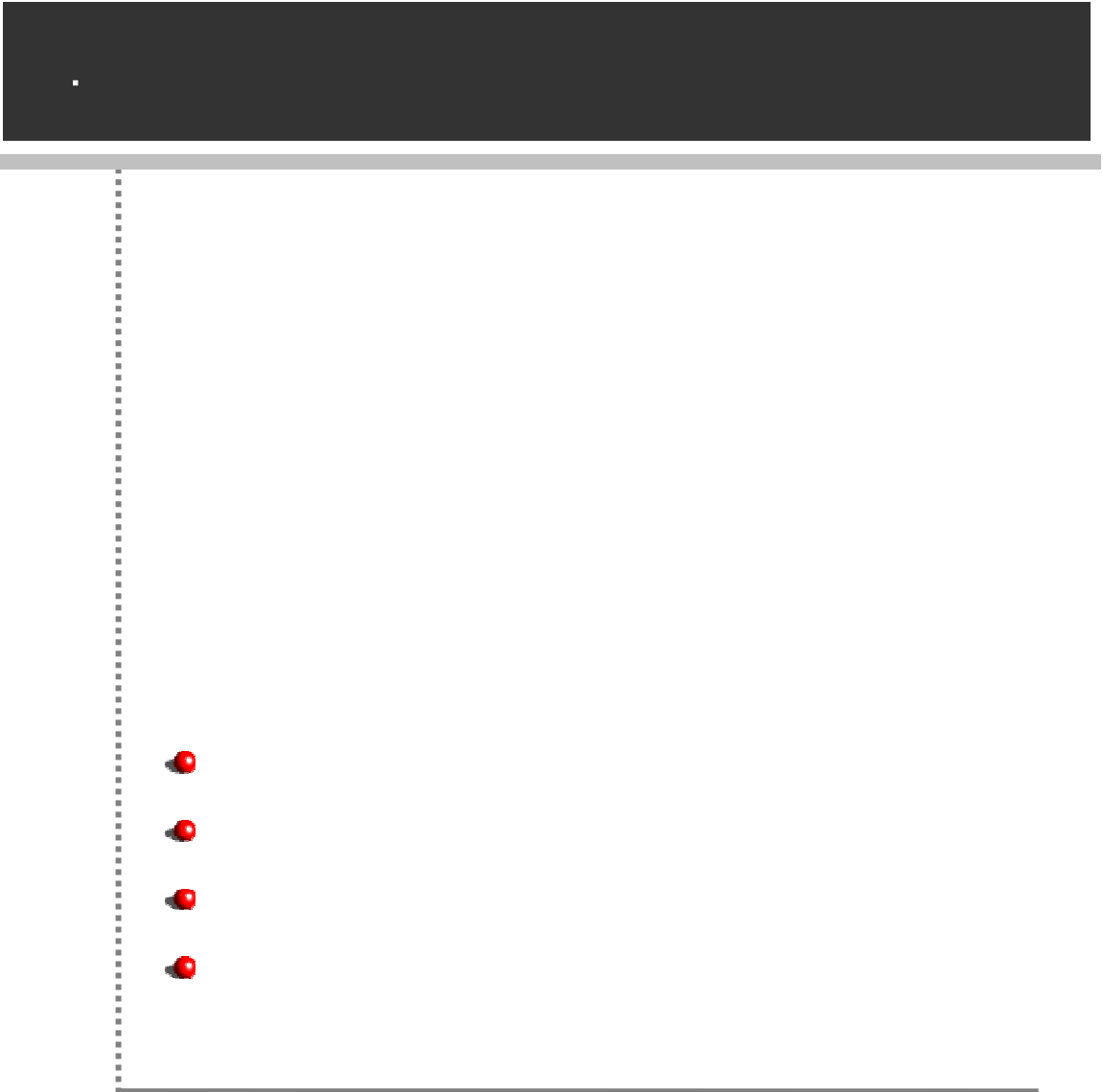


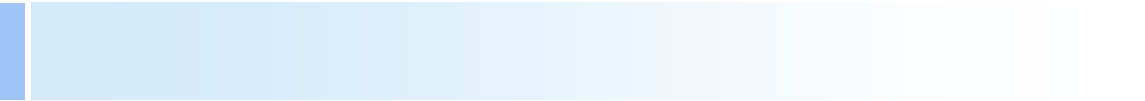
가

가



UDS	UDS	Non-database Source
ADO .NET	ADO .NET	
Document Manager		
Data Manager		
Monitor		
User Access Manager	/	
Schedule Manager	가	
Cache Manager		
Log Manager		
Repository Manager		





.NET Framework 1.1

(Microsoft Windows® Server 2003 , Microsoft Windows 2000, Microsoft Windows XP Professional)

DBMS

Oracle, Informix, Sybase, MS-SQL Server, DB2 ADO .NET DBMS

: RDB

- DB2 : DB2 Runtime Client .
- Informix : Informix Client SDK가 .
- ODBC : IIS DSN .
- Oracle : Oracle Client SDK가 .
- Sybase : Sybase Client SDK가 .
- User defined : DLL UniversalDriver 가 .

Microsoft .NET Framework 1.1
Microsoft Internet Information Server (IIS) 5.1
ASP.NET

```

( ) ozlicense.xml
License
가
가

```

ozserver.properties

```
{ } \ozserver.properties path.oz.server.home
```

```
C:\Program Files\Forcs\OZ XStudio\OZ Server.NET 4.0
```

```

#-----
# Main configuration of ozserver
#-----

path.oz.server.home=C:\Program Files\Forcs\OZ XStudio\OZ Server.NET 4.0

path.license.file=%OZ_HOME%\license\ozlicense.xml
path.log.properties.file=%OZ_HOME%\conf\log.properties
path.securitypolicy.properties.file=%OZ_HOME%\conf\spmgr.properties
path.connpool.properties.file=%OZ_HOME%\conf\db.properties
path.cache.properties.file=%OZ_HOME%\conf\cachemngr.properties
path.monitor.properties.file=%OZ_HOME%\conf\monitor.properties
path.repository.properties.file=%OZ_HOME%\conf\repository.properties
path.usl.properties.file=%OZ_HOME%\conf\uslmngr.properties
path.schedule.properties.file=%OZ_HOME%\conf\srmngr.properties
path.sapclient.properties.file=%OZ_HOME%\conf\sap.properties
path.databind.properties.file=%OZ_HOME%\conf\databind.properties
path.assembly.properties.file=%OZ_HOME%\conf\assembly.properties
path.ozservice.properties.file=%OZ_HOME%\conf\ozservice.properties
path.ozdbconfig.properties.file=%OZ_HOME%\conf\dbconfig.xml

```

■ ASP.NET

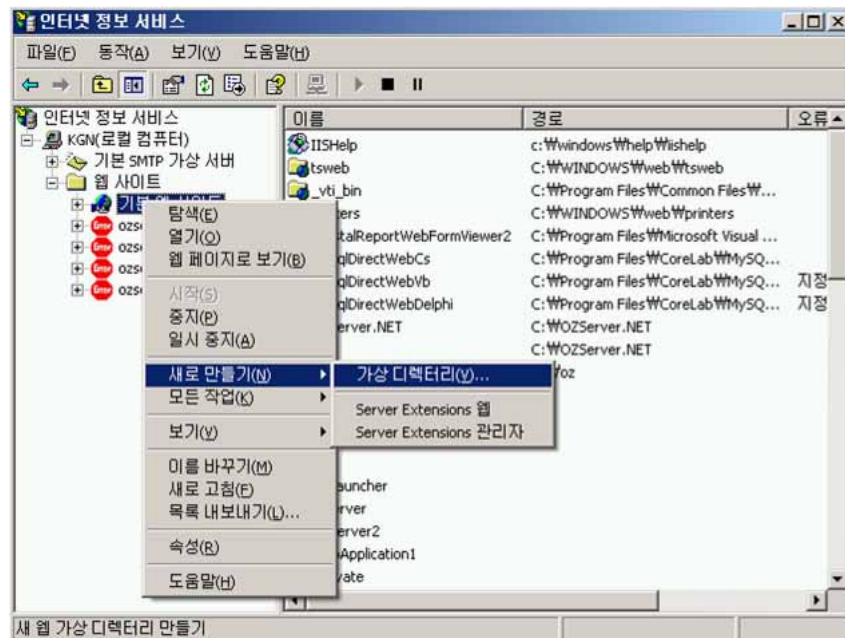
ASP.NET IIS ASP.NET .NET Framework

```
C:\WINNT\Microsoft.NET\Framework\v1.1.4322>aspnet_regiis.exe -i
Start installing ASP.NET <1.1.4322.0>.
Finished installing ASP.NET <1.1.4322.0>.
```

- 가 가
%OZ_HOME% 가
가



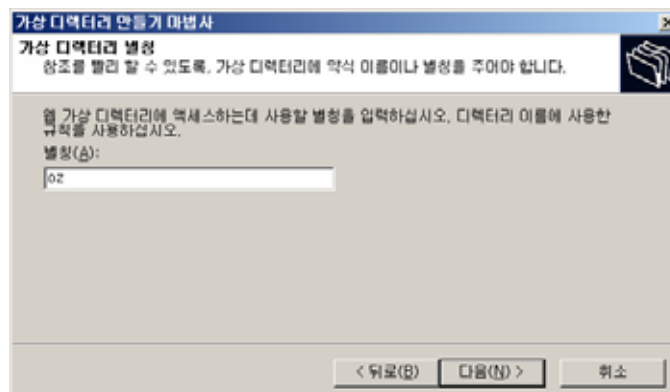
[] [가]



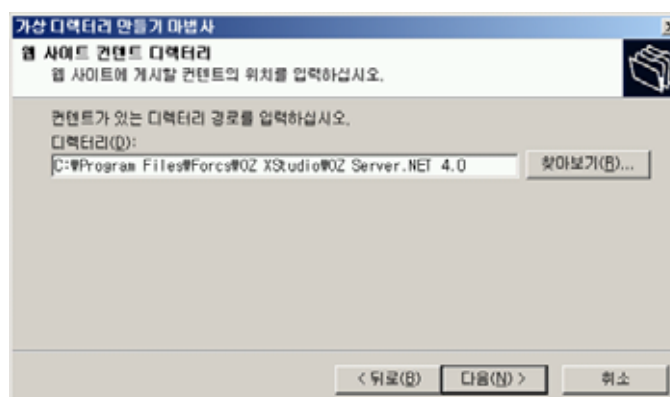
- "가" "가" []



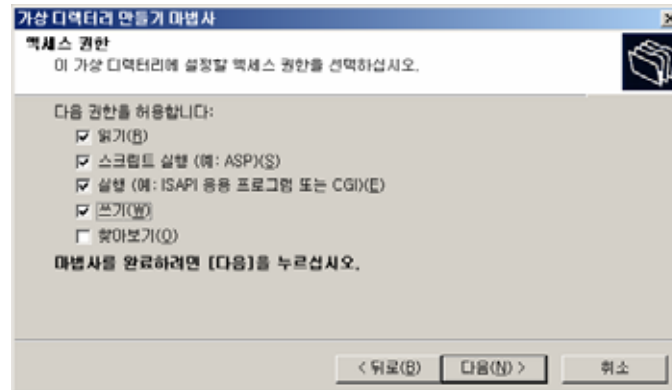
- 가상 디렉터리 이름 " " [] . ("OZ" .)



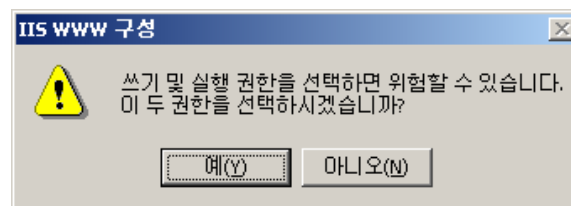
- 가상 디렉터리 경로 [] . ("C:\Program Files\ForcS\OZ XStudio\OZ Server.NET 4.0" .)



➤ [] . (, , ,
가 .)



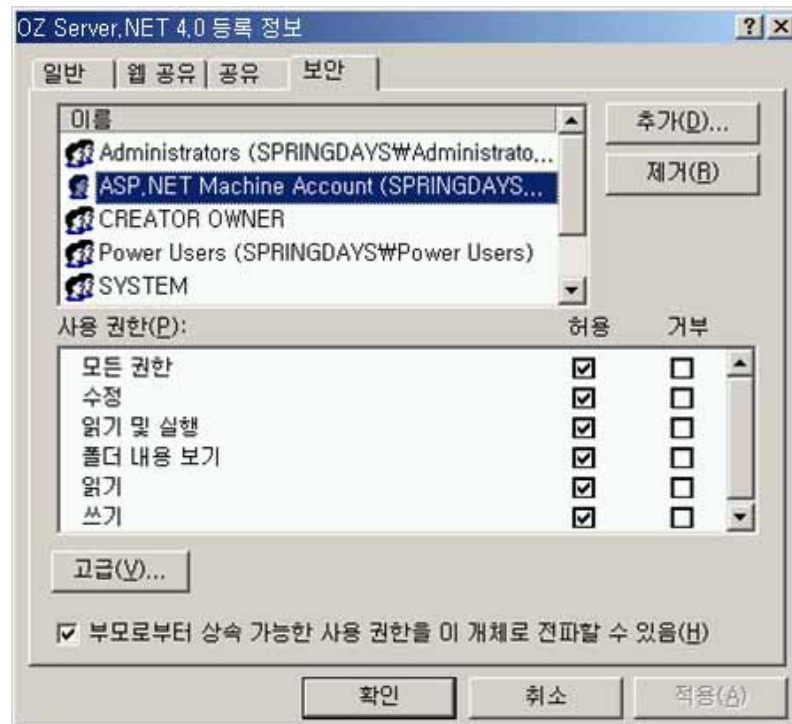
가 [] .




[]
.



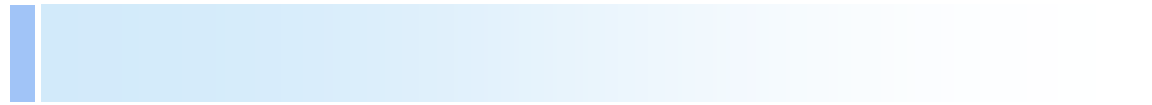
■ 가 가 [ASP.NET]



: ASP.NET

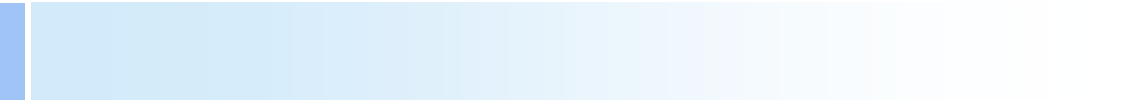
ASP.NET

가

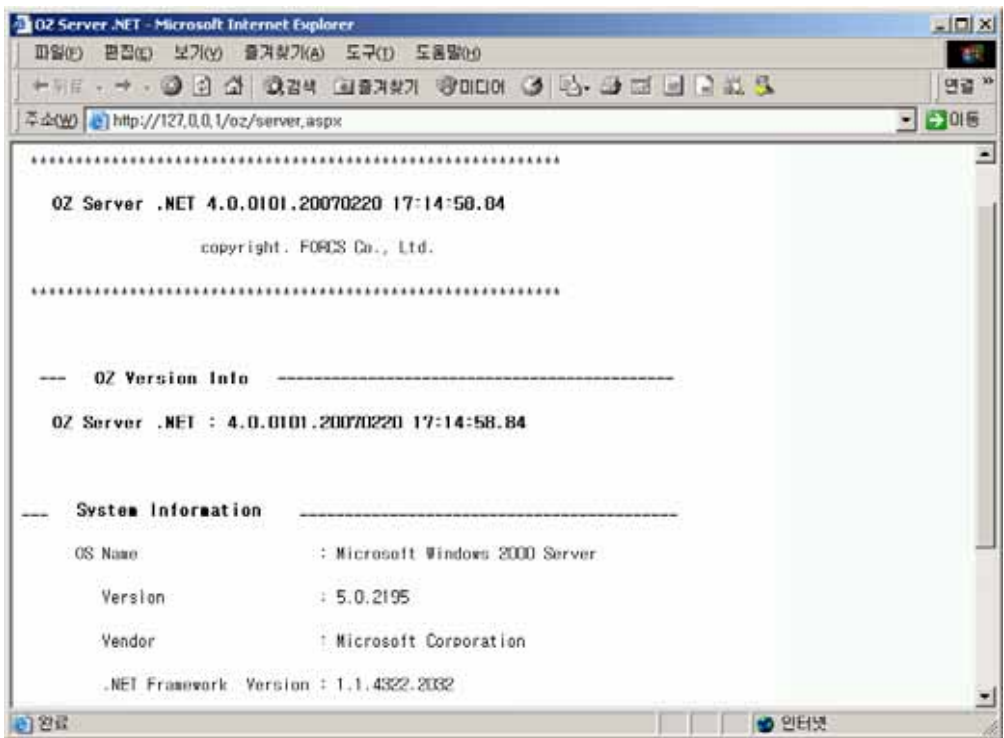


{OZ_HOME}	Global.asax	()
	ozserver.properties	
	Server.aspx	
	Web.config	가
bin	OZDatabaseHandler.dll	
	OZServer.NET.dll	
	SAP.Connector.dll	SAP
	user.cif	None ()
cache	가	
cache_dm		
conf	assembly. properties	
	cachemngr.properties	
	databind.properties	
	db.properties	DB
	dbconfig.xml	DBMS ADO .NET
	dbconfig.xsd	
	log.properties	
	monitor.properties	Monitor

	ozservice.properties	
	repository.properties	
	sap.properties	SAP
	spmgr.properties	
	srmngr.properties	
	uslmngr.properties	(, PKI)
license	ozlicense.xml	
logs	monitor.log	Monitor
	server.log	
scheduled_data		



IIS가




URL

http:// /가 / aspx

가 "oz" aspx "server.aspx"

URL "http://127.0.0.1/oz/server.aspx"가 .

- 
-
- assembly.properties
 - cachemngr.properties
 - clientlist.xml
 - databind.properties
 - db.properties
 - dbconfig.xml, dbconfig.xsd
 - log.properties
 - monitor.properties
 - ozserver.properties
 - ozservice.properties
 - repository.properties
 - sap.properties
 - spmgr.properties
 - srmngr.properties
 - uslmngr.properties
-

assembly.properties

{OZ_HOME}\conf\assembly.properties

PC
가

assembly.properties

```
###
###   Configurai on of Assembly
###

home=

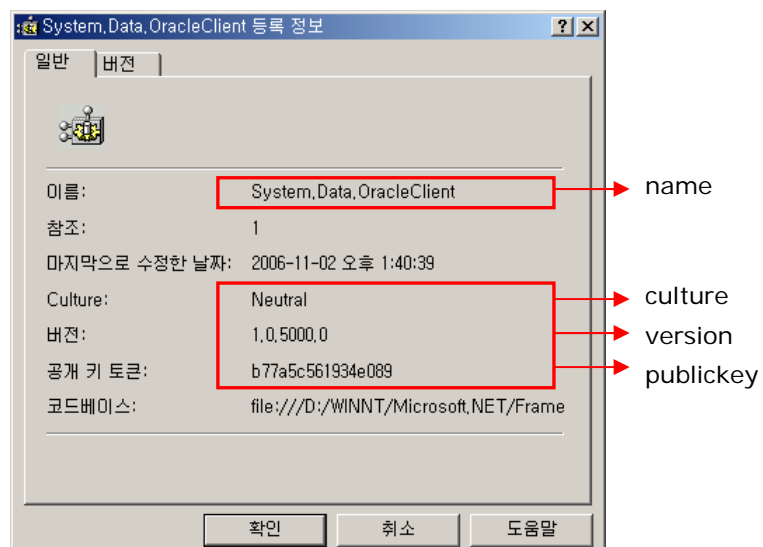
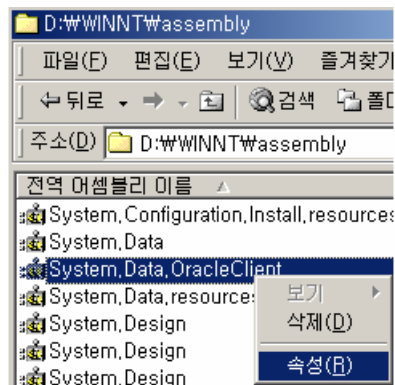
#al i as. fi lepath=
#al i as. name=
#al i as. versi on=
#al i as. cul tuer=
#al i as. publ i ckey=
```

■ assembly.properties

home	(EM)

filepath	: filepath publickey name, version, culture, filepath
name	
version	
culture	
publickey	

: assembly.properties



DBMS assembly.properties

■ MS-SQL

```
#
#MSSQL_ADO.NET_Provider
#
mssql_DB.name=System.Data
mssql_DB.version=1.0.50000.0
mssql_DB.culture=Neutral
mssql_DB.publickey=b77a5c561934e089
```

: db.properties DB

Ex) mssql_example.assembly= mssql_DB

■ Oracle

```
#
#Microsoft Oracle ADO.NET Provider
#
oracle_DB.name= System.Data.OracleClient
oracle_DB.version=1.0.5000.0
oracle_DB.culture=Neutral
oracle_DB.publickey=b77a5c561934e089
```

: db.properties DB

Ex) oracle_example.assembly=oracle_DB

■ UDS

```
uds1.filepath=%OZ_HOME%/assembly/UDSSample.dll
```

cachemngr.properties

{OZ_HOME}\conf\cachemngr.properties

가

cachemngr.properties

```
###
###   Configurai on of Cache Manager
###

CACHE_FILE_PATH = %OZ_HOME%/cache/
CACHE_DM_FILE_PATH = %OZ_HOME%/dm_cache/

repository.active=false
repository.memoryCacheVal idTime=1200
repository.diskCacheVal idTime=0
repository.freeMemoryPercentage=0

datamodule.report.active=false
datamodule.report.memoryCacheVal idTime=1200
datamodule.report.diskCacheVal idTime=0
datamodule.report.freeMemoryPercentage=0

datamodule.application.active=false
datamodule.application.memoryCacheVal idTime=1200
datamodule.application.diskCacheVal idTime=0
datamodule.application.freeMemoryPercentage=0
```

■ cachemngr.properties

CACHE_FILE_PATH	
CACHE_DM_FILE_PATH	
/ .active	"true" , "false"
/ .memoryCacheValidTime	
/ .freeMemoryPercentage	
/ .diskCacheValidTime	(:)

cachemngr.properties

- "/" /"

● Repository

■

repository.active = true

■

(가 '/sales/car')
repository.[/sales/car].active = true

■

('dept1.ozr')
repository.[/sales/car].[dept1.ozr].active = true

● Data Module

가

ODI ,

ODI '[]'

- | | |
|--|--------------------------------------|
| | datamodule.report.active = true |
| | datamodule.application.active = true |

- (가 '/sales/car')

	datamodule.report.[/sales/car].active = true
	datamodule.application.[/sales/car].active = true

- ('dept1.odi')

	datamodule.report.[/sales/car].[dept1.odi].active = true
	datamodule.application.[/sales/car].[dept1.odi].active = true

- ('Code', Fetch 'DM_BATCH_FETCH', 'A001')

	datamodule.report.[/sales/car].[dept1.odi].[DM_BATCH_FETCH].[Code=A001].active = true
	datamodule.application.[/sales/car].[dept1.odi].[DM_BATCH_FETCH].[Code=A001].active = true

- ('Code', Fetch 'DM_CONCURRENT_FETCH', 'A001')

	datamodule.report.[/sales/car].[dept1.odi].[DM_CONCURRENT_FETCH].[Code=A001].active = true
	datamodule.application.[/sales/car].[dept1.odi].[DM_CONCURRENT_FETCH].[Code=A001].active = true

clientlist.xml

{OZ_HOME}\conf\clientlist.xml

OZA, OZR

Mac Address, IP Address, HDD Serial

: clientlist.xml

XML

conf

clientlist.xml

```
<ClientList use='true'>

<Client checkAll='true'> <!-- true , MAC, IP, HDD가 -->
  <MACAddress checkAll='false'>
    <Item>00-34-25-f1-61-45</Item>
    <Item>00-14-85-f1-68-22</Item>
  </MACAddress>
  <IPAddress checkAll='false'>
    <Item>127.0.0.1</Item>
    <Item>218.36.12.xx</Item>
  </IPAddress>
  <HDDSerial checkAll='false'>
    <Item>S07HJ1LL200778</Item>
    <Item>L623471</Item>
  </HDDSerial>
</Client>
```

```

<Client checkAll='true' >
  <MACAddress checkAll='false' >
    <Item>00-0f-ea-fy-9a-6a</Item>
  </MACAddress>
  <IPAddress checkAll='true' > <!-- true      , 2      IP가      -->
    <Item>211. 116. 251. xxx</Item>
    <Item>218. 36. 12. xxx</Item>
  </IPAddress>
  <HDDSerial checkAll='false' >
    <Item>S0AFJ10Y7064418</Item>
    <Item>5JT3G3KT</Item>
  </HDDSerial >
</Client>

</ClientList>

```

■ clientlist.xml

ClientList	(MAC Address, IP Address, HDD Serial)		
	use	true	
		false	()
Client	MAC Address, IP Address, HDD Serial		
	checkAll	true	MAC Address, IP Address, HDD Serial 가
		false	MAC Address, IP Address, HDD Serial 가 ()
MACAddress	MAC Address가 MAC Address		
	checkAll	true	MAC Address가 MAC Address
		false	MAC Address가 MAC Address ()

IPAddress	IP Address가 IP Address		
	checkAll	true	IP Address가 IP Address
		false	IP Address가 IP Address ()
HDDSerial	HDD Serial HDD Serial		
	checkAll	true	HDD Serial HDD Serial
		false	HDD Serial HDD Serial ()

- , "HDDSerial" "HddSerial"
- clientlist.xml

databind.properties

{OZ_HOME}\conf\databind.properties

databind.properties

```
# unit : byte, default : 4096 byte, min : 256 byte
ConcurrentFetchSize=4096

# unit : count, default : 0
ConcurrentFirstRow=0
```

■ databind.properties

ConcurrentFetchSize	FetchType "Concurrent" Stream byte, 4096, 256 :
ConcurrentFirstRow	FetchType "Concurrent" 0 : 0

db.properties

{OZ_HOME}\conf\db.properties

가

DB Connection Pool

DB Connection Pool

aliasname.fieldname = value

■ aliasname

가

■ fieldname

■ db.properties

vendor	DBMS . (odbc, oracle, informix, sybase. ms-sql)
driver	ADO .NET (Provider)
url	ADO .NET (Provider) URL
props	ADO .NET (Provider) Connection Property String . (User/Password)
dsn	ODBC

serverAddress	가
portNo	.
sid	Oracle SID
serverName	.
dbName	.
user	.
password	.
maxconns	가 가 DB Connection
initconns	DB Connection
timeout	Maxconns Connection (:)
sessionQuery	monitor log session id 가 "monitor.properties"
doConnectionCheck	ConnectionPool connection 가 가 connection
testQueryString	doConnectionCheck true
assembly	DB : assembly.properties alias

DBMS db.properties

■ Oracle

```

oracl e_examp l e. vendor=oracl e
oracl e_examp l e. serverAddress=127. 0. 0. 1
oracl e_examp l e. portNo=1521
oracl e_examp l e. si d=ORCL
oracl e_examp l e. user=oz
oracl e_examp l e. password=oz
oracl e_examp l e. maxconns=20
oracl e_examp l e. i ni tconns=5

```

```
oracle_example.timeout=5
```

■ Informix

```
informix_example.vendor=informix
informix_example.serverAddress=127.0.0.1
informix_example.portNo=1526
informix_example.serverName=OZServer
informix_example.dbName=sysutils
informix_example.user=informix
informix_example.password=informix
informix_example.maxconns=20
informix_example.initconns=5
informix_example.timeout=5
```

■ MS-SQL

```
mssql_example.vendor=mssql
mssql_example.serverAddress=127.0.0.1
mssql_example.portNo=1433
mssql_example.dbName=newintra
mssql_example.user=sa
mssql_example.password=
mssql_example.maxconns=20
mssql_example.initconns=5
mssql_example.timeout=5
```

■ ODBC

```
odbc_example.vendor=odbc
odbc_example.dsn=odbc_example
odbc_example.user=
odbc_example.password=
odbc_example.maxconns=5
odbc_example.initconns=2
odbc_example.timeout=5
```

: NT

ODBC

DNS

ODBC

DNS

.

■ db2

```
db2_example.vendor=db2
db2_example.serverAddress=127.0.0.1
db2_example.portNo=1344
db2_example.dbName=db2
```

```
db2_examp1 e. user=db2admi n  
db2_examp1 e. maxconns=20  
db2_examp1 e. i ni tconns=5  
db2_examp1 e. ti meout=5
```

■ **sybase**

```
Sybase_examp1 e. vendor=sybase  
Sybase_examp1 e. serverAddress=127. 0. 0. 1  
Sybase_examp1 e. dbName=master  
Sybase_examp1 e. portNo=2343  
Sybase_examp1 e. user=sa  
Sybase_examp1 e. password=sybase  
Sybase_examp1 e. maxconns=20  
Sybase_examp1 e. i ni tconns=5  
Sybase_examp1 e. ti meout=5
```

dbconfig.xml, dbconfig.xsd

{OZ_HOME}\conf\dbconfig.xml

{OZ_HOME}\conf\dbconfig.xsd

DBMS ADO .NET . 가

dbconfig.xml

DBMS ADO .NET .

```
<?xml version="1.0" encoding="UTF-8"?>
<DBCONNECTION_INFORMATION                      xmlns:xsi="http://www.w3.org/2001/XMLSchema-instance"
xsi:noNamespaceSchemaLocation="dbconfig.xsd">
  <VENDOR NAME="ORACLE">
    <DISPLAYNAME>
      <LABEL LANG="en_us">ORACLE</LABEL>

    </DISPLAYNAME>
    <DRIVER>
      <DISPLAYNAME>
        <LABEL LANG="en_us">Driver</LABEL>
      </DISPLAYNAME>
      <JAVA>oracle.jdbc.driver.OracleDriver</JAVA>
      <NET>System.Data.OracleClient.OracleConnection</NET>
    </DRIVER>
    <URL>
      <DISPLAYNAME>
        <LABEL LANG="en_us">URL</LABEL>
      </DISPLAYNAME>
```

```
<JAVA>jdbc:oracle:thin:@(DESCRIPTION=(ADDRESS=(HOST={serverAddress}))(PROTOCOL=TCP)(PORT={portNo}))(CONNECT_DATA=(SID={sid})))</JAVA>
<NET>Data Source={sid}; User
ID={user}; Password={password}; </NET>
</URL>
<HANDLER>
<JAVA>com.forcs.db.OZGeneralHandler</JAVA>
<NET>com.forcs.db.OZOracleHandler</NET>
</HANDLER>
<PARAMETER_FLAG>
<JAVA>?</JAVA>
<NET>:</NET>
</PARAMETER_FLAG>
<ITEMS>
<ITEM KEY="serverAddress">
<LABEL LANG="en_us">Database server IP Address</LABEL>
<LABEL LANG="ko_kr">IP</LABEL>
<LABEL LANG="ja_jp">Database server IP Address</LABEL>
</ITEM>
<ITEM KEY="portNo">
<LABEL LANG="en_us">Database server port number</LABEL>
<LABEL LANG="ko_kr"></LABEL>
<LABEL LANG="ja_jp">Database server port number</LABEL>
</ITEM>
<ITEM KEY="sid">
<LABEL LANG="en_us">SID</LABEL>
<LABEL LANG="ko_kr"></LABEL>
<LABEL LANG="ja_jp">SID</LABEL>
</ITEM>
</ITEMS>
<ADDITIONAL>
<FIELDTYPES>
<FIELDTYPE NAME="DATE">DATE</FIELDTYPE><!--
DATE,
-->
</FIELDTYPES>
<INFOS>
<INFO KEY="DATE_EXPRESSION">TO_DATE(' @YYYY/MM/DD
@hh:mm:ss', 'YYYY/MM/DD hh24:mi:ss')</INFO>
<INFO KEY="LIKE_QUERY">Like</INFO>
<INFO KEY="LIKE_DELEMETER">%</INFO>
</INFOS>
</ADDITIONAL>
</VENDOR>
```

```

<VENDOR NAME="MS-SQL">
  <DISPLAYNAME>
    <LABEL LANG="en_us">MS-SQL</LABEL>
  </DISPLAYNAME>
  <DRIVER>
    <DISPLAYNAME>
      <LABEL LANG="en_us">Driver</LABEL>
    </DISPLAYNAME>
    <JAVA>com.microsoft.jdbc.sqlserver.SQLServerDriver</JAVA>
    <NET>System.Data.SqlClient.SqlConnection</NET>
  </DRIVER>
  <URL>
    <DISPLAYNAME>
      <LABEL LANG="en_us">URL</LABEL>
    </DISPLAYNAME>

    <JAVA>jdbc:.microsoft.sqlserver://{serverAddress}:{portNo};DatabaseName={dbName}
  </JAVA>
    <NET>Network
    Library=DBMSSOCN; Data
Source={serverAddress},{portNo}; Initial
    Catalog={dbName}; User
ID={user}; Password={password}; </NET>
  </URL>
  <HANDLER>
    <JAVA>com.forcs.db.OZMSSQLHandler</JAVA>
    <NET>com.forcs.db.OZMssqlHandler</NET>
  </HANDLER>
  <PARAMETER_FLAG>
    <NET>@@</NET>
  </PARAMETER_FLAG>
  <ITEMS>
    <ITEM KEY="serverAddress">
      <LABEL LANG="en_us">Database server IP Address</LABEL>
      <LABEL LANG="ko_kr">IP</LABEL>
      <LABEL LANG="ja_jp">Database server IP Address</LABEL>
    </ITEM>
    <ITEM KEY="portNo">
      <LABEL LANG="en_us">Database server port number</LABEL>
      <LABEL LANG="ko_kr"></LABEL>
      <LABEL LANG="ja_jp">Database server port number</LABEL>
    </ITEM>
    <ITEM KEY="dbName">
      <LABEL LANG="en_us">Database name</LABEL>
      <LABEL LANG="ko_kr"></LABEL>
      <LABEL LANG="ja_jp">Database name</LABEL>

```



```
</ITEM>
</ITEMS>
<ADDITIONAL>
    <FIELDTYPES>
        <FIELDTYPE NAME="DATE">DATETIME</FIELDTYPE>
    </FIELDTYPES>
    <INFOS>
        <INFO KEY="DATE_EXPRESSION">CAST('@YYYY. @MM. @DD
@hh: @mm: @ss' AS DATETIME)</INFO>
    </INFOS>
</ADDITIONAL>
</VENDOR>
<VENDOR NAME="IBM-DB2">
    <DISPLAYNAME>
        <LABEL LANG="en_us">IBM-DB2</LABEL>
    </DISPLAYNAME>
    <DRIVER>
        <DISPLAYNAME>
            <LABEL LANG="en_us">Driver</LABEL>
        </DISPLAYNAME>
        <JAVA>COM. ibm. db2. jdbc. net. DB2Driver</JAVA>
        <NET>IBM. Data. DB2. DB2Connecton</NET>
    </DRIVER>
    <URL>
        <DISPLAYNAME>
            <LABEL LANG="en_us">URL</LABEL>
        </DISPLAYNAME>
        <JAVA>jdbc: db2: //{serverAddress}: {portNo}/{dbName}</JAVA>
        <NET>Server={serverAddress}: {portNo}; Database={dbName}; User
ID={user}; Password={password}; </NET>
    </URL>
    <HANDLER>
        <!-- JAVA , OZGeneralHandler . . -->
        <NET>com. forcs. db. OZdb2Handler</NET>
    </HANDLER>
    <PARAMETER_FLAG>
        <NET>@</NET>
    </PARAMETER_FLAG>
</ITEMS>
<ITEM KEY="serverAddress">
    <LABEL LANG="en_us">Database server IP Address</LABEL>
    <LABEL LANG="ko_kr">IP </LABEL>
    <LABEL LANG="ja_jp">Database server IP Address</LABEL>
</ITEM>
```

```

        <ITEM KEY="portNo">
            <LABEL LANG="en_us">Database server port number</LABEL>
            <LABEL LANG="ko_kr">                                </LABEL>
            <LABEL LANG="j_a_j_p">Database server port number</LABEL>
        </ITEM>
        <ITEM KEY="dbName">
            <LABEL LANG="en_us">Database name</LABEL>
            <LABEL LANG="ko_kr">                                </LABEL>
            <LABEL LANG="j_a_j_p">Database name</LABEL>
        </ITEM>
    </ITEMS>
    <ADDITIONAL>
        <FIELDTYPES>
            <FIELDTYPE NAME="DATE">TIMESTAMP</FIELDTYPE>
        </FIELDTYPES>
        <INFOS>
            <INFO KEY="DATE_EXPRESSION">TO_DATE(' @YYYY-MM-DD
@hh: @mm: @ss' , ' YYYY-MM-DD HH24: MI : SS' )</INFO>
        </INFOS>
    </ADDITIONAL>
</VENDOR>
<VENDOR NAME="ODBC">
    <DISPLAYNAME>
        <LABEL LANG="en_us">ODBC</LABEL>
    </DISPLAYNAME>
    <DRIVER>
        <DISPLAYNAME>
            <LABEL LANG="en_us">Driver</LABEL>
        </DISPLAYNAME>
        <JAVA>sun. jdbc. odbc. JdbcOdbcDriver</JAVA>
        <NET>System. Data. Odbc. OdbcConnecti on</NET>
    </DRIVER>
    <URL>
        <DISPLAYNAME>
            <LABEL LANG="en_us">URL</LABEL>
        </DISPLAYNAME>
        <JAVA>j dbc: odbc: {dsn}</JAVA>
        <NET>Dsn={dsn}; Ui d={user}; Pwd={password}</NET>
    </URL>
    <HANDLER>
        <NET>com. forcs. db. OZGeneral Handl er</NET>
    </HANDLER>
    <PARAMETER_FLAG>
        <NET>@</NET>

```

```
</PARAMETER_FLAG>
<ITEMS>
  <ITEM KEY="dsn">
    <LABEL LANG="en_us">Data Source Name</LABEL>
    <LABEL LANG="ko_kr">                                </LABEL>
    <LABEL LANG="j a_j p">Data Source Name</LABEL>
  </ITEM>
</ITEMS>
</VENDOR>
<VENDOR NAME="INFORMIX">
  <DISPLAYNAME>
    <LABEL LANG="en_us">INFORMIX</LABEL>
  </DISPLAYNAME>
  <DRIVER>
    <DISPLAYNAME>
      <LABEL LANG="en_us">Driver</LABEL>
    </DISPLAYNAME>
    <JAVA>com.informix.jdbc.IfxDriver</JAVA>
    <NET>IBM.Data.Informix.IfxConnecti on</NET>
  </DRIVER>
  <URL>
    <DISPLAYNAME>
      <LABEL LANG="en_us">URL</LABEL>
    </DISPLAYNAME>
    <JAVA>jdbc:Informix-
sql i : // {serverAddress} : {portNo} / {dbName} : informixserver={serverName}</JAVA>

    <NET>Host={serverAddress}; Service={portNo}; Server={serverName}; Database={dbName
}; User ID={user}; Password={password}; </NET>
  </URL>
  <HANDLER>
    <NET>com.forcs.db.OZInformixHandler</NET>
  </HANDLER>
</ITEMS>
  <ITEM KEY="serverAddress">
    <LABEL LANG="en_us">Database server IP Address</LABEL>
    <LABEL LANG="ko_kr">                                IP      </LABEL>
    <LABEL LANG="j a_j p">Database server IP Address</LABEL>
  </ITEM>
  <ITEM KEY="portNo">
    <LABEL LANG="en_us">Database server port number</LABEL>
    <LABEL LANG="ko_kr">                                </LABEL>
    <LABEL LANG="j a_j p">Database server port number</LABEL>
  </ITEM>
```

```

        <ITEM KEY="serverName">
            <LABEL LANG="en_us">Database server name</LABEL>
            <LABEL LANG="ko_kr">                                </LABEL>
            <LABEL LANG="j a_j p">Database server name</LABEL>
        </ITEM>
        <ITEM KEY="dbName">
            <LABEL LANG="en_us">Database name</LABEL>
            <LABEL LANG="ko_kr">                                </LABEL>
            <LABEL LANG="j a_j p">Database name</LABEL>
        </ITEM>
    </ITEMS>
</VENDOR>
<VENDOR NAME="SYBASE">
    <DISPLAYNAME>
        <LABEL LANG="en_us">SYBASE</LABEL>
    </DISPLAYNAME>
    <DRIVER>
        <DISPLAYNAME>
            <LABEL LANG="en_us">Driver</LABEL>
        </DISPLAYNAME>
        <JAVA>com. sybase. j dbc2. j dbc. SybDriver</JAVA>
        <NET>Sybase. Data. AseClient. AseConnecti on</NET>
    </DRIVER>
    <URL>
        <DISPLAYNAME>
            <LABEL LANG="en_us">URL</LABEL>
        </DISPLAYNAME>

    <JAVA>j dbc: sybase: {dsn}: {serverAddress}: {portNo}/{dbName}</JAVA>
    <NET>Network                                Library=DBMSSOCN; Data
Source={serverAddress}, {portNo}; Initial          Catalog={dbName}; User
ID={user}; Password={password}; </NET>
    </URL>
    <HANDLER>
        <NET>com. forcs. db. OZSybaseHandl er</NET>
    </HANDLER>
    <PARAMETER_FLAG>
        <NET>@</NET>
    </PARAMETER_FLAG>
</ITEMS>
    <ITEM KEY="dsn" DEFAULT="Tds">
        <LABEL LANG="en_us">Data source name</LABEL>
        <LABEL LANG="ko_kr">                                </LABEL>
        <LABEL LANG="j a_j p">Data source name</LABEL>

```

```
</ITEM>
<ITEM KEY="serverAddress">
    <LABEL LANG="en_us">Database server IP Address</LABEL>
    <LABEL LANG="ko_kr">IP</LABEL>
    <LABEL LANG="j_a_j_p">Database server IP Address</LABEL>
</ITEM>
<ITEM KEY="portNo">
    <LABEL LANG="en_us">Database server port number</LABEL>
    <LABEL LANG="ko_kr"></LABEL>
    <LABEL LANG="j_a_j_p">Database server port number</LABEL>
</ITEM>
<ITEM KEY="dbName">
    <LABEL LANG="en_us">Database name</LABEL>
    <LABEL LANG="ko_kr"></LABEL>
    <LABEL LANG="j_a_j_p">Database name</LABEL>
</ITEM>
</ITEMS>
<ADDITIONAL>
    <FIELDTYPES>
        <FIELDTYPE NAME="DATE">DATETIME</FIELDTYPE>
    </FIELDTYPES>
    <INFOS>
        <INFO KEY="DATE_EXPRESSION">CONVERT(DATETIME,
' @YYYY. @MM. @DD @hh: @mm: @ss' )</INFO>
    </INFOS>
</ADDITIONAL>
</VENDOR>
<VENDOR NAME="UNI -SQL">
    <DISPLAYNAME>
        <LABEL LANG="en_us">UNI -SQL</LABEL>
    </DISPLAYNAME>
    <DRIVER>
        <DISPLAYNAME>
            <LABEL LANG="en_us">Driver</LABEL>
        </DISPLAYNAME>
        <JAVA>uni sql . j dbc. dri ver. Uni SQLDri ver</JAVA>
    </DRIVER>
    <URL>
        <DISPLAYNAME>
            <LABEL LANG="en_us">URL</LABEL>
        </DISPLAYNAME>
        <JAVA>j dbc: uni sql : {serverAddress}: {portNo}: {dbName}: : :</JAVA>
    </URL>
</HANDLER/>
```

```

<ITEMS>
  <ITEM KEY="serverAddress">
    <LABEL LANG="en_us">Database server IP Address</LABEL>
    <LABEL LANG="ko_kr">IP</LABEL>
    <LABEL LANG="j_a_j_p">Database server IP Address</LABEL>
  </ITEM>
  <ITEM KEY="portNo">
    <LABEL LANG="en_us">Database server port number</LABEL>
    <LABEL LANG="ko_kr"></LABEL>
    <LABEL LANG="j_a_j_p">Database server port number</LABEL>
  </ITEM>
  <ITEM KEY="dbName">
    <LABEL LANG="en_us">Database name</LABEL>
    <LABEL LANG="ko_kr"></LABEL>
    <LABEL LANG="j_a_j_p">Database name</LABEL>
  </ITEM>
</ITEMS>
</VENDOR>
<VENDOR NAME="User-Defi ned">
  <DI SPLAYNAME>
    <LABEL LANG="en_us">User-Defi ned</LABEL>
  </DI SPLAYNAME>
  <DRIVER>
    <DI SPLAYNAME>
      <LABEL LANG="en_us">Dri ver</LABEL>
    </DI SPLAYNAME>
    <JAVA>{dri ver}</JAVA>
  </DRIVER>
  <URL>
    <DI SPLAYNAME>
      <LABEL LANG="en_us">URL</LABEL>
    </DI SPLAYNAME>
    <JAVA>{url}</JAVA>
  </URL>
<ITEMS>
  <ITEM KEY="dri ver">
    <LABEL LANG="en_us">Dri ver Cl ass Name</LABEL>
    <LABEL LANG="ko_kr">JDBC</LABEL>
    <LABEL LANG="j_a_j_p">Dri ver Cl ass Name</LABEL>
  </ITEM>
  <ITEM KEY="url ">
    <LABEL LANG="en_us">Connecti on URL</LABEL>
    <LABEL LANG="ko_kr">JDBC URL</LABEL>
    <LABEL LANG="j_a_j_p">Connecti on URL</LABEL>
  </ITEM>
</ITEMS>

```

```

        </ITEM>
    </ITEMS>
</VENDOR>
</DBCONNECTI ON_I NFORMATI ON>

```

- OZ dbconfig.xml
- VENDOR . (
 - VENDOR .)
- DB "user" "password" ITEM
 - . (ITEM
 - 가 .)
- <ITEM> KEY /
- <ITEM> KEY
 - (~, !, @, #, \$, %, ^, *, (), _, +, |, \,
 - =, -, { }, [], :, ;, ., ,, /, ?)
- <ITEM> KEY
 - "alias", "vendor", "key", "user", "password", "initconns", "maxconns",
 "timeout", "initSqls", "closeSqls", "doAutoCommit", "doConnectionCheck",
 "testQueryString", "sessionQuery", "_encrypted", "NAME",
 "INCLUDE", "VENDOR", "USERNAME", "ENCYPW", "PASSWORD",
 "USEALIAS", "POOLALIAS", "ALIASFILENAME", "AUTOCOMMIT",
 "ENCODECHARSET", "DECODECHARSET", "TIMEFORMAT", "DATEFORMAT",
 "TIMESTAMPFORMAT"
- RDB DB Vendor <ADDITIONAL> 가
 - DATE_EXPRESSION . (
 - DB Vendor가 가

Vendor	DATE type	DATE_EXPRESSION
ORACLE	DATE	TO_DATE('@YYYY/@MM/@DD @hh: @mm: @ss', 'YYYY/MM/DD hh24: mi: ss')
MSSQL	DATETIME	CAST('@YYYY. @MM. @DD @hh: @mm: @ss' AS DATETIME)
DB2	TIMESTAMP	TO_DATE('@YYYY- @MM- @DD @hh: @mm: @ss', 'YYYY-MM-DD HH24: MI: SS')
SYBASE	DATETIME	CONVERT(DATETIME, '@YYYY. @MM. @DD

. dbconfig.xml


```
</xsd: sequence>
</xsd: complexType>

<xsd: complexType name="t_PARAMETERFLAG">
  <xsd: sequence>
    <xsd: element name="JAVA" type="xsd:string" minOccurs="0"
maxOccurs="1" />
    <xsd: element name="NET" type="xsd:string" minOccurs="0"
maxOccurs="1" />
  </xsd: sequence>
</xsd: complexType>

<xsd: complexType name="t_ITEM">
  <xsd: sequence>
    <xsd: element name="LABEL" type="t_LABEL" minOccurs="1"
maxOccurs="unbounded" />
  </xsd: sequence>
  <xsd: attribute name="KEY" type="xsd:string" use="required" />
  <xsd: attribute name="USE_PROPERTY" type="xsd:string" use="optional" />
  <xsd: attribute name="DEFAULT" type="xsd:string" use="optional" />
</xsd: complexType>

<xsd: complexType name="t_ITEMS">
  <xsd: sequence>
    <xsd: element name="ITEM" type="t_ITEM" minOccurs="0"
maxOccurs="unbounded" />
  </xsd: sequence>
</xsd: complexType>

<xsd: complexType name="t_FIELDTYPE">
  <xsd: simpleContent>
    <xsd: extension base="xsd:string">
      <xsd: attribute name="NAME" type="xsd:string" />
    </xsd: extension>
  </xsd: simpleContent>
</xsd: complexType>

<xsd: complexType name="t_FIELDTYPES">
  <xsd: sequence>
    <xsd: element name="FIELDTYPE" type="t_FIELDTYPE" minOccurs="0"
maxOccurs="unbounded" />
  </xsd: sequence>
</xsd: complexType>
```

```

<xsd:complexType name="t_INFO">
  <xsd:simpleContent>
    <xsd:extension base="xsd:string">
      <xsd:attribute name="KEY" type="xsd:string" />
    </xsd:extension>
  </xsd:simpleContent>
</xsd:complexType>

<xsd:complexType name="t_INFOS">
  <xsd:sequence>
    <xsd:element name="INFO" type="t_INFO" minOccurs="0"
maxOccurs="unbounded" />
  </xsd:sequence>
</xsd:complexType>

<xsd:complexType name="t_ADDITIONAL">
  <xsd:sequence>
    <xsd:element name="FIELDTYPES" type="t_FIELDTYPES"
minOccurs="0" maxOccurs="1" />
    <xsd:element name="INFOS" type="t_INFOS" minOccurs="0"
maxOccurs="1" />
  </xsd:sequence>
</xsd:complexType>

<xsd:complexType name="t_VENDOR">
  <xsd:sequence>
    <xsd:element name="DISPLAYNAME" type="t_DISPLAYNAME" />
    <xsd:element name="DRIVER" type="t_DRIVER" />
    <xsd:element name="URL" type="t_DRIVER" />
    <xsd:element name="HANDLER" type="t_HANDLER" minOccurs="0"
maxOccurs="1" />
    <xsd:element name="PARAMETER_FLAG" type="t_PARAMETERFLAG"
minOccurs="0" maxOccurs="1" />
    <xsd:element name="ITEMS" type="t_ITEMS" minOccurs="0"
maxOccurs="1" />
    <xsd:element name="ADDITIONAL" type="t_ADDITIONAL"
minOccurs="0" maxOccurs="1" />
  </xsd:sequence>
  <xsd:attribute name="NAME" type="xsd:string" use="required" />
</xsd:complexType>

<xsd:element name="VENDOR" type="t_VENDOR" />

```

```
<xsd:element name="DBCONNECTION_INFORMATION">
  <xsd:complexType>
    <xsd:sequence>
      <xsd:element ref="VENDOR" minOccurs="0"
maxOccurs="unbounded" />
    </xsd:sequence>
  </xsd:complexType>
</xsd:element>
</xsd:schema>
```

log.properties

{OZ_HOME}\conf\log.properties

```
log 'LOG4OZ'
FILE 'LOG4OZ' 가 , "Set Prioritylog Level", "Appender
ROLLING_FILE" HTTP
```

log.properties

```
#-----
# confi gurai on of OZ loggi ng system (LOG4OZ)
#-----
#
# Set Pri ori tylog Level
#
# DEBUG, INFO, WARN, ERROR
Pri ori ty=DEBUG
#
# appender ROLLING_FILE
# File
# MaxFileSi ze
# 가 가
#
# MaxBackupIndex
#
# Append :
# Immedi ateFl ush : 가
# false
```

```
#
#

ROLLING_FILE.Type=RollingFile
ROLLING_FILE.File=%OZ_HOME%/logs/server.log
# ----
# ROLLING_FILE.Type=DailyRollingFile //
# ROLLING_FILE.DatePattern=yyyy-MM-dd
# -----
ROLLING_FILE.Append=true
ROLLING_FILE.MaxBackupIndex=5
ROLLING_FILE.MaxFileSize=1MB
ROLLING_FILE.ImmediateFlush=true

#
#-----
# configuration of HTTPStore Logging
#-----
#HTTPSTORE_LOG_FILE=MANUAL (AUTO/MANUAL/NONE)
#HTTPSTORE_LOG_FILE.LOCATION=%OZ_HOME%/logs (Directory Name)
```

■ LOG4OZ

Set Prioritylog level	priority	ERROR	
		WARN	"ERROR"
		INFO	"ERROR"
		DEBUG	"ERROR", "INFO"
appender ROLLING_	ROLLING_FILE	Rolling File	

FILE	.Type	RollingFile	ex) server.log, server.log.1, server.log.2, ...	
		DailyRollingFile	(DatePattern)	
	ROLLING_FILE .DatePattern	"DatePattern"		
	ROLLING_FILE .File			
	ROLLING_FILE .Append	가가		
		true	가	
		false	가	
	ROLLING_FILE .MaxBackupIndex	Backup	가	가
	ROLLING_FILE .MaxFileSize			
	ROLLING_FILE .ImmediateFlush			

- HTTP
- HTTP HTTP 가 가 ODI , ODI
가 HTTP

HTTPSTORE_LOG_FILE	HTTP		
	MANUAL	HTTP ()	

	AUTO	HTTP
	NONE	HTTP
HTTPSTORE_LOG_FILE.LOCATION	가 '%OZ_HOME%/logs'	

- HTTP
- HTTP
- HTTP
- HTTP
- 'HTTPSTORE_LOG_FILE=HTTP' HTTP
- 'OZ_HTTPSTATEMENT.LOG.#' '#'
- 1 가

■ DatePattern

Pattern	Rollover schedule	
yyyy-MM		6 12 server.log server.log.2005-06 server.log
yyyy-ww	()	가 , 1 12 server.log server.log.2005-01 server.log
yyyy-MM-dd	()	7 1 server.log server.log.2005-07-01 server.log
yyyy-MM-ddt	12 A : AM P : PM	7 1 12 server.log server.log.2005-07-01-09P server.log

yyyy-MM-dd-HH		7 1 10 server.log server.log.2005-07-01-09 server.log .
yyyy-MM-dd-HH-mm		7 1 10 server.log server.log.2005-07-01-09-59 server.log .

monitor.properties

{OZ_HOME}\conf\monitor.properties

monitor.properties

```
#-----  
#  configurai on of OZ Trasaction Monoti or Log  
#-----  
#  
#  OZ 4.0  
#  
#  
#  
#  Whether Log or not  
#  
MONI TOR.Active=true  
MONI TOR.Fi l e=%OZ_HOME%\l ogs\moni tor.l og  
MONI TOR.MaxBackupI ndex=5  
MONI TOR.MaxFi l eSi ze=1MB  
MONI TOR.Immedi ateFl ush=true
```

■ monitor.properties

Active	
File	

MaxBackupIndex	Backup 가 . Backup 가
MaxFileSize	
ImmediateFlush	

■

CSV

MARK/THR_ID/TIME/F_MEM/T_MEM/S_CODE/S_STATUS/S_PARAMS/C_IP/DB_SS/E_TIME

MARK		start, end
THR_ID	ID	(int)
TIME		1970 1 1 0 Millisecond (long), (int)
F_MEM	가	: byte
T_MEM	JVM	: byte
S_CODE	" "	(int)
S_STATUS		: 9001 : 9002
S_PARAMS		
C_IP	IP	
DB_SS	DBMS ID	
E_TIME		1970 1 1 0 Millisecond (long), (int)

- sessionQuery

session ID 가 DB db.properties

<alias>.sessionQuery ID .

session ID가 sessionQuery .

```
alias.sessionQuery = "[DB Query]"
```

```
<informix>
```

```
SELECT DBINFO("\sessionid") FROM SysTables WHERE TabID = 1
```

```
<mssql>
```

```
select @@spid
```

```
<oracle>
```

```
SELECT sid FROM V$SESSION WHERE audsid = userenv('sessionid')
```

```
<sybase>
```

```
select @@spid
```

-

가

```
// Repository
```

```
CREATE USER = 100;
```

```
DELETE USER = 101;
```

```
CHECK USER PWD = 102;
```

```
UPDATE USER PWD = 103;
```

```
DISABLE USER LOGIN = 104;
```

```
ENABLE USER LOGIN = 105;
```

```
ISENABLE USER LOGIN = 106;
```

```
UPDATE USER DESCRIPTION = 107;
```

```
GET USER DESCRIPTION = 108;
```

```
GET GROUPID USER = 109;
```

```
GET USERID NAME = 110;
```

```
UPDATE GROUPID USER = 111;
```

```
GET USER LIST = 112;
```

```
CREATE GROUP = 113;
```

```
DELETE GROUP = 114;
```

```
UPDATE USER GROUPADMIN = 115;
```

```
IS USER GROUPADMIN = 116;
```

```
UPDATE UPPER GROUPID = 117;
```

```
GET USER LIST GROUP = 118;
```

```
GET GROUP LIST GROUP = 119;
```

```
CREATE ITEM = 120;
DELETE ITEM = 121;
GET ITEM = 122;
GET CATEGORYID ITEM = 123;
GET GROUPID ITEM = 124;
UPDATE CATEGORYID ITEM = 125;
UPDATE GROUPID ITEM = 126;
GET ITEM LIST = 127;
CREATE CATEGORY = 128;
DELETE CATEGORY = 129;
UPDATE UPPER CATEGORYID = 130;
GET ITEM LIST CATEGORY = 131;
GET CATEGORY LIST CATEGORY = 132;
UPDATE ITEM USER AUTH = 133;
UPDATE ITEM GROUP AUTH = 134;
GET USER AUTH ITEM = 135 ;
GET GROU AUTH ITEM = 136;
GET ITEM LIST AUTH USER = 137;
GET ITEM LIST AUTH GROUP = 138;
GET USER LIST AUTH ITEM = 139;
GET GROUP LIST AUTH ITEM = 140;
GET ITEMID = 141;
GET ITEM DATAINFO = 142;
UPDATE USERNAME =143;
UPDATE GROUPNAME = 144;
UPDATE ITEMNAME = 145;
GET ITEMPATH = 146;
GET DIRECTITEM = 147;
UPDATE CATEGORY USERAUTH = 148;
UPDATE CATEGORY GROUPAUTH =149;
GET USERAUTH CATEGORY = 150;
GET GROUPAUTH CATEGORY = 151;
GET CATEGORYLIST USERAUTH = 152;
GET CATEGORYLIST GROUPAUTH = 153;
GET USERLISTAUTH CATEGORY = 154;
GET GROUPLISTAUTH CATEGORY = 155;
UPDATE LOGINDEFAULT = 156;

UPDATE CATEGORYNAME = 157;
CREATE ITEMINDEX = 158;
DELETE ITEMINDEX = 159;
GET ITEMINDEX LIST = 160;
FINDE ITEM ITEMINDEX = 161;
```

```
UPDATE ITEM FILE = 162;
CHECK OUT ITEM = 163;
CHECK IN ITEM = 164;
ROLLBACK ITEM = 165;
UNDO CHECK OUT ITEM = 166;
GET ITEM BYVERSION = 167;
GET HISTORY LIST = 168;
CLEAR HISTORY = 169;
CHECK OUT USER = 170;

GET CATEGORYINFO = 171;
GET ITEMINFO = 172;
GET USERNAME BYID = 173;
HAS SPECIFIC ITEM = 174;

GET ITEMCOUNT IN CATEGORY = 175;
LOGIN TO SERVER = 176;
LOGIN TO SERVER FROM SCHEDULER = 177;
GET ODI LIST = 178;
GET CATEGORYID = 179;
GET ITEMID WITH PATH = 180;
UPDATE DIRECT ITEM FILE = 181;
GET USERINFO = 182;
UPDATE ITEM DESCRIPTION = 183;
GET GROUPINFO = 184;
CREATE CATEGORY WITH PATH = 185;
CREATE ITEM WITH NAME = 186;
GET DIRECT ITEMS = 187;
LOGIN USER = 188;
LOGOUT USER= 189;
ISLOGIN USER = 190;
GET ITEMLIST WITH PERMISSION USER = 191;
GET CATEGORYLIST WITH PERMISSION USER = 192;
GET ITEMLIST WITH PERMISSION GROUP = 193;
GET CATEGORYLIST WITH PERMISSION GROUP = 194;
GET CATEGORYLIST OVER VIEW IN ROOT = 195;
GET DIRECT ITEM COMPRESSED = 196;
GET ITEM LIST CATEGORY NAME = 197;
GET ITEMLIST WITH PERMISSION USER CNAME = 198;
GET ITEMLIST WITH PERMISSION GROUP CNAME = 199;

// Datamodule
GET DATAMODULE = 380;
GET DEFAULT PARAMETER = 381;
```

```
GET USDM = 382;
GET APPLICATION DM = 383;

// Connection Pool API
GET POOL INFO = 400;
GET POOL STATUS LIST = 401;
GET POOL INFO LIST = 402;
ADD POOL = 403 ;
REMOVE POOL = 404 ;
SAVE = 405 ;

// Log API
GET CONFIG = 406 ;
CONFIGURE PROPERTY = 407 ;
CONFIGURE STRING = 408 ;
GET FILE APPENDER FILE = 409 ;
SET PRIORITY = 410 ;

// Server Info API
GET VERSIONS = 411;
GARBAGE COLLECT = 412;
GET MEMORYINFO = 413;
GET HANDLER COUNT = 414;
GET MEMORY STATUS = 415;
GET CUMULATED COUNT = 416;
GET CUMULATED TIMER = 417;
GET DYNAMIC INFORMATION = 418;
DOWN MONITOR LOG = 419;

// Cache API
GET CACHE CONFIG = 420;
SET CACHE CONFIG = 421;
LOGAGENT TEST = 422;
GET REALTIME LOG = 423;
GET REALTIME MONITOR LOG = 424;
DELETE CACHE DATA = 1100;

// STOP
SERVER STOP = 500;
SERVER RESTART = 501;

// Application DataModule
GET DATAMODULE APP = 520;
```

```
// Scheduler      API
    GET SCHEDULED RESULT LIST = 600 ;
    REMOVE SCHEDULED RESULT = 601 ;
    REMOVE SCHEDULED RESULT LIST = 602 ;
    SET USDM = 603;

// Repository      API
    GET REPOSITORY CONFIG = 700;
    SET REPOSITORY CONFIG = 701;
    RELOAD REPOSITORY = 702;

// DM Version 가
    GET DM VERSION = 800;

// USL 가
    GET USL = 900;
    USE USL = 901;
```

ozserver.properties

{OZ_HOME}\ozserver.properties

가

ozserver.properties

```
#-----  
# Main configuration of ozserver  
#-----  
  
path.oz.server.home=  
  
path.license.file=%OZ_HOME%/license/ozlicense.xml  
path.log.properties.file=%OZ_HOME%/conf/log.properties  
path.security.properties.file=%OZ_HOME%/conf/spmgr.properties  
path.connpool.properties.file=%OZ_HOME%/conf/db.properties  
path.cache.properties.file=%OZ_HOME%/conf/cachemngr.properties  
path.monitor.properties.file=%OZ_HOME%/conf/monitor.properties  
path.repository.properties.file=%OZ_HOME%/conf/repository.properties  
path.usl.properties.file=%OZ_HOME%/conf/uslmngr.properties  
path.schedule.properties.file=%OZ_HOME%/conf/srmngr.properties  
path.sapclient.properties.file=%OZ_HOME%/conf/sap.properties  
path.databind.properties.file=%OZ_HOME%/conf/databind.properties  
path.assembly.properties.file=%OZ_HOME%/conf/assembly.properties  
path.ozservice.properties.file=%OZ_HOME%/conf/ozservice.properties  
path.ozdbconfig.properties.file=%OZ_HOME%/conf/dbconfig.xml
```

: %OZ_HOME%

%OZ_HOME%

가

ozserver.properties

path.oz.server.home

가

■ ozserver.properties

path.oz.server.home	.
path.license.file	ozlicense.xml .
path.log.properties.file	log.properties .
path.securitypolicy.properties.file	spmng.properties .
path.connpool.properties.file	db.properties .
path.cache.properties.file	cachemngr.properties .
path.monitor.properties.file	monitor.properties .
path.repository.properties.file	repository.properties .
path.usl.properties.file	uslmng.properties .
path.schedule.properties.file	srnmng.properties .
path.sapclient.properties.file	sap.properties .
path.databind.properties.file	databind.properties .
path.clientinfo.properties.file	clientlist.xml .
path.assembly.properties.file	assembly.properties .
path.ozservice.properties.file	ozservice.properties .
path.ozdbconfig.properties.file	dbconfig.xml .

ozservice.properties

{OZ_HOME}\conf\ozservice.properties

- Post – SOAP DataModule
- Post – SOAP DataAction
- Get wsdl

ozservice.properties

```
#-----  
# Main configuration of ozservice  
#-----  
  
enable_ozserver=true  
enable_websevice=true
```

■ ozservice.properties

enable_ozserver	. (:true)
enable_websevice	. (:true)

repository.properties

{OZ_HOME}\conf\repository.propeties

repository.properties

```
###
###   Repository Properties
###   Last Modified : Wed Oct 15 13:29:05 KST 2003
###
# RDB, BUILT IN, NONE
REPOSITORY_TYPE = RDB
REPOSITORY_FILE_PATH = %OZ_HOME%/repository_files/

#Backup History for None Type
REPOSITORY_NONE_BACKUP=false
REPOSITORY_NONE_BACKUP_PATH=%OZ_HOME%/repository_files_bak/
REPOSITORY_NONE_BACKUP_ITEM_COUNT=10
REPOSITORY_NONE_BACKUP_ITEM_VALID_DAYS=0

#Item file save number per a directory
#Default value is 500
#The value must be larger than 0
REPOSITORY_ITEM_NUMBER_PER_DIRECTORY = 500

#History item's valid days ( The history item over the value of day is deleted, when
check in the item )
#Default value is 30
#The 0 value is disable.
REPOSITORY_HISTORY_ITEM_VALID_DAYS = 10
```

```
REPOSITORY_QUERY_MAXBACKUPINDEX = 5
REPOSITORY_QUERY_MAXFILESIZE = 1M
REPOSITORY_QUERY_IMMEDIATEFLUSH = true
#
# DB alias in /conf/db.properties to use repository
#
# note: ignored if REPOSITORY_TYPE is BUILTIN
#
REPOSITORY_DB_ALIAS = mssql_test3
#
# note: ignored if REPOSITORY_TYPE is BUILTIN and RDB
```

■ repository.properties

TYPE	RDB	가 DB
	BUILTIN	DB (Hypersonic SQL DB)
	NONE	
FILE_PATH		
REPOSITORY_NONE_BACKUP	None	
REPOSITORY_NONE_BACKUP_PATH	None	
REPOSITORY_NONE_BACKUP_ITEM_COUNT	None	
REPOSITORY_NONE_BACKUP_ITEM_VALIDDAYS	None	
ITEM_NUMBER_PER_DIRECTORY		
HISTORY_ITEM_VALID_DAYS		
QUERY_MAXBACKUPINDEX	BUILTIN DB	
QUERY_MAXFILESIZE	BUILTIN DB	
QUERY_IMMEDIATEFLUSH	BUILTIN DB	

DB_ALIAS	db.properties Repository	Alias가 .	DB
----------	-----------------------------	-------------	----

REPOSITORY_TYPE 'NONE'

- .가 , 'admin'
'guest' .
- Check-In Check-Out ,
Roll-back .
- OS가 Windows
.

REPOSITORY_TYPE 'RDB'

- db.properties 'vender=User' RDB
User .
- RDB가 MS-SQL , MS-SQL ()
.

sap.properties

{OZ_HOME}\conf\sap.properties

가 SAP
SAP Connection Pool
SAP Connection Pool
SAP 가 UI

sap.properties

```
###
###   Configurai on of SAP Connecti on Manager
###

#<al i as>. proxy=
#<al i as>. cl i ent=
#<al i as>. user=
#<al i as>. password=
#<al i as>. l anguage=
#<al i as>. host=
#<al i as>. sysno=
#<al i as>. group=
#<al i as>. i strace=fal se
#<al i as>. assembl y=
```

■ sap.properties

<alias>.proxy	SAP Proxy
<alias>.client	SAP
<alias>.user	SAP
<alias>.password	SAP
<alias>.language	SAP
<alias>.host	SAP
<alias>.sysno	SAP
<alias>.group	
<alias>.lstrace	SAP Trace
<alias>.assembly	SAP : assembly.properties alias

spmgr.properties

{OZ_HOME}\conf\spmgr.propeties

spmgr.properties

```
# Secure Level [ high / middle / low ]
# default : low
client_message_secure_level = low

user.multillogin= true
#user.sessionTimeout = 10
allow_service_qd=false
enable_service_repository=false
allow_service_em=false
allow_service_rm=false
allow_service_rv=false
allow_service_av=false
allow_service_api=false
allow_service_sh=false
allow_service_ps=false
```

■ spmgr.properties

multillogin	

sessionTimeout	: (user.multilogin 'false') 가	
client_message_security_level	high	
	middle	Exception Name
	low	
allow_service_qd	ODI 가 :	
enable_service_repository		
allow_service_em	Enterprise Manager	가
allow_service_rm	Repository Manager	가
allow_service_rv	OZR	가
allow_service_av	OZA	가
allow_service_api	API	가
allow_service_sh	Scheduler	가
allow_service_ps	Push Server	가

: enable_service_repository

- enable_service_repository=true

		가	가
allow_service_qd	true	O	O
	false	O	X
allow_service_rv	true	O	O
	false	O	X

allow_service_av	true	O	O
	false	O	X

allow_service_qd, allow_service_rv, allow_service_av false
, enable_service_repository true
가 .

- enable_service_repository=false

		가	가
allow_service_qd	true	X	X
	false	X	X
allow_service_rv	true	X	X
	false	X	X
allow_service_av	true	X	X
	false	X	X

enable_service_repository false , allow_service_qd,
allow_service_rv, allow_service_av true 가
.

srmngr.properties

{OZ_HOME}\conf\srmngr.properties

SDM

SDM

.

srmngr.properties

```
# default t : false
use_scheduled_data=true

# The path that scheduled data modules are stored.
# default t : %OZ_HOME%/scheduled_data
datamodule_path=%OZ_HOME%/scheduled_data
```

■ srmngr.properties

	SDM SDM
	"true" "datamodule_path"
use_scheduled_data	SDM "Fetch Type"
	"BATCH" , "Fecth Type"
	"CONCURRENT"
datamodule_path	SDM

uslmngr.properties

{OZ_HOME}\conf\uslmngr.properties

User Security Logic

uslmngr.properties

```
# oz4.0 USL configuration

#
# set whether use user security logic or not globally
#
UseUserSecurityLogicVer30 = true

OZDefault_SERVER=oz.usl.OZUSLServerSample
OZDefault_CLIENT=oz.usl.OZUSLClientSample
```

■ uslmngr.properties

UseUserSecurityLogicVer30	User Security Logic
OZDefault_SERVER	USL
OZDefault_CLIENT	USL

: User Security Logic



DataAction

- | | | |
|---|-------------|------------|
| - | Post – SOAP | DataModule |
| - | Post – SOAP | DataAction |
| - | Get | wsdl |

```

HttpRequest      "SOAPAction"      가      가      .
URL      "?wsdl"      "GET"      Response      wsdl
      URL      "POST"      SOAP
- GET
  http://localhost:8080/oz40/server/ODISERVICE?wsdl
- POST SOAP
  http://localhost:8080/oz40/server/ODISERVICE

```



```
ozservice.properties      "enable_webservice"
```

"true"

```
#-----  
# Main configuration of ozservice  
#-----  
  
enable_ozserver=true  
enable_webserve=true  
#
```

license

: 가

"TRUE"

```
...
USE-WEBSERVICE="TRUE"
...
```

- 가

■ OZIIISPage

- Preprocess

Prototype	public void Preprocess(System.Web.HttpRequest request, OZAttribute[] attr) throws OZWebServiceException		
Definition	oz.server.OZIIISPage	Preprocess	Overwrite
	SOAP Header	가	. Preprocess
	Exception	, SOAP Fault	가
Argument	<i>request</i>		
	<i>attr</i>	SOAP OZAttribute	Header
Exception	OZWebServiceException		

■ OZAttribute

- getName

Prototype	public String getName()
------------------	-------------------------

Definition	OZAttribute	가	.
-	getValue		
Prototype	public String	getValue()	
Definition	OZAttribute	가	.

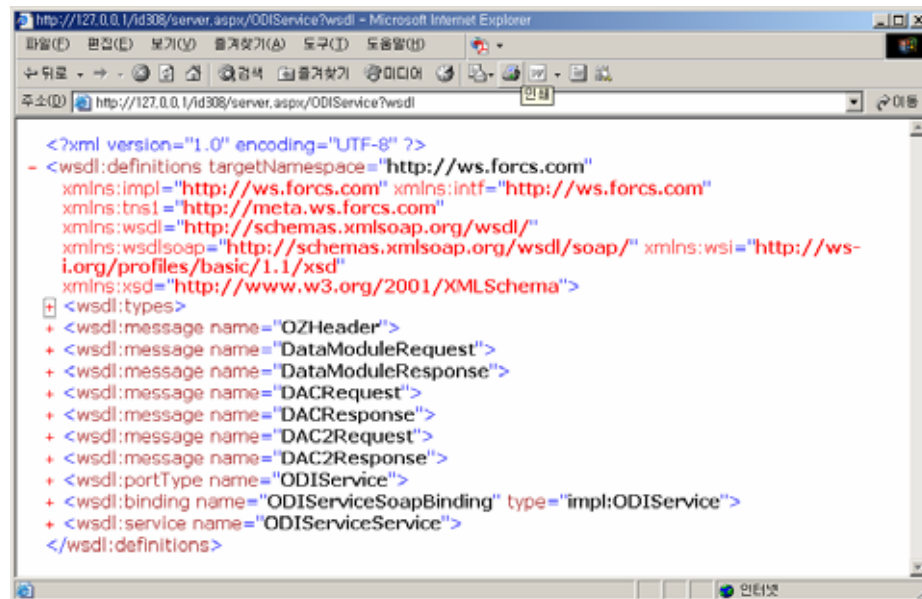
■ ODIService

-	requestDAC2		
Prototype	requestDAC2(data)		
	DataAction	가	.
Definition	:	"<FAULT>"	.
Argument	data	DataAction	

ODI DataAction

가 .

➤	"ozservice.properties"	.
	<pre>#----- # Main configuration of ozservice #----- enable_ozserver=true enable_webserver=true</pre>	
➤	"USE-WEBSERVICE"	"TRUE"
	가 license	.
➤	ODIService URL	ODIService
	wsdl (URL "	
	http://127.0.0.1/id308/server.aspx" , ODIService URL "	
	http://127.0.0.1/id308/server.aspx/ODIService?wsdl " .)	



가 ODIService wsdl
XML

➤ "OZAxisDataAction2Client.java"

```
package sample;

import java.io.ByteArrayOutputStream;
import java.io.FileInputStream;

import javax.xml.rpc.ServiceException;
import javax.xml.rpc.Stub;

import sun.misc.BASE64Encoder;

import com.forcs.ws.ODIService;
import com.forcs.ws.ODIServiceServiceLocator;
import com.forcs.ws.meta.Const_DAC;
import com.forcs.ws.meta.Const_FIELD;
import com.forcs.ws.meta.DataActionInfo;
import com.forcs.ws.meta.OZData;
import com.forcs.ws.meta.OZDataSet;
import com.forcs.ws.meta.Param;
import com.forcs.ws.meta.Record;
```

```
public class OZAxisDataAction2Client {

    public static final String _END_POINT_ADDRESS =
"http://127.0.0.1/oz40/server.aspx/ODIService";
    public static void main(String[] args) {
        System.out.println("Endpoint address = " + _END_POINT_ADDRESS);
        try {
            ODIService stub = (ODIService)createProxy();

            OZData data = new OZData();
            data.setODI_NAME("DACTest.odi");
            data.setCATEGORY("/REQ/258/");

            DataActionInfo[] info = new DataActionInfo[1];
            info[0] = new DataActionInfo();
            info[0].setSETNAME("DataSet");
            info[0].setType(Const_DAC.Insert);

            Param[] sources = new Param[7];
            sources[0] = new Param();
            sources[0].setName("name");
            sources[0].setType(Const_FIELD.VARCHAR);
            sources[0].setValue("Sample1");

            sources[1] = new Param();
            sources[1].setName("address");
            sources[1].setType(Const_FIELD.VARCHAR);
            sources[1].setValue("Sample1");

            sources[2] = new Param();
            sources[2].setName("birthday");
            sources[2].setType(Const_FIELD.DATE);
            sources[2].setValue("1980-09-02");

            sources[3] = new Param();
            sources[3].setName("job");
            sources[3].setType(Const_FIELD.VARCHAR);
            sources[3].setValue("Sample1");

            sources[4] = new Param();
            sources[4].setName("age");
            sources[4].setType(Const_FIELD.INTEGER);
            sources[4].setValue("1001");
```

```
sources[5] = new Param();
sources[5].setName("picture");
sources[5].setType(Const_FIELD.BINARY);

FileInputStream fis = new FileInputStream("me.jpg");
ByteArrayOutputStream baos = new
ByteArrayOutputStream();

byte[] buffer = new byte[2048];
int len = 0;
while((len=fis.read(buffer)) != -1) {
    baos.write(buffer, 0, len);
}
BASE64Encoder encoder = new BASE64Encoder();

sources[5].setValue(encoder.encode(baos.toByteArray()));
fis.close();
baos.close();

sources[6] = new Param();
sources[6].setName("picture_path");
sources[6].setType(Const_FIELD.VARCHAR);
sources[6].setValue("Image1.jpg");

info[0].setSource(sources);

data.setOZDATAActions(info);

//DataAction

OZData result = (OZData)stub.requestDAC2(data);
OZDataSet[] datas = result.getOZDATARESULT();
for(int i=0 ; i < datas.length ; i++) {
    Record[] record = datas[i].getRECORDS();
    for(int j=0 ; j < record.length ; j++) {
        String[] cols = record[j].getCOLS();
        for(int k=0 ; k < cols.length ; k++) {
            if(cols[k].length() >100) {
                continue;
            }
            System.out.println(cols[k]);
        }
    }
    System.out.println();
}
```