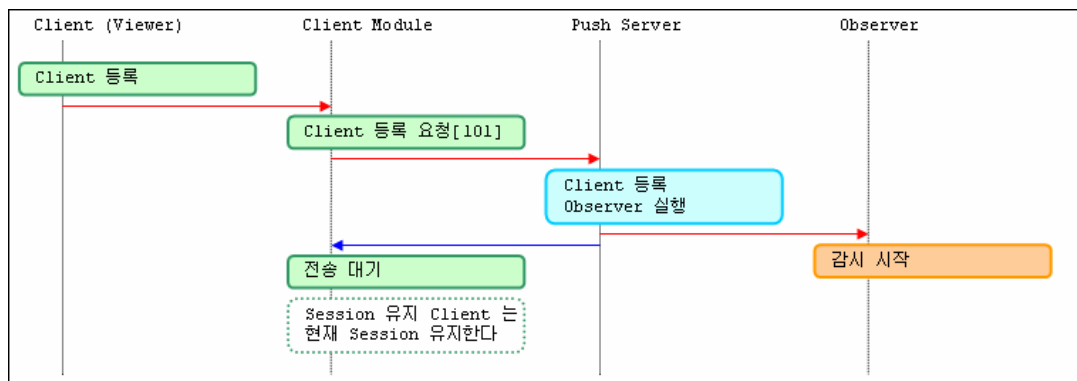


OZ Data Push Server Manual

Push	2
Push	4
Push	5
Push	13
Push	15

Push

Push (Daemon)
 , Push Push Observer가
 Push



- , Observer
- Session
- Thread Thread
- Observer ID 가
- Observer / /Session interval pushserver.xml
- Log4j

: Push 가 가

Observer

- Observer가 Queue를 사용하여 데이터를 받는다.
 - Observer가 sdm를 사용하여 데이터를 보낸다.
 - ObserverID를 사용하여 Interface를 제공한다.
- Observer : Observer "_ObserverImpl"

Client Module

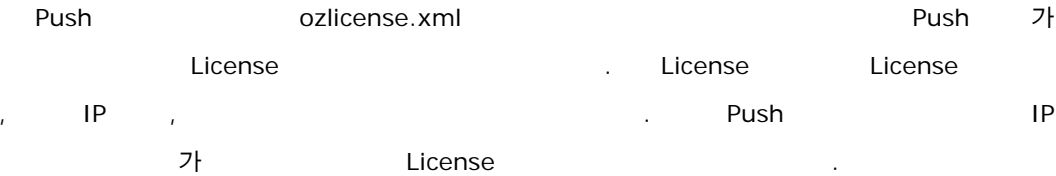
- Push를 제공한다.

Push

bin	ozpushcntrl.bat	(.bat) (.sh)
	ozpushcntrl.sh	Push
	ozpushstart.bat	(.bat) (.sh) Push
	ozpushstart.sh	
	ozpushstop.bat	(.bat) (.sh) Push
	ozpushstop.sh	
	OZServicePS.exe	
	OZPushServerInstallService.bat	NT
	OZPushServerUninstallService.bat	Push NT
	pushserver.ico	Push
conf	pushserver.properties	Push
	pushserver.xml	Push, session, transmission, Observer
lib	crimson.jar	XML
	log4j.jar	
	ozpush40.jar	Push
	ozsfw40.jar	
	parser.jar	XML
	xalan.jar	XML Xerces
	xerces.jar	XML Xerces
	xercesImpl.jar	XML Xerces
	xml-apis.jar	XML Xerces
license	ozlicense.xml	Push
logs	pushserver.log	Push

Push

License



Push

■ ozpushcntrl.bat

JRE Push
Windows JVM , UNIX
ozpushcntrl.sh JRE Path

```
@echo off
rem -----
rem
rem          OZ Push Server Contorl(OZA SHELL)
rem
rem
rem This script file written and tested under Windows 2000
rem
rem User should set following variables:
rem
rem JAVA_HOME      - Determines the version of Java used to start
rem                  OZ Server. This variable must point to the
rem                  root directory of a JDK or JRE installation.
rem                  for an up-to-date list of supported JVMs your platform.
rem MAX_MEMORY     - Maximum memory used by OZ Push Server. (The unit is mega-byte.)
rem MIN_MEMORY     - Minimum memory used by OZ Push Server. (The unit is mega-byte.)
rem -----
```

```
rem -----
rem   Set user-defined variables
rem -----

set JAVA_HOME=.. .. JRE
set MAX_MEMORY=256
set MIN_MEMORY=256
set JAVA_OPTION=

set OZPUSHSERVER_HOME=..
set OZLIBALL=%OZPUSHSERVER_HOME% lib

rem -----
rem   OZ Main Class
rem -----
set OZLIB=%OZLIBALL%  ozpush40.jar;%OZPUSHSERVER_HOME% conf ;

rem -----
rem   OZ Server Class
rem -----
set OZLIB=%OZLIB%;%OZLIBALL%  ozsfw40.jar

rem -----
rem   Library for Logging
rem -----
set OZLIB=%OZLIB%;%OZLIBALL%  log4j.jar

rem -----
rem   Library for XML
rem -----
set OZLIB=%OZLIB%;%OZLIBALL%  xalan.jar
set OZLIB=%OZLIB%;%OZLIBALL%  xercesImpl.jar
set OZLIB=%OZLIB%;%OZLIBALL%  xml-apis.jar
set OZLIB=%OZLIB%;%OZLIBALL%  parser.jar
set OZLIB=%OZLIB%;%OZLIBALL%  xerces.jar
set OZLIB=%OZLIB%;%OZLIBALL%  crimson.jar

rem -----
rem   User Library
rem -----
rem set OZLIB=%OZLIB%;%OZLIBALL%  sample.jar

echo %OZLIB%
```

```
if not "%1" == "-start" goto notStart
set JAVA_OPTION= %JAVA_OPTION% -Xms%MIN_MEMORY%m -Xmx%MAX_MEMORY%m
:notStart
%JAVA_HOME% bin java %JAVA_OPTION% -cp %OZLIB% oz.push.server.Console %1 %2 %3 %4
```

```

: MAX_MEMORY, MIN_MEMORY                                JVM
/                                     ,                   JAVA_OPTION
.                                     JAVA_OPTION

```

- `ozpushcntrl.sh`

JRE Push
Windows JVM , UNIX
ozpushcntrl.sh JRE Path .

```
#!/bin/sh
#-----
#
#           OZ Push Contorl.
#
# This script file written and tested under HP-UX
#
# User should set following variables:
#
# JAVA_HOME           - Determines the version of Java used to start
#                       OZ Server. This variable must point to the
#                       root directory of a JDK or JRE installation.
#                       for an up-to-date list of supported JVMs your platform.
# MAX_MEMORY          - Maximum memory used by OZ Server. (The unit is mega-byte.)
# MIN_MEMORY          - Minimum memory used by OZ Server. (The unit is mega-byte.)
# JAVA_OPTIONS        - On some platforms, certain java command-line options are
#                       recomanded when running OZ Server.
#
#-----
#
# -----
#   Set user-defined variables
# -----
#
JAVA_HOME=../../jre
```

```
MAX_MEMORY=256
MIN_MEMORY=128
JAVA_OPTION=-hotspot

OZPUSHSERVER_HOME=..
OZLIB=.:$OZPUSHSERVER_HOME/conf
OZLIB=$OZLIB:$OZPUSHSERVER_HOME/lib/ozpush40.jar

# -----
#           OZ Server Library
# -----
OZLIB=$OZLIB:$OZPUSHSERVER_HOME/lib/ozsfw40.jar

# -----
#           Library for Logging
# -----
OZLIB=$OZLIB:$OZPUSHSERVER_HOME/lib/log4j.jar

# -----
#           Library for XML
# -----
OZLIB=$OZLIB:$OZPUSHSERVER_HOME/lib/xalan.jar
OZLIB=$OZLIB:$OZPUSHSERVER_HOME/lib/xercesImpl.jar
OZLIB=$OZLIB:$OZPUSHSERVER_HOME/lib/xml-apis.jar
OZLIB=$OZLIB:$OZPUSHSERVER_HOME/lib/parser.jar
OZLIB=$OZLIB:$OZPUSHSERVER_HOME/lib/xerces.jar
OZLIB=$OZLIB:$OZPUSHSERVER_HOME/lib/crimson.jar

rem -----
rem           User Library
rem -----
rem set OZLIB=%OZLIB%;%OZLIBALL%  sample.jar

if [ "$1" != "-start" ]; then
    JAVA_OPTION=
else
    JAVA_OPTION="$JAVA_OPTION -ms$MIN_MEMORY"m
    JAVA_OPTION="$JAVA_OPTION -mx$MAX_MEMORY"m
fi

echo ""
echo $OZLIB
echo ""
```



```
$JAVA_HOME/bin/java $JAVA_OPTION -classpath $OZLIB oz.push.server.Console $1 $2 $3 $4
```

```

: MAX_MEMORY, MIN_MEMORY
/
,
JVM
JAVA_OPTION
JAVA_OPTION
.
.
```

■ pushserver.properties

Push

```
#-----
# Main configuration of push
#-----
path.oz.push.home=..
```

path.oz.push.home	Push (/ 가)

■ pushserver.xml

Push, session, transmission, Observer

```
<?xml version="1.0" encoding="EUC-KR"?>
<ozpushserver port="8088">
  <log priority="DEBUG" path="../logs/">
    <logger type="Console" aync="false" />
  <!--
    DailyRollingFile
    <logger type="DailyRollingFile" filename="pushserver.log" append="true" immediateFlush="true"
datepattern="yyyy-MM-dd" />
  -->
  <logger type="RollingFile" filename="pushserver.log" append="true" immediateFlush="true"
maxbackupindex="5" maxFileSize="10KB" />
</log>
<session interval='5000'/>
<transmission multi='false'/>
<observers>
<!--
```

```

    가      observer
    <observer name="OB1" classname="sample.observer.OB1" checkInterval="5000" />
    <observer name="OB2" classname="sample.observer.OB2" checkInterval="5000"/>
-->
    </observers>
</ozpushserver>#-----
# Main configuration of ozpushserver
#-----

```

Element		
ozpushserver	port	Push . (:8088)
log	priority	. (:DEBUG)
		FATAL Log level 가 , 가 log .
		ERROR log level , log
		INFO "ERROR" level log log .
		DEBUG "ERROR", "INFO" level log log
	path	. (: %OZPushHome%\log)
logger	type	logger , . (:Console) : logger Console RollingFile Console DaillyRollingFile
		Console .
		RollingFile ex) pushserver.log, pushserver.log.1, pushserver.log.2, ...

		DaillyRolling File	(DatePattern) . ex) pushserver.log, pushserver.log. , pushserver.log. , ...
	async	logger . (Console : false)
	filename	logger . (RollingFile DaillyRollingFile : pushserver.log)
	append	logger 가 . (RollingFile DaillyRollingFile : true)
	immediaeFlus h	logger . (RollingFile DaillyRollingFile : false)
	datepattern	logger . (DaillyRollingFile "DatePattern" : YYYY-MM-DD)
	maxBackupIn dex	logger . (RollingFile Backup 가 : 5)
	maxFileSize	logger . (RollingFile : 1MB)
session	interval	. (: 5000)	
transmission	multi	. (: false)	
Observer	name	Observer .	
	classname	Observer .	
	checkInterval	. (: 5000)	

- DatePattern

yyyy-MM		6 12 pushserver.log pushserver.log.2005-06 pushserver.log .
yyyy-ww	()	가 , 1 12 pushserver.log pushserver.log.2005-01 pushserver.log .
yyyy-MM-dd	()	7 1 pushserver.log pushserver.log.2005-07-01 pushserver.log .
yyyy-MM-dd-HH		7 1 10 pushserver.log pushserver.log.2005-07-01-09 pushserver.log .

Push

■ -help

) ozpushcntrl -help

■ -obinfo

ObserverID

ObserverID | ObserverName | ObserverClassName | client

) ozpushcntrl -obinfo ip: 127.0.0.1 port: 8088 id: ObserverID

■ -oblist

ip Observer

ObserverID | ObserverName | ObserverClassName | client

) ozpushcntrl -oblist ip: 127.0.0.1 port: 8088

■ -obruninfo

Observer

ObserverID | ObserverName | ObserverClassName | client

) ozpushcntrl -obruninfo ip: 127.0.0.1 port: 8088

■ -obstop

ObserverID 가 Observer

) ozpushcntrl -obstop ip: 127.0.0.1 port: 8088 id: ObserverID

■ -stop

OZ Push

) ozpushcntrl -stop ip: 127.0.0.1 port: 8088

- **-usage**

start

) ozpushcntrl -usage

- **-version**

Push

) ozpushcntrl -version -ip:127.0.0.1 -port:8080

Push

Push

■ DataModule.StartPush

Prototype	BOOL StartPush(string ObserverIP, integer ObserverPort, string Observername)		
	Push		
Definition	:	가	
		SynchronizeToDataSet	true
Argument	ObserverIP	Push	IP
	ObserverPort	Push	Port
	Observername	Push	Observer

■ DataModule.EndPush

Prototype	BOOL EndPush()		
Definition	Push		

Observer

가 Observer 가

1) 가 가

가 Push Server

2) ODI , 가

- Observer 가 ("OB1", "OB2", "OB3")
Observer가 pushsample.jar .)
- pushsample.jar Push Server가 /lib
- Push Server가 /bin ozpushcntrl.bat

```
rem -----
rem      User Library
rem -----
set OZLIB=%OZLIB%;%OZLIBALL% pushsample.jar
```

- Push Server가 /conf pushserver.xml
Observer

```
<?xml version="1.0" encoding="EUC-KR"?>
<ozpushserver port="8088">
  <log priority="DEBUG" path="../logs/">
    <logger type="Console" aync="false" />
  <!--
    DailyRollingFile
    <logger type="DailyRollingFile" filename="logfile.log" append="true" immediateFlush="true"
datepattern="yyyy-MM-dd" />
  -->
  <logger type="RollingFile" filename="PushServer.log" append="true" immediateFlush="true"
maxbackupindex="5" maxFileSize="10KB" />
```



```
</log>
<session interval='5000'/>
<transmission multi='false'/>
<observers>
  <observer name="OB1" classname="sample.observer.OB1" checkInterval="5000" />
  <observer name="OB2" classname="sample.observer.OB2" checkInterval="5000"/>
  <observer name="OB2" classname="sample.observer.OB2" checkInterval="5000"/>
</observers>
</ozpushserver>
```

OZ Application Viewer OZ Push Server

➤ Board ozcar.odi 가 Table Table

➤ Board Button 가 Button "OnClick"
가

▪ Button1(StartPush)

```
//Push Server Push Server
var dm = _GetDataManager.GetDataModule("ozcar");
//Push Server IP, Port, Observer Name
var push = dm.StartPush("127.0.0.1", "8088", "OB1");
```

▪ Button2(EndPush)

```
// Push Server
var dm = _GetDataManager.GetDataModule("ozcar");
var push = dm.EndPush();
```

➤ [] - []



StartPush EndPush

- ozcar.odi