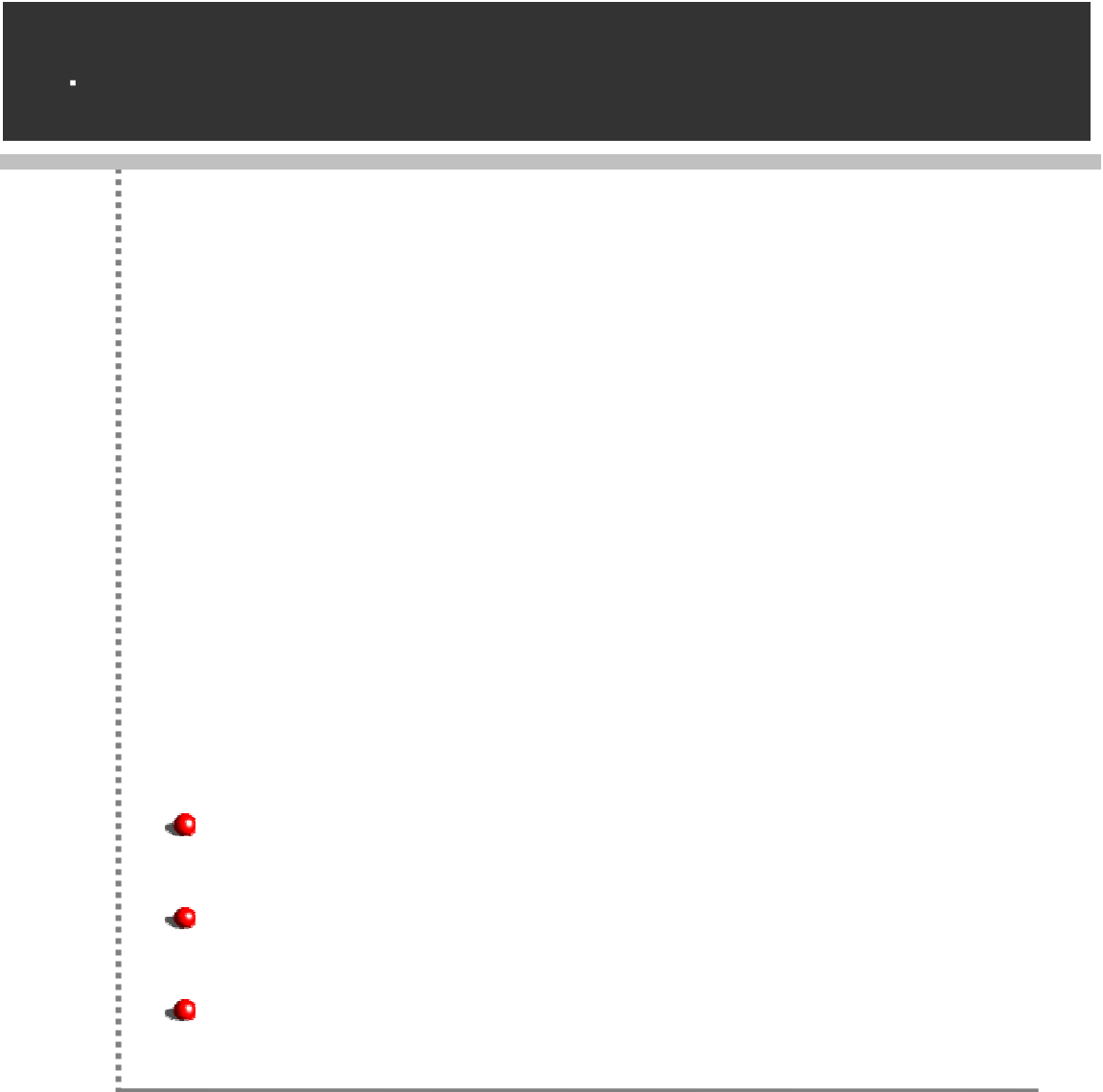
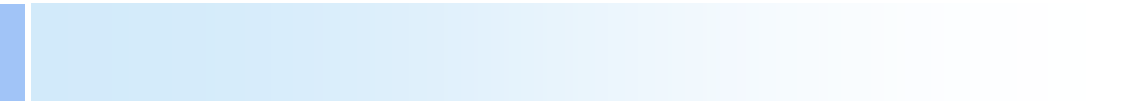


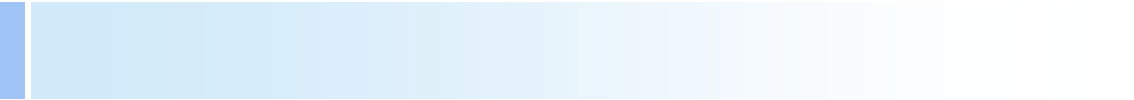
|         |                             |           |
|---------|-----------------------------|-----------|
| •       | .....                       | <b>3</b>  |
|         | .....                       | 4         |
|         | .....                       | 4         |
|         | .....                       | 6         |
| •       | .....                       | <b>7</b>  |
|         | .....                       | 8         |
|         | .....                       | 8         |
|         | .....                       | 8         |
| EXE     | .....                       | 9         |
| EXE     | .....                       | 9         |
| EXE     | .....                       | 9         |
| ActiveX | .....                       | 10        |
| ActiveX | .....                       | 10        |
| ActiveX | .....                       | 11        |
| ActiveX | .....                       | 14        |
| ActiveX | .....                       | 15        |
| ActiveX | .....                       | 24        |
| ActiveX | .....                       | 26        |
| ActiveX | .....                       | 27        |
| •       | .....                       | <b>31</b> |
|         | .....                       | 32        |
|         | (repository_agent) .....    | 36        |
|         | (odi) .....                 | 39        |
|         | (ozadoc, application) ..... | 46        |
|         | .....                       | 52        |

|                   |       |          |
|-------------------|-------|----------|
| ·                 | ..... | 55       |
| EXE               | ..... | 56       |
| ActiveX           | ..... | 57       |
|                   | ..... | 57       |
|                   | ..... | 58       |
|                   | ..... | 60       |
| Appendix 1.       | 가     | ..... 61 |
| Appendix 2.       |       | ..... 67 |
| Visual Basic .NET | ..... | 68       |
| C# .NET           | ..... | 73       |





( )



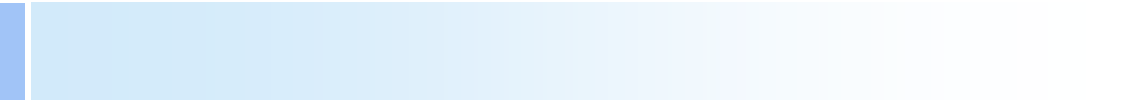
가

가

.

Visual Basic .NET, C# .NET

.



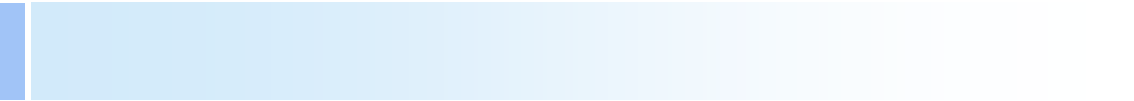
| Manual          | Description |
|-----------------|-------------|
| Getting Started |             |
| 가               |             |
| 가               |             |
| 가               |             |
| 가               | 가           |
|                 |             |



EXE



ActiveX



, OZA

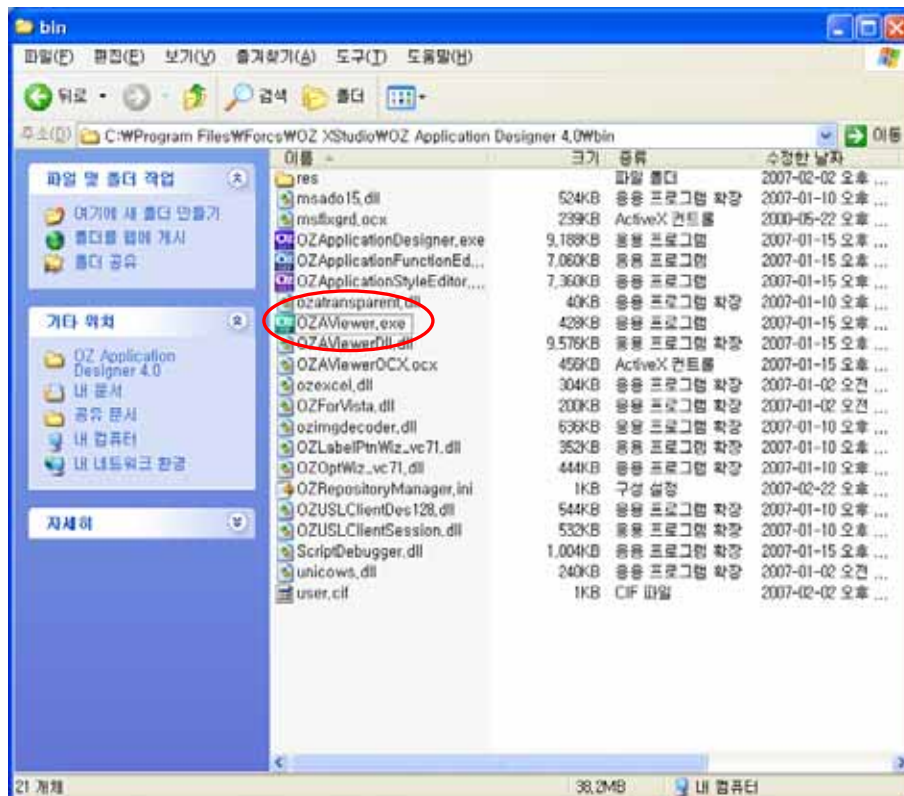
|         |         |     |                    |     |
|---------|---------|-----|--------------------|-----|
|         |         | EXE | ActiveX            |     |
| EXE     | EXE     |     | "OZAViewer.exe"    | OZA |
| ActiveX | ActiveX |     | "OZAViewerOCX.ocx" |     |
| OZA     |         |     |                    |     |



EXE

EXE

EXE



EXE

EXE

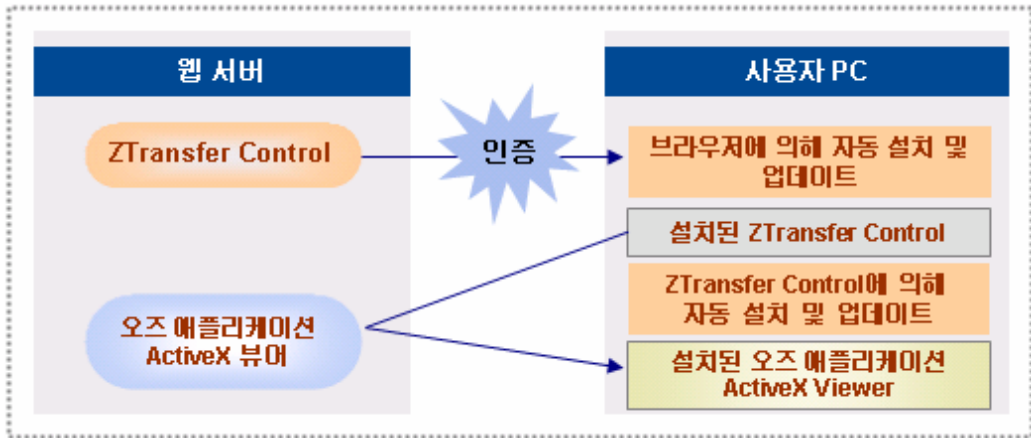
"OZViewer.exe"

: EXE

ActiveX

ActiveX

ActiveX  
PC  
가  
"ZTransferX Control" PC  
ZTransferX Control  
가  
ZTransferX Control PC  
ZTransferX Control  
가



: ZTransferX Control

ZTransferX Control ActiveX  
ZTransferX Control 가 PC  
ActiveX ZTransferX Control PC IDF  
IDF  
ZTransferX ActiveX cabinet(\*.cab)  
ZTransferX 1  
ZTransferX 가

## ActiveX

PC

- ## ActiveX

- ```
<param name="download.server"
value="http://127.0.0.1/OZAppli cationVi ewer">
```

- ```
<param name="download.port" value="80">
```

- ```
<param name="download.instruction" value="ozavier.idf">
```

- ActiveX (IDF )

---

가 "127.0.0.1" , 가 "80" ,  
"OZApplicationViewer"

**Example** "ozaviewer.idf" ActiveX  
<param name="download.instructionURL"  
value="http://127.0.0.1:80/OZApplicationViewer/ozaviewer.idf">

---

ActiveX (IDF ) 가  
"download.instructionURL" 가  
. , ActiveX IDF 가  
"download.instructionURL"  
"download.instructionURL" "download.instruction"  
"download.instructionURL" 가 . , ActiveX  
"download.instructionURL" IDF  
.  
PC IDF "download.instruction"  
. , "download.instruction"  
"download.instructionURL"  
.

- download.quiet

|                   |                                            |
|-------------------|--------------------------------------------|
| <b>Definition</b> | ActiveX 가                                  |
| <b>Value</b>      | <i>true</i><br><i>false</i> ( )            |
| <b>Example</b>    | <param name="download.quiet" value="true"> |

### ■ install.*parametername*

ActiveX PC .

- install.base

|                   |                                                      |
|-------------------|------------------------------------------------------|
| <b>Definition</b> | ActiveX PC .                                         |
| <b>Example</b>    | <param name="install.base" value="<PROGRAMS>/Forcs"> |

- install.namespace

---

'install.base'

:

**Definition**

ActiveX      PC  
ActiveX      가  
ActiveX      ActiveX

---

**Example**      <param name="install.namespace" value="F00D2005">

---



ActiveX

- maxconnect

---

가

:

**Definition**

:

, Administrator

---

**Example**      <param name="maxconnect" value="100">

---

- useprogress

---

**Definition**      ActiveX

---

**Value**      *true*      (      )

---

*false*

---

**Example**      <param name="useprogress" value="true">

---

## ActiveX

ActiveX

| ozviewer.lbf              | ActiveX                           |
|---------------------------|-----------------------------------|
| ozviewer_ _ 가<br>.message | ActiveX                           |
| ozaexport.zip             | DLL zip                           |
|                           | ozexcel.dll                       |
| ozaresource.zip           | ActiveX zip                       |
|                           | av_error_msg_ _ 가 .xml            |
|                           | ex) av_error_msg_en_us.xml        |
|                           | server_error_ms<br>g_ _ 가<br>.xml |
|                           | ex) server_error_msg_en_us.xml    |
|                           | MultiLanguageList.xml             |
| ozauser.zip               | USL zip                           |
|                           | OZUSLClientDes128.dll             |
|                           | OZUSLClientSession.dll            |
|                           | USL                               |
| ozviewer.zip              | ActiveX zip                       |
|                           | OZAVviewer.exe                    |
|                           | OZAVviewerDll.dll                 |
|                           | ActiveX                           |
|                           | OZForVista.dll                    |
|                           | Windows Vista                     |
| ozaviewerocx.zip          | ActiveX Control zip               |
|                           | OZAVviewerOCX.ocx                 |
|                           | ActiveX OCX                       |
| ozsystem.zip              | Microsoft Layer of Unicode zip    |
|                           | unicows.dll                       |
|                           | Microsoft Layer of Unicode        |
| ZTransferX.cab            | ActiveX                           |
|                           | ZTransferX.inf                    |
|                           | ZTransferX Control                |
|                           | ZTransferX.ocx                    |
|                           | ZTransferX Control OCX            |
|                           | ZtransferForVista.dll             |
|                           | Windows Vista                     |

|  |              |  |
|--|--------------|--|
|  | ozverify.dll |  |
|--|--------------|--|

## ActiveX

- ActiveX                      ActiveX                      ,                      DLL                      , OCX  
IDF                      (Install Direction File)                      , IDF                      ActiveX  
"ozviewer.idf"                      .

- IDF                      ActiveX  
                    ,                      ,                      .  
EntryVersion                      가                      Entry                                           Entry                      가  
                    . " ; "

| Header |     |  |   |
|--------|-----|--|---|
| [IDF]  |     |  |   |
| IDF    | 1 = |  | 1 |
|        | ... |  |   |
| IDF    | n = |  | n |

| Body |     |     |   |   |
|------|-----|-----|---|---|
| [    | 1]  |     |   |   |
|      | 1   | 1 = | 1 | 1 |
|      | ... |     |   |   |
|      | 1   | n = | 1 | n |
| [    | 2]  |     |   |   |
|      | 2   | 1 = | 2 | 1 |
|      | ... |     |   |   |
|      | 2   | n = | 2 | n |
|      | ... |     |   |   |
| [    | n]  |     |   |   |
|      | n   | 1 = | n | 1 |
|      | ... |     |   |   |
|      | n   | n = | n | n |

■ Header

| Header  | IDF |  |  |  |  |
|---------|-----|--|--|--|--|
| ActiveX |     |  |  |  |  |

- version

|                   |                                 |             |   |
|-------------------|---------------------------------|-------------|---|
| <b>Definition</b> | IDF                             | RootVersion | . |
| <b>Example</b>    | version = 4000, 2007, 0214, 100 |             |   |

- formatversion

|                   |                           |
|-------------------|---------------------------|
| <b>Definition</b> | IDF<br>가 , IDF            |
| <b>Example</b>    | FormatVersi on=1, 0, 0, 1 |

- assureall

|            |             |
|------------|-------------|
| Definition | .           |
| Value      | <i>true</i> |



|                    |                                                   |                                                  |
|--------------------|---------------------------------------------------|--------------------------------------------------|
|                    | <i>false</i>                                      | (    )                                           |
| <b>Example</b>     | AssureAll=false                                   |                                                  |
| <hr/>              |                                                   |                                                  |
| - checkrootversion |                                                   |                                                  |
| <b>Definition</b>  | RootVersion                                       |                                                  |
| <b>Value</b>       | <i>true</i>                                       | RootVersion<br>Entry                             |
|                    | <i>false</i>                                      | RootVersion                      Entry<br>(    ) |
| <b>Example</b>     | checkrootversion=false                            |                                                  |
| <hr/>              |                                                   |                                                  |
| - messagefile      |                                                   |                                                  |
| <hr/>              |                                                   |                                                  |
| <b>Definition</b>  | 가 " "<br>-                      - 가 .message"<br> |                                                  |

|                |                               |
|----------------|-------------------------------|
| <b>Example</b> | <code>msgonerror=false</code> |
|----------------|-------------------------------|

- stoponerror

|                   |                                   |
|-------------------|-----------------------------------|
| <b>Definition</b> | 가 가                               |
| <b>Value</b>      | <i>true</i><br><i>false</i> 가 ( ) |
| <b>Example</b>    | <code>stoponerror=false</code>    |



**Body**

Body

Entry

-

|                   |                                                                                                      |
|-------------------|------------------------------------------------------------------------------------------------------|
| <b>Definition</b> | (Entry) "[ ]" ()                                                                                     |
|                   | [ ]                                                                                                  |
|                   | Locale<br>가                                                                                          |
| <b>Value</b>      | [ (auto)] _KOR_KOR.zip,<br>_KOR.zip, .zip                                                            |
|                   | 가<br>[ (code)] Windows 9x(98,98SE,ME)<br>_ANSI.zip , Windows NT(NT, 2000, XP, 2003<br>) _UNICODE.zip |
| <b>Example</b>    | "ozviewerocx.zip"<br>[ozviewerocx]                                                                   |

- entryversion

|                   |                                                 |
|-------------------|-------------------------------------------------|
| <b>Definition</b> | (Entry)                                         |
| <b>Example</b>    | <code>EntryVersion=4000, 2007, 0214, 100</code> |

- file

**Definition**

**Example** file=ozaviewer.ocx.zip

- entry

**Definition** (Entry)

**Example** entry=0ZAViewerOCX.ocx

- compress

zip

:"update.ini" "param.oz"  
PC  
compress=no

**Definition**

```
[ini]
entryversion=4000, 2007, 0227, 200
file= update.ini
compress = no
destdir = <THI S>/bin/update

[param]
entryversion=4000, 2007, 0227, 200
file= param.oz
compress = no
destdir = <THI S>/bin
```

update.ini, param.oz 가 ,

**Example** compress=zip

- clsid

|                   |                                                |
|-------------------|------------------------------------------------|
| <b>Definition</b> | Class ID                                       |
| <b>Example</b>    | cl si d={907A00F3-7390-4EF2-931B-360546587804} |

- command

|                   |                                   |
|-------------------|-----------------------------------|
| <b>Definition</b> | Entry                             |
|                   | <i>RegisterServer</i> 'Entry='    |
|                   | <i>UnRegisterServer</i> 'Entry='  |
| <b>Value</b>      | <i>Execute</i> 'Entry='           |
|                   | <i>ExecuteAtDownload</i> "Entry=" |
|                   | <i>Delete</i> 'Entry='            |
| <b>Example</b>    | command=RegisterServer            |

- destdir

|                   |                                                                                                                                                                                                 |
|-------------------|-------------------------------------------------------------------------------------------------------------------------------------------------------------------------------------------------|
|                   | '\ ' 가<br>:                                                                                                                                                                                     |
| <b>Definition</b> | <ul style="list-style-type: none"> <li>▪ &lt;THIS&gt; : ZTransferX HTML<br/>"install.base/install.namespace"</li> <li>▪ &lt;SYSTEM&gt; :</li> <li>▪ &lt;PROGRAMS&gt; : Program Files</li> </ul> |
| <b>Example</b>    | destdir=c:/temp → c:/temp<br>destdir=<SYSTEM>/project<br>→ project                                                                                                                              |

- AutoRunEnable

|                   |                             |
|-------------------|-----------------------------|
| <b>Definition</b> |                             |
| <b>Value</b>      | <i>true</i><br><i>false</i> |

---

**Example**      AutoRunEnable=true

---

- AutoRunExtention

---

**Definition**

---

**Example**      AutoRunExtensi on=ozu

---

- AutoRunFileName

---

**Definition**      AutoRunExtension      가

---

**Example**      AutoRunFi l eName=OZAVi ewer. exe

---

- comparefile

---

**Definition**

---

**Example**      comparefi l e=uni cows. dl l

---

- compareoption

---

**Definition**      comparefile

---

**Value**      *exist*      (

---

**Example**      compareopti on=exi st

---

- shortcutfilename

---

가      "destdir"

---

**Definition**      :      가      "shortcutfilename"      가      가

---

|                |                               |
|----------------|-------------------------------|
| <b>Example</b> | shortcutfilename=ozviewer.exe |
|----------------|-------------------------------|

- shortcutdisplayname

|                   |   |   |   |   |     |
|-------------------|---|---|---|---|-----|
|                   | 가 | , | 가 | . |     |
| <b>Definition</b> | : |   |   |   | 가 가 |

|                |                                           |
|----------------|-------------------------------------------|
| <b>Example</b> | shortcutdisplayname=OZ Application Viewer |
|----------------|-------------------------------------------|

- startprogramname

|                   |   |   |     |
|-------------------|---|---|-----|
|                   | 가 | . |     |
| <b>Definition</b> | : |   | 가 가 |

|                |                                               |         |                         |
|----------------|-----------------------------------------------|---------|-------------------------|
|                | "                                             | /Forcs" | "OZ Application Viewer" |
| <b>Example</b> | 가                                             |         |                         |
|                | startprogramname=/FORCS/OZ Application Viewer |         |                         |

- shortcuticonname

|  |   |   |        |
|--|---|---|--------|
|  | 가 | . |        |
|  |   |   | (.ico) |

|                   |   |        |
|-------------------|---|--------|
| <b>Definition</b> | • | 가 가    |
|                   | • | 가      |
|                   |   | "file" |

|                |   |                                  |
|----------------|---|----------------------------------|
|                | : | shortcuticonname=c:/temp/oza.ico |
|                | : | "destdir"                        |
| <b>Example</b> |   | shortcuticonname=/res/oza.ico    |

- SleepAfterExecute

|                   |                                                                                                                                                     |         |
|-------------------|-----------------------------------------------------------------------------------------------------------------------------------------------------|---------|
|                   | Entry                                                                                                                                               | 가       |
|                   | ZTransfer                                                                                                                                           | .       |
| <b>Definition</b> | <ul style="list-style-type: none"> <li>IDF command Execute,</li> <li>ExecuteAtDownload</li> <li>"SleepAfterExecute"</li> <li>ZTransfer 가</li> </ul> |         |
|                   | 0                                                                                                                                                   | ( )     |
| <b>Value</b>      | 1                                                                                                                                                   | 가       |
|                   |                                                                                                                                                     | ( : ms) |
| <b>Example</b>    | 5                                                                                                                                                   |         |
|                   | SleepAfterExecute=5000                                                                                                                              |         |

■

```
[IDF]
version = 4000, 2007, 0214, 100
FormatVersion=1, 0, 0, 1
checkrootversion=false
stoponerror=false
msgonerror=false
AssureAll=false
messageFile = ozviewer.message
; license=please write down license key information

; copy dlls
[ozviewer]
EntryVersion=4000, 2007, 0214, 100
file=ozviewer.zip
compress = zip
destDir = <THIS>/bin
AutoRunEnable=true
AutoRunExtension=ozu
AutoRunFileName=OZAVIEWER.exe
; shortcutfilename=ozviewer.exe
; shortcutdisplayname=OZ Application Viewer
; startprogramname=/FORCS/OZ Application Viewer
; shortcuticonname=ozviewer.ico
; SleepAfterExecute=0

; copy & register dll files for export
[ozaexport]
EntryVersion=4000, 2007, 0214, 100
file=ozaexport.zip
```

```
entry=ozexcel.dll
clsid={BF0F27D8-C7E0-4D54-B99F-8009A907BB0F}
compress=zip
command=RegisterServer
destDir=<THI S>/bin

; register ocx
[ozaviewerocx]
EntryVersion=4000, 2007, 0214, 100
file=ozaviewerocx.zip
entry=OZAVIEWEROCX.ocx
compress=zip
clsid={907A00F3-7390-4EF2-931B-360546587804}
command=RegisterServer
destDir=<THI S>/bin

; copy dlls
[ozaresource]
EntryVersion=4000, 2007, 0214, 100
file=ozaresource.zip
compress=zip
destDir=<THI S>/bin/res

; copy system files
[ozsystem]
entryversion=4000, 2007, 0214, 100
file= ozsystem.zip
compress=zip
comparefile=unicows.dll
compareoption=exist
destdir=<IE>, <THI S>/bin

; copy user files
[ozuser]
entryversion=4000, 2007, 0214, 100
file=ozuser.zip
compress=zip
destdir=<THI S>/bin
```

## ActiveX





ActiveX

PC

- download.server
- download.port
- download.instruction
- install.base
- install.namespace



- ztransferx.js

```
var ZTransferXObjectElement = document.createElement(' <OBJECT width="0"
height="0" ID="ZTransferX" CLASSID="CLSID: C7C7225A-9476-47AC-B0B0-
FF3B79D55E67"
codebase="http://127.0.0.1/CustomNameSpace/ZTransferX.cab#version=2,1,0,3">
</OBJECT>');
var ZTransferXParamElement1 = document.createElement(' <PARAM
NAME="download.Server" VALUE="http://127.0.0.1/CustomNameSpace/">');
var ZTransferXParamElement2 = document.createElement(' <PARAM
NAME="download.Port" VALUE="80">');
var ZTransferXParamElement3 = document.createElement(' <PARAM
NAME="download.Instruction" VALUE="ozviewer.idf">');
var ZTransferXParamElement4 = document.createElement(' <PARAM
NAME="install.Base" VALUE="<PROGRAMS>/Forcs">');
var ZTransferXParamElement5 = document.createElement(' <PARAM
NAME="install.Namespace" VALUE="CustomNameSpace">');

ZTransferXObjectElement.appendChild(ZTransferXParamElement1);
ZTransferXObjectElement.appendChild(ZTransferXParamElement2);
ZTransferXObjectElement.appendChild(ZTransferXParamElement3);
ZTransferXObjectElement.appendChild(ZTransferXParamElement4);
ZTransferXObjectElement.appendChild(ZTransferXParamElement5);

OZEmbedControlLocation.appendChild(ZTransferXObjectElement);
```

- install.html

```
<HTML>
<HEAD>
  <title>Application Viewer Install</title>
</HEAD>
<BODY leftmargin="0" topmargin="0">
  <div id="OZEmbedControlLocation">
```

```
<script id="ZTransferX" src="ztransferx.js"></script>
</div>
</BODY>
</HTML>
```

## ActiveX

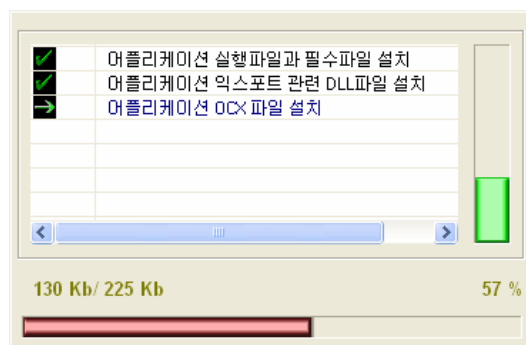
ActiveX



- ActiveX (IDF )
- ActiveX
- ActiveX HTML HTML

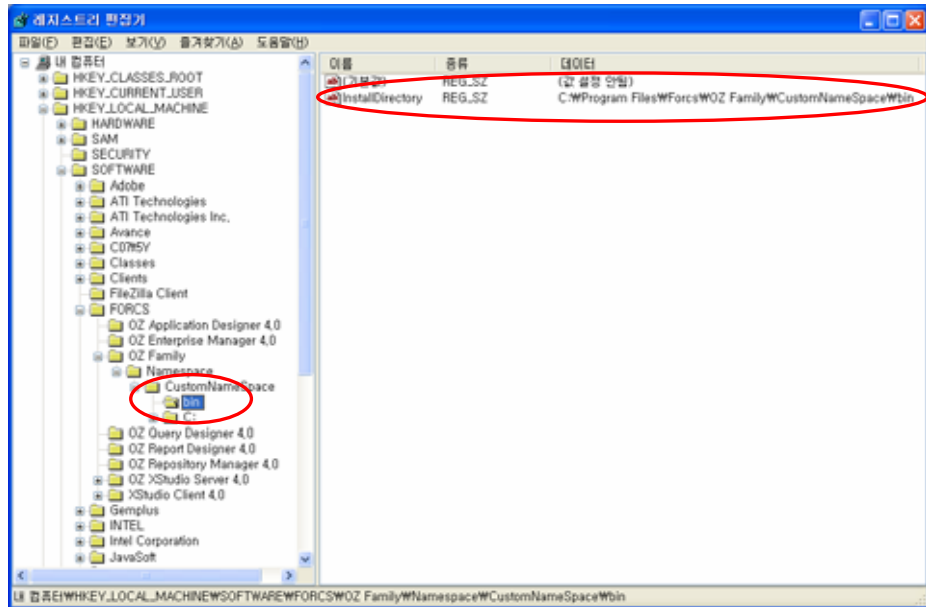


- ActiveX 가 HTML
- ZTransferX Control 가 [ ] ZTransferX Control
- ActiveX 가



- ActiveX 가
- 
- "install.base" "install.namespace"
- ActiveX
- 
- "HKEY\_LOCAL\_MACHINE\SOFTWARE\FORCS

\OZ Family\Namespace\ "install.namespace"  
 가 bin "InstallDirectory"  
 "OZViewerOCX.ocx" 가 .

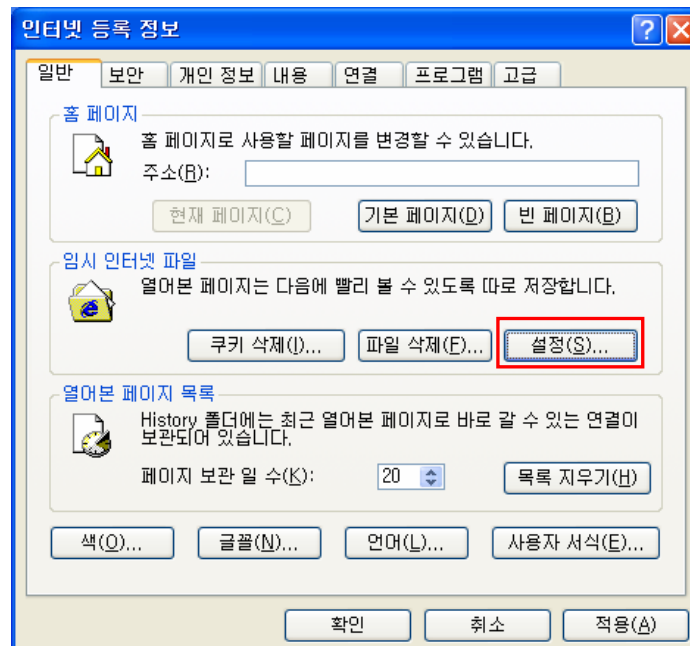


## ActiveX

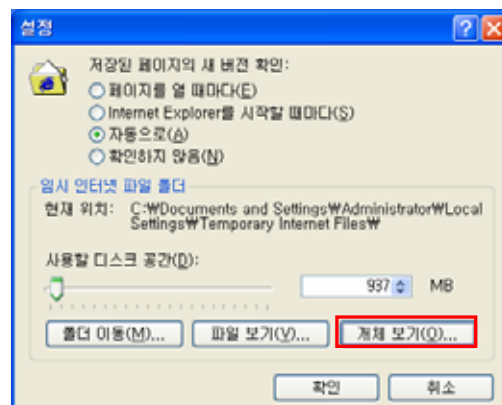
ActiveX                      ZTransferX Control                      ActiveX

### ■ ZTransferX Control

- Internet Explorer    [    ] - [    ]    [    ]    "  
                                  [    ]



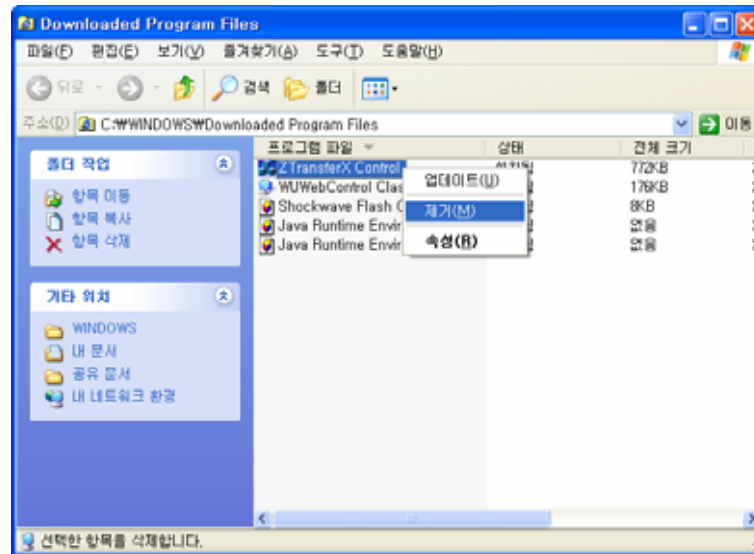
[ ]



"ZTransferX Control"

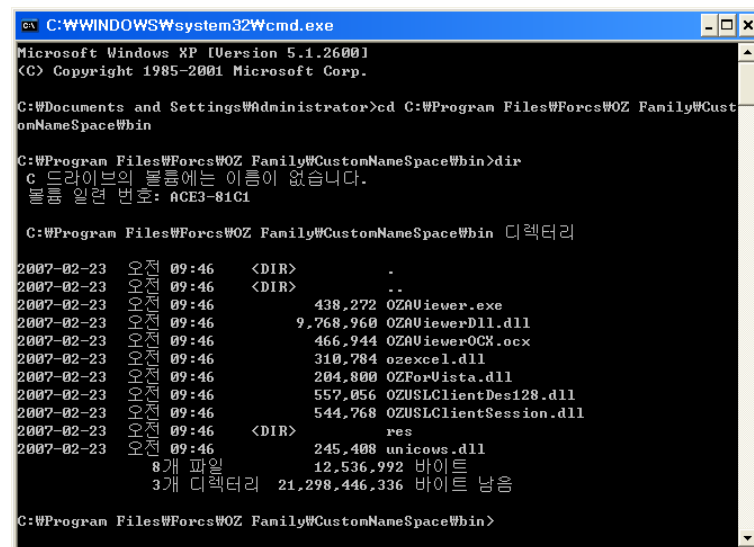
[ ]

ZTransferX Control

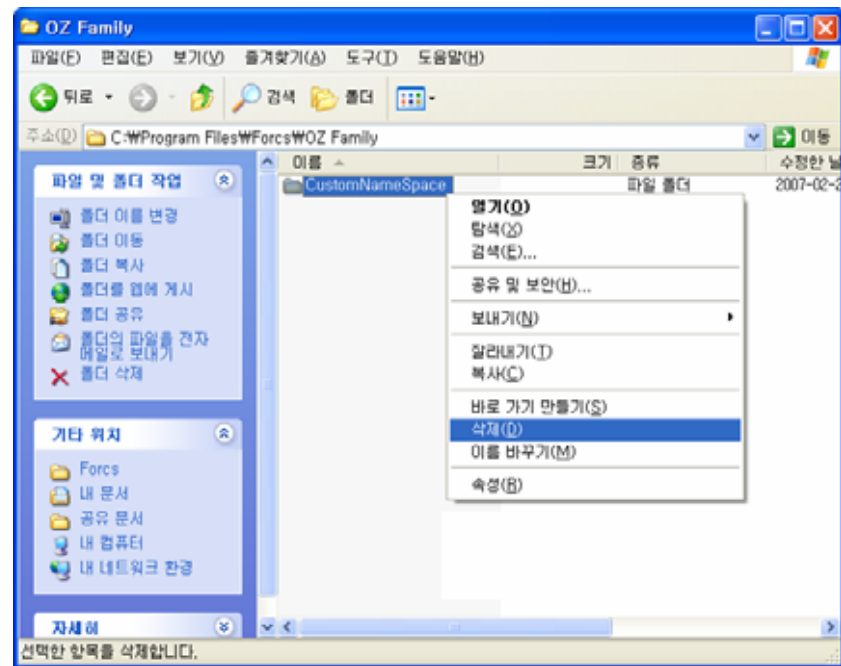


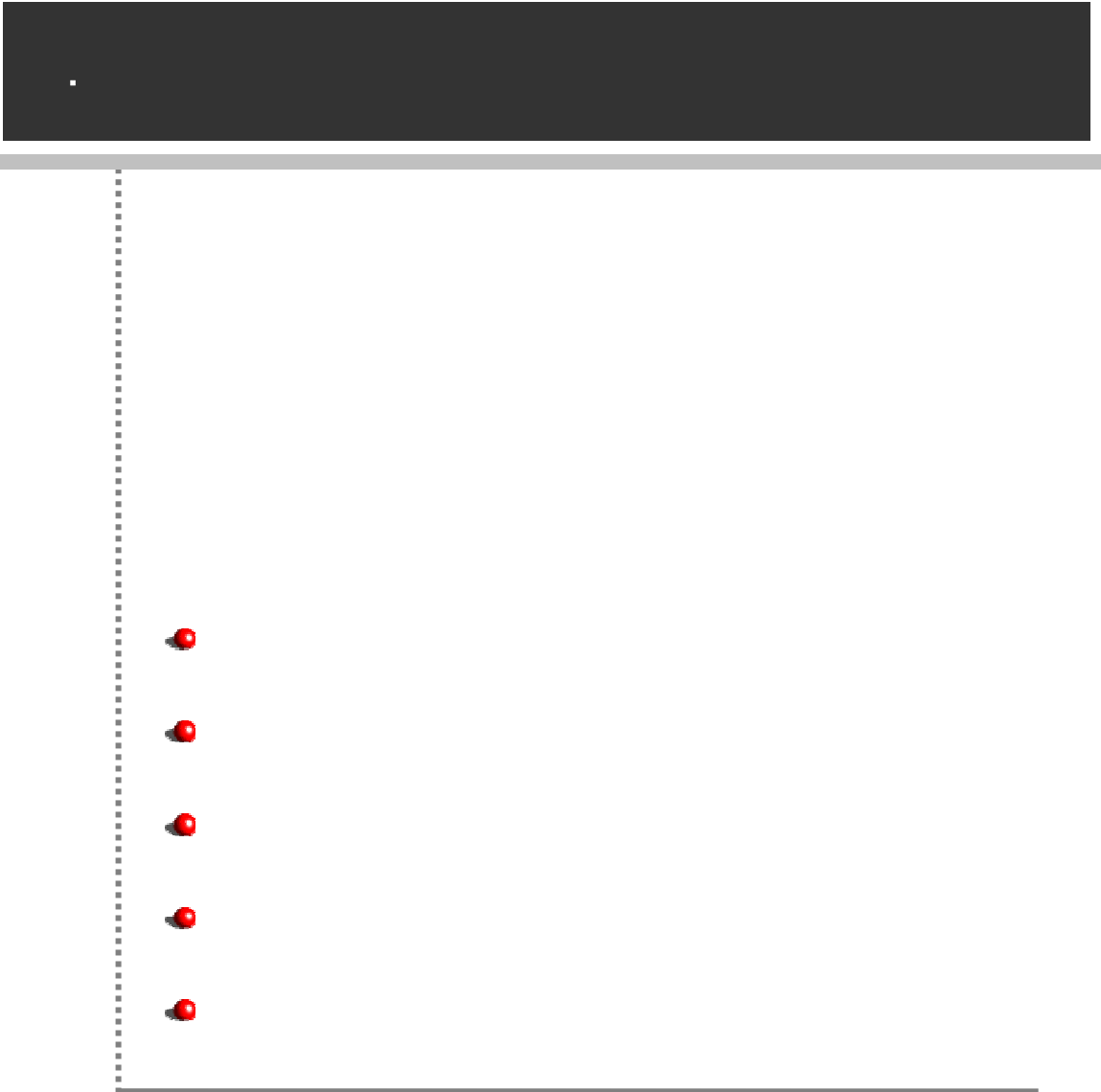
#### ■ ActiveX

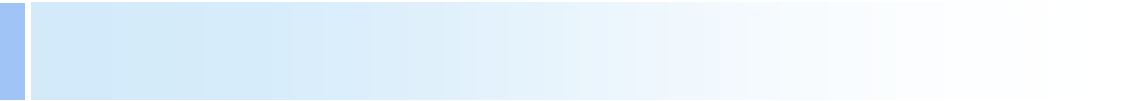
- "regsvr32 /u" ActiveX (cmd.exe)
- [ ] ActiveX "InstallDirectory"
  - "OZAVIEWEROCX.ocx"



- "regsvr32 /u OZAVIEWEROCX.ocx"
- ActiveX 가







, OZA

[. ] [. ] ...

ex) repository\_agent.type  
repository\_agent.ozserver.server

"ozadoc.autoadjustsize" "OZADoc.AutoAdjustSize"

"true", "false", , HTTP , OZURL

<param name="ozadoc.autoadjustsize" value="true">

: OZURL  
OZURL OZ Application

- ozp:/// ex) osp:///main.jpg  
ozp:// / ex) osp://images/main.jpg



■

file:// / ex) file://C:/title.gif

.

.

:

ODI : ODI , ODI , ODI

:

■

|                                    | ActiveX | EXE |
|------------------------------------|---------|-----|
| repository_agent.type              |         |     |
| repository_agent.ozserver.server   |         |     |
| repository_agent.ozserver.port     |         |     |
| repository_agent.ozserver.servlet  |         |     |
| repository_agent.user              |         |     |
| repository_agent.pass              |         |     |
| repository_agent.clientcachetype   |         |     |
| repository_agent.local.root_path   |         |     |
| repository_agent.try_license_check |         |     |
| repository_agent.try_usl_check     |         |     |
| repository_agent.usl_param.pcount  |         |     |
| repository_agent.usl_param.args#   |         |     |



|                                           | ActiveX | EXE |
|-------------------------------------------|---------|-----|
| odi.fetchunit                             |         |     |
| odi.fetchtype                             |         |     |
| odi.clientdmtype                          |         |     |
| odi.serverdmtype                          |         |     |
| odi.compresseddatamodule                  |         |     |
| odi.scheduleddata                         |         |     |
| odi.sdmpath                               |         |     |
| odi.disconnectcache                       |         |     |
| odi.refreshbyozparam                      |         |     |
| odi.ozserver.server                       |         |     |
| odi.ozserver.port                         |         |     |
| odi.ozserver.servlet                      |         |     |
| odi.ozserver.user                         |         |     |
| odi.ozserver.pass                         |         |     |
| odi.odinames                              |         |     |
| odi. <i>odiname</i> .pcount               |         |     |
| odi. <i>odiname</i> .args#                |         |     |
| odi. <i>odiname</i> .clientdmtype         |         |     |
| odi. <i>odiname</i> .serverdmtype         |         |     |
| odi. <i>odiname</i> .compresseddatamodule |         |     |
| odi. <i>odiname</i> .fetchunit            |         |     |
| odi. <i>odiname</i> .fetchtype            |         |     |
| odi. <i>odiname</i> .scheduleddata        |         |     |
| odi. <i>odiname</i> .sdmpath              |         |     |
| odi. <i>odiname</i> .disconnectcache      |         |     |
| odi. <i>odiname</i> .refreshbyozparam     |         |     |
| odi. <i>odiname</i> .ozserver.server      |         |     |
| odi. <i>odiname</i> .ozserver.port        |         |     |
| odi. <i>odiname</i> .ozserver.servlet     |         |     |
| odi. <i>odiname</i> .ozserver.user        |         |     |
| odi. <i>odiname</i> .ozserver.pass        |         |     |



|                            | ActiveX | EXE |
|----------------------------|---------|-----|
| ozadoc.path                |         |     |
| ozadoc.force_initboard     |         |     |
| ozadoc.autoadjustsize      |         |     |
| ozadoc.errormessage_type   |         |     |
| ozadoc.splash_image        |         |     |
| ozadoc.isframe             |         |     |
| ozadoc.killprocess         |         |     |
| ozadoc.frame_classname     |         |     |
| ozadoc.main_title          |         |     |
| ozadoc.main_frameicon      |         |     |
| ozadoc.main_frameicon_mask |         |     |
| ozadoc.main_position       |         |     |
| ozadoc.bareserver_log      |         |     |
| ozadoc.script_debug        |         |     |
| ozadoc.pcount              |         |     |
| ozadoc.args#               |         |     |
| ozadoc.background_color    |         |     |
| ozadoc.lockconsole         |         |     |
| application.namespace      |         |     |

### ■ repository\_agent.parametername

#### - repository\_agent.type

|                   |                                                            |
|-------------------|------------------------------------------------------------|
| 가                 |                                                            |
| : ActiveX EXE 가 , |                                                            |
| Definition        | "                                                          |
| Value             | FROM_LOCAL ( )                                             |
|                   | FROM_OZSERVER                                              |
| Example           | <param name="repository_agent.type" value="FROM_OZSERVER"> |

#### - repository\_agent.ozserver.server

|            |                                                                   |
|------------|-------------------------------------------------------------------|
| 가          |                                                                   |
| Definition | IP .                                                              |
| Example    | <param name="repository_agent.ozserver.server" value="127.0.0.1"> |

#### - repository\_agent.ozserver.port

|            |                                                            |
|------------|------------------------------------------------------------|
| 가          |                                                            |
| Definition |                                                            |
| Example    | <param name="repository_agent.ozserver.port" value="8003"> |

#### - repository\_agent.ozserver.servlet

|            |                                                                                                 |
|------------|-------------------------------------------------------------------------------------------------|
| 가          |                                                                                                 |
| Definition |                                                                                                 |
| Example    | <param name="repository_agent.ozserver.servlet" value="http://127.0.0.1:8080/ozservlet/server"> |

#### - repository\_agent.user

- |                   |                                                    |                                        |
|-------------------|----------------------------------------------------|----------------------------------------|
|                   | ID                                                 | .                                      |
|                   | :                                                  | ID                                     |
| <b>Definition</b> | ID                                                 | "repository_agent.<br>user"<br>"guest" |
|                   |                                                    | ID                                     |
| <b>Example</b>    | <param name="repository_agent.user" value="admin"> |                                        |
- repository\_agent.pass
- |                   |                                                    |    |
|-------------------|----------------------------------------------------|----|
| <b>Definition</b> | "repository_agent.user"                            | ID |
|                   | .                                                  |    |
| <b>Example</b>    | <param name="repository_agent.pass" value="admin"> |    |
- repository\_agent.clientcachetype
- |                   |                                                                          |                                   |
|-------------------|--------------------------------------------------------------------------|-----------------------------------|
|                   | .                                                                        | ( : memory,file)                  |
| <b>Definition</b> | :                                                                        | memory, file, disconnect, crypt 가 |
|                   |                                                                          | (,)                               |
|                   | .                                                                        |                                   |
|                   | <i>memory</i>                                                            |                                   |
|                   | <i>file</i>                                                              |                                   |
| <b>Value</b>      | <i>disconnect</i>                                                        | 가                                 |
|                   | <i>crypt</i>                                                             |                                   |
|                   | file, disconnect                                                         |                                   |
| <b>Example</b>    | <param name="repository_agent.clientcachetype" value="file, disconnect"> |                                   |
- repository\_agent.local.root\_path
- |                   |                                                                                           |
|-------------------|-------------------------------------------------------------------------------------------|
| <b>Definition</b> | .                                                                                         |
| <b>Example</b>    | <param name="repository_agent.local.root_path" value="c:/Program Files/Forcs/Repository"> |
- repository\_agent.try\_license\_check

|                   |                                                                |
|-------------------|----------------------------------------------------------------|
| <b>Definition</b> | Serial, true, IP, Mac Address, HDD<br>가                        |
| <b>Value</b>      | <i>true</i><br><i>false</i> ( )                                |
| <b>Example</b>    | <param name="repository_agent.try_license_check" value="true"> |

- repository\_agent.try\_usl\_check

|                   |                                                                   |
|-------------------|-------------------------------------------------------------------|
| <b>Definition</b> | USL<br>USL "User Security Logic"<br>"OZ API<br>Developer's Guide" |
| <b>Value</b>      | <i>true</i> USL<br><i>false</i> USL ( )                           |
| <b>Example</b>    | <param name="repository_agent.try_usl_check" value="true">        |

- repository\_agent.usl\_param.pcount

|                   |                                                            |
|-------------------|------------------------------------------------------------|
| <b>Definition</b> | USL                                                        |
| <b>Example</b>    | <param name="repository_agent.usl_param.pcount" value="2"> |

- repository\_agent.usl\_param.args#

|                   |                                                                                                                                                      |
|-------------------|------------------------------------------------------------------------------------------------------------------------------------------------------|
| <b>Definition</b> | USL<br>1 "repository_agent.<br>usl_param.pcount"<br>"USL = USL"                                                                                      |
| <b>Example</b>    | <param name="repository_agent.usl_param.args1"<br>value="Param1=Value1"><br><param name="repository_agent.usl_param.args2"<br>value="Param2=Value2"> |

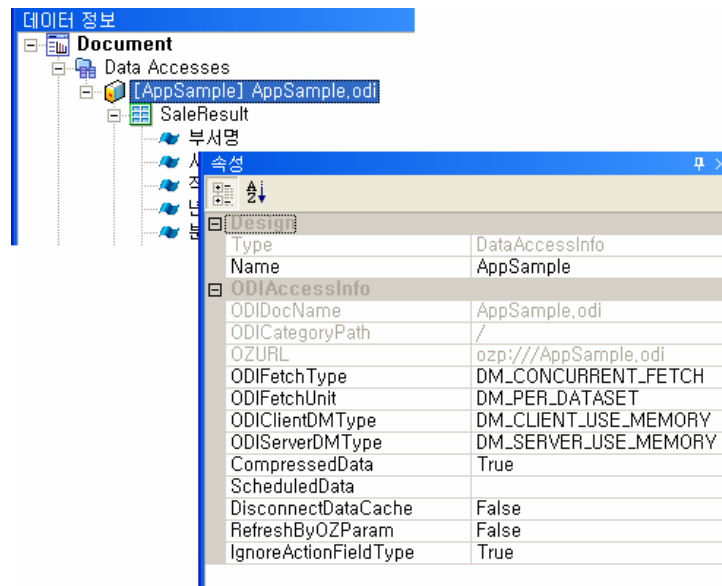
- *odi.parametername, odi.odiname.parametername*

(OZA) 가 ODI

"odi.parametername" , ODI

"odi.odiname.parametername"

OZA



가

- (1) "odi.odiname.parametername"
- (2) "odi.parametername"
- (3) OZA

- odi.fetchtype, odi.odiname.fetchtype

|            |                                                            |
|------------|------------------------------------------------------------|
| Definition | 가                                                          |
|            | : "odi.[ <i>odiname</i> .]fetchunit" "dm_per_dataset"      |
| Value      | "odi.[ <i>odiname</i> .]fetchtype"                         |
|            | "dm_concurrent_fetch"                                      |
|            | "odi.[ <i>odiname</i> .]fetchunit"                         |
|            | "dm_per_datamodule"                                        |
|            | "odi.[ <i>odiname</i> .]fetchtype"                         |
| Example    | "dm_concurrent_fetch" "dm_batch_fetch"                     |
|            |                                                            |
| Value      | <i>dm_concurrent_fetch</i> ( )                             |
|            | <i>dm_batch_fetch</i>                                      |
| Example    | <param name="odi . fetchtype" value="dm_concurrent_fetch"> |

- odi.fetchunit, odi.*odiname*.fetchunit

|            |                                                       |
|------------|-------------------------------------------------------|
| Definition |                                                       |
| Value      | <i>dm_per_dataset</i> , ODI 가                         |
|            | ( )                                                   |
| Value      | <i>dm_per_datamodule</i> , ODI . ODI                  |
|            | ODI 가                                                 |
| Example    | <param name="odi . fetchunit" value="dm_per_dataset"> |

- odi.clientdmtype, odi.*odiname*.clientdmtype

|            |                                                                |
|------------|----------------------------------------------------------------|
| Definition |                                                                |
| Value      | <i>dm_client_use_memory</i>                                    |
|            | ( )                                                            |
| Value      | <i>dm_client_use_file</i>                                      |
|            | <i>dm_client_use_normal</i>                                    |
| Example    | <param name="odi . clientdmtype" value="dm_client_use_memory"> |



- odi.serverdmttype, odi.odiname.serverdmttype

|                   |                                                                   |
|-------------------|-------------------------------------------------------------------|
| <b>Definition</b> | 가                                                                 |
| <b>Value</b>      | <div>dm_server_use_memory ( )</div> <div>dm_server_use_file</div> |
| <b>Example</b>    | <param name="odi . serverdmttype" val ue="dm_server_use_memory">  |

- odi.compresseddatamodule, odi.odiname.compresseddatamodule

|                   |                                                          |
|-------------------|----------------------------------------------------------|
| <b>Definition</b> |                                                          |
| <b>Value</b>      | <div>true ( )</div> <div>false</div>                     |
| <b>Example</b>    | <param name="odi . compresseddatamodul e" val ue="true"> |

- odi.scheduleddata, odi.odiname.scheduleddata

|                   |                                                                                                                                                          |
|-------------------|----------------------------------------------------------------------------------------------------------------------------------------------------------|
| <b>Definition</b> | <div>SDM</div> <div>SDM</div> <div>SDM</div> <div>"datamodule_path" (/ /SDM )</div> <div>: "odi.[odiname].scheduleddata" 가 , "odi.disconnectcache"</div> |
| <b>Example</b>    | <param name="odi . schedul eddata" val ue="Customer. sdm">                                                                                               |

- odi.sdmpath, odi.odiname.sdmpath

|                   |                                                                                                                                            |
|-------------------|--------------------------------------------------------------------------------------------------------------------------------------------|
| <b>Definition</b> | <div>SDM</div> <div>SDM</div> <div>SDM</div> <div>OZURL HTTP</div> <div>: "odi.[odiname].sdmpath" 가</div> <div>"odi.disconnectcache"</div> |
|-------------------|--------------------------------------------------------------------------------------------------------------------------------------------|

**Example** <param name="odi.sdmpath" value="ozp:///sdm  
files/Customr.sdm">

- odi.disconnectcache, odi.odiname.disconnectcache

| SDM               |                                                 |
|-------------------|-------------------------------------------------|
| <b>Definition</b> | 가                                               |
| <b>Value</b>      | <i>true</i><br><i>false</i> ( )                 |
| <b>Example</b>    | <param name="odi.disconnectcache" value="true"> |

: "odi.[odiname].disconnectcache/scheduleddata/sdmpath"  
"odi.[odiname].fetchunit" "dm\_per\_datamodule"

"odi.[odiname].disconnectcache/scheduleddata/sdmpath"

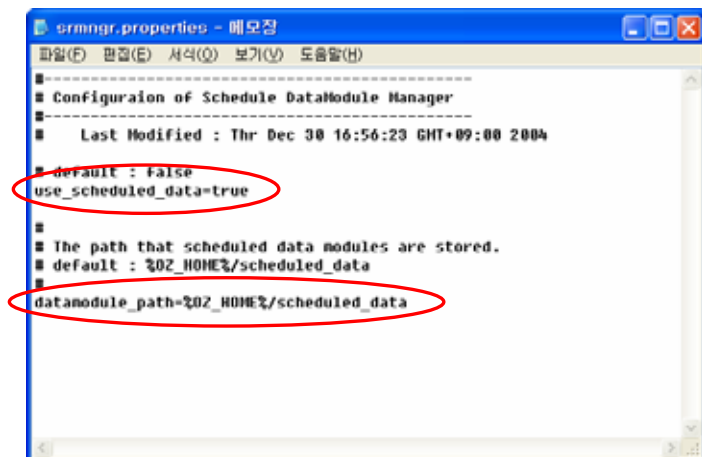
scheduleddata

가 , SDM 가

"srmngr.properties"

"use\_scheduled\_data"가 "true"

"datamodule\_path"가



- odi.refreshbyozparam, odi.odiname.refreshbyozparam

|                   |                                                                                                       |       |
|-------------------|-------------------------------------------------------------------------------------------------------|-------|
|                   | ODI<br>가                                                                                              | 가     |
| <b>Definition</b> | : "odi.[ <i>odiname.</i> ]refreshbyozparam" "odi.[ <i>odi<br/>names.</i> ]fetchunit" "dm_per_dataset" |       |
| <b>Value</b>      | <i>true</i>                                                                                           | 가     |
|                   | <i>false</i>                                                                                          | 가 ( ) |
| <b>Example</b>    | <param name="odi.refreshbyozparam" value="true">                                                      |       |

- odi.ozserver.server, odi.*odiname.*ozserver.server

|                   |                                                      |          |     |
|-------------------|------------------------------------------------------|----------|-----|
|                   | 가                                                    | 가        | 가   |
|                   | IP                                                   | .        | 가   |
|                   | 가                                                    | .        |     |
| <b>Definition</b> | : USL                                                |          | ,   |
|                   | ODI                                                  | 가<br>USL | USL |
| <b>Example</b>    | <param name="odi.ozserver.server" value="127.0.0.1"> |          |     |

- odi.ozserver.port, odi.*odiname.*ozserver.port

|                   |                                               |   |   |
|-------------------|-----------------------------------------------|---|---|
|                   | 가                                             | 가 | 가 |
| <b>Definition</b> |                                               | . |   |
|                   | 가                                             | . |   |
| <b>Example</b>    | <param name="odi.ozserver.port" value="8003"> |   |   |

- odi.ozserver.servlet, odi.*odiname.*ozserver.servlet

|                   |                                                                                    |       |     |
|-------------------|------------------------------------------------------------------------------------|-------|-----|
|                   | 가                                                                                  | 가     | 가   |
|                   | 가                                                                                  | .     |     |
| <b>Definition</b> | : USL                                                                              |       | ,   |
|                   | 가                                                                                  | USL   | ODI |
|                   |                                                                                    | , USL |     |
| <b>Example</b>    | <param name="odi.ozserver.servlet" value="http://127.0.0.1:8080/ozservlet/server"> |       |     |

- odi.ozserver.user, odi.odiname.ozserver.user

|                   |                                                |    |   |
|-------------------|------------------------------------------------|----|---|
| <b>Definition</b> | 가                                              | ID | 가 |
|                   |                                                | 가  |   |
| <b>Example</b>    | <param name="odi.ozserver.user" value="admin"> |    |   |

- odi.ozserver.pass, oid.odiname.ozserver.pass

|                   |                                                |    |   |
|-------------------|------------------------------------------------|----|---|
| <b>Definition</b> | 가                                              | ID | 가 |
|                   | 가                                              |    |   |
| <b>Example</b>    | <param name="odi.ozserver.pass" value="admin"> |    |   |

- odi.odinames

|                   |                                                                                  |                              |                                       |
|-------------------|----------------------------------------------------------------------------------|------------------------------|---------------------------------------|
| <b>Definition</b> | ODI                                                                              | OZA<br>ODI                   | ODI<br>,                              |
|                   |                                                                                  | : FXDataModule<br>"_OZData_" | "_OZGlobal_"                          |
| <b>Example</b>    | OZA<br>"CustomerInfo.odi"<br>"_OZData_"                                          | 가<br>,<br>FXDataModule       | "Foodmart.odi",<br>"_OZGlobal_",<br>" |
|                   | <param name="odi.odinames" value="Foodmart, CustomerInfo, _OZGlobal_, _OZData_"> |                              |                                       |

- odi.odiname.pcount

|                   |                                                                                                                                                |     |   |
|-------------------|------------------------------------------------------------------------------------------------------------------------------------------------|-----|---|
| <b>Definition</b> | "odi.odiname"                                                                                                                                  | ODI | 가 |
|                   | ODI                                                                                                                                            |     |   |
| <b>Example</b>    | <param name="odi.Foodmart.pcount" value="2"><br><param name="odi._OZGlobal_.pcount" value="1"><br><param name="odi._OZData_.pcount" value="1"> |     |   |

- odi.odiname.args#

|                   |                                                                                                                                                                                                                                                                                                                                                                                      |
|-------------------|--------------------------------------------------------------------------------------------------------------------------------------------------------------------------------------------------------------------------------------------------------------------------------------------------------------------------------------------------------------------------------------|
| <b>Definition</b> | <div> <div>"#"</div> <div>1</div> </div> <div> <div>"odi.odiname.pcount"</div> <div>가</div> </div>                                                                                                                                                                                                                                                                                   |
| <b>Example</b>    | <div> <div>"</div> <div>=</div> <div>"</div> </div> <div> <div>&lt;param name="odi . Foodmart . args1" val ue="Ci ty=Seoul "&gt;</div> <div>&lt;param name="odi . Foodmart . args2" val ue="Country=Korea"&gt;</div> <div>&lt;param name="odi . _OZGI obal _ . args1" val ue="Gender=F"&gt;</div> <div>&lt;param name="odi . _OZData _ . args1" val ue="StoreI D=2"&gt;</div> </div> |

100, OZA

- |                   |                                                    |
|-------------------|----------------------------------------------------|
|                   | OZA                                                |
| <b>Definition</b> | . OZA                                              |
|                   | .                                                  |
| <b>Example</b>    | OZA /test/test1.oza                                |
|                   | <param name="ozadoc.path" value="/test/test1.oza"> |

- |                   | OZA                                                      | 가   | 가        |
|-------------------|----------------------------------------------------------|-----|----------|
| <b>Definition</b> | '                                                        | .   |          |
|                   |                                                          | OZA | Document |
|                   | "StartUpBoard"                                           |     |          |
| <b>Example</b>    | <param name="ozadoc. force_i ni tboard" val ue="Board2"> |     |          |

- |                   | EXE                                                | 가                                                      | Board      |
|-------------------|----------------------------------------------------|--------------------------------------------------------|------------|
| <b>Definition</b> |                                                    | 가                                                      | Board      |
|                   | EXE                                                | 가                                                      | Board      |
| <b>Value</b>      | <i>true</i>                                        | : ActiveX<br>ActiveX<br>100%<br>"100%" height = "100%" | 가 (width = |
|                   | <i>false</i>                                       | EXE<br>Board                                           | ( )        |
| <b>Example</b>    | <param name="ozadoc. autoadjustsize" value="true"> |                                                        |            |

- ozadoc.errorMessage\_type

|            |                                                            |                        |     |
|------------|------------------------------------------------------------|------------------------|-----|
| Definition | OZA                                                        |                        |     |
|            |                                                            |                        |     |
| Value      | <i>MessageBox</i>                                          | 가                      | ( ) |
|            |                                                            |                        |     |
|            | <i>Trace</i>                                               | 가                      |     |
|            | :                                                          | <Ctrl> + <Shift> + <Z> |     |
|            |                                                            |                        |     |
|            | <i>Ignore</i>                                              | 가                      |     |
|            |                                                            |                        |     |
|            | <i>TraceNMessageBox</i>                                    |                        | 가   |
| Example    | <param name="ozadoc.errorMessage_type" value="MessageBox"> |                        |     |

- ozadoc.splash\_image

|            |                                                                                    |
|------------|------------------------------------------------------------------------------------|
| 가          |                                                                                    |
| Definition | OZURL                                                                              |
|            | HTTP                                                                               |
| Example    | <pre>&lt;param name="ozadoc.splash_image" value="ozp: //images/main.jpg"&gt;</pre> |

- ozadoc.isframe

|            |         |                            |         |
|------------|---------|----------------------------|---------|
| Definition | ActiveX | 가                          | EXE     |
|            |         |                            |         |
| Value      |         | EXE                        | ActiveX |
|            |         | EXE                        | OZA     |
|            | true    | : "ozadoc.frame_classname" |         |
|            |         |                            |         |
|            | false   | EXE                        | ( )     |

---

```

        , EXE
        ,
        ActiveX 가 EXE
        : AcitveX EXE
        , EXE
        ActiveX
        .
    
```

---

**Example** <param name="ozadoc.isframe" value="true">

---

### - ozadoc.killprocess

---

```

        ActiveX 가
        EXE
        : "ozadoc.killprocess" "ozadoc.isframe" "true"
        .
        true , EXE
        Value
        false , EXE
        ( )
        Example
        <param name="ozadoc.killprocess" value="true">
    
```

---

### - ozadoc.frame\_classname

---

```

        EXE
        Definition
        , EXE
        .
        Example
        <param name="ozadoc.frame_classname" value="myClass1">
    
```

---

### - ozadoc.main\_title

---

```

        Definition
        .
        Example
        <param name="ozadoc.main_title" value="Welcome">
    
```

---

### - ozadoc.main\_frameicon

---

```

        HTTP
        Definition
        : "ozadoc.main_frameicon" "null"
        .
        OZURL
    
```

---



**Example** <param name="ozadoc.main\_frameicon"  
value="ozp: //images/main.ico">

- ozadoc.main\_frameicon\_mask

**Definition** RGB

**Example** <param name="ozadoc.main\_frameicon\_mask" value="255, 255, 255">

- ozadoc.main\_position

|                   | EXE           | 가                                                  |
|-------------------|---------------|----------------------------------------------------|
| <b>Definition</b> | EXE<br>:      | 가<br><i>maximize</i><br><i>center</i> 가            |
| <b>Value</b>      | x, y<br>( : ) | x, y<br>x, y, width, height<br>( : )               |
| <b>Example</b>    | 가 30 , 50     | 100 , 200<br>ozadoc.main_position=30, 50, 100, 200 |

- ozadoc.bareserver\_log

|                   | EXE                                                 | 가           |
|-------------------|-----------------------------------------------------|-------------|
| <b>Definition</b> | Console.txt<br>가 Console.txt                        | Console.txt |
| <b>Value</b>      | <i>true</i> Console.txt<br><i>false</i> Console.txt | ( )         |
| <b>Example</b>    | ozadoc.bareserver_log=true                          |             |

- ozadoc.script\_debug

|                           |                                                                                                                       |
|---------------------------|-----------------------------------------------------------------------------------------------------------------------|
|                           | <pre> : "OZAViewerDll.dll" "ScriptDebugger.dll", "/res/sd_ _가.dll" , OZA Document "AllowExternalAccess" "True" </pre> |
| <b>Definition</b>         |                                                                                                                       |
| <b>Value</b>              | <pre> true false ( ) </pre>                                                                                           |
| <b>Example</b>            | <code>&lt;param name="ozadoc. scri pt_debug" val ue="fal se"&gt;</code>                                               |
| - ozadoc.pcount           |                                                                                                                       |
| <b>Definition</b>         |                                                                                                                       |
| <b>Example</b>            | <code>&lt;param name="ozadoc. pcount" val ue="2"&gt;</code>                                                           |
| - ozadoc.args#            |                                                                                                                       |
|                           | <pre> "#" , "ozadoc.pcount " 가 1 </pre>                                                                               |
| <b>Definition</b>         | <pre> " = " : ozadoc.args# _GetGlobal(" "); _GetGlobalArray( ); 가 </pre>                                              |
| <b>Example</b>            | <pre> &lt;param name="ozadoc. args1" val ue="ID=abc"&gt; &lt;param name="ozadoc. args2" val ue="PW=a1234"&gt; </pre>  |
| - ozadoc.background_color |                                                                                                                       |
| <b>Definition</b>         | <pre> RGB (,) </pre>                                                                                                  |
| <b>Example</b>            | <code>&lt;param name="ozadoc. background_col or" val ue="0, 255, 255"&gt;</code>                                      |
| - ozadoc.lockconsole      |                                                                                                                       |
| <b>Definition</b>         | <code>&lt;Ctrl+Shift+Z&gt;</code>                                                                                     |

|         |                                                |
|---------|------------------------------------------------|
| Value   | <i>true</i>                                    |
|         | <i>false</i> ( )                               |
| Example | <param name="ozadoc.Lockconsole" value="true"> |

■ application.*parametername*

- application.namespace

|            |                                                           |                                      |
|------------|-----------------------------------------------------------|--------------------------------------|
| Definition | PC                                                        | 가                                    |
|            |                                                           | ActiveX                              |
| Definition | "install.namespace"<br>(OZAViewerOCX.ocx)                 | . "application.namespace"<br>ActiveX |
|            |                                                           | "\bin" 가                             |
| Example    | <param name="application.namespace" value="F00D2005\bin"> |                                      |

EXE

•

- ActiveX

## HTML

<body> </body>

EXE "OZAViewer.exe"

$$=$$

```
, "isframe" "true"
```

```
"iframe"    "true"
```

- ActiveX

- FORCS Co., LTD**

- EXE ( )
  - repository\_agent.local.root\_path
  - ozadoc.path



- ActiveX ( )
 

```
<param name="repository_agent.type" value="FROM_OZSERVER">
<param name="repository_agent.ozserver.servlet"
      value="http://127.0.0.1:8080/ozservlet/server">
<param name="application.namespace" value="F00D2005\bin">
<param name="ozadoc.path" value="Customer.oz">
```

- EXE ( )
 

```
repository_agent.local.root_path=c:/Repository
ozadoc.path=Customer.oz
```



가

, "ozadoc.force\_initboard"

- ActiveX
 

```
<param name=";ozadoc.force_initboard" value="Board2">
```

- EXE
 

```
; ozadoc.force_initboard=Board2
```





● EXE  
● ActiveX

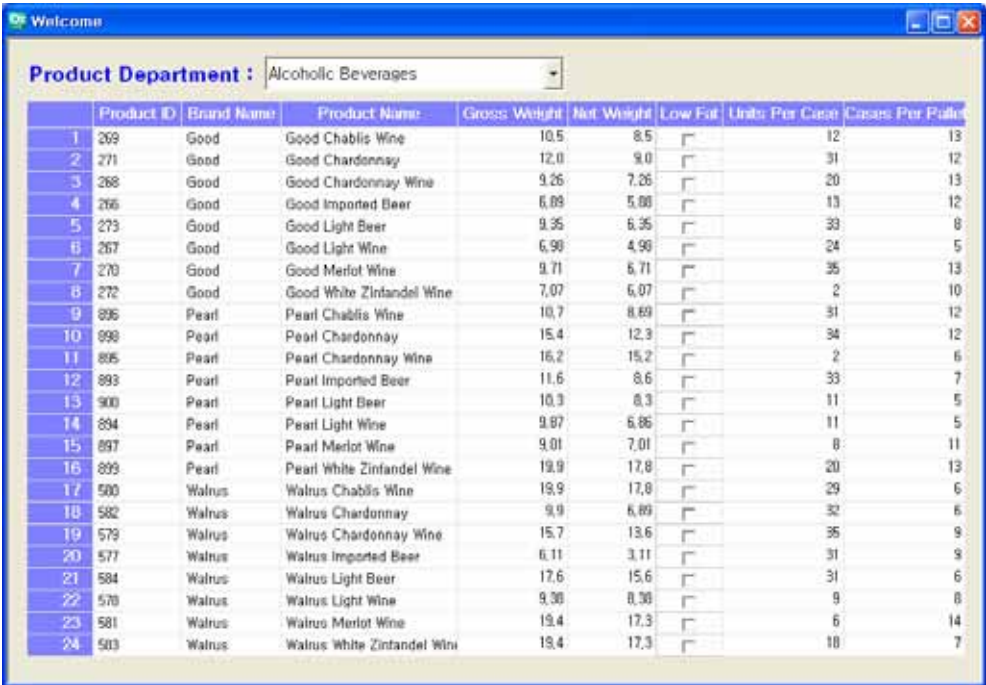
EXE

EXE

EXE                      EXE                      "OZAViewer.exe"

EXE                      "OZAViewer.exe"                      "param.oz"

EXE



The screenshot shows a window titled "Welcome" with a dropdown menu set to "Alcoholic Beverages". Below the menu is a table with the following data:

|    | Product ID | Brand Name | Product Name                | Gross Weight | Net Weight | Low Fat | Units Per Case | Cases Per Pallet |
|----|------------|------------|-----------------------------|--------------|------------|---------|----------------|------------------|
| 1  | 269        | Good       | Good Chablis Wine           | 10.5         | 8.5        | ☐       | 12             | 13               |
| 2  | 271        | Good       | Good Chardonnay             | 12.0         | 9.0        | ☐       | 31             | 12               |
| 3  | 268        | Good       | Good Chardonnay Wine        | 9.26         | 7.26       | ☐       | 20             | 13               |
| 4  | 266        | Good       | Good Imported Beer          | 6.89         | 5.89       | ☐       | 13             | 12               |
| 5  | 273        | Good       | Good Light Beer             | 9.35         | 6.35       | ☐       | 33             | 8                |
| 6  | 267        | Good       | Good Light Wine             | 6.99         | 4.99       | ☐       | 24             | 5                |
| 7  | 270        | Good       | Good Merlot Wine            | 9.71         | 6.71       | ☐       | 35             | 13               |
| 8  | 272        | Good       | Good White Zinfandel Wine   | 7.07         | 6.07       | ☐       | 2              | 10               |
| 9  | 896        | Pearl      | Pearl Chablis Wine          | 10.7         | 8.69       | ☐       | 31             | 12               |
| 10 | 998        | Pearl      | Pearl Chardonnay            | 15.4         | 12.3       | ☐       | 34             | 12               |
| 11 | 895        | Pearl      | Pearl Chardonnay Wine       | 16.2         | 15.2       | ☐       | 2              | 6                |
| 12 | 893        | Pearl      | Pearl Imported Beer         | 11.6         | 8.6        | ☐       | 33             | 7                |
| 13 | 900        | Pearl      | Pearl Light Beer            | 10.3         | 8.3        | ☐       | 11             | 5                |
| 14 | 894        | Pearl      | Pearl Light Wine            | 9.87         | 6.86       | ☐       | 11             | 5                |
| 15 | 897        | Pearl      | Pearl Merlot Wine           | 9.01         | 7.01       | ☐       | 8              | 11               |
| 16 | 899        | Pearl      | Pearl White Zinfandel Wine  | 19.9         | 17.8       | ☐       | 20             | 13               |
| 17 | 500        | Walrus     | Walrus Chablis Wine         | 19.9         | 17.8       | ☐       | 29             | 6                |
| 18 | 582        | Walrus     | Walrus Chardonnay           | 9.9          | 6.89       | ☐       | 32             | 6                |
| 19 | 579        | Walrus     | Walrus Chardonnay Wine      | 15.7         | 13.6       | ☐       | 35             | 9                |
| 20 | 577        | Walrus     | Walrus Imported Beer        | 6.11         | 3.11       | ☐       | 31             | 9                |
| 21 | 584        | Walrus     | Walrus Light Beer           | 17.6         | 15.6       | ☐       | 31             | 6                |
| 22 | 578        | Walrus     | Walrus Light Wine           | 9.38         | 8.38       | ☐       | 9              | 8                |
| 23 | 581        | Walrus     | Walrus Merlot Wine          | 19.4         | 17.3       | ☐       | 6              | 14               |
| 24 | 503        | Walrus     | Walrus White Zinfandel Wine | 19.4         | 17.3       | ☐       | 18             | 7                |



## ActiveX

가

가

```
<script LANGUAGE="Javascr ipt">
    var tag = ' <OBJECT id = "OZAppl i cati onVi ewer" CLASSID="CLSID: 907A00F3-7390-
4EF2-931B-360546587804" wi dth="100%" hei ght="100%"></OBJECT>';
    var paramTag = new Array();
    paramTag[paramTag. length] = ' <param name="reposi tory_ agent. type"
val ue="FROM_OZSERVER">';
    paramTag[paramTag. length] = ' <param name="reposi tory_ agent. ozserver. server"
val ue="127. 0. 0. 1">';
    paramTag[paramTag. length] = ' <param name="reposi tory_ agent. ozserver. port"
val ue="8003">';
    paramTag[paramTag. length] = ' <param name="ozadoc. path" val ue="Customer. oza">';
    paramTag[paramTag. length] = ' <param name="appl i cati on. namespace"
val ue="Food2005\bi n">';
    oz_acti vex_bui ld(OZEmbedControl Locati on, tag, paramTag);
</scri pt>
```

## ActiveX

## HTML

ID

## ActiveX

"OZApplicationViewer"

HTML

OZA

Board    TextBox

OZApplicationViewer.Document.\_GetBoard(' Board1' ). GetChid(' TextBox1' ). Text = ' Hello' ;

ActiveX

- - 
  - OZA, ODI
  - HTML HTML

■ HTML

- HTML

```
<html >
<head>
<title>OZ Application Sample</title>
  <script src="oz_acti vex. js"></scri pt>
</head>
<body>
  <di v id="OZEmbedControl Locati on">
    <scri pt id="ZTransferX" src="ztransferx. js"></scri pt>
    <scri pt LANGUAGE="Javascri pt">
      var tag = ' <OBJECT id = "OZAppli cati onVi ewer" CLASSI D="CLSI D: 907A00F3-
7390-4EF2-931B-360546587804" wi dth="100%" hei ght="100%"></OBJECT>' ;
      var paramTag = new Array();
      paramTag[paramTag. length] = ' <param name="reposi tory_ agent. type"
val ue="FROM_OZSERVER">' ;
      paramTag[paramTag. length] = ' <param
name="reposi tory_ agent. ozserver. server" val ue="127. 0. 0. 1">' ;
      paramTag[paramTag. length] = ' <param
name="reposi tory_ agent. ozserver. port" val ue="8003">' ;
      paramTag[paramTag. length] = ' <param name="ozadoc. path"
val ue="Customer. oza">' ;
```

```

        paramTag[paramTag.length] = '<param name="application.namespace"
value="Food2005\\bin">';
        oz_activex_build(OZEmbedControlLocation, tag, paramTag);
    }
</script>
</div>
</body>
</html>

```

- ztransferx.js

```

var ZTransferXObjectElement = document.createElement('<OBJECT width = "0"
height = "0" ID="ZTransferX" CLASSID="CLSID: C7C7225A-9476-47AC-B0B0-
FF3B79D55E67"
codebase="http://127.0.0.1/OZApplicationViewer/ZTransferX.cab#version=2,1,0
,3"></OBJECT>');
var ZTransferXParamElement1 = document.createElement('<PARAM
NAME="download.Server" VALUE="http://127.0.0.1/OZApplicationViewer/">');
var ZTransferXParamElement2 = document.createElement('<PARAM
NAME="download.Port" VALUE="80">');
var ZTransferXParamElement3 = document.createElement('<PARAM
NAME="download.Instruction" VALUE="ozviewer.idf">');
var ZTransferXParamElement4 = document.createElement('<PARAM
NAME="install.Base" VALUE="<PROGRAMS>/Forcs">');
var ZTransferXParamElement5 = document.createElement('<PARAM
NAME="install.Namespace" VALUE="Food2005">');

ZTransferXObjectElement.appendChild(ZTransferXParamElement1);
ZTransferXObjectElement.appendChild(ZTransferXParamElement2);
ZTransferXObjectElement.appendChild(ZTransferXParamElement3);
ZTransferXObjectElement.appendChild(ZTransferXParamElement4);
ZTransferXObjectElement.appendChild(ZTransferXParamElement5);

OZEmbedControlLocation.appendChild(ZTransferXObjectElement);

```

- oz\_activex.js

```

function oz_activex_build(parent, tag, paramTag){
    var OZViewerObjectElement = document.createElement(tag);
    for(var i = 0 ; i < paramTag.length; i++){
        var OZViewerParamElement = document.createElement(paramTag[i]);
        OZViewerObjectElement.appendChild(OZViewerParamElement);
    }
    parent.appendChild(OZViewerObjectElement);
}

```

가 HTML

OZ Application Sample - Microsoft Internet Explorer

파일(F) 편집(E) 보기(V) 출력(C) 도구(T) 도움말(H)

주소 http://127.0.0.1/OZApplicationViewer/Grid.html

Product Department : Alcoholic Beverages

|    | Product ID | Brand Name | Product Name                | Gross Weight | Net Weight | Low Fat | Units Per Case | Cases Per Pallet |
|----|------------|------------|-----------------------------|--------------|------------|---------|----------------|------------------|
| 1  | 269        | Good       | Good Chablis Wine           | 10.5         | 8.5        |         | 12             | 13               |
| 2  | 271        | Good       | Good Chardonnay             | 12.0         | 9.0        |         | 31             | 12               |
| 3  | 268        | Good       | Good Chardonnay Wine        | 9.26         | 7.26       |         | 20             | 13               |
| 4  | 266        | Good       | Good Imported Beer          | 6.89         | 5.88       |         | 13             | 12               |
| 5  | 273        | Good       | Good Light Beer             | 9.35         | 6.35       |         | 33             | 8                |
| 6  | 267        | Good       | Good Light Wine             | 6.98         | 4.98       |         | 24             | 5                |
| 7  | 270        | Good       | Good Merlot Wine            | 9.71         | 6.71       |         | 35             | 13               |
| 8  | 272        | Good       | Good White Zinfandel Wine   | 7.07         | 6.07       |         | 2              | 10               |
| 9  | 896        | Pearl      | Pearl Chablis Wine          | 10.7         | 8.69       |         | 31             | 12               |
| 10 | 898        | Pearl      | Pearl Chardonnay            | 15.4         | 12.3       |         | 34             | 12               |
| 11 | 895        | Pearl      | Pearl Chardonnay Wine       | 16.2         | 15.2       |         | 2              | 6                |
| 12 | 893        | Pearl      | Pearl Imported Beer         | 11.6         | 8.6        |         | 33             | 7                |
| 13 | 900        | Pearl      | Pearl Light Beer            | 10.3         | 8.3        |         | 11             | 5                |
| 14 | 894        | Pearl      | Pearl Light Wine            | 9.87         | 6.86       |         | 11             | 5                |
| 15 | 897        | Pearl      | Pearl Merlot Wine           | 9.01         | 7.01       |         | 8              | 11               |
| 16 | 899        | Pearl      | Pearl White Zinfandel Wine  | 19.9         | 17.8       |         | 20             | 13               |
| 17 | 580        | Walrus     | Walrus Chablis Wine         | 19.9         | 17.8       |         | 29             | 6                |
| 18 | 582        | Walrus     | Walrus Chardonnay           | 9.9          | 6.89       |         | 32             | 6                |
| 19 | 579        | Walrus     | Walrus Chardonnay Wine      | 15.7         | 13.6       |         | 35             | 9                |
| 20 | 577        | Walrus     | Walrus Imported Beer        | 6.11         | 3.11       |         | 31             | 9                |
| 21 | 584        | Walrus     | Walrus Light Beer           | 17.6         | 15.6       |         | 31             | 6                |
| 22 | 578        | Walrus     | Walrus Light Wine           | 9.38         | 8.38       |         | 9              | 8                |
| 23 | 581        | Walrus     | Walrus Merlot Wine          | 19.4         | 17.3       |         | 6              | 14               |
| 24 | 583        | Walrus     | Walrus White Zinfandel Wine | 19.4         | 17.3       |         | 18             | 7                |

한글 인터넷

## Appendix 1.

## 가

가 .

가 ISO .

| 가     | Display Name                  | ISO 639x Value |
|-------|-------------------------------|----------------|
| af_ZA | Afrikaans - South Africa      | AFK            |
| sq_AL | Albanian - Albania            | SQI            |
| ar_DZ | Arabic - Algeria              | ARG            |
| ar_BH | Arabic - Bahrain              | ARH            |
| ar_EG | Arabic - Egypt                | ARE            |
| ar_IQ | Arabic - Iraq                 | ARI            |
| ar_JO | Arabic - Jordan               | ARJ            |
| ar_KW | Arabic - Kuwait               | ARK            |
| ar_LB | Arabic - Lebanon              | ARB            |
| ar_LY | Arabic - Libya                | ARL            |
| ar_MA | Arabic - Morocco              | ARM            |
| ar_OM | Arabic - Oman                 | ARO            |
| ar_QA | Arabic - Qatar                | ARQ            |
| ar_SA | Arabic - Saudi Arabia         | ARA            |
| ar_SY | Arabic - Syria                | ARS            |
| ar_TN | Arabic - Tunisia              | ART            |
| ar_AE | Arabic - United Arab Emirates | ARU            |
| ar_YE | Arabic - Yemen                | ARY            |
| hy_AM | Armenian - Armenia            |                |
| eu_ES | Basque - Basque               | EUQ            |
| be_BY | Belarusian - Belarus          | BEL            |
| bg_BG | Bulgarian - Bulgaria          | BGR            |
| ca_ES | Catalan - Catalan             | CAT            |
| zh_CN | Chinese - China               | CHS            |
| zh_HK | Chinese - Hong Kong SAR       | ZHH            |
| zh_MO | Chinese - Macau SAR           |                |
| zh_SG | Chinese - Singapore           | ZHI            |

| _ 가    | Display Name                  | ISO 639x Value |
|--------|-------------------------------|----------------|
| zh_TW  | Chinese - Taiwan              | CHT            |
| zh_CHS | Chinese (Simplified)          |                |
| zh_CHT | Chinese (Traditional)         |                |
| hr_HR  | Croatian - Croatia            | HRV            |
| cs_CZ  | Czech - Czech Republic        | CSY            |
| da_DK  | Danish - Denmark              | DAN            |
| div_MV | Dhivehi - Maldives            |                |
| nl_BE  | Dutch - Belgium               | NLB            |
| nl_NL  | Dutch - The Netherlands       |                |
| en_AU  | English - Australia           | ENA            |
| en_BZ  | English - Belize              | ENL            |
| en_CA  | English - Canada              | ENC            |
| en_CB  | English - Caribbean           |                |
| en_IE  | English - Ireland             | ENI            |
| en_JM  | English - Jamaica             | ENJ            |
| en_NZ  | English - New Zealand         | ENZ            |
| en_PH  | English - Philippines         |                |
| en_ZA  | English - South Africa        | ENS            |
| en_TT  | English - Trinidad and Tobago | ENT            |
| en_GB  | English - United Kingdom      | ENG            |
| en_US  | English - United States       | ENU            |
| en_ZW  | English - Zimbabwe            |                |
| et_EE  | Estonian - Estonia            | ETI            |
| fo_FO  | Faroese - Faroe Islands       | FOS            |
| fa_IR  | Farsi - Iran                  | FAR            |
| fi_FI  | Finnish - Finland             | FIN            |
| fr_BE  | French - Belgium              | FRB            |
| fr_CA  | French - Canada               | FRC            |
| fr_FR  | French - France               |                |

| _ 가    | Display Name           | ISO 639x Value |
|--------|------------------------|----------------|
| fr_LU  | French - Luxembourg    | FRL            |
| fr_MC  | French - Monaco        |                |
| fr_CH  | French - Switzerland   | FRS            |
| gl_ES  | Galician - Galician    |                |
| ka_GE  | Georgian - Georgia     |                |
| de_AT  | German - Austria       | DEA            |
| de_DE  | German - Germany       |                |
| de_LI  | German - Liechtenstein | DEC            |
| de_LU  | German - Luxembourg    | DEL            |
| de_CH  | German - Switzerland   | DES            |
| el_GR  | Greek - Greece         | ELL            |
| gu_IN  | Gujarati - India       |                |
| he_IL  | Hebrew - Israel        | HEB            |
| hi_IN  | Hindi - India          | HIN            |
| hu_HU  | Hungarian - Hungary    | HUN            |
| is_IS  | Icelandic - Iceland    | ISL            |
| id_ID  | Indonesian - Indonesia |                |
| it_IT  | Italian - Italy        |                |
| it_CH  | Italian - Switzerland  | ITS            |
| ja_JP  | Japanese - Japan       | JPN            |
| kn_IN  | Kannada - India        |                |
| kk_KZ  | Kazakh - Kazakhstan    |                |
| kok_IN | Konkani - India        |                |
| ko_KR  | Korean - Korea         | KOR            |
| ky_KZ  | Kyrgyz - Kazakhstan    |                |
| lv_LV  | Latvian - Latvia       | LVI            |
| lt_LT  | Lithuanian - Lithuania | LTH            |
| mk_MK  | Macedonian (FYROM)     | MKD            |
| ms_BN  | Malay - Brunei         |                |



| 가     | Display Name                 | ISO 639x Value |
|-------|------------------------------|----------------|
| ms_MY | Malay - Malaysia             |                |
| mr_IN | Marathi - India              |                |
| mn_MN | Mongolian - Mongolia         |                |
| nb_NO | Norwegian (Bokmål) - Norway  |                |
| nn_NO | Norwegian (Nynorsk) - Norway |                |
| pl_PL | Polish - Poland              | PLK            |
| pt_BR | Portuguese - Brazil          | PTB            |
| pt_PT | Portuguese - Portugal        |                |
| pa_IN | Punjabi - India              |                |
| ro_RO | Romanian - Romania           | ROM            |
| ru_RU | Russian - Russia             | RUS            |
| sa_IN | Sanskrit - India             |                |
| sk_SK | Slovak - Slovakia            | SKY            |
| sl_SI | Slovenian - Slovenia         | SLV            |
| es_AR | Spanish - Argentina          | ESS            |
| es_BO | Spanish - Bolivia            | ESB            |
| es_CL | Spanish - Chile              | ESL            |
| es_CO | Spanish - Colombia           | ESO            |
| es_CR | Spanish - Costa Rica         | ESC            |
| es_DO | Spanish - Dominican Republic | ESD            |
| es_EC | Spanish - Ecuador            | ESF            |
| es_SV | Spanish - El Salvador        | ESE            |
| es_GT | Spanish - Guatemala          | ESG            |
| es_HN | Spanish - Honduras           | ESH            |
| es_MX | Spanish - Mexico             | ESM            |
| es_NI | Spanish - Nicaragua          | ESI            |
| es_PA | Spanish - Panama             | ESA            |
| es_PY | Spanish - Paraguay           | ESZ            |
| es_PE | Spanish - Peru               | ESR            |

| _ 가    | Display Name          | ISO 639x Value |
|--------|-----------------------|----------------|
| es_PR  | Spanish - Puerto Rico | ES             |
| es_ES  | Spanish - Spain       |                |
| es_UY  | Spanish - Uruguay     | ESY            |
| es_VE  | Spanish - Venezuela   | ESV            |
| sw_KE  | Swahili - Kenya       |                |
| sv_FI  | Swedish - Finland     | SVF            |
| sv_SE  | Swedish - Sweden      |                |
| syr_SY | Syriac - Syria        |                |
| ta_IN  | Tamil - India         |                |
| tt_RU  | Tatar - Russia        |                |
| te_IN  | Telugu - India        |                |
| th_TH  | Thai - Thailand       | THA            |
| tr_TR  | Turkish - Turkey      | TRK            |
| uk_UA  | Ukrainian - Ukraine   | UKR            |
| ur_PK  | Urdu - Pakistan       | URD            |
| vi_VN  | Vietnamese - Vietnam  | VIT            |

## Appendix 2.

● Visual Basic .NET

● C# .NET

Visual Basic .NET

Visual Basic 가 ,  
가 "Open\_FromString()"

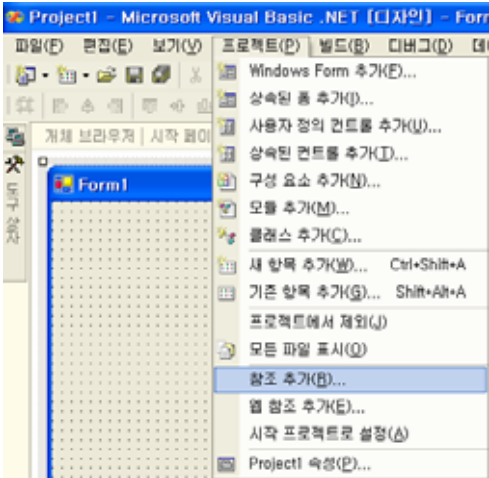
"Open\_FromString()"

OZApplicationViewer0CX1.Open\_FromString(string Parameter)  
(string Parameter)  
OZA

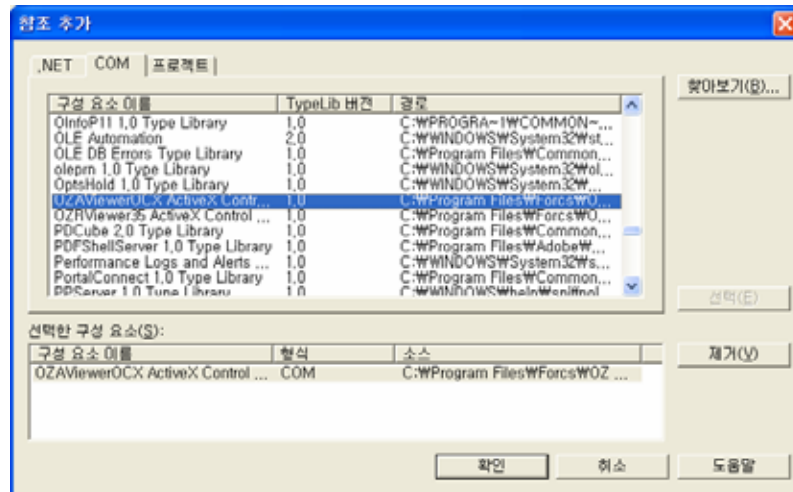
Visual Basic , OZA

Step 1

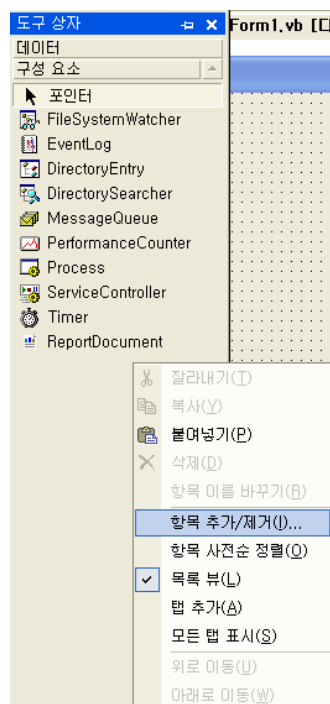
Visual Basic [ ] → [ 가]



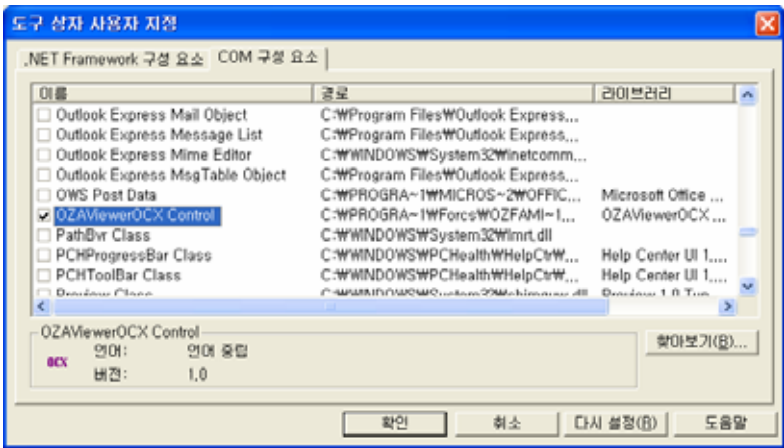
가 [COM]  
 "OZViewerOCX ActiveX Control Module" 가 [ ]



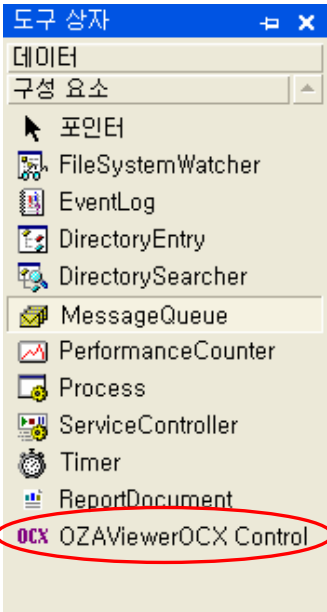
[ 가/ ]



[COM]  
 "OZViewer OCX Control" [ ]



가



**Step 2**

"OZViewerOCX Control" 가 , "Open\_FromString"

OZA

& 가



Step 3 [ ] → [ ] 가

Form1

Product Department : Alcoholic Beverages

|    | Product ID | Brand Name | Product Name               | Gross Weight | Net Weight | Low Fat | Units Per Case | Cases Per Pallet |
|----|------------|------------|----------------------------|--------------|------------|---------|----------------|------------------|
| 1  | 269        | Good       | Good Chablis Wine          | 10.5         | 8.5        | ☐       | 12             | 13               |
| 2  | 271        | Good       | Good Chardonnay            | 12.0         | 9.0        | ☐       | 31             | 12               |
| 3  | 268        | Good       | Good Chardonnay Wine       | 9.26         | 7.26       | ☐       | 20             | 13               |
| 4  | 266        | Good       | Good Imported Beer         | 6.89         | 5.89       | ☐       | 13             | 12               |
| 5  | 273        | Good       | Good Light Beer            | 9.35         | 6.35       | ☐       | 33             | 8                |
| 6  | 267        | Good       | Good Light Wine            | 6.98         | 4.98       | ☐       | 24             | 5                |
| 7  | 270        | Good       | Good Merlot Wine           | 9.71         | 6.71       | ☐       | 35             | 13               |
| 8  | 272        | Good       | Good White Zinfandel Wine  | 7.07         | 6.07       | ☐       | 2              | 10               |
| 9  | 896        | Pearl      | Pearl Chablis Wine         | 10.7         | 8.69       | ☐       | 31             | 12               |
| 10 | 898        | Pearl      | Pearl Chardonnay           | 15.4         | 12.3       | ☐       | 34             | 12               |
| 11 | 895        | Pearl      | Pearl Chardonnay Wine      | 16.2         | 15.2       | ☐       | 2              | 6                |
| 12 | 893        | Pearl      | Pearl Imported Beer        | 11.6         | 8.6        | ☐       | 33             | 7                |
| 13 | 900        | Pearl      | Pearl Light Beer           | 10.3         | 8.3        | ☐       | 11             | 5                |
| 14 | 894        | Pearl      | Pearl Light Wine           | 9.87         | 6.86       | ☐       | 11             | 5                |
| 15 | 897        | Pearl      | Pearl Merlot Wine          | 9.01         | 7.01       | ☐       | 8              | 11               |
| 16 | 899        | Pearl      | Pearl White Zinfandel Wine | 19.9         | 17.8       | ☐       | 20             | 13               |
| 17 | 580        | Walrus     | Walrus Chablis Wine        | 19.9         | 17.8       | ☐       | 29             | 6                |
| 18 | 582        | Walrus     | Walrus Chardonnay          | 9.9          | 8.89       | ☐       | 32             | 6                |
| 19 | 579        | Walrus     | Walrus Chardonnay Wine     | 15.7         | 13.6       | ☐       | 35             | 9                |
| 20 | 577        | Walrus     | Walrus Imported Beer       | 6.11         | 3.11       | ☐       | 31             | 9                |
| 21 | 584        | Walrus     | Walrus Light Beer          | 17.5         | 15.6       | ☐       | 31             | 6                |
| 22 | 578        | Walrus     | Walrus Light Wine          | 9.38         | 8.38       | ☐       | 9              | 8                |
| 23 | 581        | Walrus     | Walrus Merlot Wine         | 19.4         | 17.3       | ☐       | 6              | 14               |
| 24 | 583        | Walrus     | Walrus White Zinfandel Win | 19.4         | 17.3       | ☐       | 18             | 7                |



## C# .NET

C# COM 가 ,  
가 "Open\_FromString()"

"Open\_FromString()"

OZAVi ewerOCX1. Open\_FromString(string Parameter)

(string Parameter)

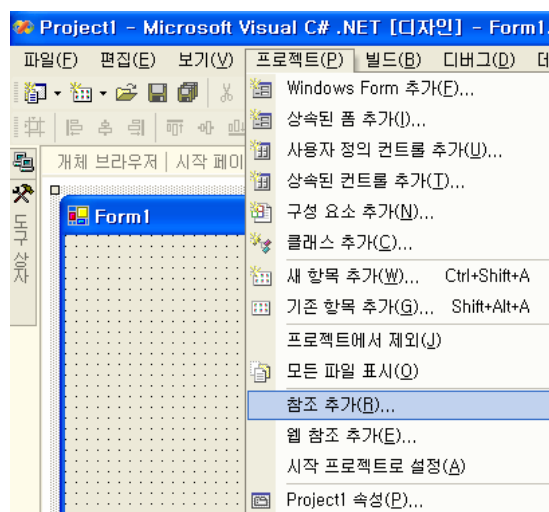
OZA

C#

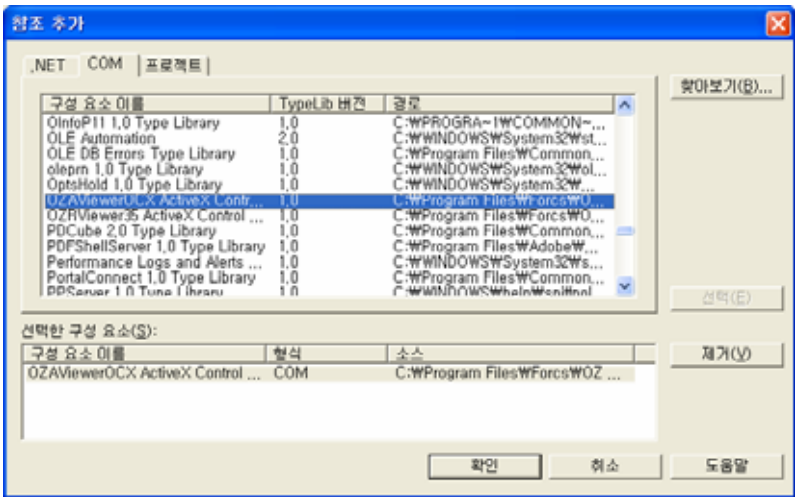
OZA

**Step 1**

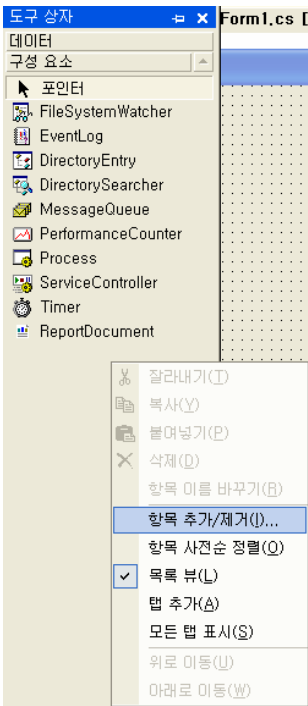
C# [ ] → [ 가]



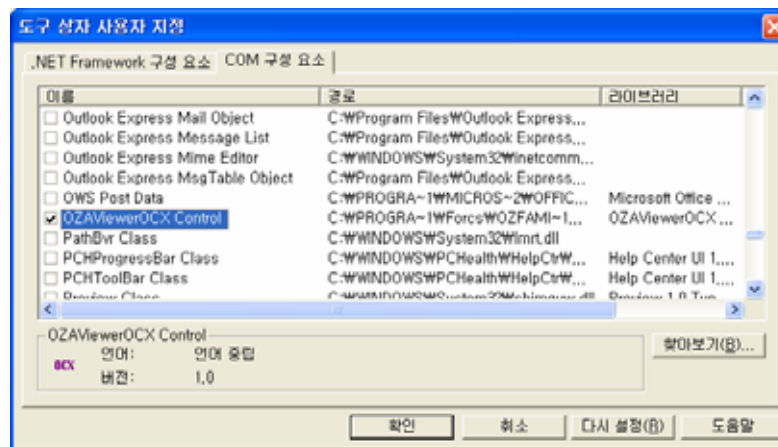
가 [COM]  
"OZViewerOCX ActiveX Control Module" 가 [ ]



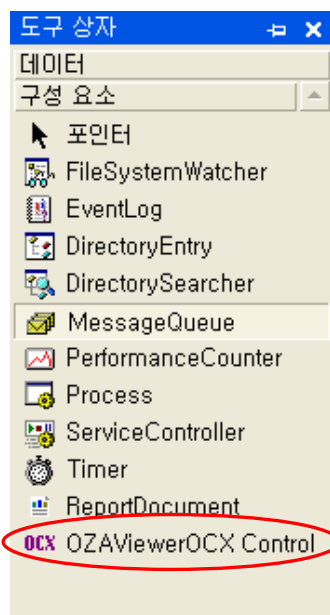
[ 가/ ]



[COM]  
"OZViewer OCX Control" [ ]



가



**Step 2**

"OZViewerOCX Control"  
OZA

가 , "Open\_FromString"

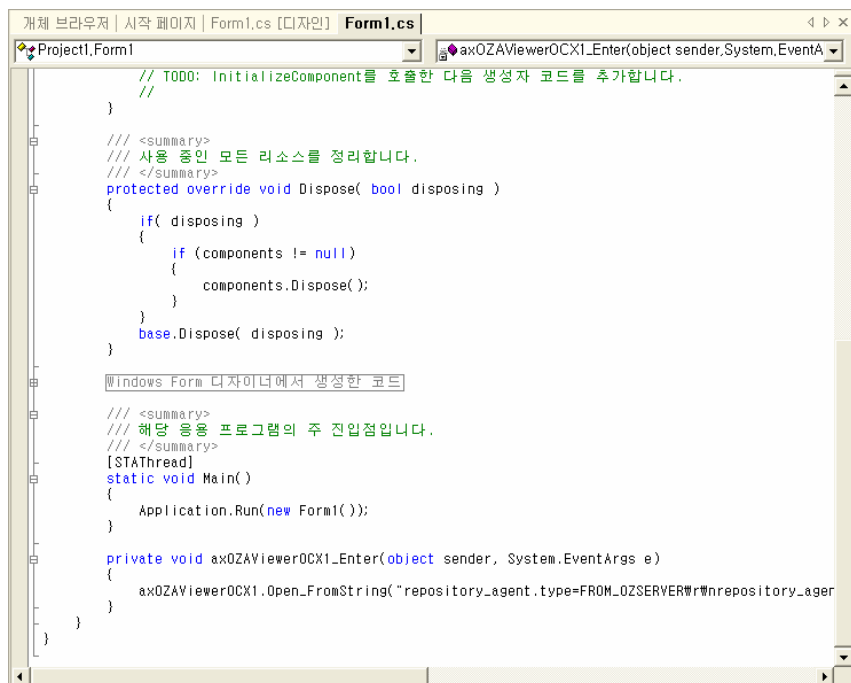
& 가



```

"Project1.Form1" "axOZAViewerOCX1_Enter"
. ("Open_FromString" OZA
, ODI
.)

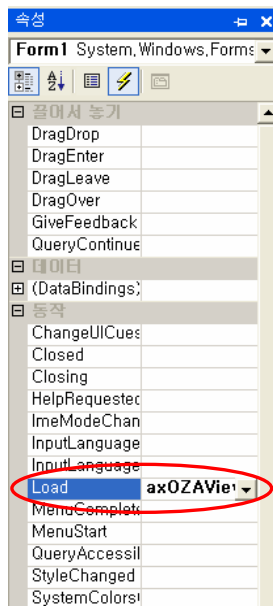
```



```
axOZAViewerOCX1.Open_FromString("repository_agent.type=FROM_OZSERVER
```

```
R\nrepository_agent.ozserver.server=127.0.0.1\nrepository_agent.ozserver.port=8003\nnozadoc.path=Gri d. oza\nappl i cati on. namespace=Food2005\bi n");
```

[       ]       "Load"       "axOZViewerOCX1\_Enter"



**Step 3**

[       ] → [       ]

가

| Product Department : Alcoholic Beverages |            |            |                             |              |            |         |                |                  |
|------------------------------------------|------------|------------|-----------------------------|--------------|------------|---------|----------------|------------------|
|                                          | Product ID | Brand Name | Product Name                | Gross Weight | Net Weight | Low Fat | Units Per Case | Cases Per Pallet |
| 1                                        | 269        | Good       | Good Chablis Wine           | 10.5         | 8.5        | ☐       | 12             | 13               |
| 2                                        | 271        | Good       | Good Chardonnay             | 12.9         | 9.0        | ☐       | 31             | 12               |
| 3                                        | 358        | Good       | Good Chardonnay Wine        | 9.25         | 7.25       | ☐       | 20             | 13               |
| 4                                        | 356        | Good       | Good Imported Beer          | 6.89         | 5.88       | ☐       | 19             | 12               |
| 5                                        | 273        | Good       | Good Light Beer             | 9.35         | 6.35       | ☐       | 39             | 8                |
| 6                                        | 257        | Good       | Good Light Wine             | 6.98         | 4.98       | ☐       | 24             | 5                |
| 7                                        | 270        | Good       | Good Merlot Wine            | 9.71         | 6.71       | ☐       | 35             | 13               |
| 8                                        | 272        | Good       | Good White Zinfandel Wine   | 7.07         | 6.07       | ☐       | 2              | 10               |
| 9                                        | 896        | Pearl      | Pearl Chablis Wine          | 10.7         | 8.69       | ☐       | 31             | 12               |
| 10                                       | 898        | Pearl      | Pearl Chardonnay            | 15.4         | 12.3       | ☐       | 34             | 12               |
| 11                                       | 895        | Pearl      | Pearl Chardonnay Wine       | 16.2         | 15.2       | ☐       | 2              | 6                |
| 12                                       | 893        | Pearl      | Pearl Imported Beer         | 11.6         | 8.6        | ☐       | 39             | 7                |
| 13                                       | 900        | Pearl      | Pearl Light Beer            | 10.3         | 8.3        | ☐       | 11             | 5                |
| 14                                       | 894        | Pearl      | Pearl Light Wine            | 9.67         | 6.86       | ☐       | 11             | 5                |
| 15                                       | 897        | Pearl      | Pearl Merlot Wine           | 9.01         | 7.01       | ☐       | 8              | 11               |
| 16                                       | 899        | Pearl      | Pearl White Zinfandel Wine  | 15.9         | 12.8       | ☐       | 20             | 13               |
| 17                                       | 580        | Walrus     | Walrus Chablis Wine         | 19.9         | 17.8       | ☐       | 29             | 6                |
| 18                                       | 582        | Walrus     | Walrus Chardonnay           | 9.9          | 6.89       | ☐       | 32             | 6                |
| 19                                       | 579        | Walrus     | Walrus Chardonnay Wine      | 15.7         | 13.6       | ☐       | 35             | 9                |
| 20                                       | 577        | Walrus     | Walrus Imported Beer        | 6.11         | 3.11       | ☐       | 31             | 9                |
| 21                                       | 584        | Walrus     | Walrus Light Beer           | 17.6         | 15.6       | ☐       | 31             | 6                |
| 22                                       | 578        | Walrus     | Walrus Light Wine           | 8.38         | 8.38       | ☐       | 9              | 8                |
| 23                                       | 581        | Walrus     | Walrus Merlot Wine          | 19.4         | 17.3       | ☐       | 5              | 14               |
| 24                                       | 583        | Walrus     | Walrus White Zinfandel Wine | 19.4         | 17.3       | ☐       | 10             | 7                |