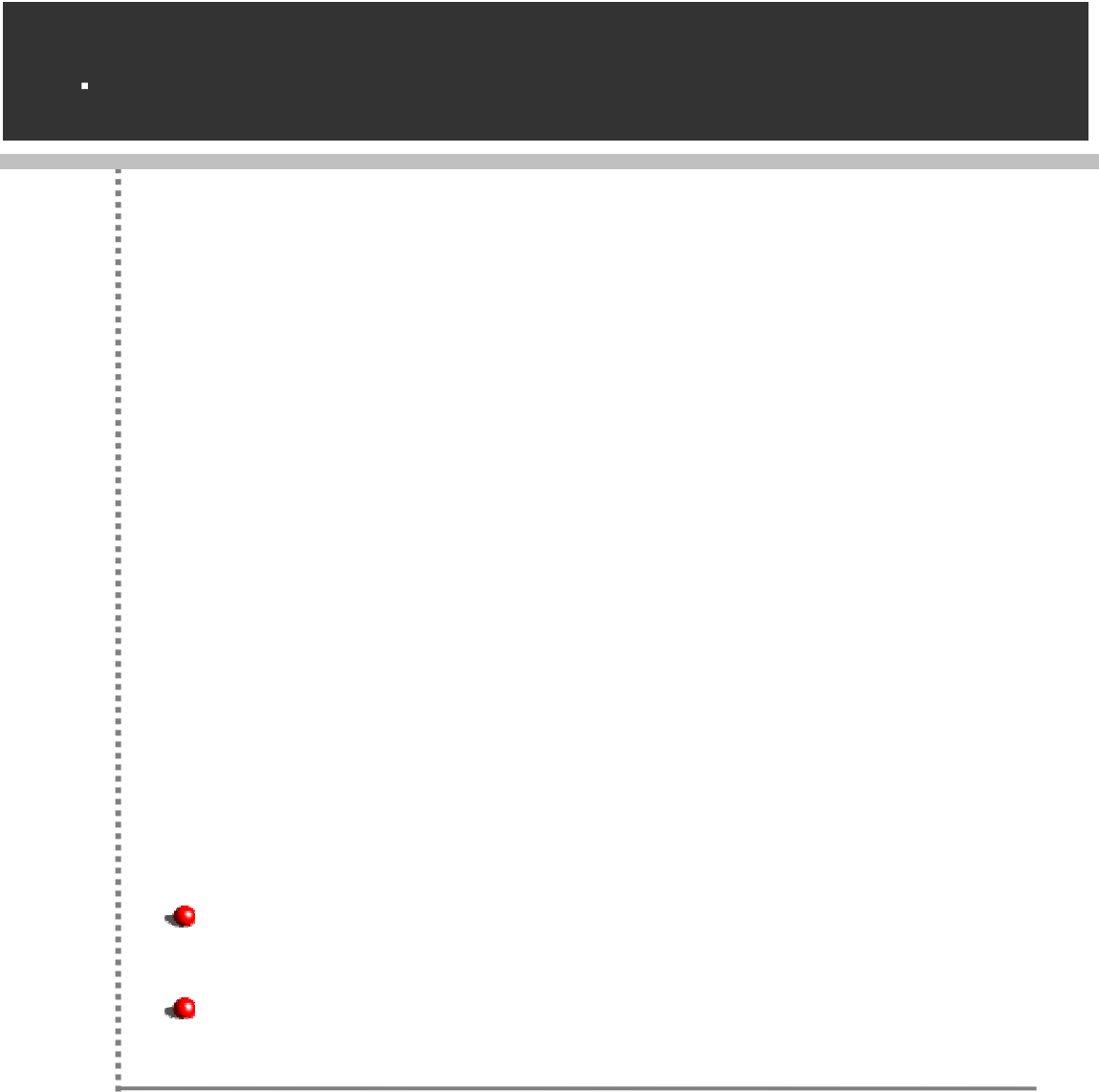
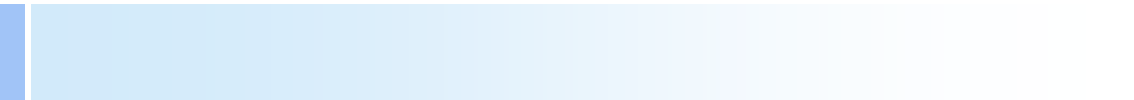
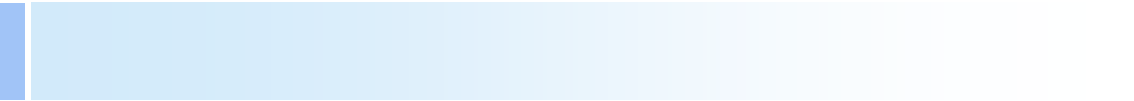


- 3
 - 4
 - 4

- 7
 - 8
 - 8
 - 9
 - 10
 - 12
 - 13
 - 13
 - 15
 - 40

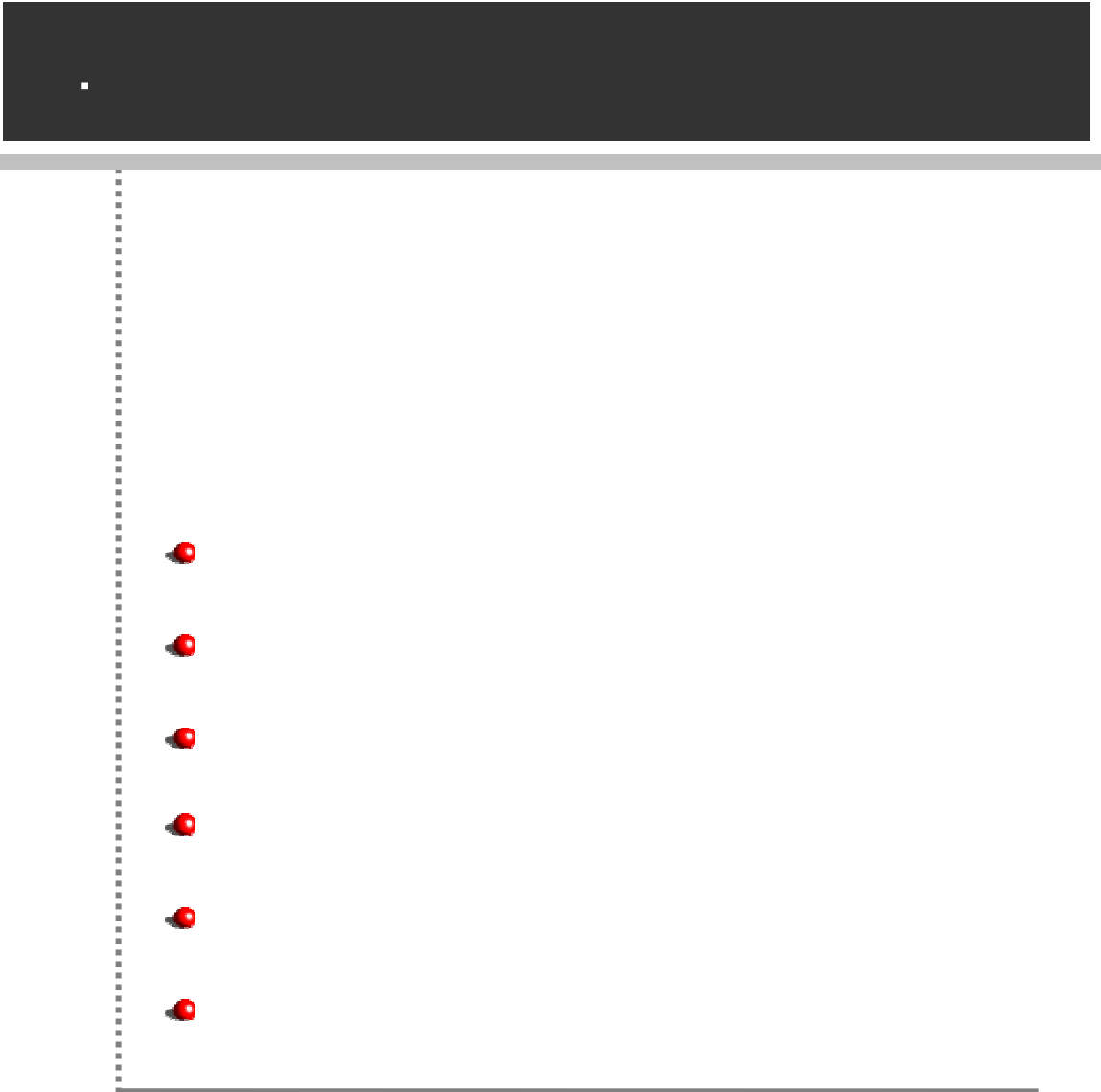


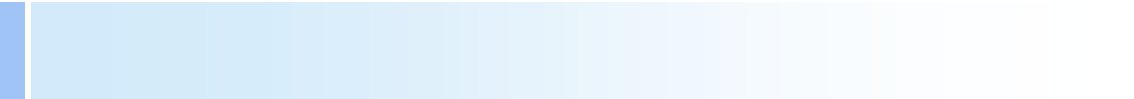
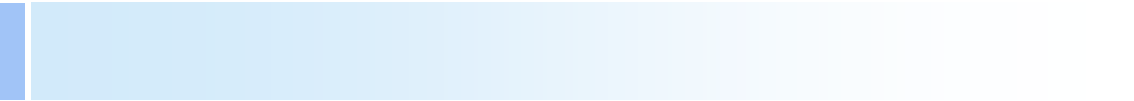


가

Manual	Description
Getting Started	
가	
	가
	가
WAS	

API	API, UDS, USL, API
	API(Application Program Interface)
가	





OS

MS Windows NT 4.0, 2000 Server, 2003 Server
: Windows 95/98/ME Unicode

CPU

Pentium II 300MHz, Pentium III 500MHz

Main Memory

128MB, 256MB

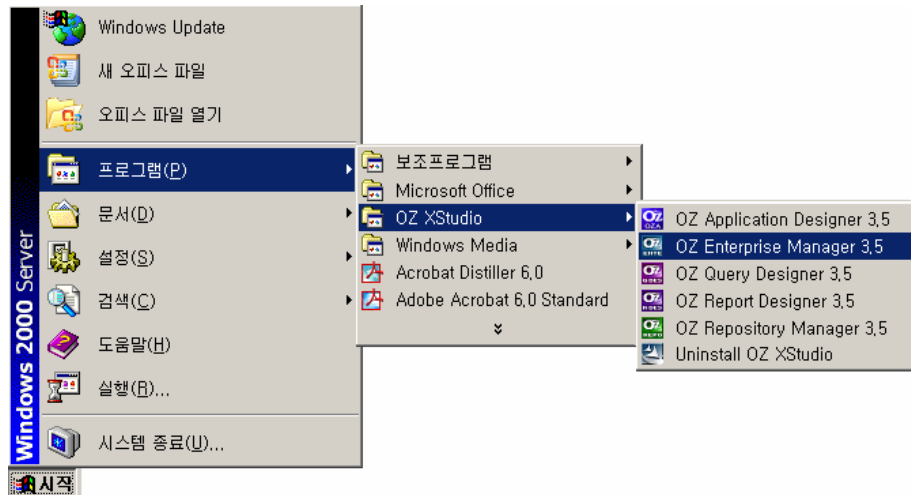
HDD

10MB

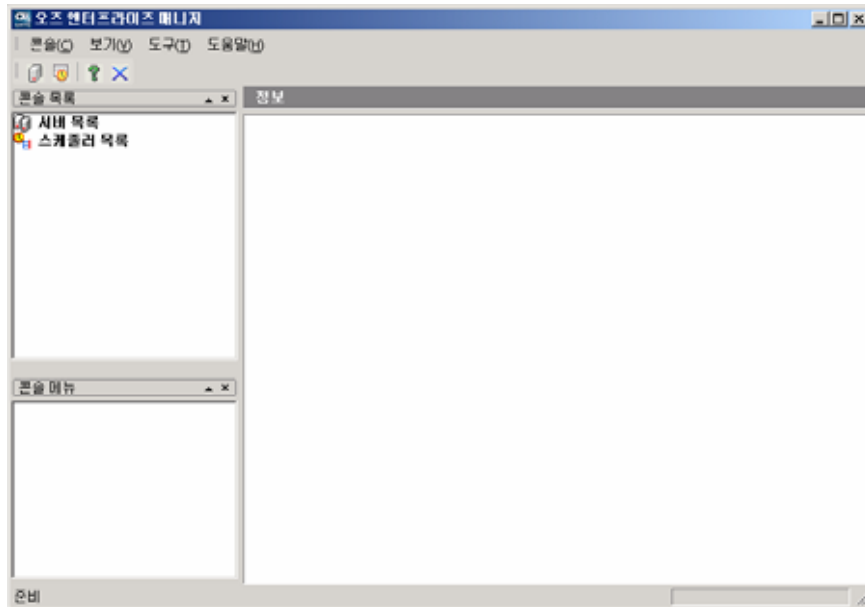
bin	OZEnterpriseManager.exe	
	OZOptWiz_vc71.dll	
	OZUSLClientDes128.dll	USL
	OZUSLClientSession.dll	
bin/res	MultiLanguageList.xml	
	em_ _ 가.dll	
	em_error_msg_ _ 가.xml	
	server_error_msg_ _ 가.xml	
	viewer_parameter_ _ 가.xml	
conf	server.conf	

- em_ _ 가 .dll , 가
ISO 가 639 .
- , em_ _ 가 .dll, em_ .dll, em.dll
, *.dll .

[] – [OZ XStudio] - [OZ Enterprise Manager 3.5]



가

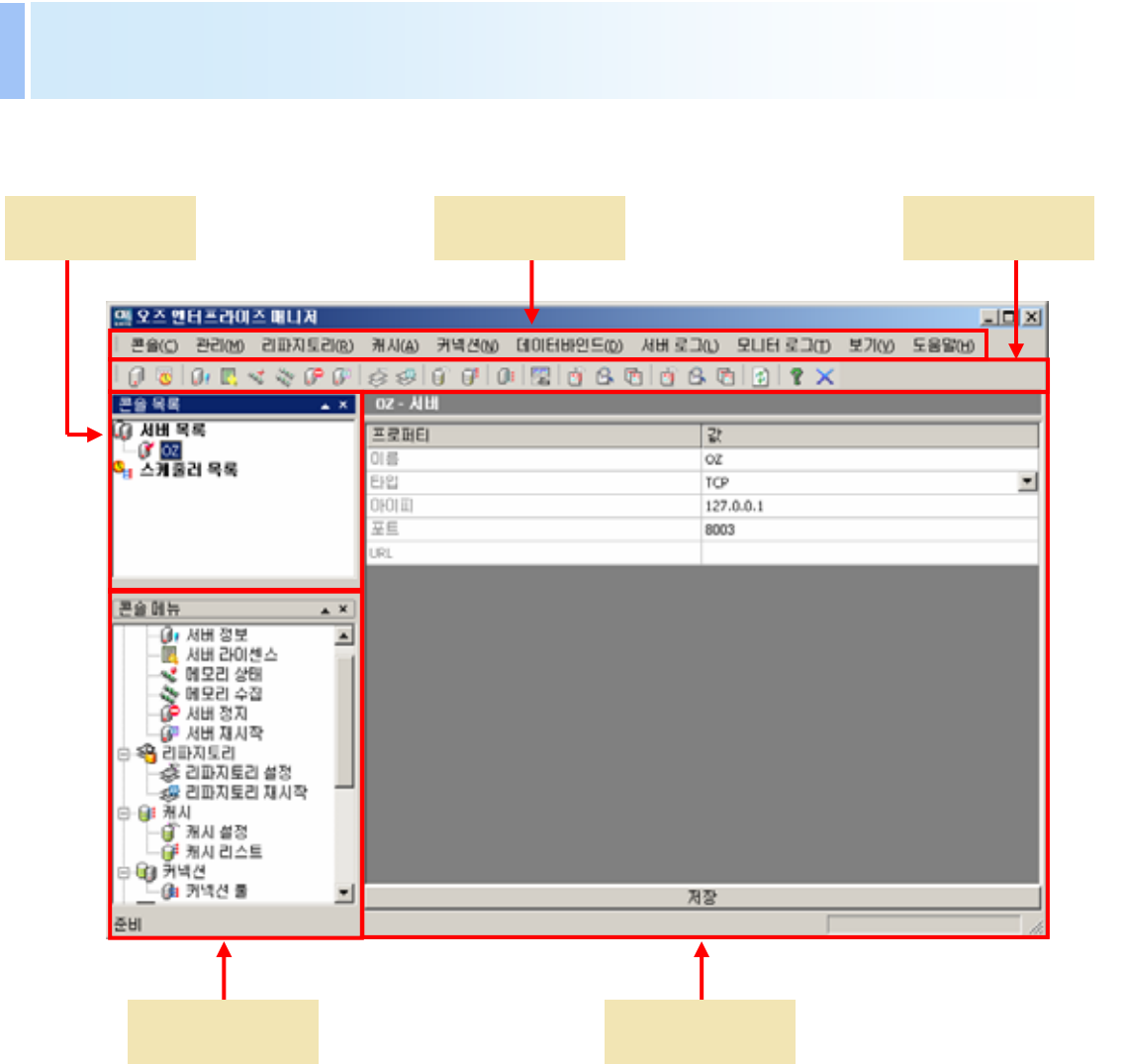


:

[] []

가 . []

가 가 .



	(pull
	down)
	가,

- 가 () 가 [] - [] 가
가 () ,
[] 가
가 .

새 서버

이름

타입

TCP

IP

127.0.0.1

포트

8003

URL

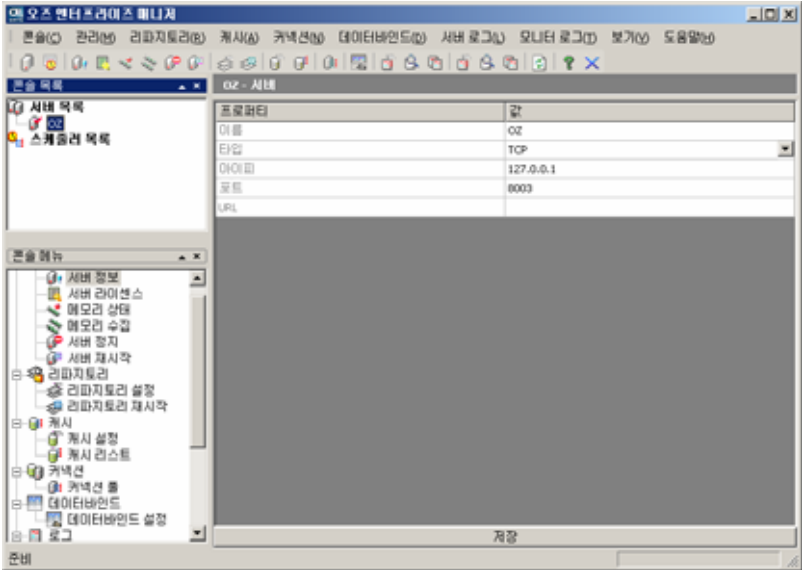
추가

취소

	: 'admin' 가
	HTTP TCP , URL
IP	TCP 가 IP
	TCP 가 TCP
URL	HTTP 가 URL URL) http://www.oz.com/ozservlet

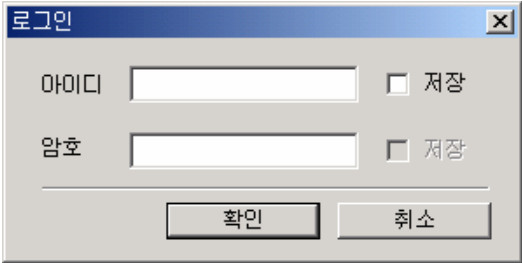
[가]

[가]



[]

[]

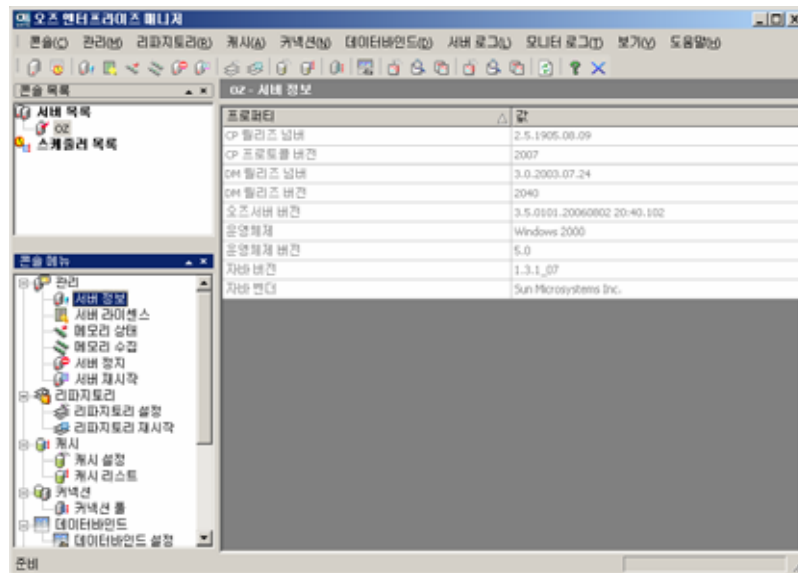


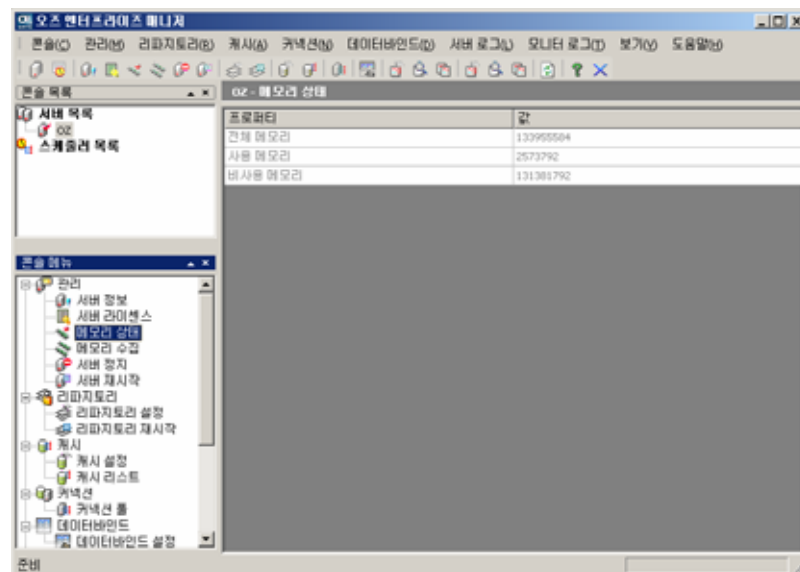
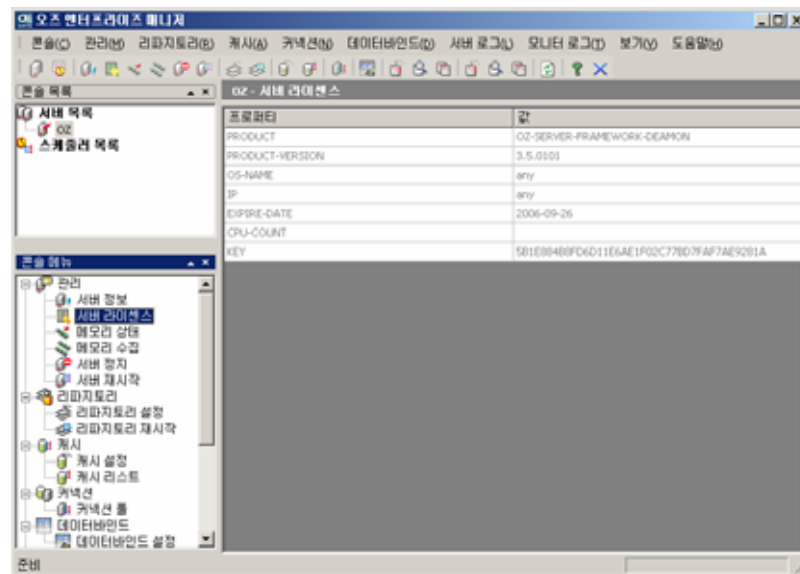
가

가

:" " "admin", " " " "admin"
, Repository Manager 가/ /

가

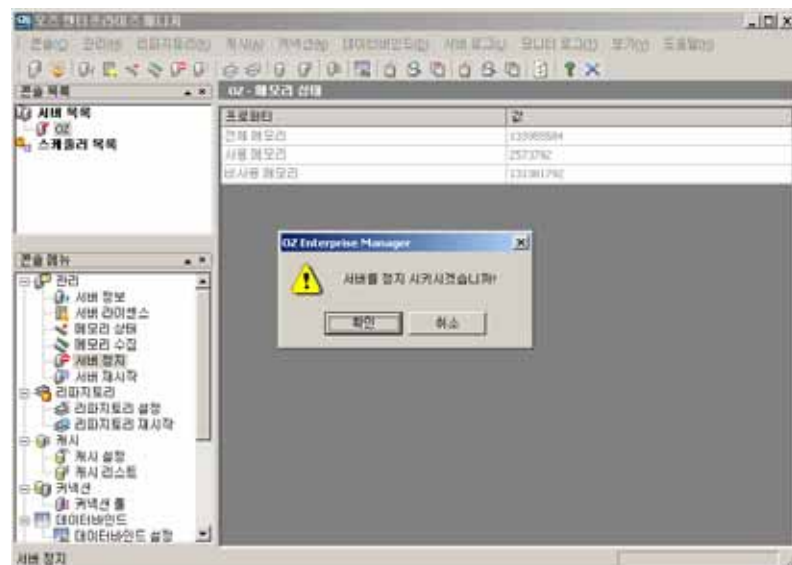
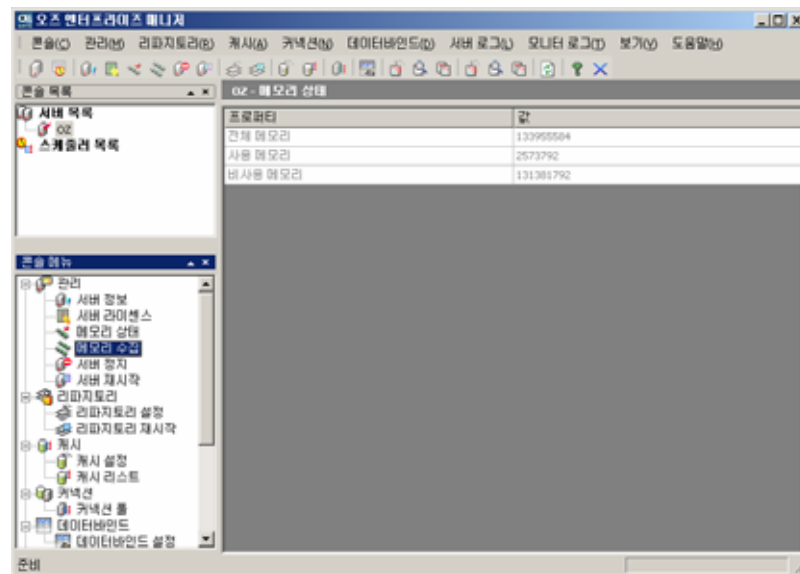




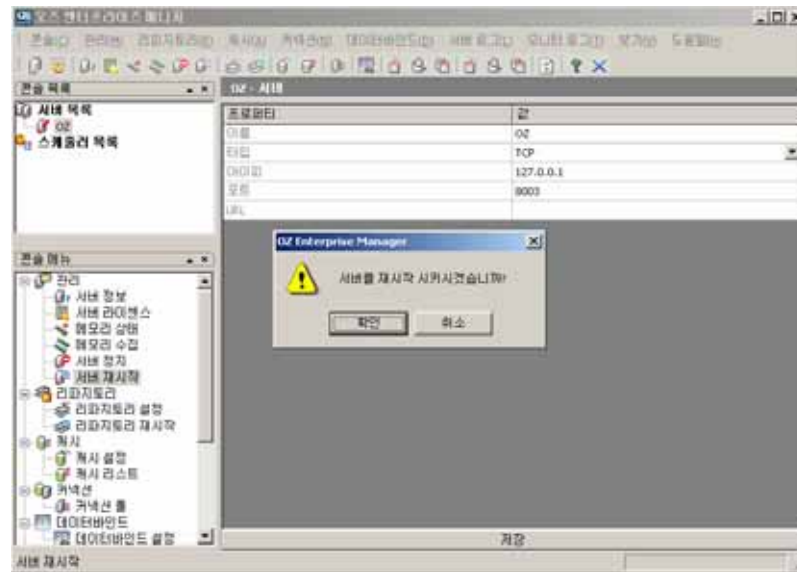
: 가

가 JVM

가

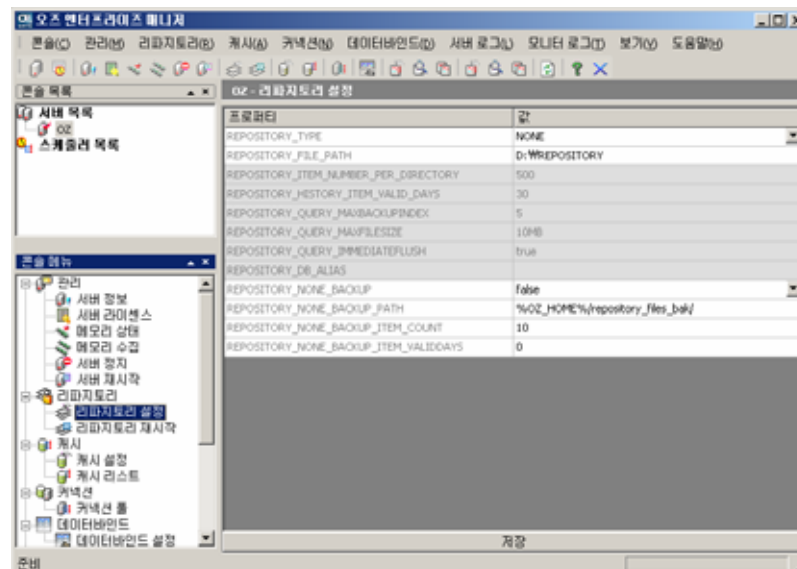


가

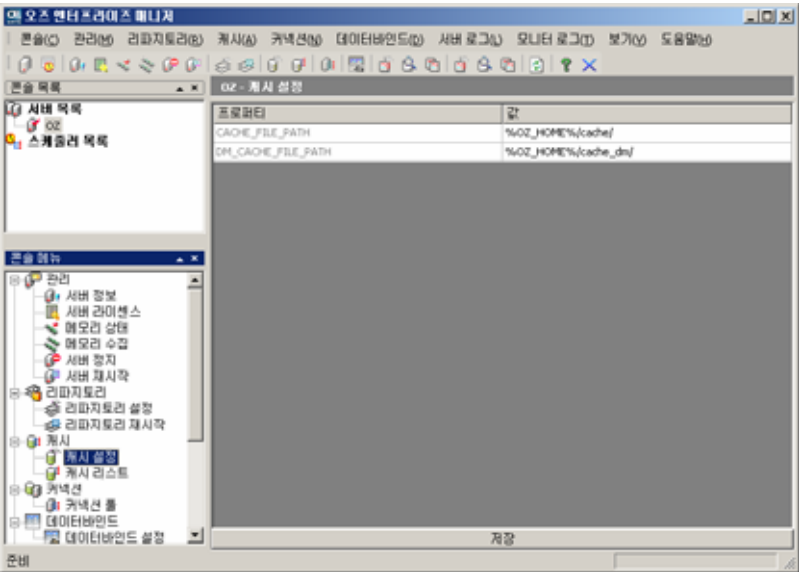


WAS

[]

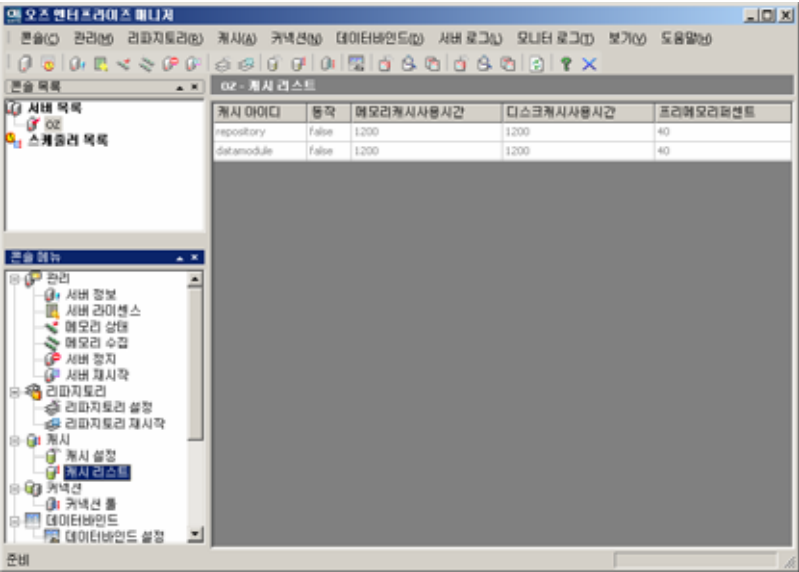


REPOSITORY_TYPE	(Builtin, RDB, NONE)
REPOSITORY_DB_ALIAS	db.properties Alias가 DB Repository
REPOSITORY_FILE_PATH	.
REPOSITORY_ITEM_NUMBER_PER_PATH	.
REPOSITORY_HISTORY_ITEM_VALID_DAYS	가
REPOSITORY_ADD_COMPRESSED_ITEM	'true'
REPOSITORY_QUERY_MAX BACKUPINDE	Builtin DB
REPOSITORY_QUERY_MAX FILESIZE	Builtin DB
REPOSITORY_QUERY_IMM IDIATEFLUSH	Builtin DB 'true'
REPOSITORY_NONE_BACK UP	None Backup
REPOSITORY_NONE_BACK UP _PATH	None Backup
REPOSITORY_NONE_BACK UP_ITEM_COUNT	None Backup
REPOSITORY_NONE_BACK UP_ITEM_VALIDDAYS	None Backup

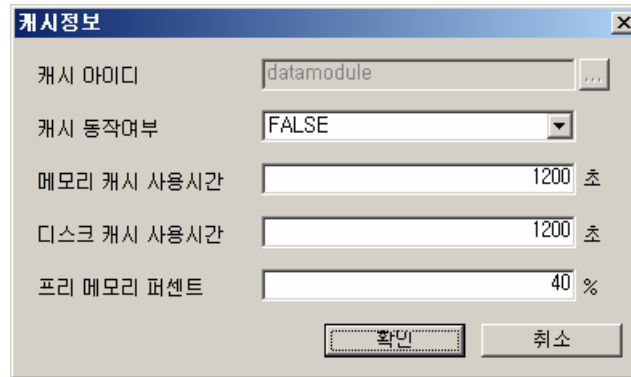


CACHE_FILE_PATH	
DM_CACHE_FILE_PATH	

[가] []



- 가
가 []
[가] []
]



캐시정보

캐시 아이디: datamodule


캐시 동작여부: FALSE

메모리 캐시 사용시간: 1200 초

디스크 캐시 사용시간: 1200 초

프리 메모리 퍼센트: 40 %

확인 취소

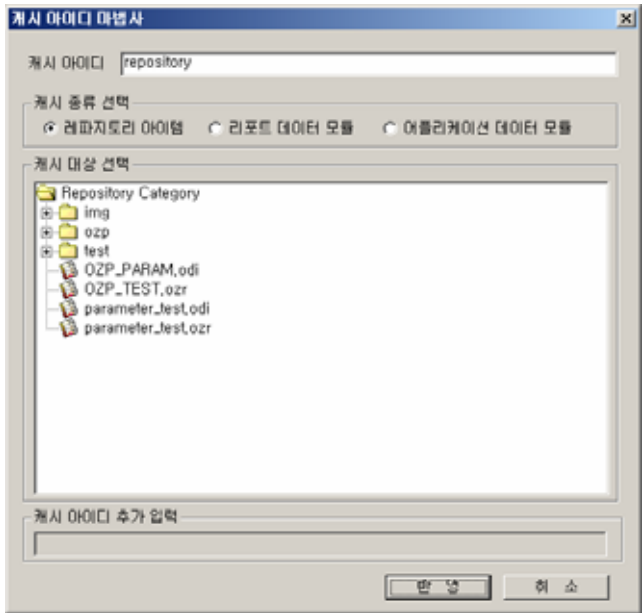
	
	'true/false' 가
	(:)

- cachemngr.properties

-

-

:
(...)
가



가	가
	가

가

```
datamodule.report.[CategoryName].[ItemName].[FetchMode].
[ParameterName_1 = ParameterValue_1]. ...
[ParameterName_n = ParameterValue_n].
[DataSetName_1 = MaxRow_1]. ... [DataSetName_n = MaxRow_n].
[InvalidSetName_1]. ... [InvalidSetName_n]
```

datamodule.report	가
[CategoryName]	
[ItemName]	
[FetchMode]	'DM_CONCURRENT_FETCH' 'DM_BATCH_FETCH'
[ParameterName_1 = ParameterValue_1] ... [ParameterName_n = ParameterValue_n]	가 [=]
[DataSetName_1 = MaxRow_1] ... [DataSetName_n = MaxRow_n]	[=]

[InvalidSetName_1]	
--------------------	--

'test1.odi' 'test1.odi' (/)
' DM_BATCH_FETCH' , 가 ' , ' '
, ' , ' ,
가

datamodule.report.[/].[test1.odi].[DM_BATCH_FETCH].['=' '].[
=2004].[=100].[=100][]

가

datamodule.application.[CategoryName].[ItemName].
[DataSetName].[DataSetNumber].[FetchMode].
[ParameterName_1 = ParameterValue_1]. ...
[ParameterName_n = ParameterValue_n].
[DataSetName_1 = MaxRow_1]. ... [DataSetName_n = MaxRow_n].
[MasterDataSetParameterName_1 =
MasterDataSetParameterValue_1]. ...
[MasterDataSetParameterName _n = MasterDataSetParameterValue _n].

datamodule.report	가
[CategoryName]	
[ItemName]	
[FetchMode]	'DM_CONCURRENT_FETCH' 'DM_BATCH_FETCH'
[ParameterName_1 = ParameterValue_1] ... [ParameterName_n = ParameterValue_n]	가 [=]

[DataSetName_1 = MaxRow_1] ... [DataSetName_n = MaxRow_n]	 [=] .
[MasterDataSetParam eterName_1 = MasterDataSetParam eterValue_1] ... [MasterDataSetParam eterName_n = MasterDataSetParam eterValue_n]	 가 [=] . - .

'test1.odi' , 'test1.odi'
 'MasterDetail' , 'DM_CONCURRENT_FETCH'
 , , , , 0 , '
 , '가 , , '
 가 ' ,

```

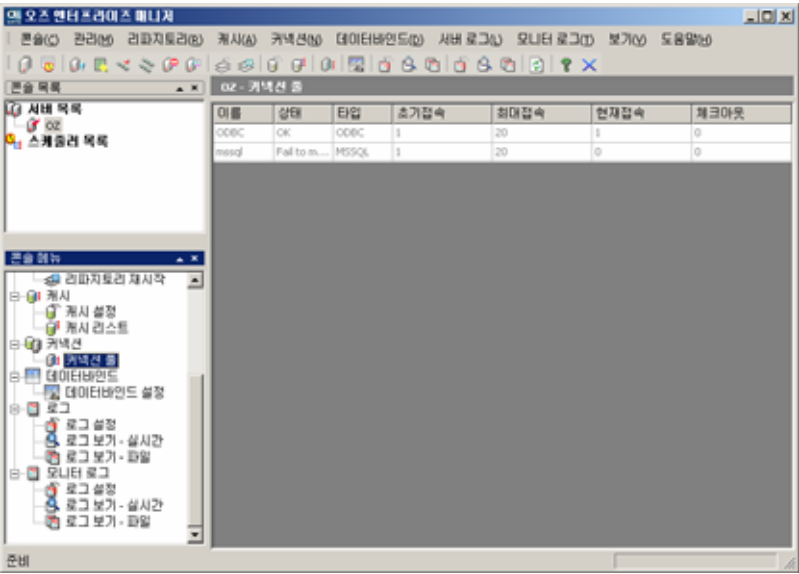
datamodule.application.[/MasterDetail].[test1.odi].[
].[0].[DM_CONCURRENT_FETCH].[가=2004].[=100].[
='Silver']
    
```

■

DB

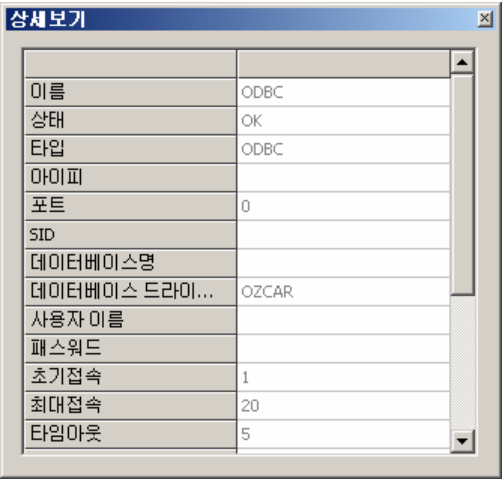
[]

가,



•

[]



" " 가"

•

가
[가] []
가 가 . DB 가 .
➤

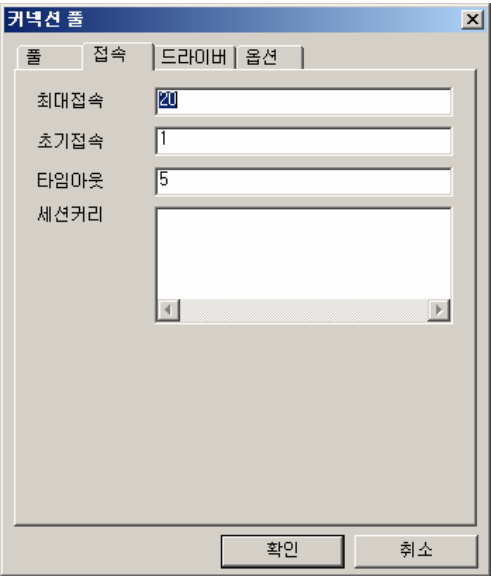
키넥션 폼 [X]

풀 | 접속 | 드라이버 | 옵션

이름
 타입
 주소
 포트
 데이터베이스 드라이버 종류
 SID
 데이터베이스명
 사용자 이름
 패스워드
 확인

	alias
	.
,	IP
	JDBC) thin (ODBC ODBC DSN)
	DBMS . (SID)
	DBMS DB .
	.
	.
	.





	가 가 DB Connection .
	DB Connection .
	Maxconns Connection .(:)
	db.properties .



URL, . 가 가

커넥션 풀

풀 | 접속 | 드라이버 | 옵션

☒ 드라이버 설정 사용

드라이버:

URL:

프로퍼티:

확인 취소

	JDBC	
URL	JDBC	URL
	JDBC	connection property string



가

가

커넥션 풀

풀 | 접속 | 드라이버 | 옵션

서버로 연결 요청시
항상 연결 테스트를 시도하시겠습니까?

☒ **항상 연결 테스트 시도하기**

아래에 테스트할 질의문을 입력하십시오.

주의) 빠르고 간단히 조회가능한 질의문을 입력하십시오.
복잡한 연산이나 대용량의 데이터베이스 테이블의 조
회는 접속 수행시간에 지연을 초래하게 됩니다.

확인 취소

	가 가

● [] [가]

키넥션 풀

풀 접속 드라이버 옵션

이름

타입

주소

포트

데이터베이스 드라이버 종류

SID

데이터베이스명

사용자 이름

패스워드

확인

ORACLE

127.0.0.1

1521

thin

확인

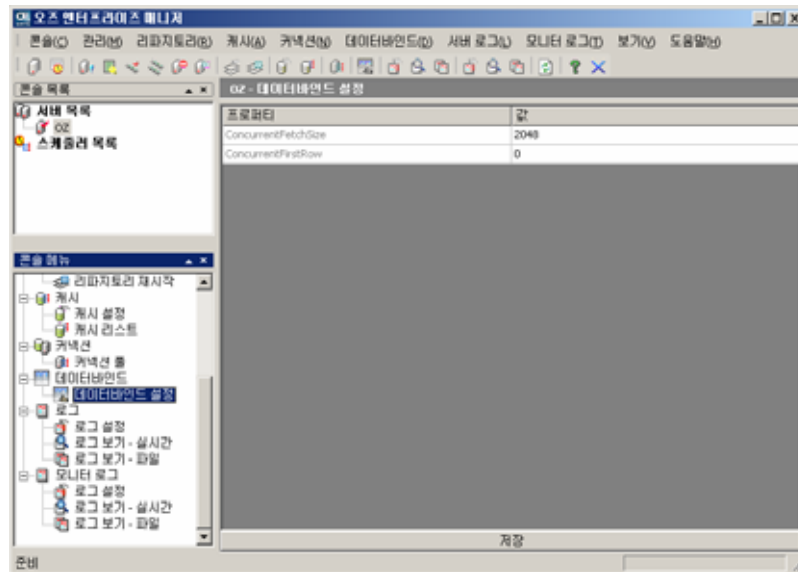
취소

● []

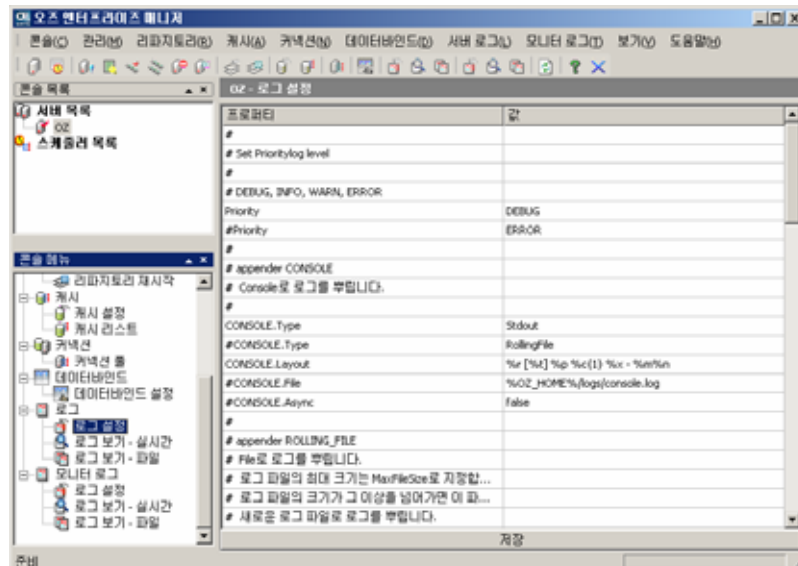
■

"databind.properties" "ConcurrentFetchSize"

"ConcurrentFirstRow"

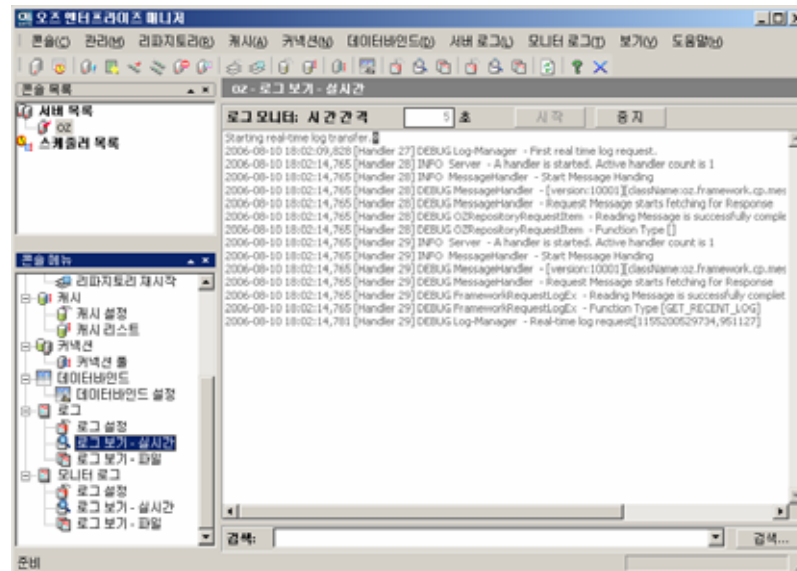


[]

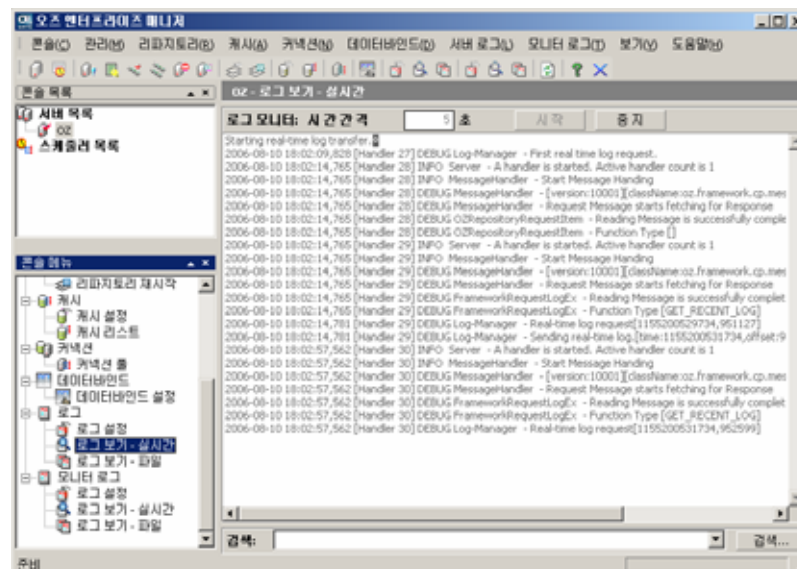


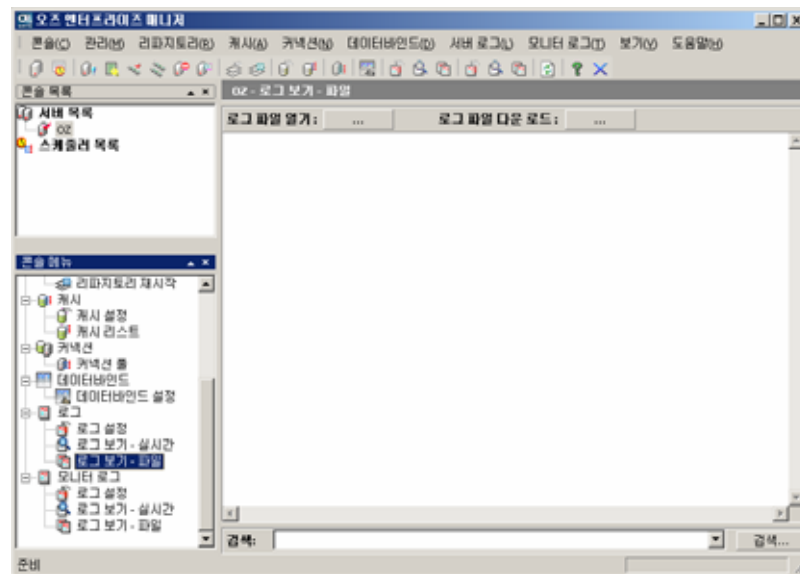
"log.properties"

[]



[] ()



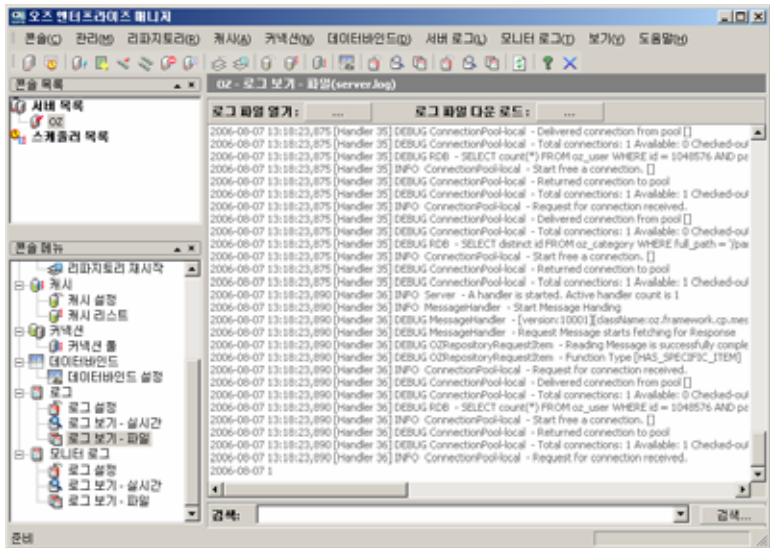


[...]

가

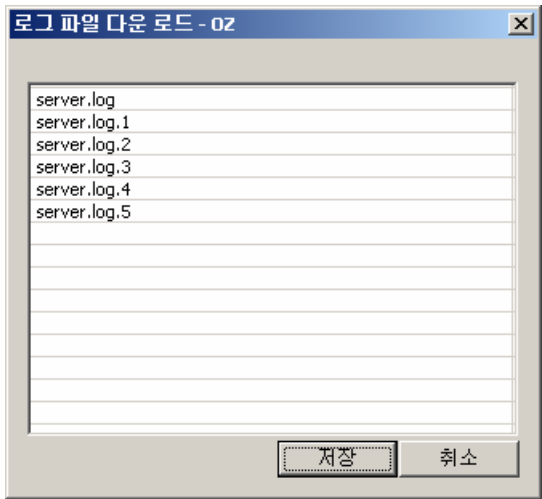


[]



[...]

가

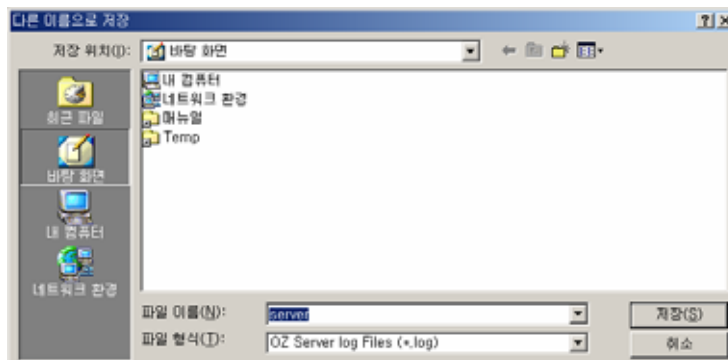


<Shift>

<Ctrl>

[]

가

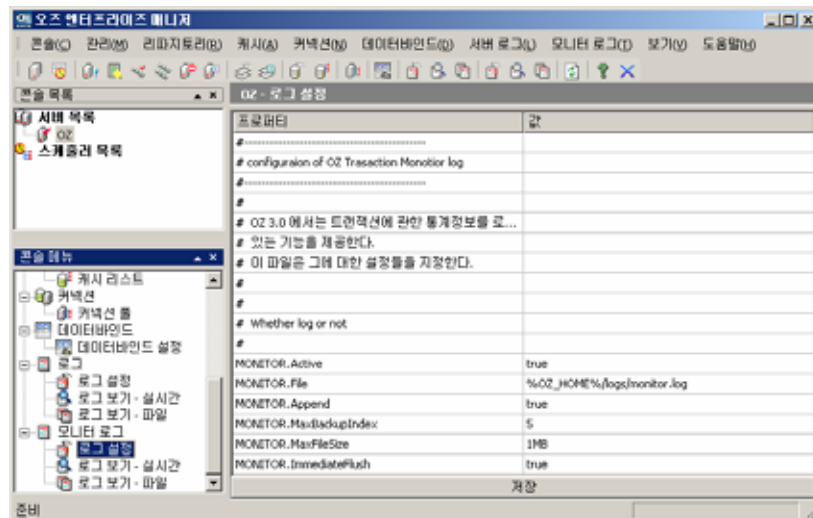


[]

```
➤ 1)
"server.log", "server.log.1", "server.log.2"
[ ] "test.log", "test.log.1",
"test.log.2"

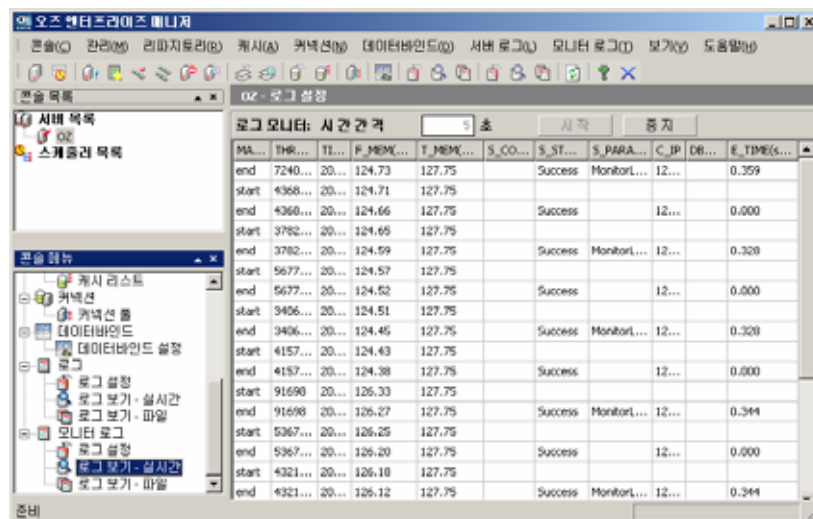
➤ 2)
"server.log", "server.log.1", "server.log.2"
[ ] "server.log",
"server.log.1", "server.log.2"
```

[]

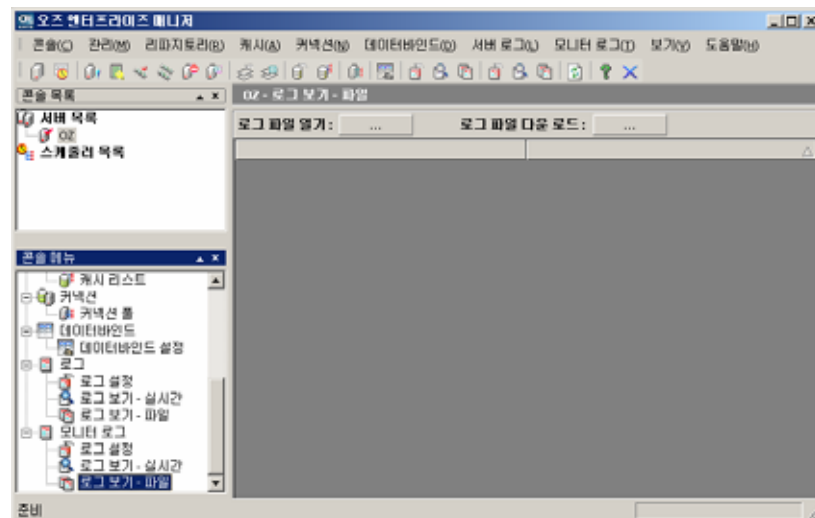


"log.properties"

[]



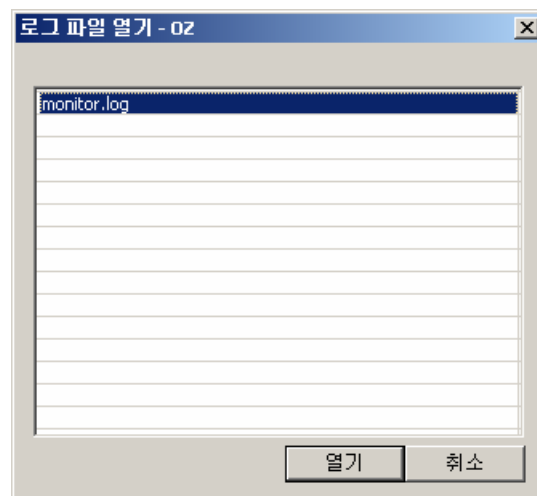
[] ()



●

[...]

가

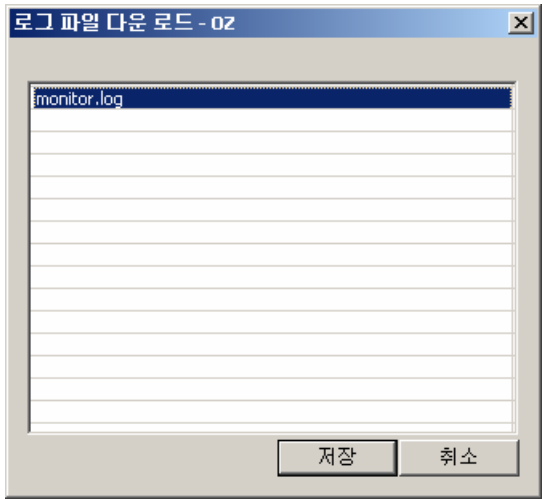


[]



[...]

가

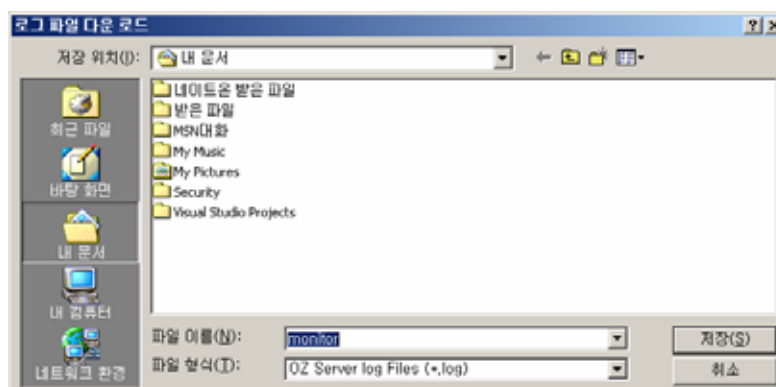


<Shift>

<Ctrl>

[]

가



[]

- ```
➤ 1)
"monitor.log", "monitor.log.1", "monitor.log.2"
[] "test.log", "test.log.1",
"test.log.2"
➤ 2)
"monitor.log", "monitor.log.1", "monitor.log.2"
[] "monitor.log",
"monitor.log.1", "monitor.log.2"
```

■

—

[ ]

—

[ ]

—

—

—

(F5)

■

■ 가


가 [ ] -> [ 가]

,

[

가]

가 (🕒)



새 스케줄러

이름

IP

포트

추가 취소

가  
[     ]  
(     )

오즈 서버 로그인

오즈 서버 선택

02

오즈 서버 정보

이름  
02

아이피  
127.0.0.1

포트  
8003

URL

사용자 아이디 ☐ 저장

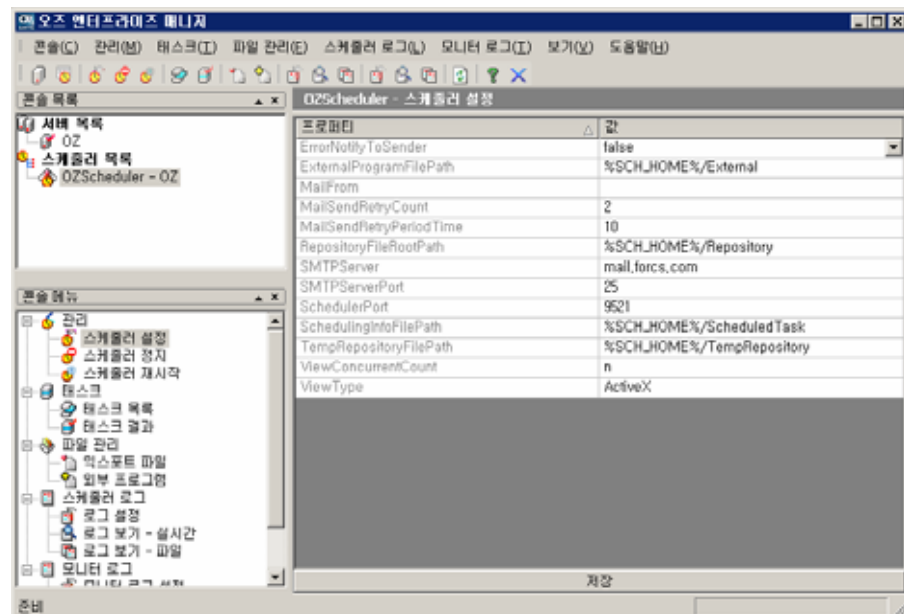
암호 ☐ 저장

확인 취소

가  
[ ]

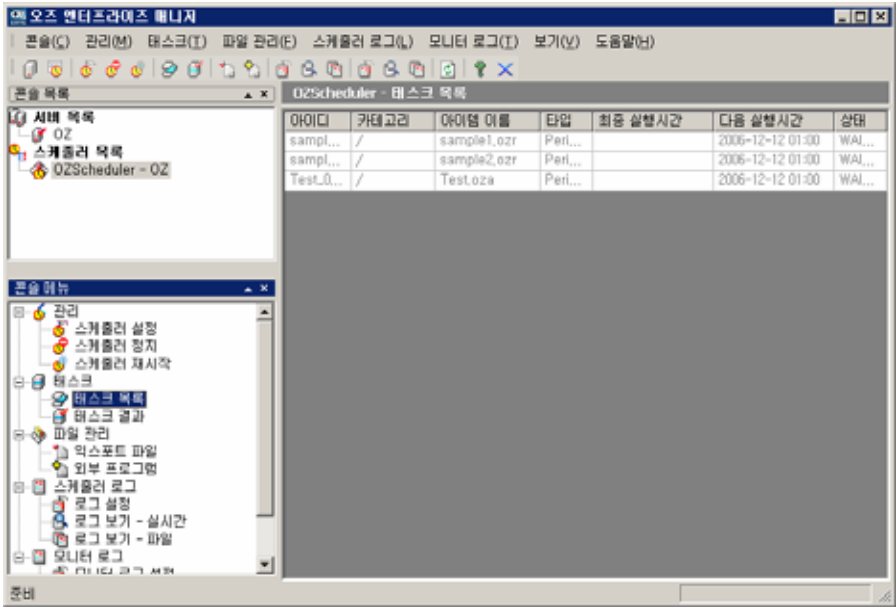


[     ]



| ErrorNotifyToSender     |              |
|-------------------------|--------------|
| ExternalProgramFilePath |              |
| MailFrom                |              |
| MailSendRetryCount      |              |
| MailSendRetryPeriodTime |              |
| RepositoryFileRootPath  | Export       |
| SMTPServer              | SMTP      IP |
| SMTPServerPort          | SMTP         |
| SchedulerPort           |              |
| SchedulingInfoFilePath  |              |
| TempRepositoryFilePath  |              |
| ViewConcurrentCount     |              |
| ViewType                |              |

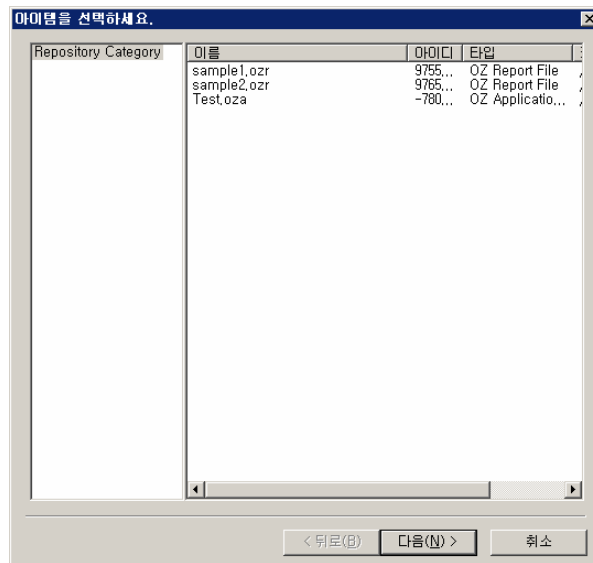
가, , , ,



|  |                |
|--|----------------|
|  |                |
|  |                |
|  |                |
|  |                |
|  | WAITING, PAUSE |

가

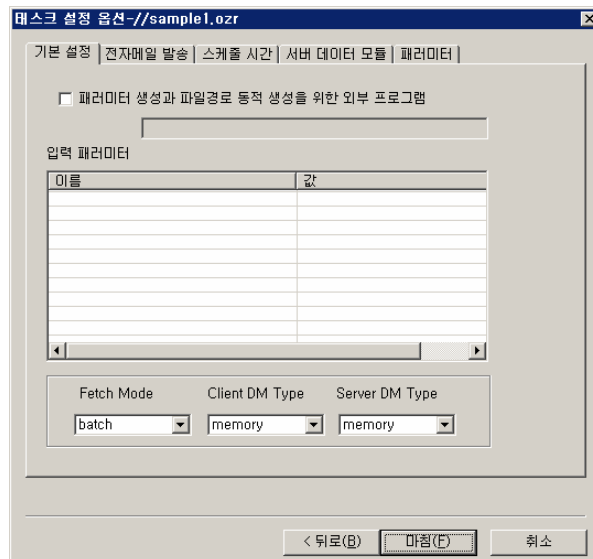
가



[     ]

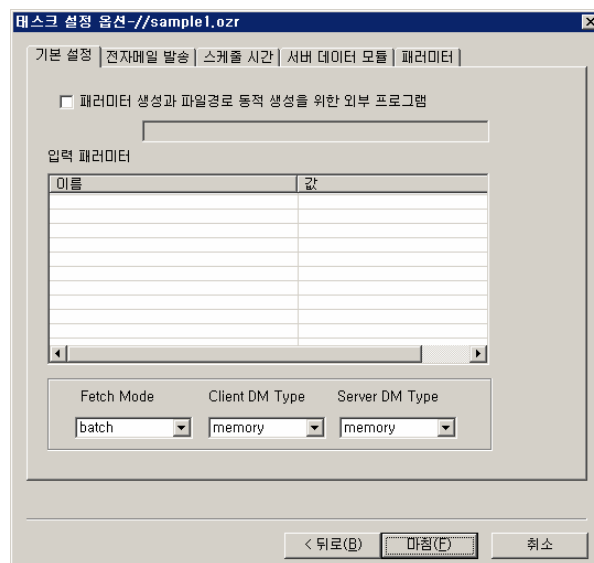
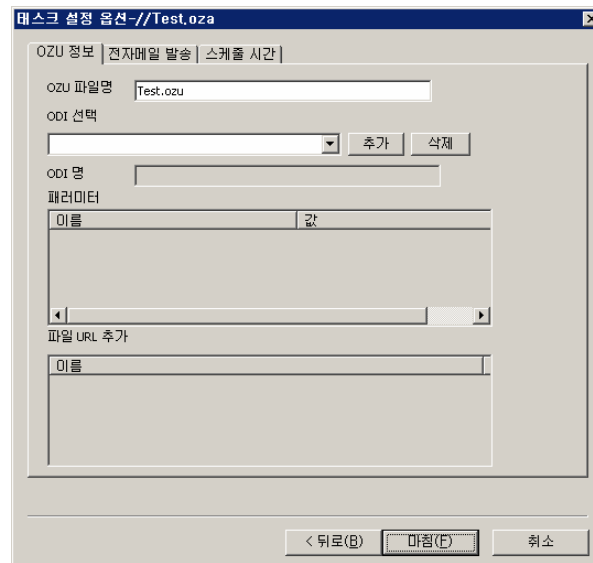
가

가



OZU

가


$$\left[ \begin{array}{c} \text{ } \\ \text{ } \\ \text{ } \end{array} \right] \left( \begin{array}{c} \text{ } \\ \text{ } \\ \text{ } \end{array} \right)$$

[ , Fetch , Client DM , Server DM

- 'fetch\_type' 'concurrent' 'client\_dm\_type'  
'normal' , 'normal' 'memory'
- 'scheduler\_server.properties' 'ViewType=NONE'

가

- 가 " ( , PDF , OZD )" " 1 가

| \$OZ.#D/ /#D \$ |                         |
|-----------------|-------------------------|
| \$OZ ~ \$       |                         |
| #D/ ~ /#D       |                         |
|                 | [ ]<br>"Date<br>Format" |
|                 | +_n_day (n_day : )      |

[Date Format]

| G | Year designator | Text   | AD   |
|---|-----------------|--------|------|
| y | Year            | Number | 1996 |

|          |                      |                |                       |
|----------|----------------------|----------------|-----------------------|
| <b>M</b> | Month in year        | Text or Number | July & 07 (locale . ) |
| <b>d</b> | day in month         | Number         | 10                    |
| <b>h</b> | hour in am/pm (1~12) | Number         | 12                    |
| <b>H</b> | Hour in day (0~23)   | Number         | 0                     |
| <b>m</b> | Minute in hour       | Number         | 30                    |
| <b>s</b> | Second in minute     | Number         | 55                    |
| <b>S</b> | Millisecond          | Number         | 978                   |
| <b>E</b> | day in week          | Text           | Tuesday(locale . ' ') |
| <b>D</b> | day in year          | Number         | 189                   |
| <b>F</b> | day of week in month | Number         | 2 (2nd Wed in July)   |
| <b>w</b> | Week in year         | Number         | 27                    |
| <b>W</b> | Week in month        | Number         | 2                     |
| <b>a</b> | am/pm marker         | Text           | PM                    |
| <b>k</b> | hour in day (1~24)   | Number         | 24                    |
| <b>K</b> | hour in am/pm(0~11)  | Number         | 0                     |
| <b>z</b> | Time zone            | Text           | Pacific Standard Time |
| <b>'</b> | Escape for text      | Delimiter      | '                     |
| <b>"</b> | Single quote         | Literal        | "                     |

2002 10 2 가

|  |                                                                                      |
|--|--------------------------------------------------------------------------------------|
|  | (FromDate, ToDate)                                                                   |
|  | ' , '                                                                                |
|  | FromDate=\$OZ.#D/yyyy-MM-dd 00:00:00/#D\$<br>ToDate=\$OZ.#D/yyyy-MM-dd 23:59:59/#D\$ |
|  | FromDate=2002-10-02 00:00:00<br>ToDate=2002-10-02 23:59:59                           |
|  |                                                                                      |
|  | ' - '                                                                                |

|  |                                        |
|--|----------------------------------------|
|  | \$OZ.#D/yyyy-MM-dd/#D\$.xls            |
|  | 2002-10-02.xls                         |
|  |                                        |
|  |                                        |
|  | ReportName_\$OZ.#D/yyyy-MM-dd/#D\$.sdm |
|  | ReportName_2002-10-02.sdm              |
|  | PDF 1                                  |
|  | 가                                      |
|  |                                        |
|  | pdf                                    |
|  | \$OZ.#D/yyyyMMdd/#D+1\$.pdf            |
|  | 20021001.pdf                           |

- 2

|                |                                   |
|----------------|-----------------------------------|
| \$OZ.#P_       | ex) \$OZ.#P_FromDate = 2002-10-01 |
| \$OZ.#EXF_USER | ex) \$OZ.#EXF_DM = MyData.sdm     |
| \$OZ.#EXF_XLS  | ex) \$OZ.#EXF_XLS = MyExcel.xls   |
| \$OZ.#EXF_OZD  | OZD                               |
| \$OZ.#EXF_PDF  | PDF                               |
| \$OZ.#EXF_CSV  | CSV                               |
| \$OZ.#EXF_HTML | HTML                              |
| \$OZ.#EXF_JPG  | JPG                               |
| \$OZ.#EXF_PPT  | PPT                               |
| \$OZ.#EXF_SVG  | SVG                               |

|                |      |
|----------------|------|
| \$OZ.#EXF_TEXT | TEXT |
| \$OZ.#EXF_TIFF | TIFF |
| \$OZ.#EXF_WORD | WORD |

- OZU  
OZU , ODI

타스크 설정 옵션 -//Test.ozu

OZU 정보 | 전자메일 발송 | 스케줄 시간

OZU 파일명 Test.ozu

ODI 선택

ODI 명

패러미터

| 이름 | 값 |
|----|---|
|----|---|

파일 URL 추가

| 이름 |
|----|
|----|

< 뒤로(B)    마침(F)    취소

ozu , [ 가] OZA ODI  
가 .

타스크 설정 옵션 -//Test.ozu

OZU 정보 | 전자메일 발송 | 스케줄 시간

OZU 파일명 Test.ozu

ODI 선택

Test.odi    추가    삭제

ODI 명 Test

패러미터

| 이름           | 값 |
|--------------|---|
| PROJECTID    |   |
| PROJECTTITLE |   |
| ReqIDQuery   |   |

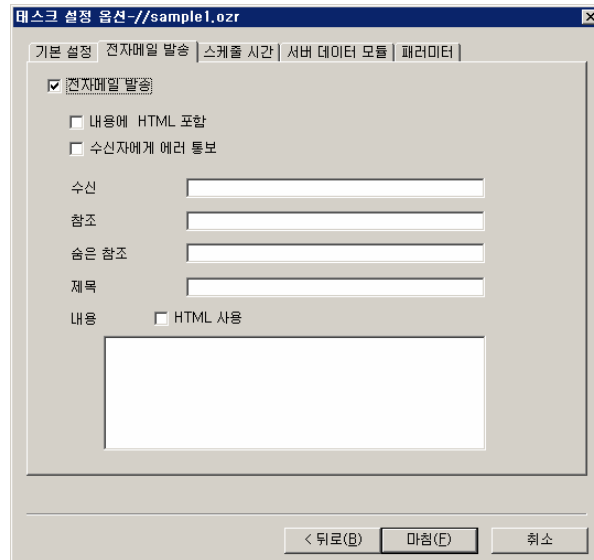
파일 URL 추가

| 이름 |
|----|
|----|

< 뒤로(B)    마침(F)    취소

가 가 ODI ,





[ HTML ] PDF OZD, XLS Export HTML

[ ] 가

[HTML ] HTML

타스크 설정 옵션 - //sample1.ozr

기본 설정 | 전자메일 발송 | 스케줄 시간 | 서버 데이터 모듈 | 패러미터

스케줄 타입

☐ 즉시 실행

☐ 한번 실행

☒ 주기적 실행

주기설정

시작: 2006-12-11

종료: 9999-12-31

☒ 일별

☒ 매 1 일 마다

☐ 주별

☐ 평일마다

☐ 월별

수행시간

☒ 하루 한번

수행: 오전 1:00

☐ 하루 여러번

시작: 오전 12:00

종료: 오후 11:00

시간간격: 0:00

☐ 사용자 정의

예) 1:00,11:00,21:30 (빠른시간순서대로 모두 붙여적습니다)

< 뒤로(B)

마침(E)

취소

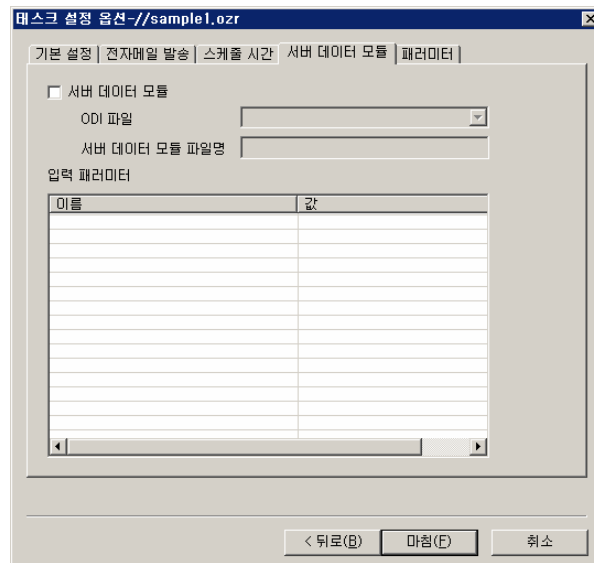
|  |  |                   |
|--|--|-------------------|
|  |  |                   |
|  |  | .                 |
|  |  | .                 |
|  |  | .                 |
|  |  | .                 |
|  |  | ( '31 ' )         |
|  |  | ( ' , )           |
|  |  | ( ' , ' )         |
|  |  | 가 ) 1 5 20 1,5,20 |
|  |  |                   |
|  |  |                   |

50

FORCS Co., LTD

|  |  |                                            |
|--|--|--------------------------------------------|
|  |  | ( )<br>) AM 1 30 , PM 5 10<br>01:30, 17:10 |
|--|--|--------------------------------------------|

# SDM



[ ] 가

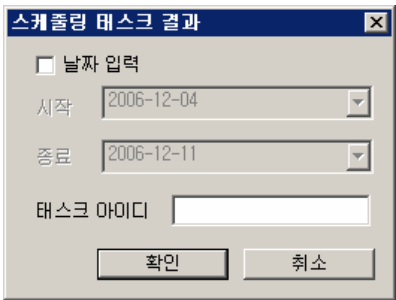
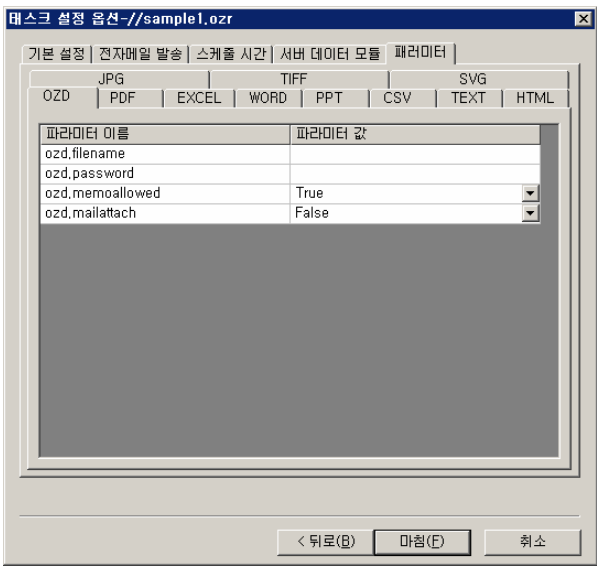
. [ ]

(.sdm) . (

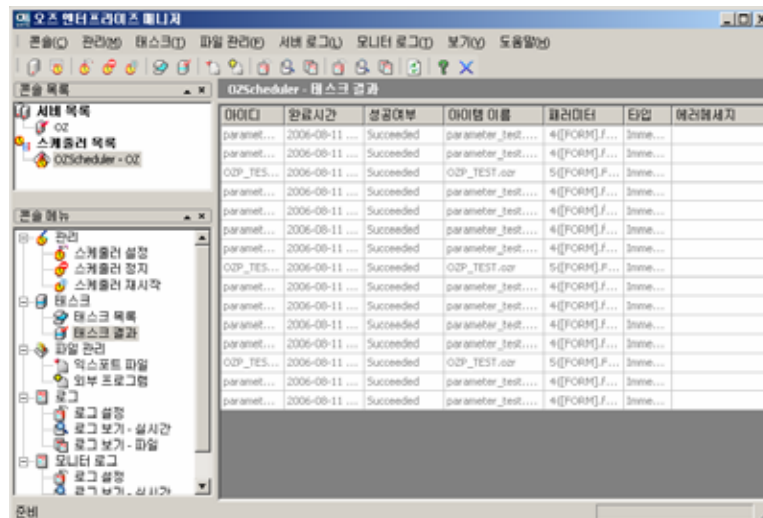
' ' ' ' ( )'

sdm

가 . / .. / ).



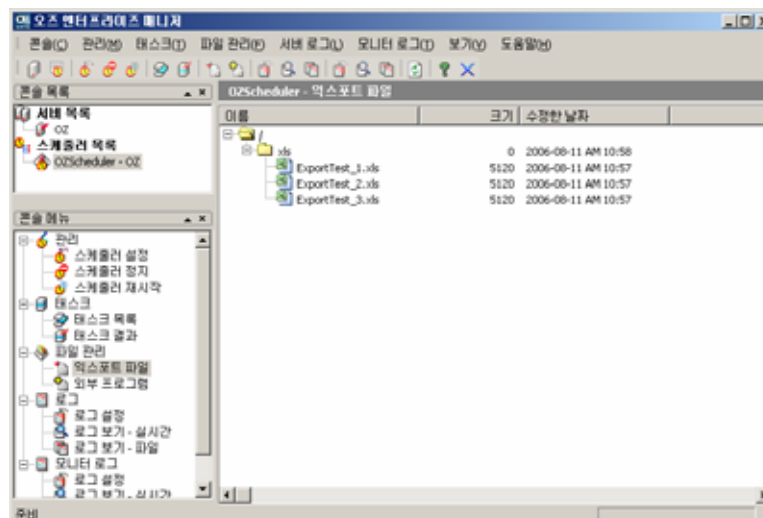
[   ]      [   ]



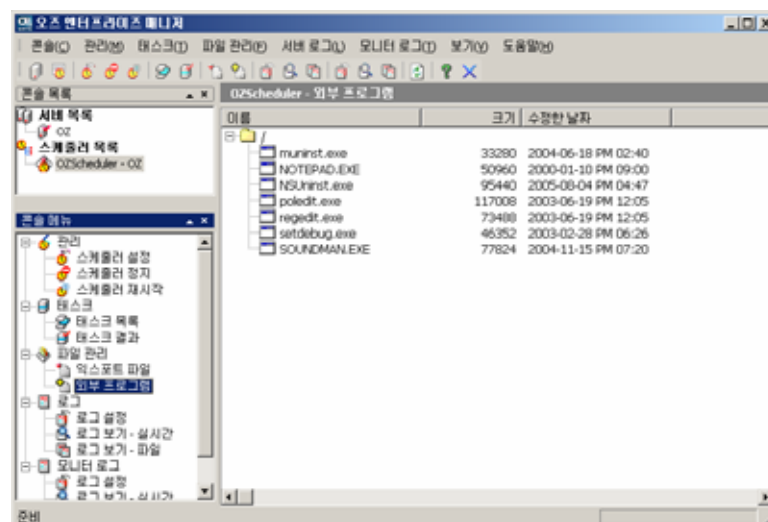
[ ]

[ ] [ ]

가 [ ]



[ ]



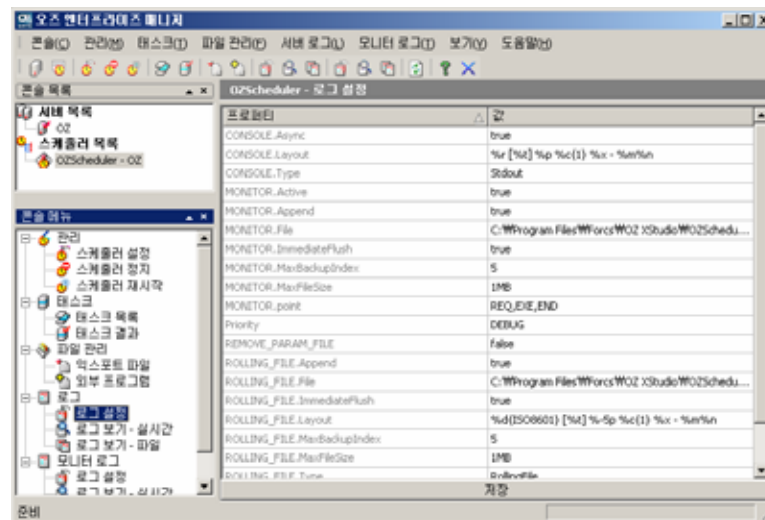
●

[                      ]

●

■

[                      ]

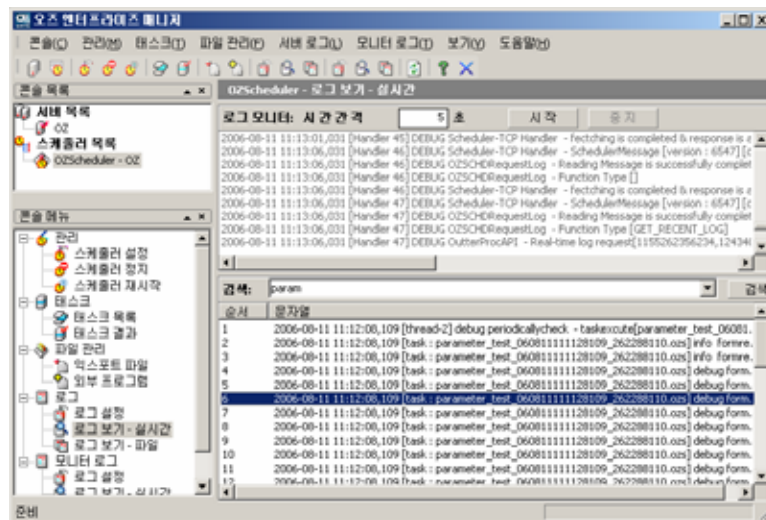
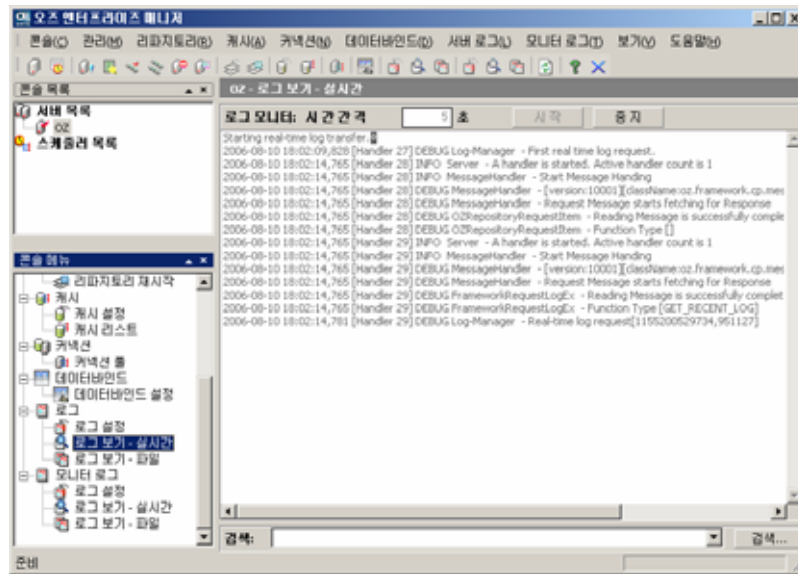


"

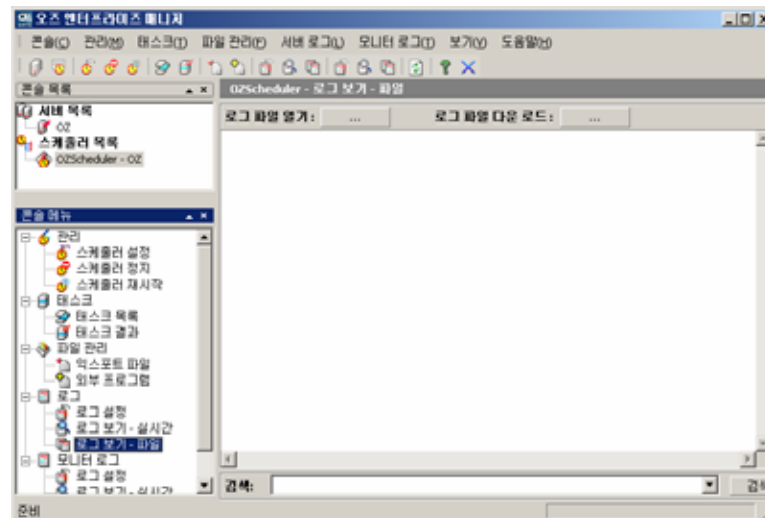
"

[                      ]

(   )

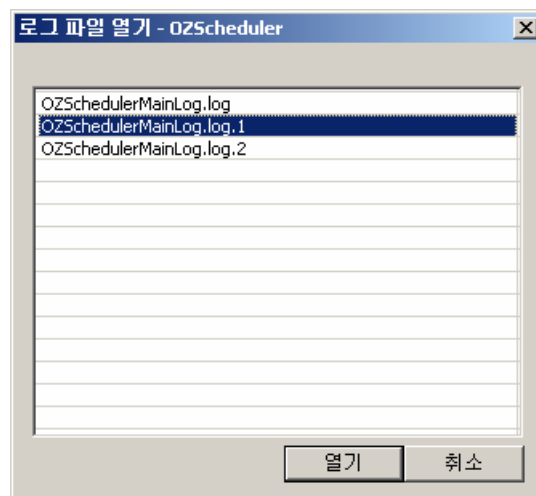




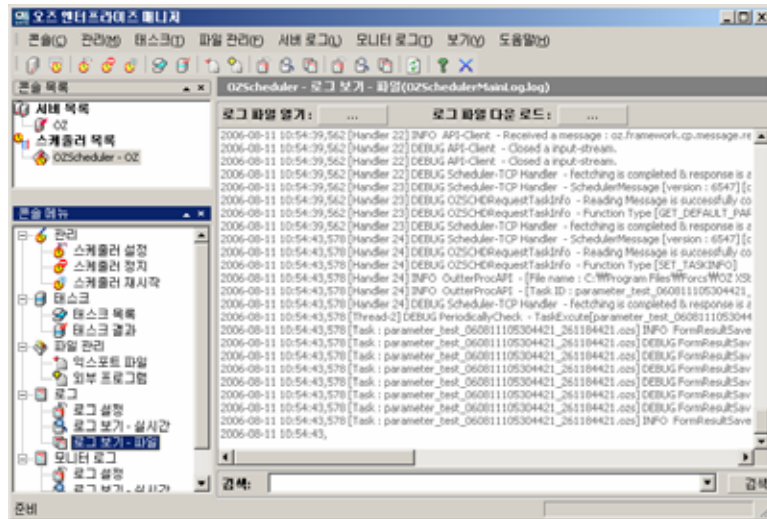


[...]

가

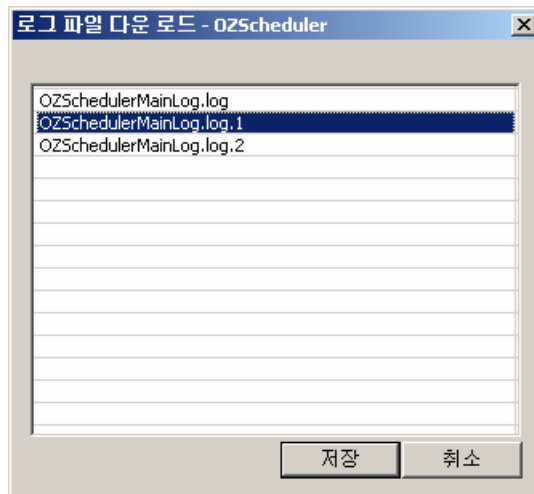


[ ]



[...]

가

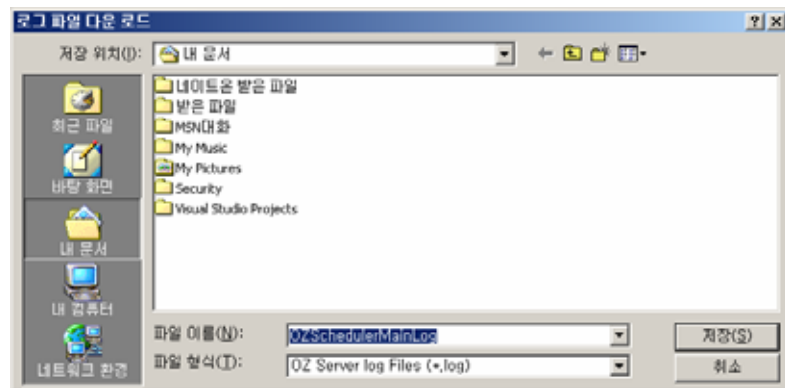


<Shift>

<Ctrl>

[ ]

가



[     ]

- 1)
 

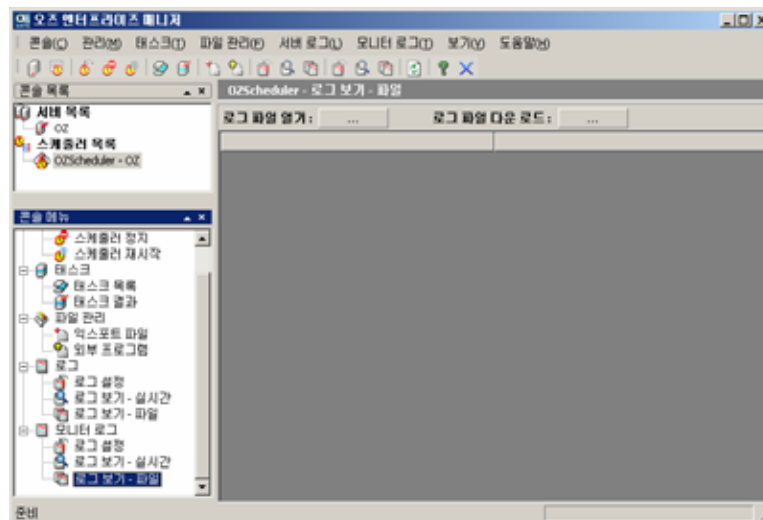
|                            |                                        |
|----------------------------|----------------------------------------|
| "OZSchedulerMainLog.log",  | "OZSchedulerMainLog.log.1",            |
| "OZSchedulerMainLog.log.2" | test [                                 |
| ]                          | "test.log", "test.log.1", "test.log.2" |
  
- 2)
 

|                                                        |                              |
|--------------------------------------------------------|------------------------------|
| "OZSchedulerMainLog.log",                              | "OZSchedulerMainLog.log.1",  |
| "OZSchedulerMainLog.log.2"                             | [     ]                      |
|                                                        | " OZSchedulerMainLog.log", " |
| OZSchedulerMainLog.log.1", " OZSchedulerMainLog.log.2" |                              |

■

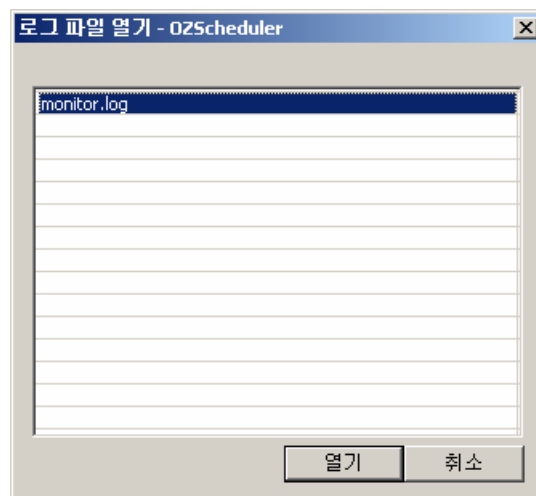
[     ]



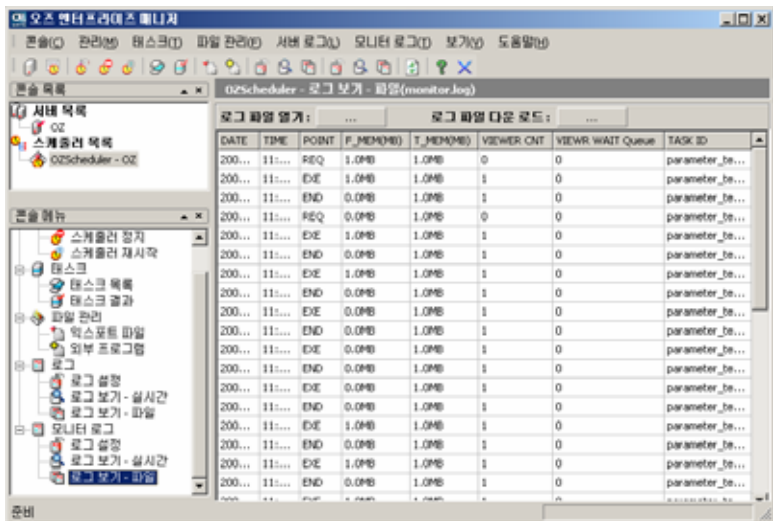


[...]

가

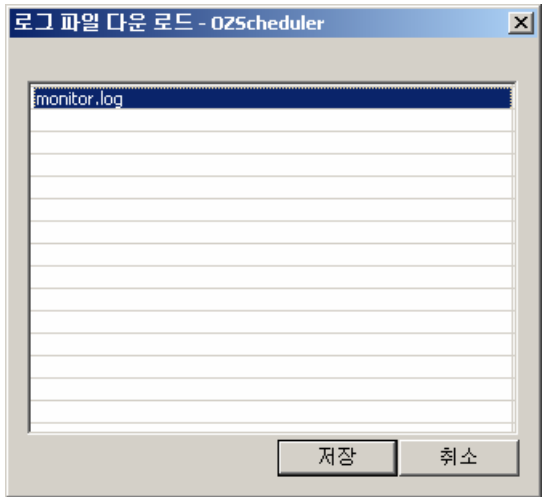


[ ]



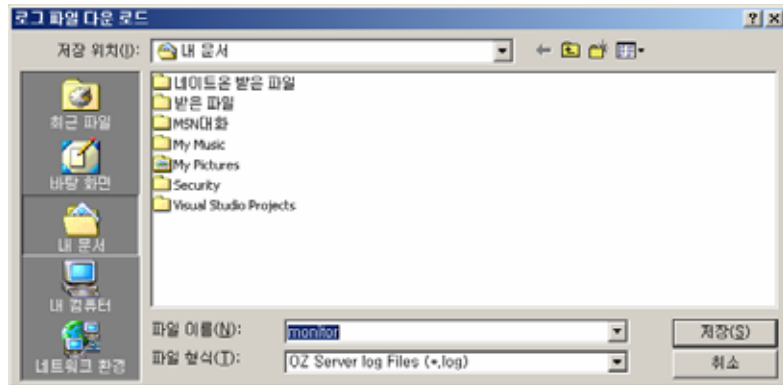
[...]

가



<Shift>      <Ctrl>

[   ]  
가



[     ]

- 1)
  - "monitor.log", "monitor.log.1", "monitor.log.2" test
  - [     ] "test.log", "test.log.1",
  - "test.log.2"
- 2)
  - "monitor.log", "monitor.log.1", "monitor.log.2"
  - [     ] "monitor.log",
  - "monitor.log.1", "monitor.log.2"